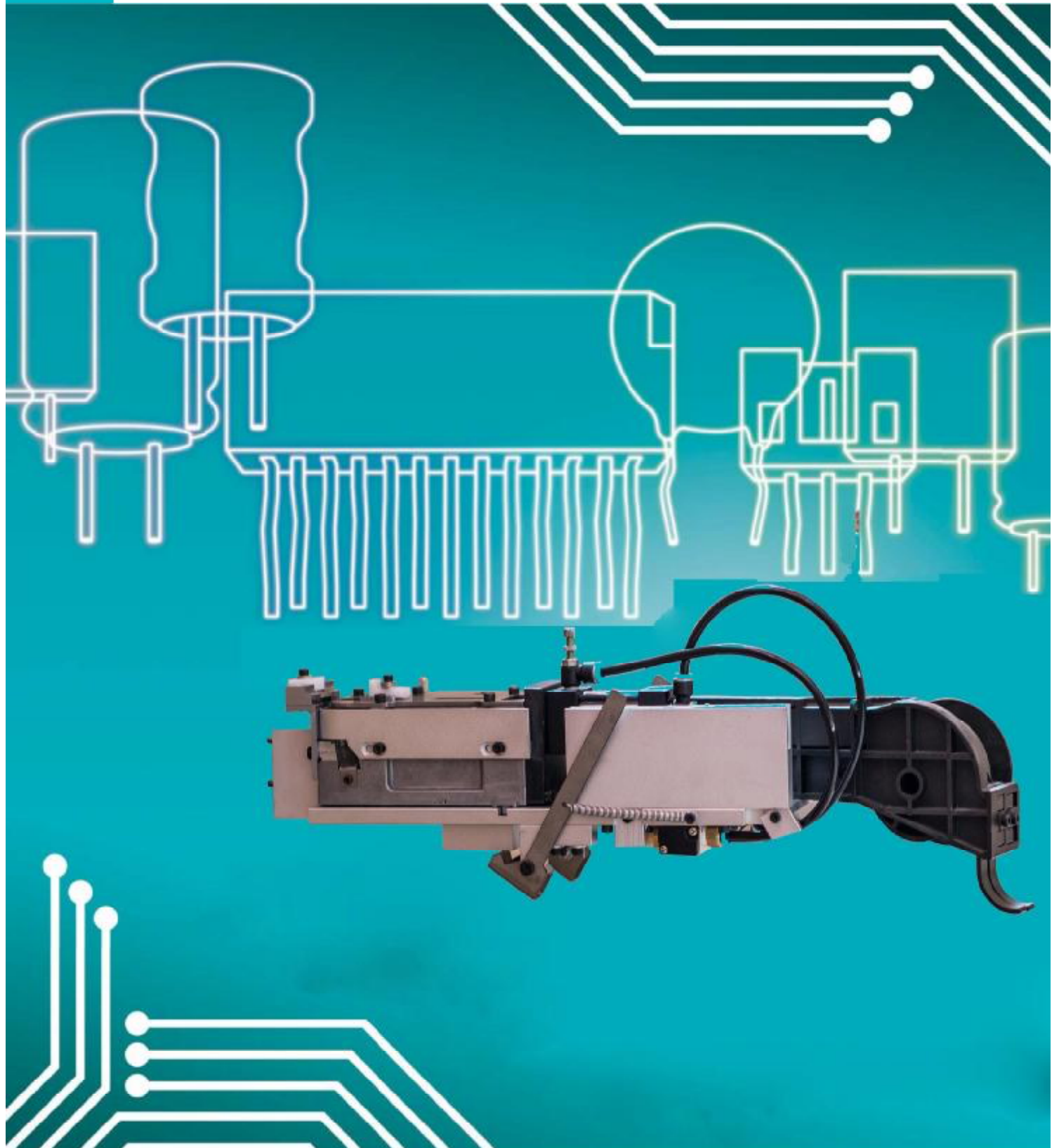


S-RF1001



Through-hole component feeder

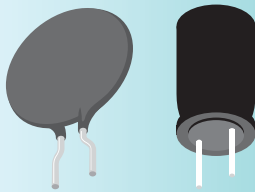
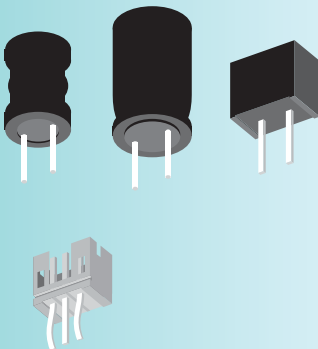


leads to **LOWEST COST**
OF OWNERSHIP

Introducing the S-RF1001, the through-hole feeder for mounter

The s-rf1001 is a revolutionary new concept from southern machinery. that allows the placement or insertion of both surface mount and through-hole components.Can adapdive most of mounter



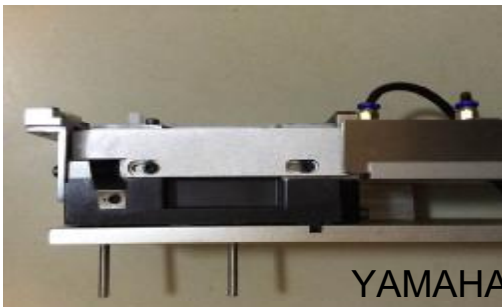
Auto Insertion	Manual Insertion
 <p data-bbox="223 1993 438 2060">Radial lead components etc.</p>	 <p data-bbox="622 1971 901 2027">Connector ,Capacitor, Inductor etc.</p>

Feeder specification & sales sample

1:L=550mm,W=110mm,H=130mm

2:Air-driven

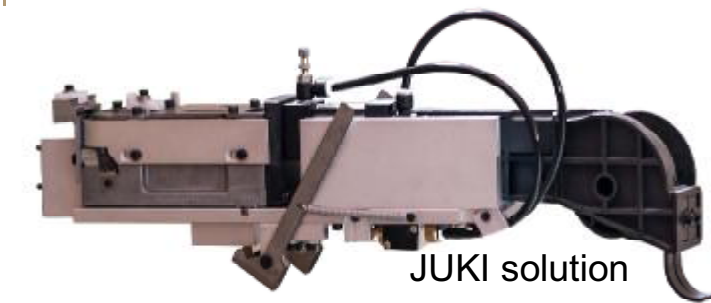
3:DC 24V in-put signal



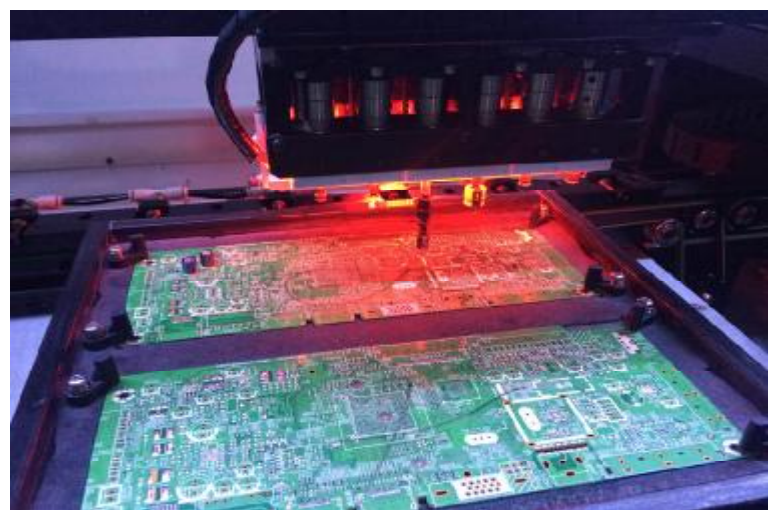
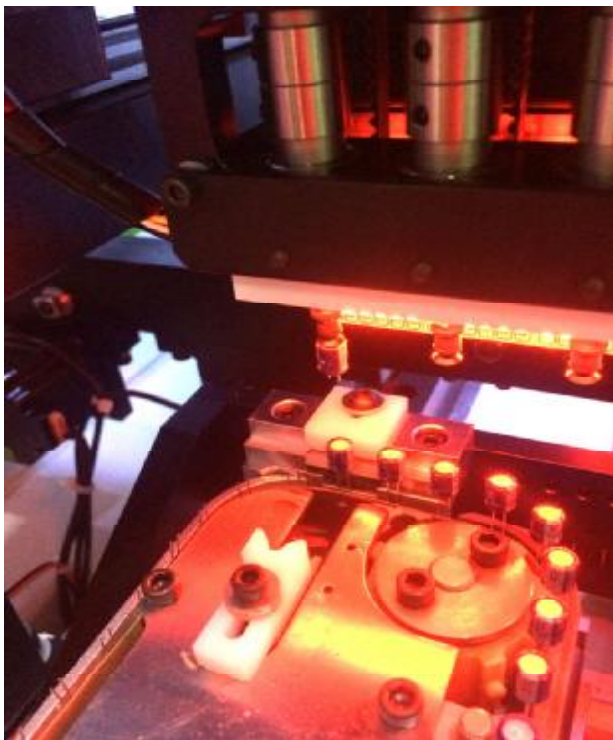
YAMAHA solution



UNIVERSAL solution



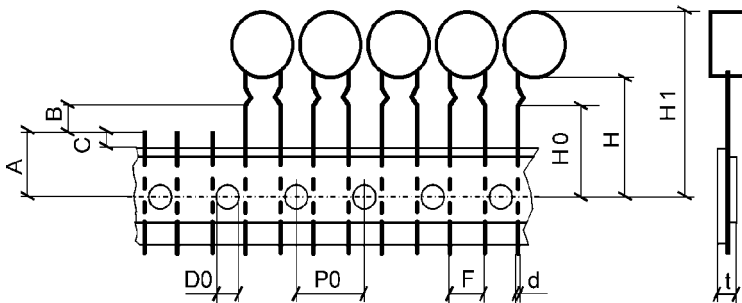
JUKI solution



Tape and component dimensions

The dimensions for tape packaging and components which are important for the radial feeder are shown in the graphic. Please consider, that the dimensions shown in the drawing are mainly minimum or maximum sizes.

Numerous special designs are possible and available for components with varying dimensions with regard to size, leads and tape packaging.



Dimensions feeder and tape			
Abb.	Description	Dimension	Tol
A	Distance transport hole cutting edge (in RF 200 adjustable)	11 - 17	± 0,2
B	Distance cutting edge crimp	2 min.	
C	Distance carrier tape cutting edge	4 min.	
D0	Ø transport hole	4	1)
d	Ø connecting wire	0,8 max.	
F	Distance connecting wire	25 max.	1)
P0	Distance transport hole	12,7; 15	1)
H	Distance transport hole component lower edge	18 min.	1)
H0	Distance transport hole crimp	15 min.	1)
H1	Distance transport hole component upper edge	40 max.	1)
t	Total thickness	2 max.	



Welcome inquiry

- 1, Please visit : www.smthelp.com
- 2, Find us more: <https://www.facebook.com/autoinsertion>
- 3, Know more our team: <https://cn.linkedin.com/in/smtsupplier>
- 4, Welcome to our factory in Shenzhen China
- 5, Google: Auto+Insertion
- 6, Looking forward to your email: jasonwu@smthelp.com

www.smthelp.com