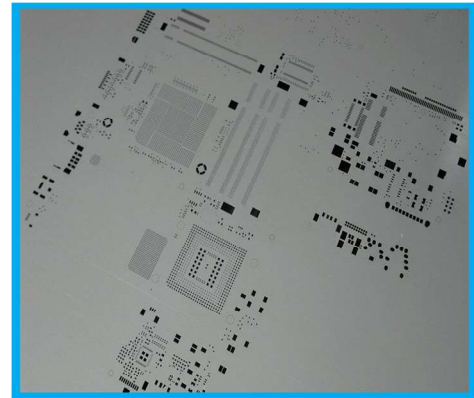
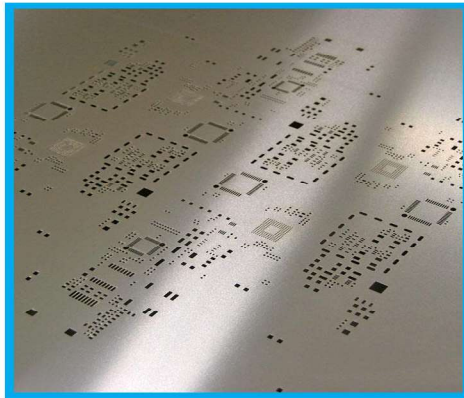
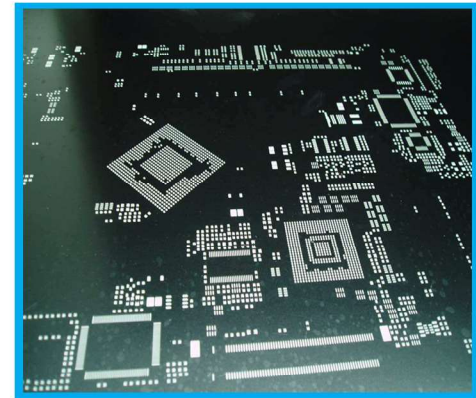
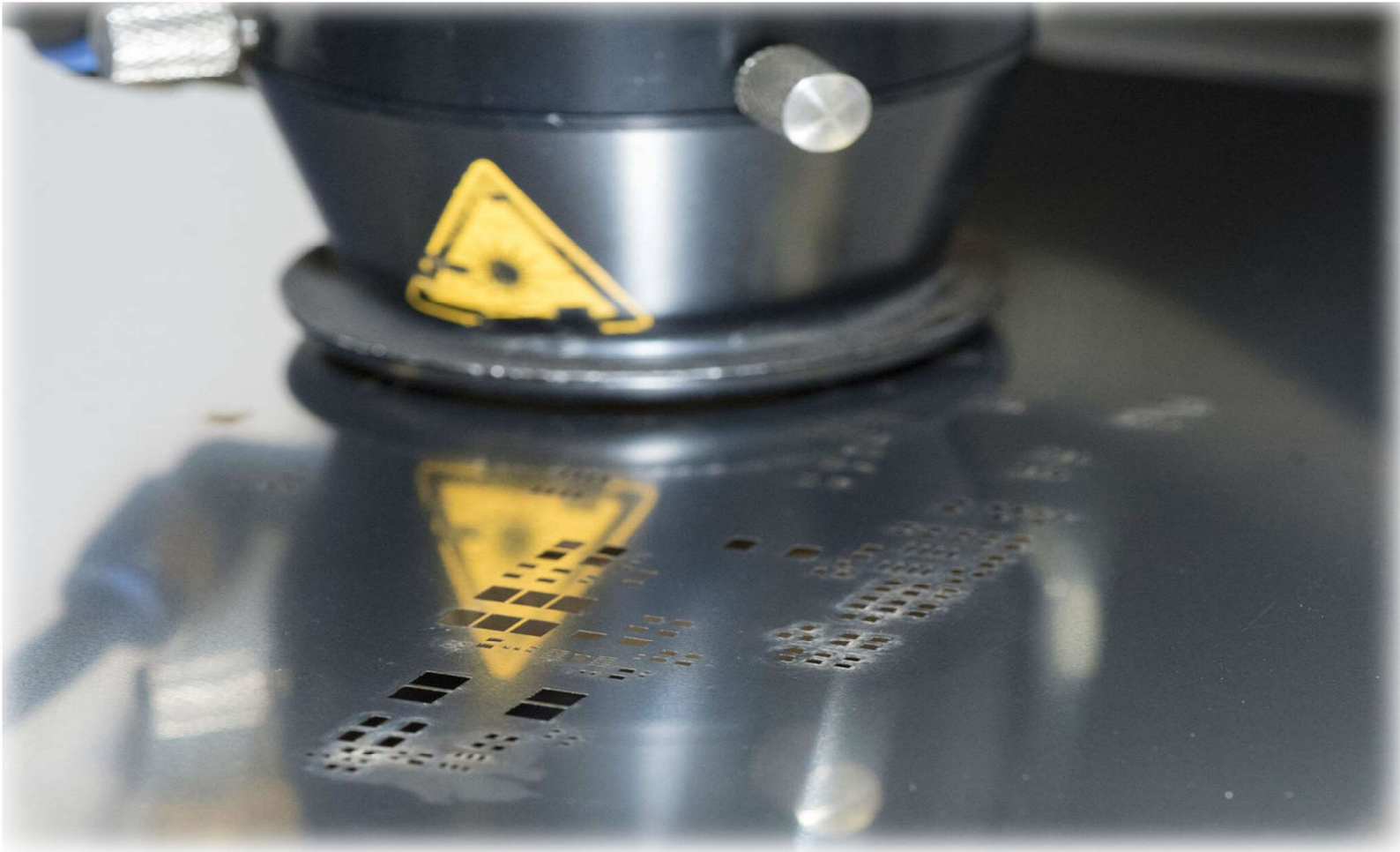


SMT stencil laser making machine

SL6060



Professional laser application

SHENZHEN SOUTHERN MACHINERY SALES AND SERVICE CO.,LTD

SL6060 is southern machinery's new generation of SMT stencil laser making machine.

There is a significant improvement in both performance and user-friendly operation design which compared with the previous models.

According to market demand The overall performance of the machine has been upgraded to a new level. While improving the cutting speed, also guarantees its excellent cutting quality.

Performance is comparable to imported equipment, and the cost performance is much higher than imported machines.



LinearMotor



ScaleandReadhead



Driver

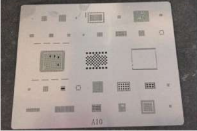


MotionController

- It use iron core linear motor and double driver structure, large thrust, maximum acceleration can reach 2.0G, ensuring precise movement of machine under high speed.
- Imported IPG fiber laser, stable output power, long life, maintenance-free, smooth hole processing, and ensure the stability of the processing process.
- Using imported drives from the US, high-end adjustment and tuning algorithms greatly improve cutting performance and ensure machining accuracy.
- The whole machine uses natural marble as the base structure, which is safe and stable.
- Equipped with a high-precision grating full-closed loop system for real-time feedback to reduce repetitive positioning errors.

Laser power	50W/100W/200W
Wavelength	1070nm
Beam quality	M ² <1.1
Working area	600mm*600mm
Clamping size	650mm*720mm
Cutting thickness	0.3mm
Cuttingspeed (pad/h)	19200
Overall dimension	1640mm*1380mm*1500mm
Weight	2200Kg
Positioning accuracy	±2μ
Repeated positioning accuracy	±2μ
Supply voltage	220V
Power consumption	2KW
Upper computer	Adavantech
Operating software	SmartCut
Cut document	LMD、CNC、DXF
Auxiliary cutting gas	Oxygen8-10Kg, Compressedair 16Kg
Main material	savageness granite

Example



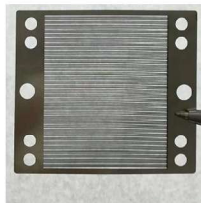
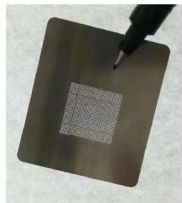
Precision cutting



Cutting graphics up to 100 times



Filament width is 0.1mm



Single line width is about 0.05mm