

# SME5600 PCBA Cleaning Machine

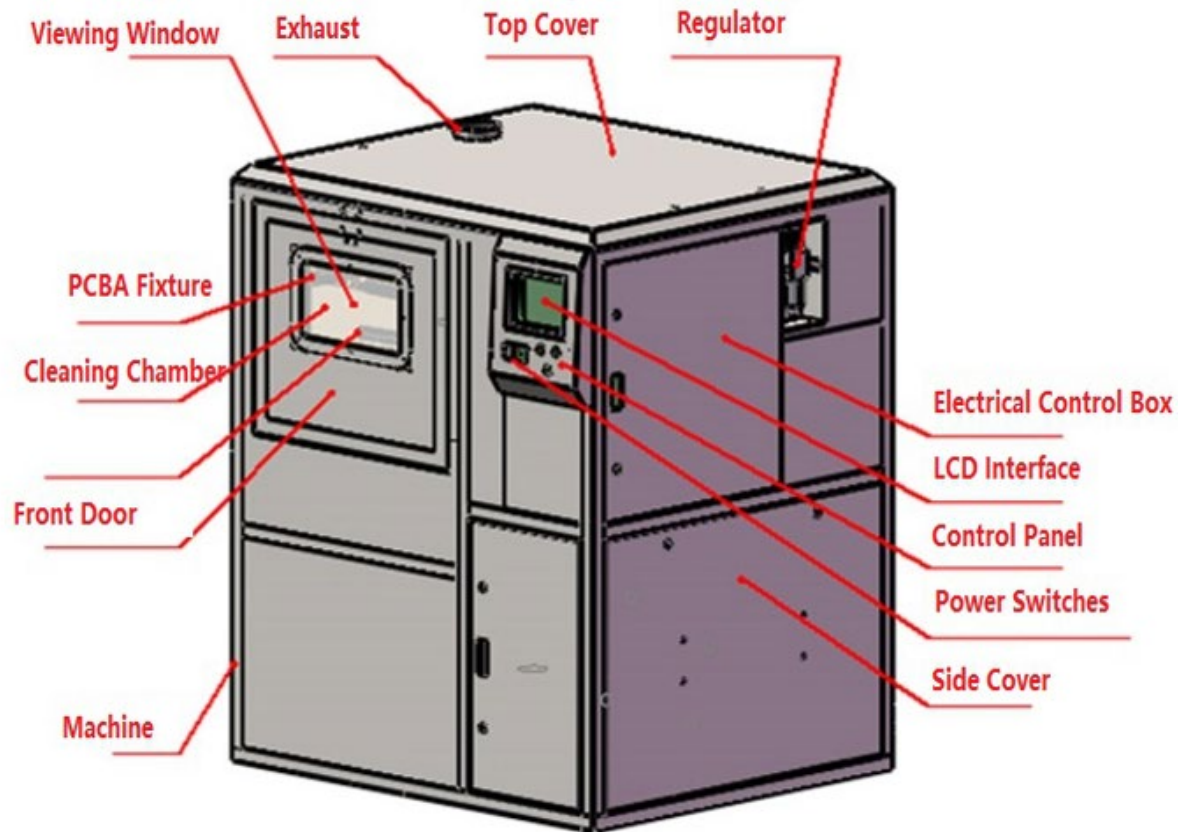


SME5600 PCBA cleaning machine is an energy-saving environmental protection, batch cleaning, integrated high-end cleaning machine. It can automatically complete cleaning, rinsing, drying process by just push the start key.

Mainly used for aviation, aerospace, medical, new energy, automotive electronics and other products . This machine can effectively clean residual rosin flux, water-soluble flux , No-clean flux / solder paste ball and other organic and inorganic pollution materials on SMT / THT PCBA.

## Application area



**Introduction :**

PCBA Cleaner targets Small Medium quantity PCBA offline cleaning.

Machine Size 1400mm \* 1350mm \* 1830mm. Electrical Powered, equipped with High pressure Pump, Blower and Heater.

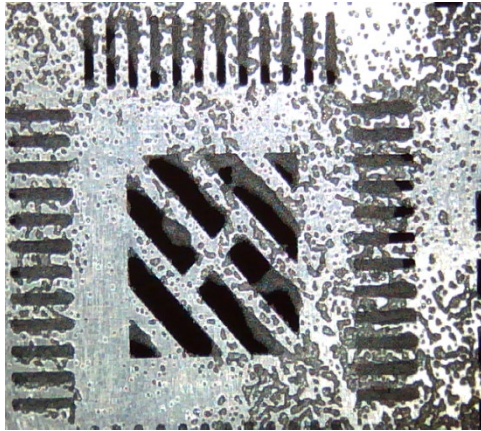
Provides Cleaning, Rinsing and Drying functions. 2 Chemical tanks with Heater functions and Filter system for recycling Chemicals.

Built with SUS 304 Stainless steel Functions, strong and rigid structure, PLC touch screen interface control with easy buttons operation.

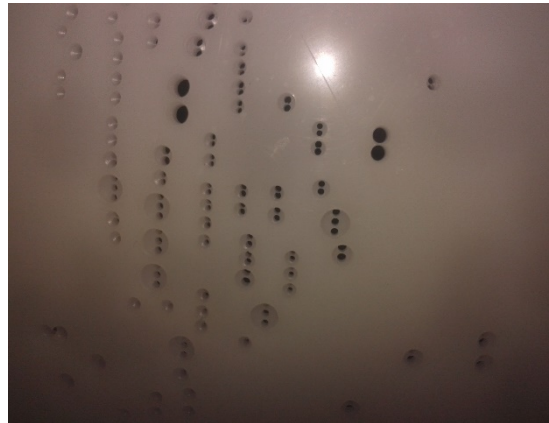
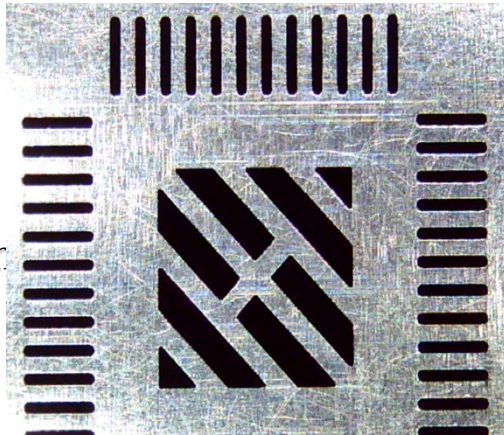
No complex parameters and functions. All settings can be adjusted to products characteristic and requirement.

One key operation; wash+rinse process are completed automatically.  
Large filter cartridge, sealed rotatory mechanism, powerful cleaning result;  
Double side stencil clean, stencil tension not affected.

Before  
cleanin  
g



After  
cleanin  
g





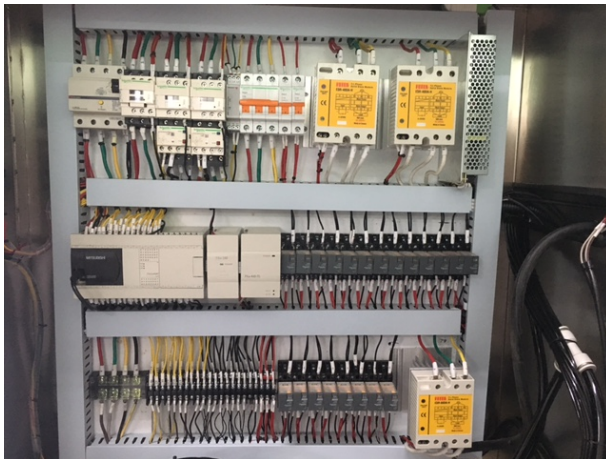
Big cleaning room



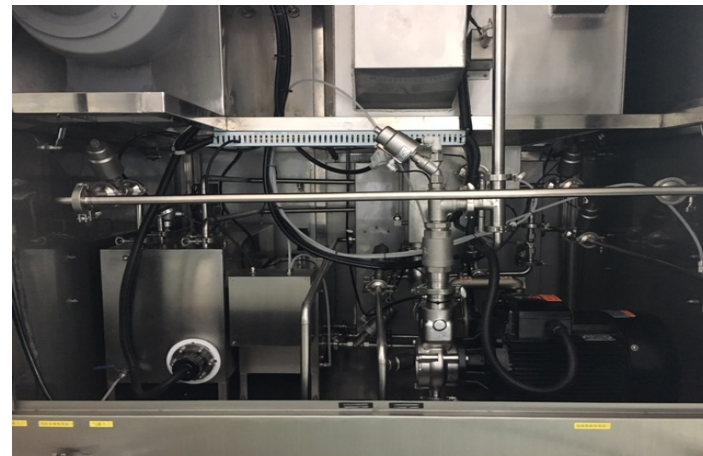
Dual layers leaning basket



Visible window

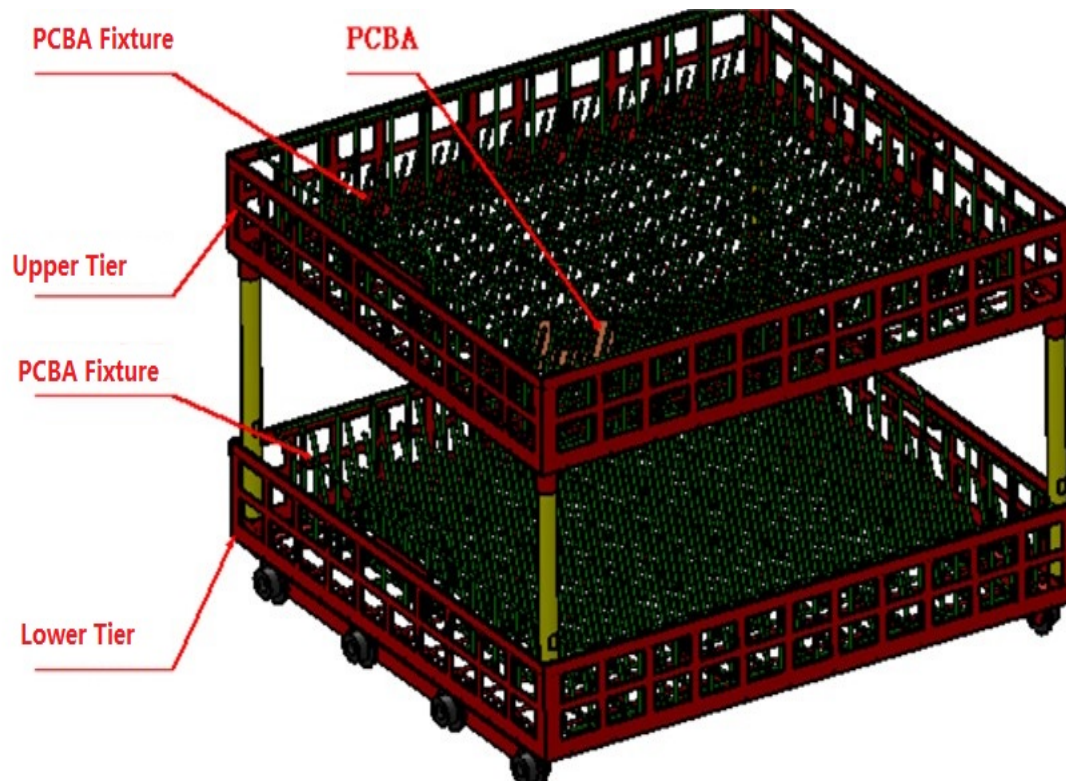


Control box



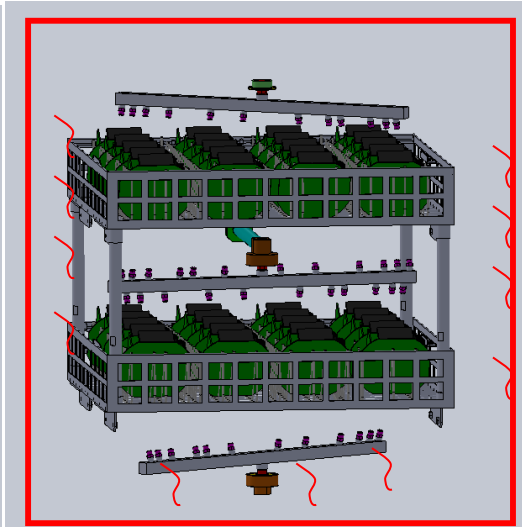
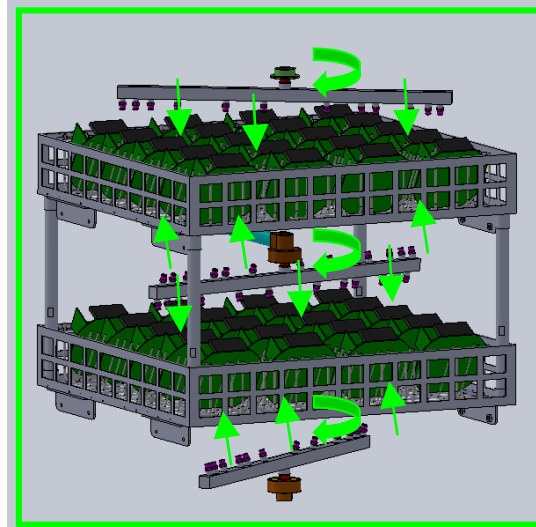
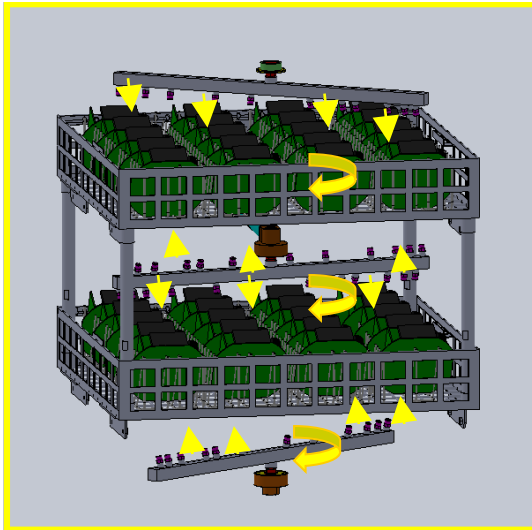
Inside pipes

## Basket details



SUS 304 Stainless Steel structure including Fixtures  
PCBA Fixture Overall Dimension 610mm\*560mm\*480mm.  
Biggest PCBA dimension 560mm\*550mm\*130mm  
Smallest PCBA 80mm\*50mm, up to 200pcs

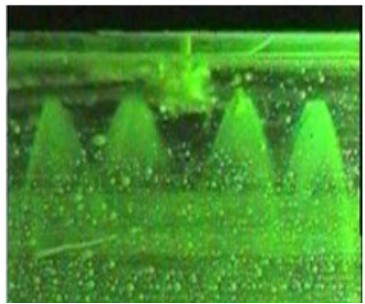
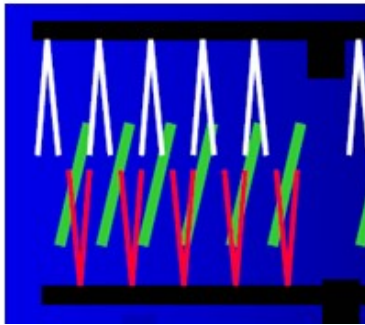
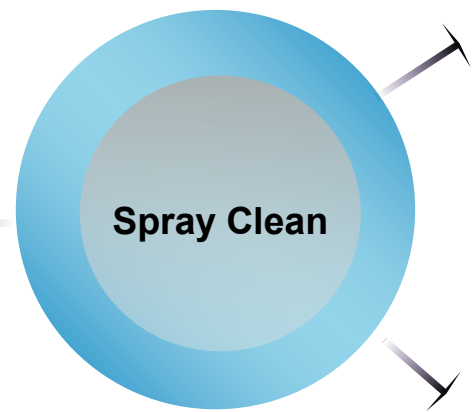
## (1) Cleaning Process



Chemical detergent clean ---- DI water Rinse ---- Hot air Drying

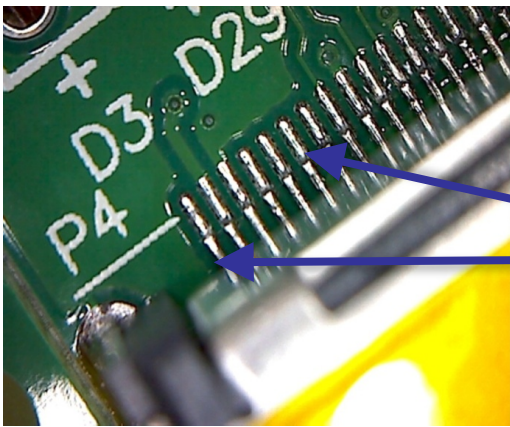
Upper/middle/lower 3 360° rotation spray rods, 2 layers cleaning basket

**(2) Cleaning Method**



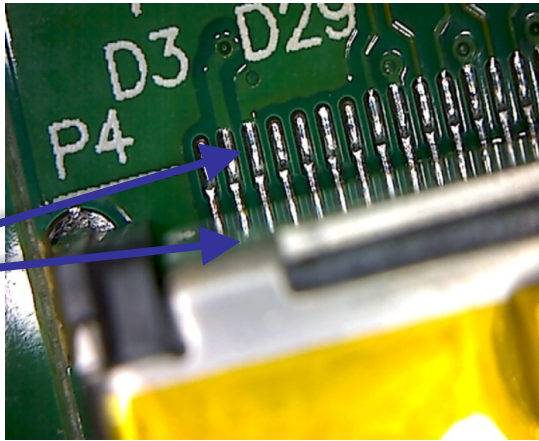
**(3) Cleaning Results**

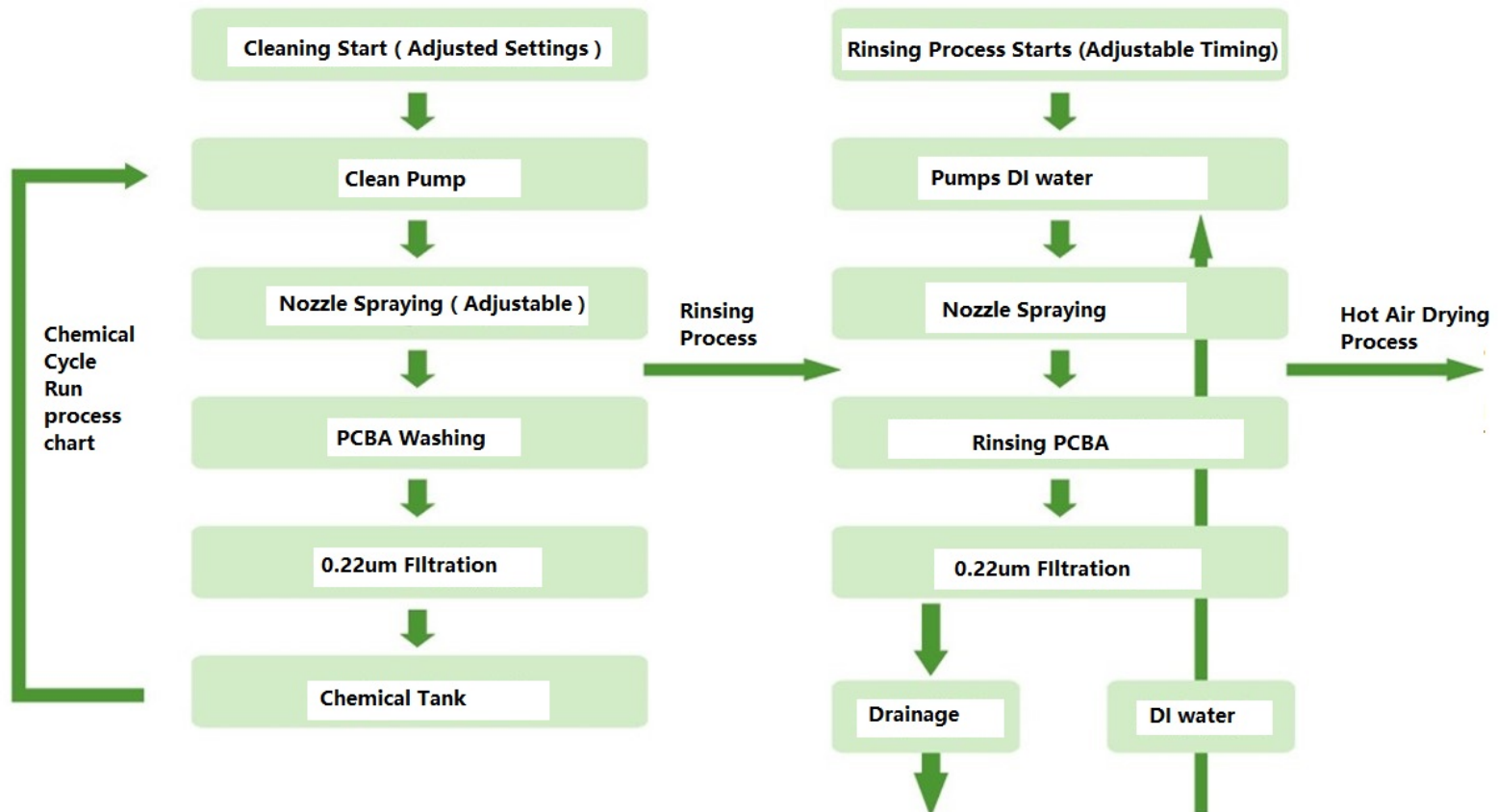
**Before**



**Flux Residue**

**After**





In general, the cleaning process parameters are: cleaning time (10-20) min, rinse time (1-2) min, rinse times (3-5) times, drying time (20-30) min, cleaning temperature (40 -60) °C, rinse temperature (room temperature), drying temperature (70-95) °C, so the general completion of a cleaning process time (40-60) min, under special circumstances according to the actual situation

**SME5600 Specification**

<b>Item</b>	<b>Spec</b>
Cleaning basket size:	610mm(L)*560mm(W)*100mm(H)x 2 layers
Concentration liquid tank capacity	30L
Dilution tank capacity	60L
Spray tank capacity	18L
Temporary tank heater	6KW
Cleaning time	0~99min(adjustable)
liquid temp	Room temp -75 degrees / (adjustable)
Rinse time	1-99 times / 1~2min each time
Rinse water temp	Room temp -75 degrees / (adjustable)
Drying time	0 to 99 minutes / (adjustable)
Resistivity meter monitoring range	0~18MΩ
liquid tank heater	9KW

**SME5600 Specification**

<b>Item</b>	<b>Spec</b>
Drying Temperature:	Room Temp--99°C / (Adjustable)
Drying Heater/KW:	6KW
Spray Pressure:	30PSI - 80PSI/(Adjustable)
Chemical liquid level filter:	0.22μm (filter microparticles: solder paste, rosin, flux and contaminants)
DI water Filter:	0.22μm (filter microparticles: solder paste, rosin, flux and contaminants)
water inlet:	1 inch fast junction interface
Water outlet:	1 inch fast junction interface
Chemical Inlet:	1 inch fast junction interface
Real - time pressure gauge :	3PCS (nozzle / DI water / waste liquid)
pump:	5.5KW
Outlet size:	Φ100W)×30mm(H)
Power source:	AC380V 50HZ 65A/0.45MPa~0.7MPa
Weight:	600Kg
Machine Dimension:	1300mm(L)×1200mm(W)×1850mm(H)

## SMT Cleaning Machine



**S-1688 Pneumatic stencil  
cleaning machine**



**Electric stencil  
cleaning machine**



**Wave oven pallet  
cleaning machine**



**Mis-print PCB cleaning  
machine**



**Squeegee cleaning  
machine**



**Nozzle cleaning  
machine**

## Screen Cleaning Machine



**General screen  
cleaning machine**



**PCB green ink screen  
cleaning machine**



**Water ink screen  
cleaning machine**



**Screen auto  
developing machine**



**Screen auto  
stripping machine**



**Ink squeegee  
cleaning machine**

## PCBA Cleaning Machine



**PCBA offline  
cleaning Machine**



**PCBA DI water in line  
cleaning machine**



**PCBA in line cleaning  
machine**



**PCBA in line cleaning machine**



**DI water machine**

# Best After-sales service

- **Worldwide Support**
- **Free Installation/ Training**
- **1 day lead-time (spare parts)**
- **1 Month customize solution**



# Welcome inquiry

- 1, Please visit : [www.smthelp.com](http://www.smthelp.com)
- 2, Find us more: <https://www.facebook.com/autoinsertion>
- 3, Know more our team: <https://cn.linkedin.com/in/smtsupplier>
- 4, Welcome to our factory in Shenzhen China
- 5, Google: Auto+Insertion
- 6, See machine working video: youtube - Auto Insertion
- 7, Looking forward to your email: [info@smthelp.com](mailto:info@smthelp.com)