

SMD chip tap&reel , IC [package](#) counting ● Electronic components production , shipping storage and inventory management ● Production components quantity check

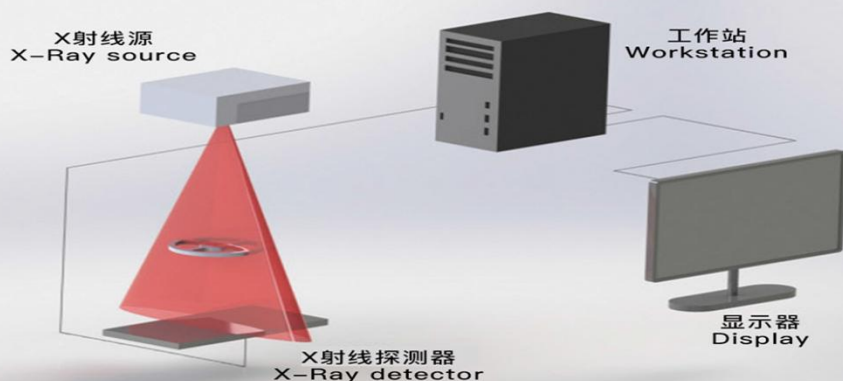


Features:

- Fast speed and high accurate Chip counting, reducing labor cost
- One-button operation, Automatic counting .
- Minimum component size 01005
- System Accuracy >99.8%
- Count time<10s 7”S/Tape & Reel
- Count time<18s 17”S/Tape & Reel
- Auto-scan barcode with scanner or camera
- New label printing with P/N and quantity
- Integration to ERP & Warehouse system
- Capable for interface with intelligent storage system

AX6000(Stand alone)

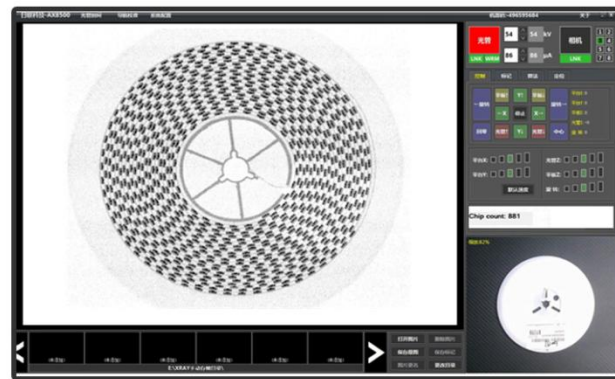
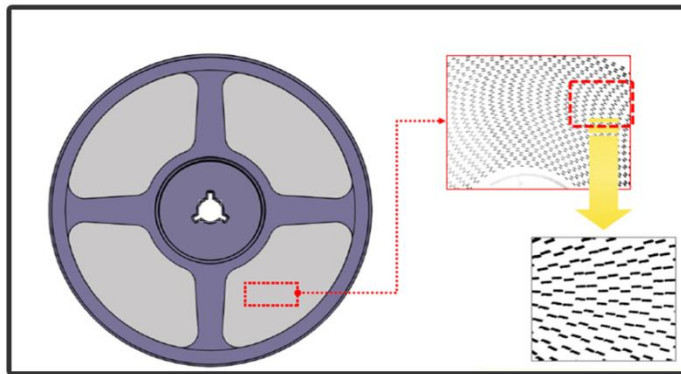
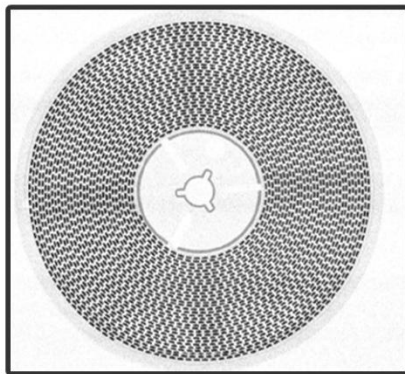
应用领域 Applications ▶



- SMD chip tap & reel, IC Package counting
- Electronic components production, shipping storage and inventory management
- Production components quantity check

- 应用于所有阻容类物料和IC类物料
- 电子元器件的生产, 出货, 入库等管理计数
- 生产用的卷盘类物料的快速计数

检测图片 Inspection Images ▶



Specifications



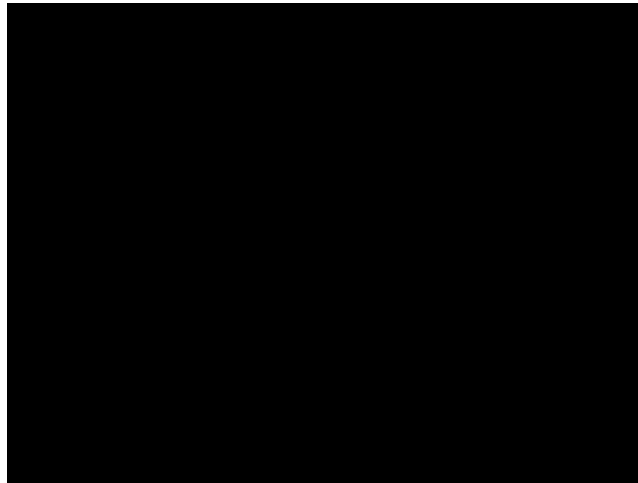
AX6000(Stand alone)

Model	AX6000
Max.Voltage	100kV
Max.Current	3mA
Spot Size	0.4mm
Working Method	Stand alone
Imaging system	Line scan camera
Scanning accuracy	>99.8%
Scanning size	440 X 60 mm
Minimum material size	1005
Display	22"LCD Display
Dimensions	17000 X 900 X 970 mm
Weight	1000 kg
Safety	<1μSv/hr(<0.1mR/hr)5cm away from the housing
Control	Keyboard/Mouse, Integration with the scanner ,Intelligent camera ,Barcode printer , counting result automatic transfer to MES & ERP system
Automatic detection	Standard
Applications	Electronic components production, shipping, storage and other management counting
<p>1. Focus size is a variable, please contact Southern Machinery for more information</p> <p>2.Radiation Safety Statement: All Southern Machinery X-ray equipment manufactured meets the requirements of FDA-CDRH in CFR 21 1020, 40-J for long cabinet X-ray systems. The FDA-CDRH stipulates that the amount of X-ray radiation overflowing from any surface of the X-ray cabinet system must not exceed 0.5 milliliter/hr.2". The X-ray system of Southern Machinery is less than 15 times the specified value.</p>	

SMD X-Ray Chip Counter AX6000 for EMS

Youtube Video introduction

<https://youtu.be/nEXFhxffbbs>



Welcome inquiry

- 1, Please visit : www.smthelp.com
- 2, Find us more: <https://www.facebook.com/autoinsertion>
- 3, Know more our team: <https://www.linkedin.com/in/ming-gan118/>
- 4, Welcome to our factory in Shenzhen China
- 5, Google: Auto+Insertion
- 6, Looking forward to your email: info@smthelp.com