

1. Dual table alternating cycle for high productivity
2. High-speed spindle: neat edges, stable & fast operation
3. Aluminum die-cast frame: rigid, precise, thermal-stable
4. Microcontroller + handheld programmer: intuitive, efficient
5. Premium components: high config, durable, long lifespan
6. Free prototype testing: validate before purchase
7. 1-year free warranty: reliable, worry-free operation



#### Parameter

Equipment Dimensions:

Cutting Range X/Y/Z (mm)

Programming Method

Movable Graphic Trajectory

Tool Head

Spindle

Frequency

Maximum Load

Movement Speed (mm/sec)

Repeatability, Cutting Accuracy

Control Method

Program Record Capacity

Display Mode

Motor System

Driver

Linear Guide

Photoelectric Sensor

Transmission Method

Fixture Material

Environmentally Protective Cover

Power Input

External Control Interface

#### Specification

1350\*800\*1900mm (LWH)

600/400/400/100

Teach Programming or Graphic Import

Points, straight lines, arcs, full circles, curves,

polylines, helices, ellipses

Precision milling cutter

800W

5 times/second

10 kg

0--500mm

± 0.02 mm

Microcontroller + Handheld Controller

1000 Sets

LCD Teaching Box

Shinano Electric, Japan

YAKO

HIWIN Taiwan

Huayifeng

Synchronous Belt / TBI Lead Screw (Taiwan)

Bakelite (specific purpose)

Sheet metal environmentally protective cover

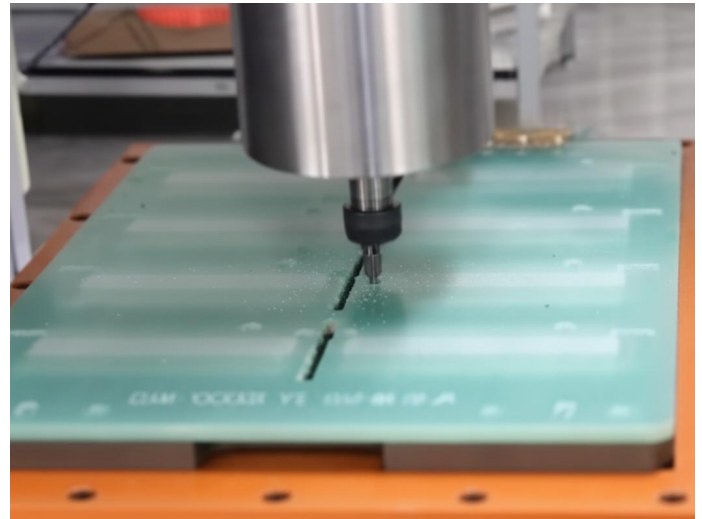
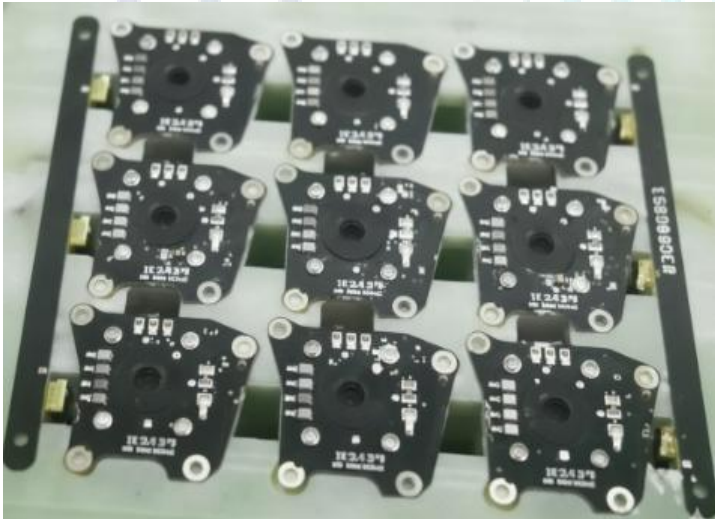
Full voltage AC110\_220V

RS232



- 1 - Vacuum Cleaner Material Bin
- 2- Vacuum Cleaner Main Unit
- 3 - Equipment Switch Button
- 4 - Depaneling Spindle Speed Governor
- 5 - Depaneling Blade Installation Position
- 6- Product Fixture Station 1
- 7 - Dust Collection Tray 1
- 8 - Operation Button Panel
  
- 9- Equipment Up/Down Movement Module
- 10- Anti-static Depaneling Spindle
- 11- Equipment Left/Right Movement Module
- 12- Equipment Waste and Dust Exhaust Pipeline
- 13 - Equipment Support Column
- 14- Equipment Programming Controller
- 15 - Product Fixture Station 2
- 16 - Dust Collection Tray 2

- 1 Free samples run, full evaluation report
- 2 Rich teach elements: points, lines, arcs, 3D curves + preview
- 3 Conditional rotation & dual MARK alignment
- 4 Multi-discontinuous command selection
- 5 Command movement for position relocation
- 6 Breakpoint execution: start from specified points
- 7 Array replication, offset, batch editing, I/O functions
- 8 Auto-execution, reset, production counter, timer
- 9 4 wire drawing process options
- 10 DXF/PLT import with auto path optimization
- 11 Serial port download & cross-device file copy
- 12 Stores 100+ files, 8,000 instructions per file



Item	Manual	Automated
Efficiency	~60 seconds/panel, ~60 Boards/hour	~30 seconds/panel, ~120 Boards/hour
Product Cutting	Relies on intuition; inconsistent speed, uncertain factors leading to burrs/rough edges. High time cost for training skilled workers; dust makes job undesirable.	High cutting quality consistency, no burrs. No need for skilled workers (simple board placement). Continuous operation with stable capacity; easy operator job.
Defect Handling	Possible issues: uneven surfaces, over-cutting, missed cuts, inconsistent planes	Stable/repeatable operation with high uniformity; high efficiency, no burrs/flushes; cost savings

# Your Trusted Partner for SMT & THT Solutions

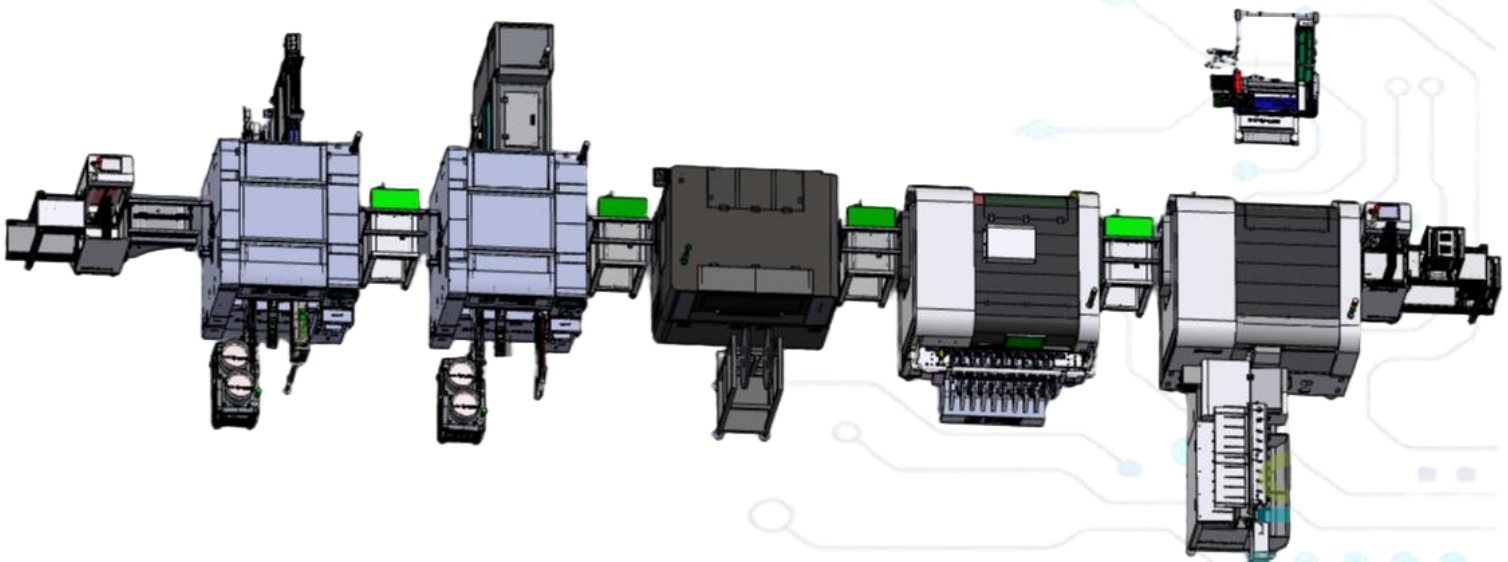
Founded in Shenzhen in 2011, Southern Machinery specializes in designing and manufacturing advanced SMT/THT machinery for PCB assembly automation. Our precision-engineered equipment delivers cost-effective, high-efficiency solutions for both high-speed mass production and delicate small-batch manufacturing, ensuring durability and user-friendly operation.

Leveraging Shenzhen's electronics manufacturing expertise, we provide not just top-tier machinery but also industry-leading knowledge and best practices to global clients.

Explore our solutions at [www.smthelp.com](http://www.smthelp.com), follow our innovations on:

- [\[LinkedIn Company Page\]](https://www.linkedin.com/company/smtmachine)(<https://www.linkedin.com/company/smtmachine>)
- [\[LinkedIn Profile\]](https://cn.linkedin.com/in/smtsupplier)(<https://cn.linkedin.com/in/smtsupplier>)
- [\[Twitter\]](https://twitter.com/smtspecialist)(<https://twitter.com/smtspecialist>)
- [\[Facebook\]](https://www.facebook.com/autoinsertion)(<https://www.facebook.com/autoinsertion>)
- [\[YouTube Channel\]](https://www.youtube.com/c/Smthelping)(<https://www.youtube.com/c/Smthelping>)
- [Browse our machine catalog](https://file.autoinsertion.com) at (<https://file.autoinsertion.com>)
- [Find machine photos](https://ph.smthelp.com) at (<https://ph.smthelp.com>)

Shaping the Future of Electronics Manufacturing.



**Specialized in Design And Manufacturing SMT THT Machine**

Add: Room 1806, Block 3, Jinyun COFCO, Qianjin 2nd Road, Baoan District, Shenzhen City, CN 518102  
TEL: 0755-83203237; FAX:0755-23240492 Website: [www.SMThelp.com](http://www.SMThelp.com)

[info@SMThelp.com](mailto:info@SMThelp.com)