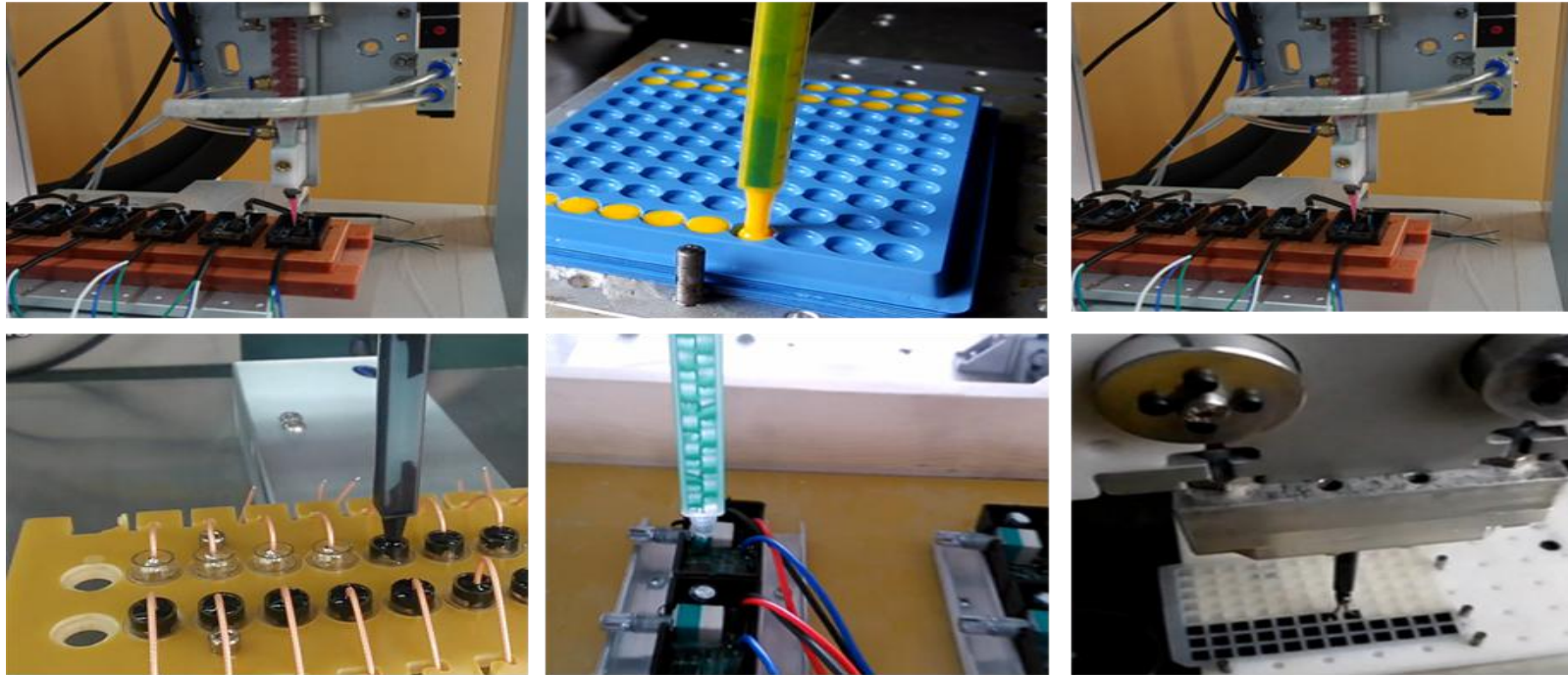




## Features

1. Automatic metering and mixing, touch screen PLC control system, English operation interface allow easy to set parameters;
2. Big LCD screen displays various processing data;
3. Easy programming of dots, stripes, arcs, compound arcs, and patterns on different planes;
4. Gluing speed and timing can be set;
5. CAD file can be imported and turned to be dispensing patterns, and downloaded via USB; (optional function)
6. Mixing ratio 1:1-1:10 and gluing volume can be set and adjusted as per actual need. Dynamic mixing ensure two-component glue to be mixed to a fully homogeneous consistency;
7. Metering, mixing, and gluing simultaneously;
8. Two tanks keep A glue and B glue separately;
9. Liquid level sensor, alarm function;
10. Tank stirring and vacuum defoaming function optional;
11. Auto cleaning; The cleaning mode can be manually or automatically, manual mode just remove the mixing tube then soak into cleaning agent, after 10 min take out and clean with compressed air, Automatic mode only need to operate the cleaning switch on touch screen within 1 minute to complete;
12. Glue tank/metering pump/glue pipe heating function (optional);
13. Vacuum control keeps thin fluids from dripping;
14. Unique control system which will not be influenced by air pressure factor ensures optimal dispensing performance;
15. XYZ axis can be programmed to dispense glue along with desired patterns.

## Application



epoxy resin AB glue



polyurethane resin AB

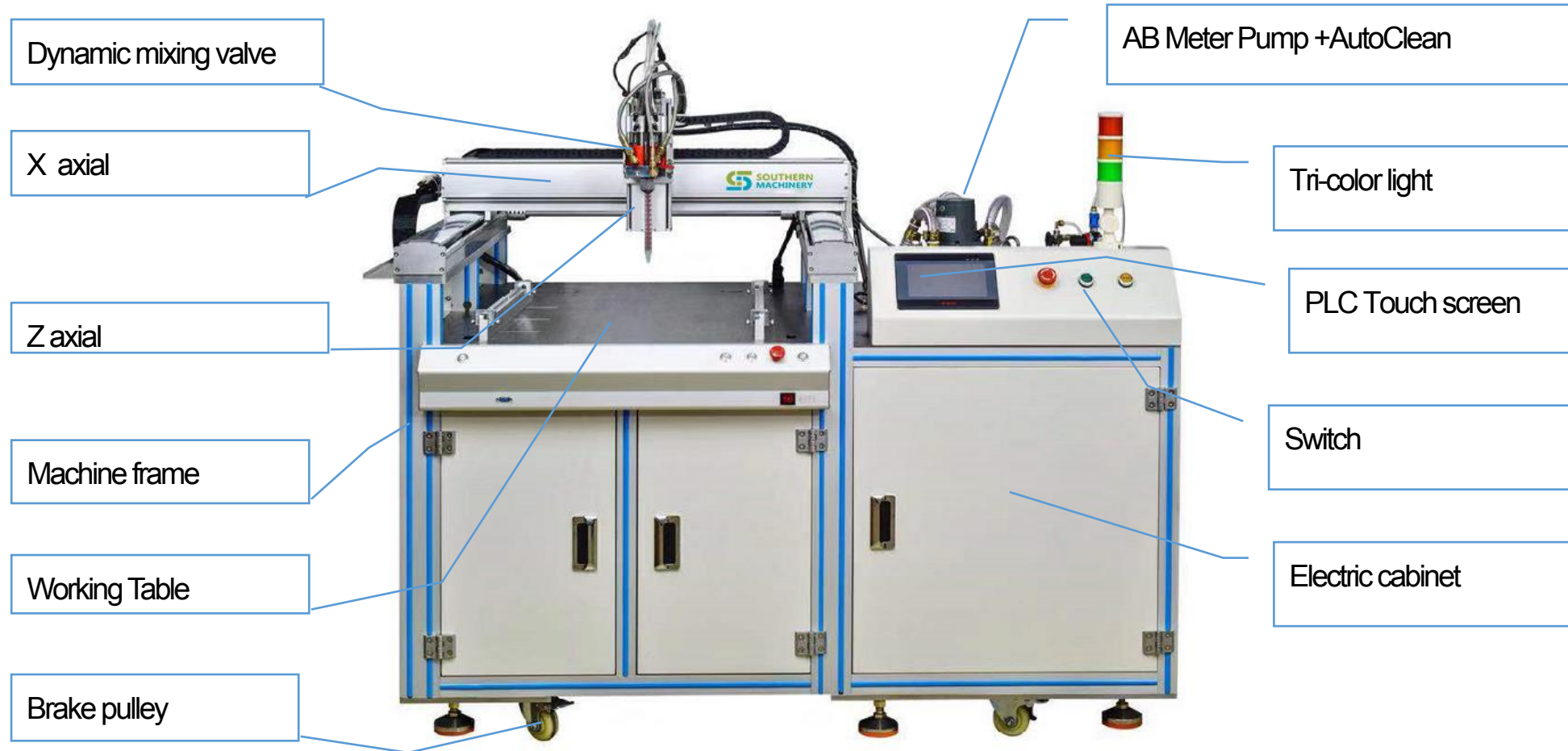


Organic silica gel AB

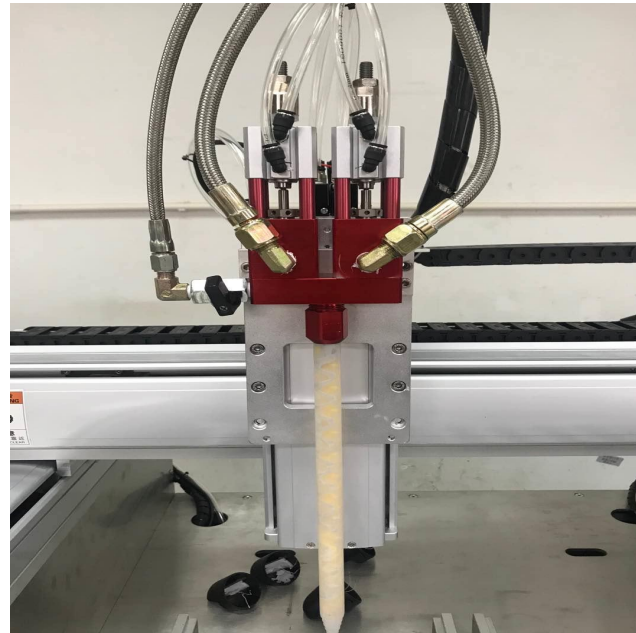
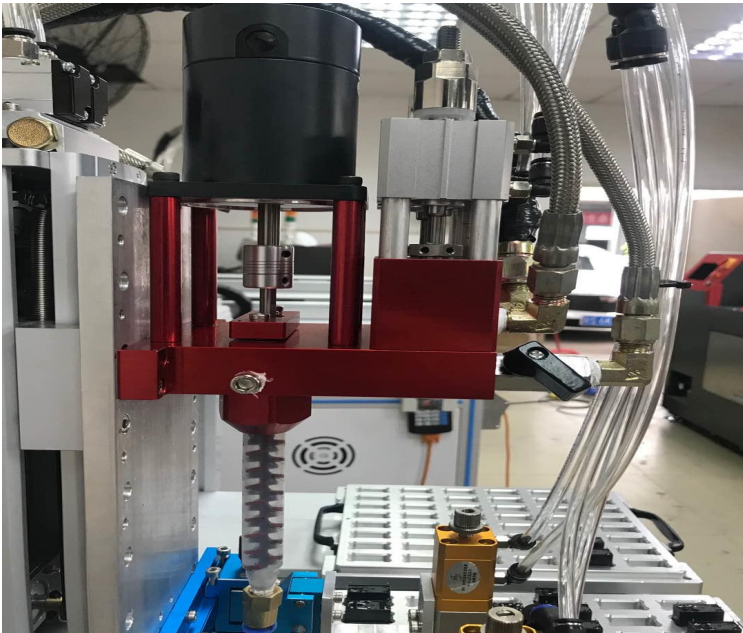


Styrofoam

## Overall structure



## Double liquid valve



Double liquid valve , High precision , durable and anti-abrasive: Multi-function, dynamic&static for option: easy to clean.

## A B barrel



with the functions of anti precipitation/stirring, heating, automatic vacuumizing and glue auto adding.

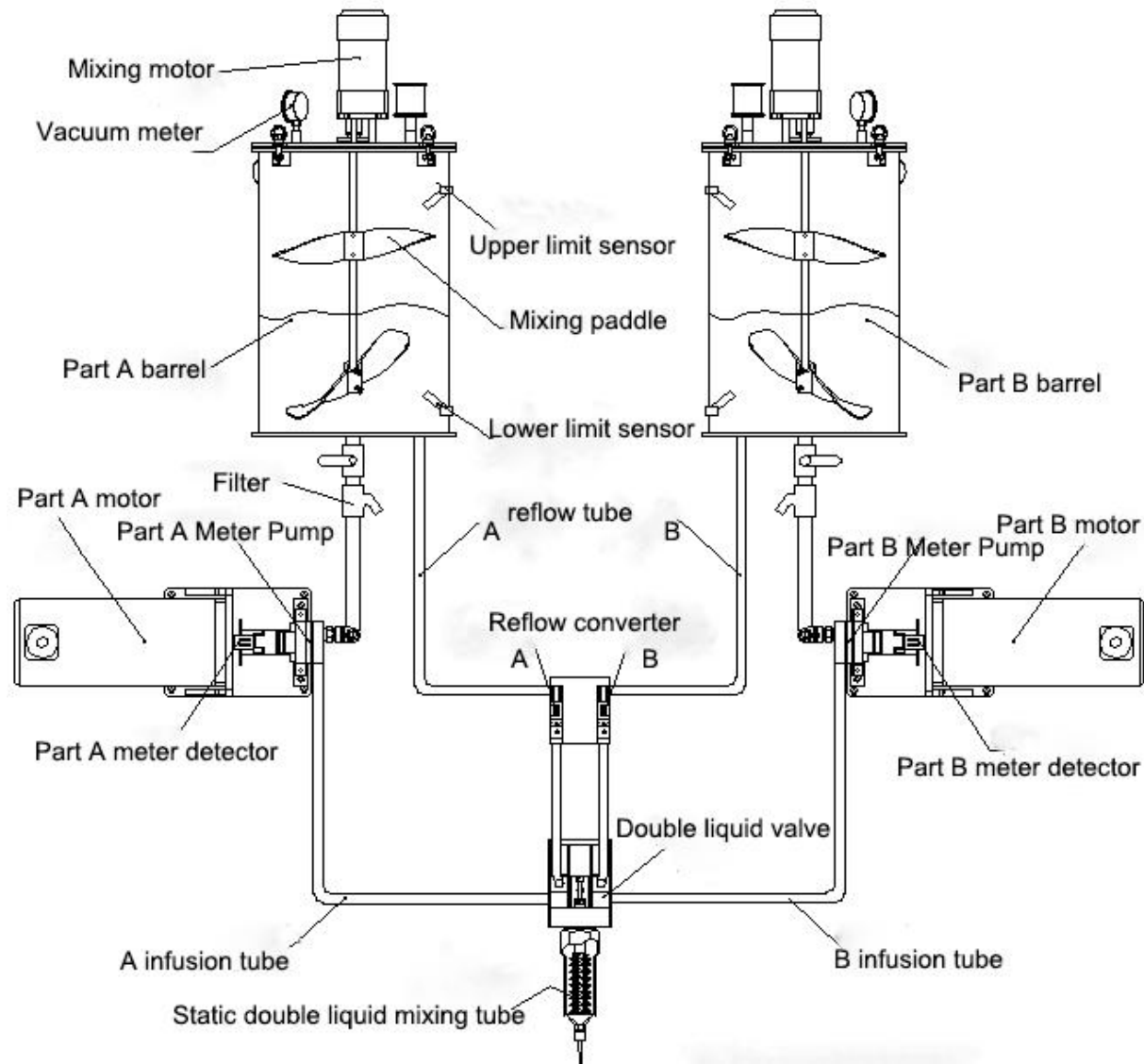
Optional to 30L or 8L  
It can withstand positive and negative pressure

## Vacuum pump



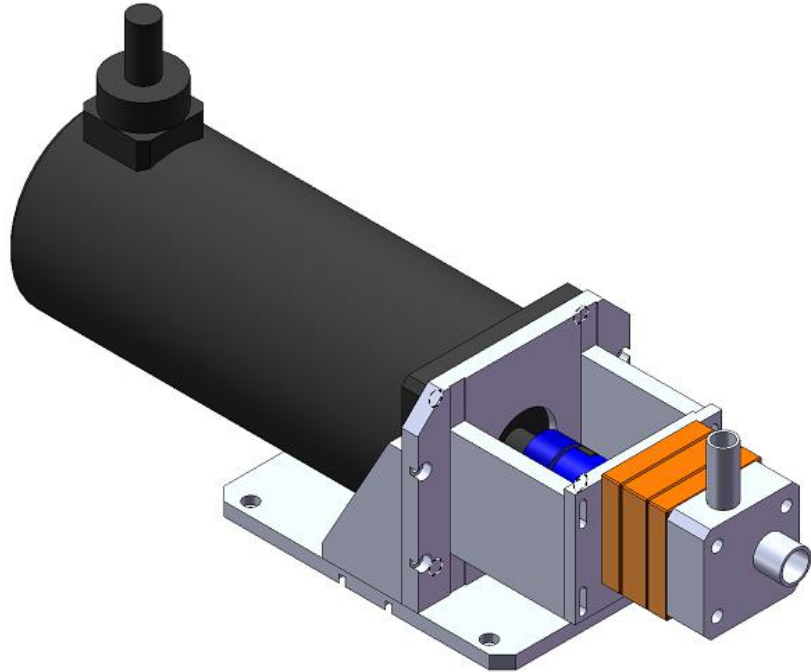
It has good stability, smokeless, oil-free and pollution-free. Small size, light weight, low noise, easy to start.

## Working Principle



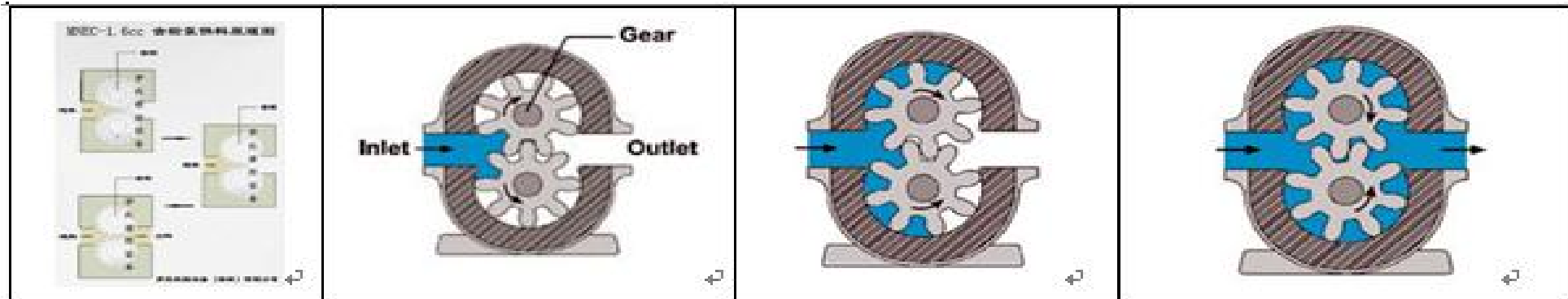
The control system controls the time, proportion and size of the manipulator's walking and dispensing. The glue mixing system completes the dispensing and conveying glue to the glue outlet head according to the command issued by the control system, and the three-axis motion platform completes the actions required by the program according to the command issued by the control system.

## Principle of metering proportioning--gear pump



a. Gear pump is a new type of pump which works according to the principle of rotary meshing volume type. Through the matching stator and rotor screw, the fluid is continuously extruded when the rotor rotates. The material in the metering chamber is more squeezed, in this point, gear pump and piston pump have similar aspects

b. The main working parts are gear (rotor) and fixed bushing (stator). Due to the special geometry of the two parts, separate sealing chambers are formed. The flow of the medium is uniformly pushed along the axial direction. The internal flow rate is low and the volume remains unchanged



## Specification

No.	Item	Description	No.	Item	Description
1	Application	Suitable for mixing, pouring and dispensing of two-component AB glue.	15	Maximum speed	500mm/sec
2	Operation mode	Full automatic proportioning and quantitative dispensing	16	Customized jig	1 table * 2 jigs
3	Measurement method	Stepper motor + gear pump / rotary piston pump servo motor + piston pump	17	Proportioning/Dispensing accuracy	±1.5% / ±1.5%
4	Transmission mode	Micro stepping motor + synchronous belt (optional servo motor + ball screw)	18	Mixing ratio	1:1 / 1:5 / 1:3
5	XYZ axis stepping motor	high precision micro stepping motor with driver	19	Dispensing speed	1g/sec ~ 15g/sec
6	Drum mixing system	one set / two sets (optional)	20	Programming system	Teaching box
7	Guideway	Taiwan TBI / Shangyin	21	Power Supply	AC220V 50HZ 0.5KW
8	Static mixing valve	gear pump / screw pump, depend on the glue	22	Work environment	Humidity 20-90% temperature 0-40°C
9	Rubber transport pipe	Teflon pipe	23	Air supply	0.4 ~ 0.7MPa
10	Control system	PLC + touch screen (digital input)	24	Input power	Full voltage AC110V ~ 220V
11	Measurement method	Stepper motor + metering pump	25	External control interface	RS232
12	Transmission mode	Stepper motor + guide rail	26	Dimension	2180 ( L ) * 1170 ( W ) * 1600 ( H ) mm
13	A/B barrel capacity	A:10L,B:10L / A:10L,B:50L / A: 10L, B:30L /,depend on mixing ratio	27	Weight	130kg
14	Working range	500(X)×500(Y)×100(Z)mm			

# WELCOME INQUIRY

Please visit

[www.smthelp.com](http://www.smthelp.com)

Find us more

<https://www.facebook.com/autoinsertion>

Know more our team

<https://cn.linkedin.com/in/smtsupplier>

Welcome to our factory in Shenzhen China

See more machine working video, please Youtube [Auto Insertion](#)

Google

Auto+insertion, to get more informations

Looking forward to your email

[info@smthelp.com](mailto:info@smthelp.com)