



## Application:

A B double glue dispensing machine is a kind of automatic machine that can control the fluid, drip, coat, and seal the liquid on the surface or inside of the product, so as to achieve the functions of sealing, fixing, and waterproof. Generally, two-component glue is used. It is mainly used for bonding, pouring, coating, sealing, and filling glue, oil, and other liquids in the production process. The automatic glue pouring machine can realize the pouring of irregular figures such as point, line, arc, and circle.

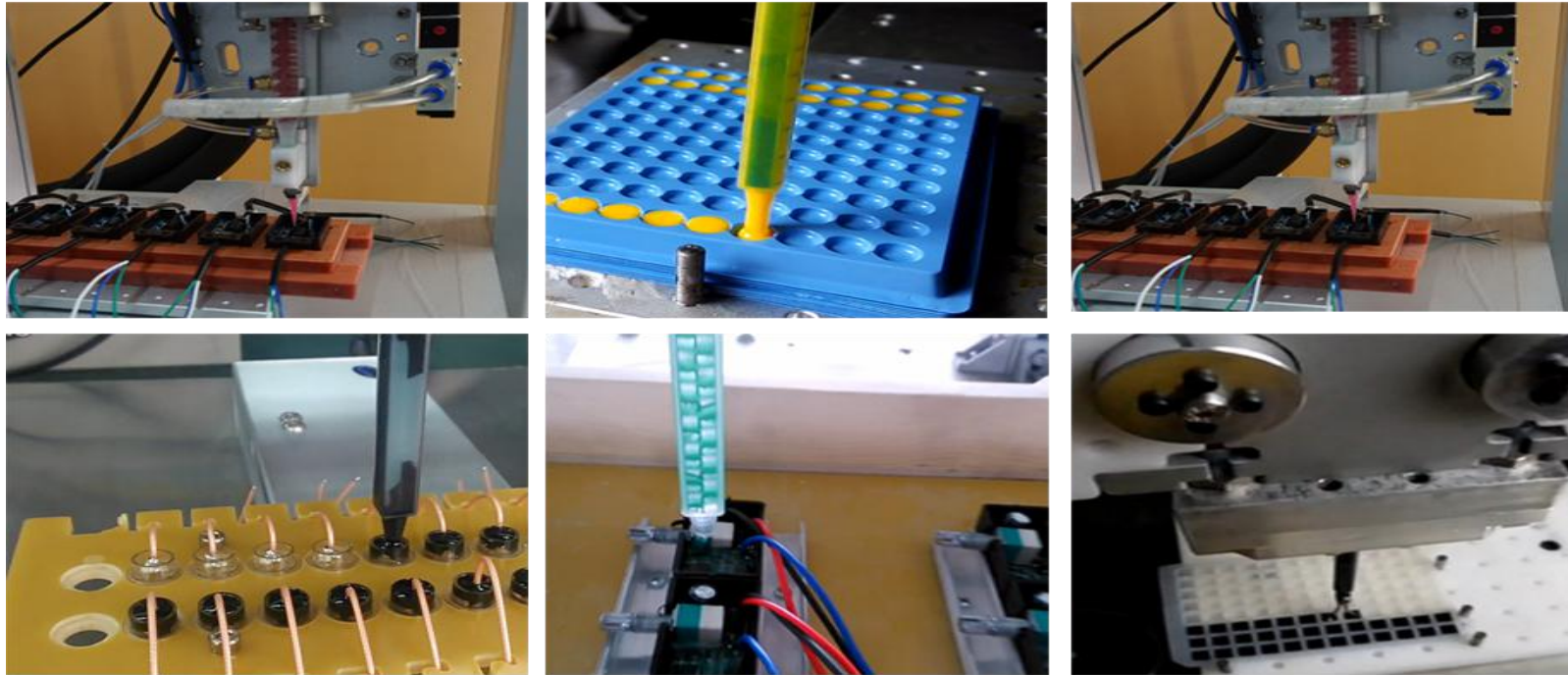


## Features

1. Chinese-English operation interface, easy to operate and easy to learn, professional error correction design
2. The powerful course editing operating system can store multiple groups of data and improve the programming time of line changing
3. Three axis platform can be customized to realize contact, fast glue filling, no jitter and improved stability
4. Glue proportion, time, speed, glue volume, easy to set
5. Adjustable instantaneous suction stop valve, good proportioning, anti wire drawing, glue dripping, overflow, a new breakthrough
6. Precision wear-resistant metering gear pump, continuous rubber, can be customized
7. Automatic research and development of speed servo dynamic mixing system to ensure uniform mixing, unique rotary seal design
8. Equipped with automatic pressure sensing, timing glue discharging function and automatic cleaning function
9. The multi-layer filtration system is equipped with sensitivity liquid level sensor alarm system

Note:Optional the glue tank/metering pump/glue pipe heating function;

## Application



epoxy resin AB glue



polyurethane resin AB



Organic silica gel AB



Styrofoam

## Overall structure



## A B barrel



with the functions of anti precipitation/stirring, heating, automatic vacuumizing and glue auto adding.

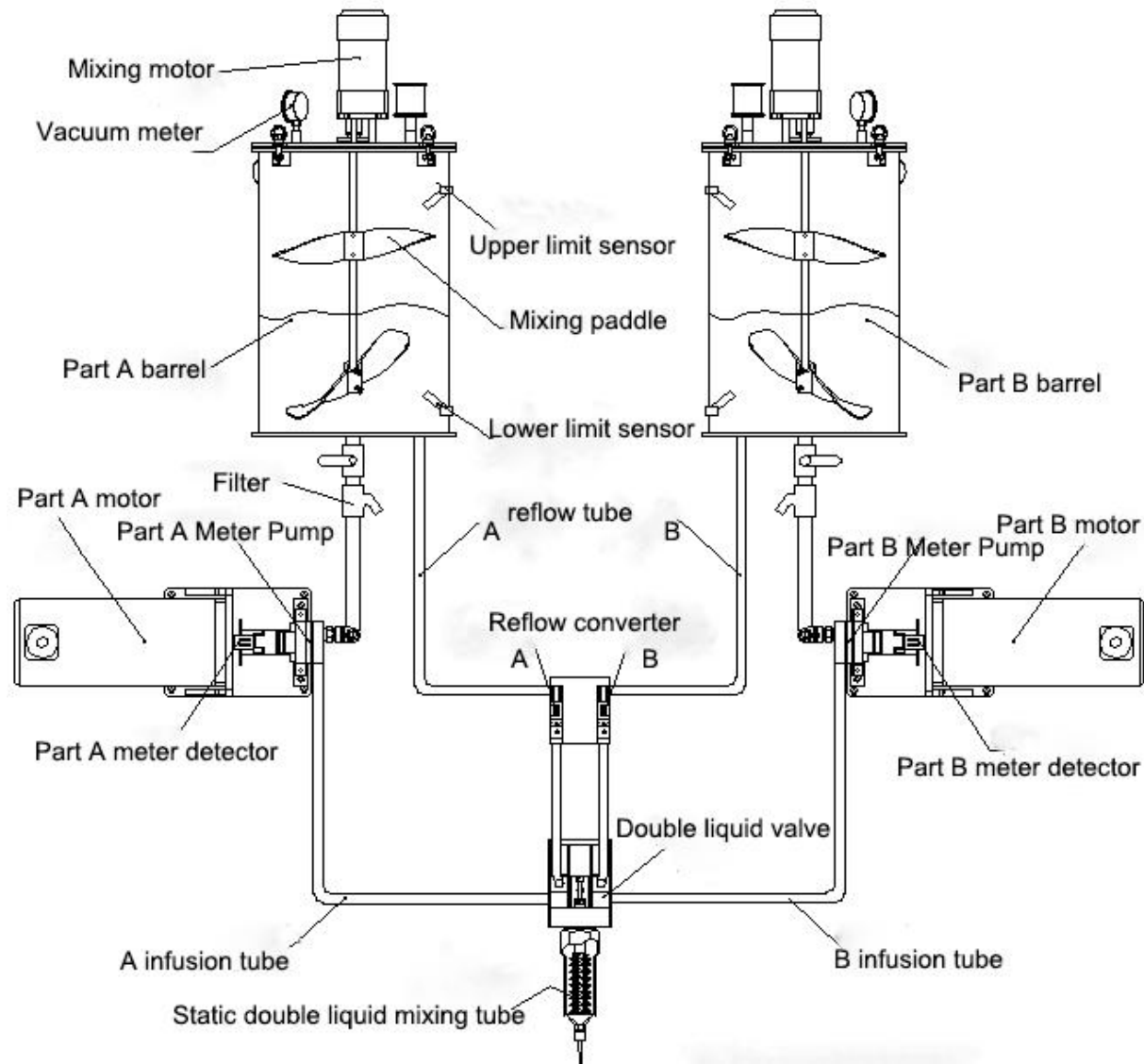
Optional to 30L or 8L  
It can withstand positive and negative pressure

## Vacuum pump (option)



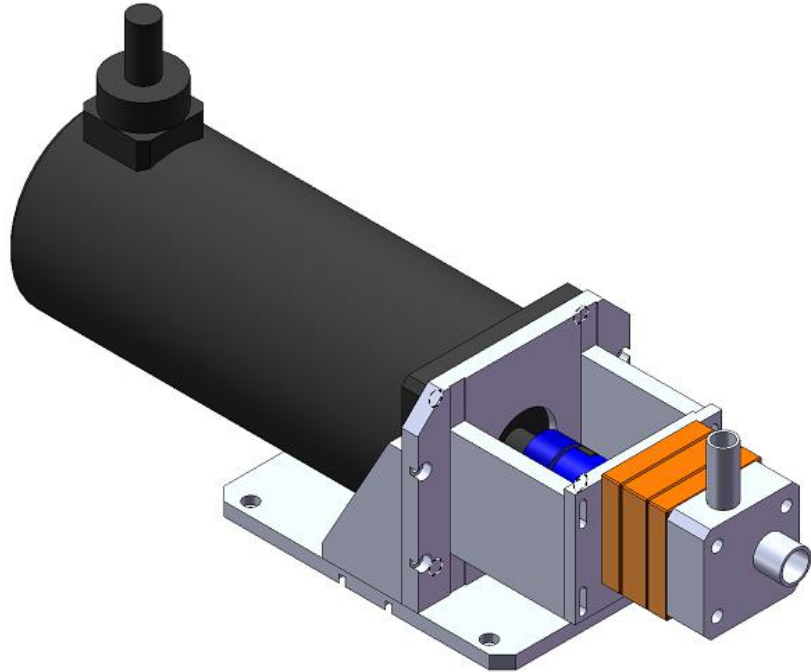
It has good stability, smokeless, oil-free and pollution-free. Small size, light weight, low noise, easy to start.

## Working Principle



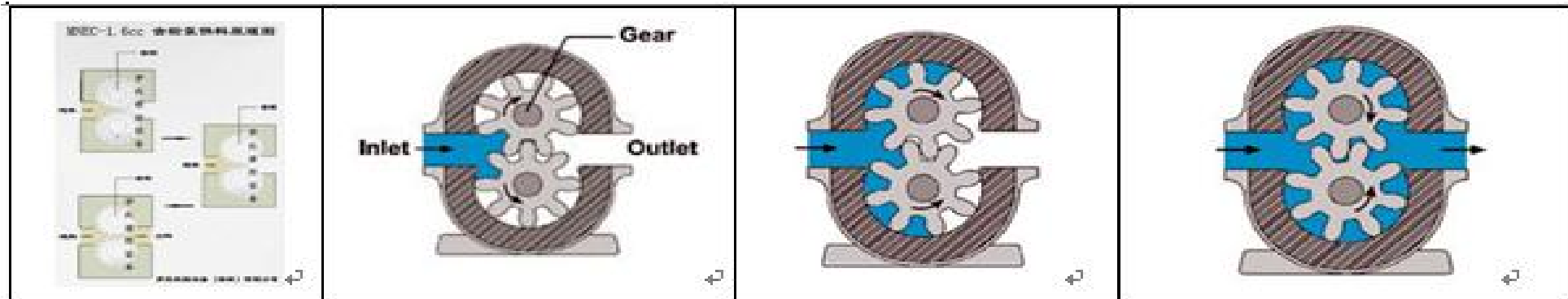
The control system controls the time, proportion and size of the manipulator's walking and dispensing. The glue mixing system completes the dispensing and conveying glue to the glue outlet head according to the command issued by the control system, and the three-axis motion platform completes the actions required by the program according to the command issued by the control system.

## Principle of metering proportioning--gear pump



a. Gear pump is a new type of pump which works according to the principle of rotary meshing volume type. Through the matching stator and rotor screw, the fluid is continuously extruded when the rotor rotates. The material in the metering chamber is more squeezed, in this point, gear pump and piston pump have similar aspects

b. The main working parts are gear (rotor) and fixed bushing (stator). Due to the special geometry of the two parts, separate sealing chambers are formed. The flow of the medium is uniformly pushed along the axial direction. The internal flow rate is low and the volume remains unchanged



## Specification

<b>Application</b>	Suitable for mixing, pouring and dispensing of two-component AB glue.	<b>Customized jig</b>	No need
<b>Measurement method</b>	Stepper motor + gear pump / rotary piston pump servo motor + piston pump	<b>Proportioning accuracy</b>	±2%
<b>Transmission mode</b>	Micro stepping motor + synchronous belt (optional servo motor + ball screw)	<b>Dispensing accuracy</b>	±2%
<b>Stirring system</b>	one set / two sets (optional)	<b>Mixing ratio</b>	1:1 / 1:5 or 5:1 / 10:1
<b>Guideway</b>	Taiwan TBI / Shangyin	<b>Dispensing speed</b>	1g/sec ~ 15g/sec, or 5g/sec~30g/sec
<b>Static mixing valve</b>	gear pump / screw pump, depend on the glue	<b>Power Supply</b>	AC220V 50HZ, 2.5KW
<b>Rubber transport pipe</b>	Teflon pipe	<b>Work environment</b>	Humidity 20-90% temperature 20-60 °C
<b>Measurement method</b>	Stepper motor + metering pump / Rotary piston pump servo motor + piston pump	<b>Available viscosity</b>	<20000CPS
<b>Transmission mode</b>	Stepper motor + guide rail (option: servo motor+ball screw)	<b>Material barrel</b>	15L/30L/70L , Optional vacuum defoaming or heating function
<b>A/B barrel capacity</b>	A:10L,B:10L / A:10L,B:50L / A: 10L, B:30L /,depend on mixing ratio	<b>Dimension</b>	2180 ( L ) *1170 ( W ) *1600 ( H ) mm
<b>Working range</b>	600(X)×300(Y)×100(Z)mm	<b>Weight</b>	130kg
<b>Maximum speed</b>	300mm/sec	<b>Motion type</b>	PCB move (by labor)

# WELCOME INQUIRY

Please visit

[www.smthelp.com](http://www.smthelp.com)

Find us more

<https://www.facebook.com/autoinsertion>

Know more our team

<https://cn.linkedin.com/in/smtsupplier>

Welcome to our factory in Shenzhen China

See more machine working video, please Youtube [Auto Insertion](#)

Google

Auto+insertion, to get more informations

Looking forward to your email

[info@smthelp.com](mailto:info@smthelp.com)