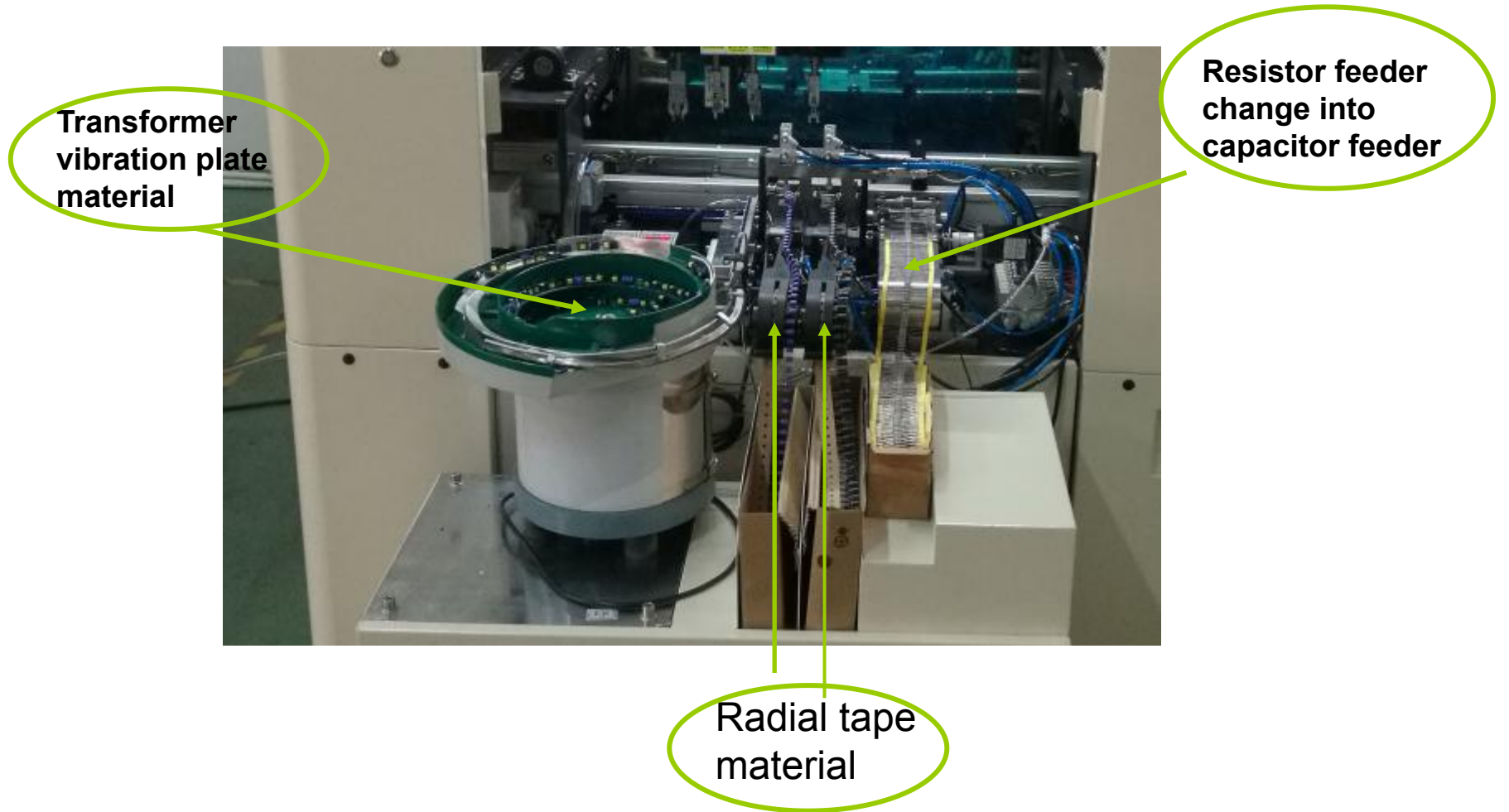


Shenzhen Southern Machinery Auto Insertion Solution

1. Odd Form Insertion Machine Appearance



2. Odd Form Insertion Machine Specs

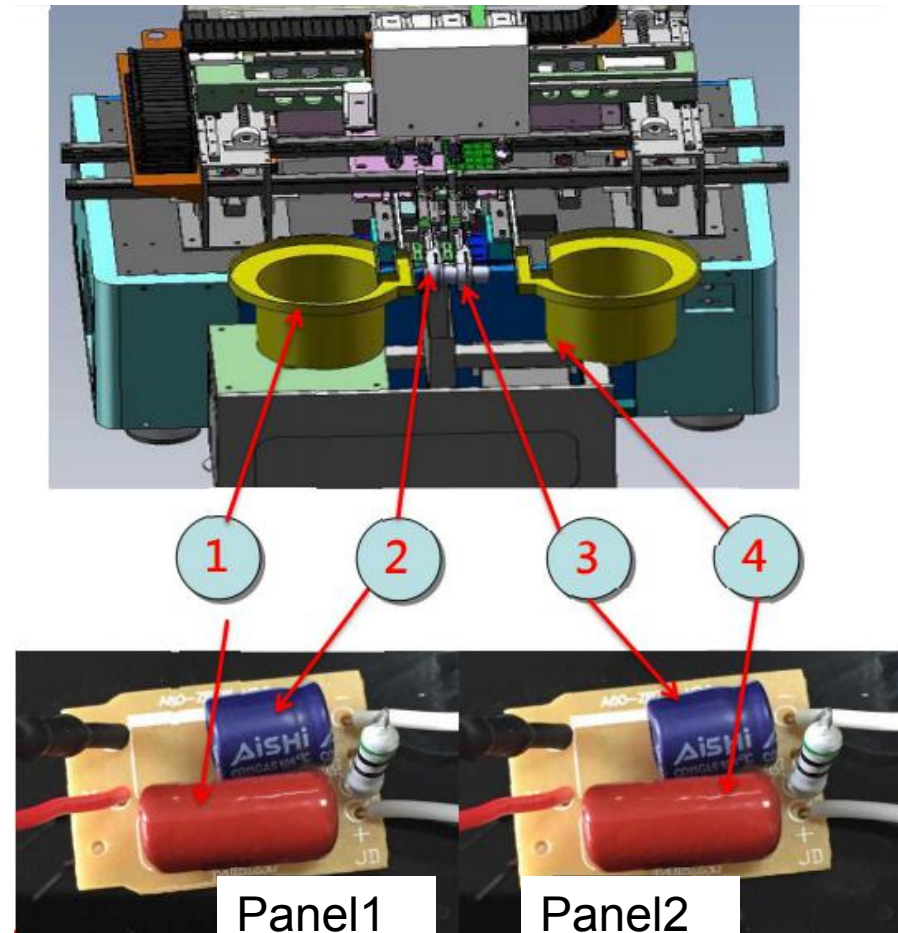
| |
|--|
| 1 Insertion head :4heads |
| 2 Feeder Qty: 4pcs; (Tape or vibration adjustable) |
| 3 Insertion Speed: 4000CPH |
| 4 Insertion accuracy: $\pm 0.05\text{mm}$ |
| 5 Component size: 3*3-30*30mm |
| 6 Component height: 50mm |
| 7 PCB size: 50*50-300*300mm |
| 8 PCB thickness: 0.8-5.0mm |
| 9 Dimension: (L*W*H) 1200*1100*1600mm |
| 10 Machine weight : 1000kg |
| 11 Power supply: 220V,AC 0.8KVA (Save power) |
| 12 Air pressure: 0.4-0.6MPa |
| 13 Machine noise: 75 decibel |



3.1.1 Product's analysis and insertion solution

- Capacitor and Resistor in one (Axial E-CAP insertion)

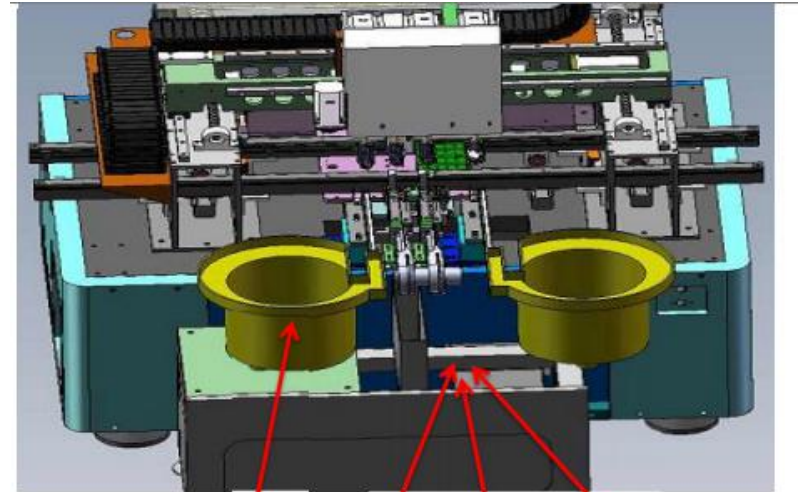
| Capacitor and E-CAP insertion | | |
|-------------------------------|------------------------------------|----------------|
| Item | component name | Feeding method |
| 1 | Radial capacitor insertion panel 1 | Vibrator |
| 2 | Axial E-CAP insertion panel 1 | Tape |
| 3 | Axial E-CAP insertion panel 2 | Tape |
| 4 | Radial capacitor insertion panel 2 | Vibrator |



3.1.2 Product's analysis and insertion solution

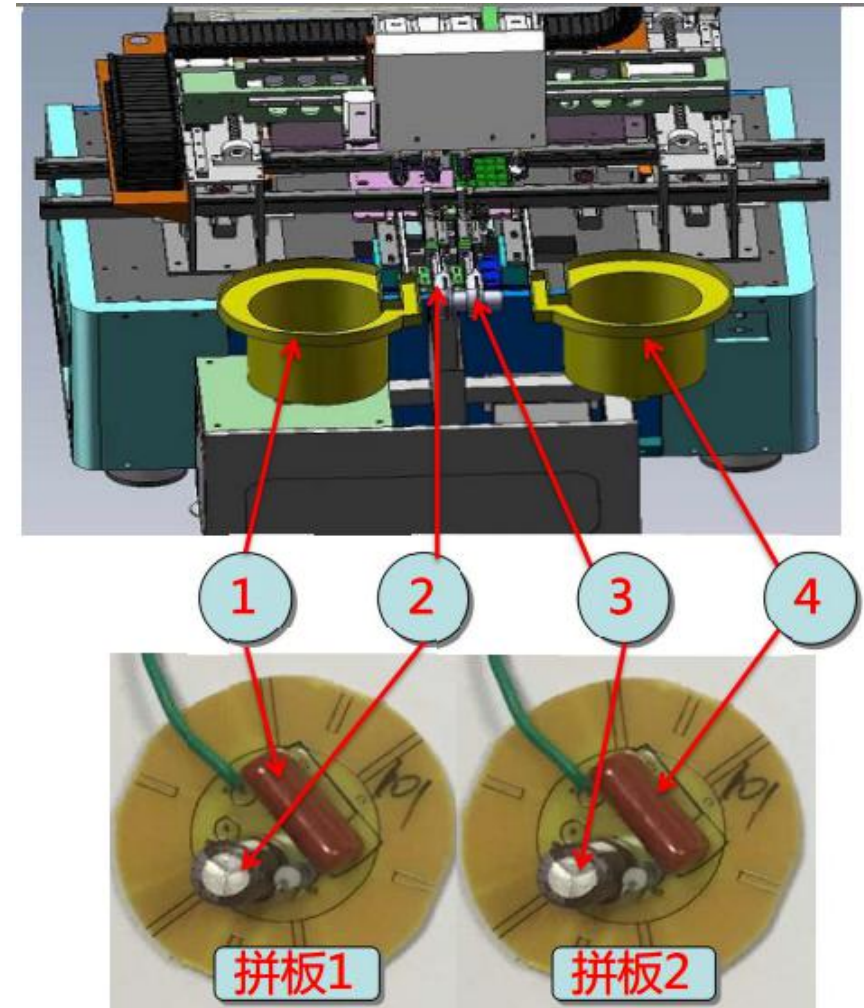
- Capacitor and Resistor in one (Radial E-CAP insertion)

| Capacitor and E-CAP insertion | | |
|-------------------------------|------------------------------------|----------------|
| Item | component name | Feeding method |
| 1 | Radial capacitor insertion panel 1 | Vibrator |
| 2 | Radial E-CAP insertion panel 1 | Tape |
| 3 | Radial E-CAP insertion panel 2 | Tape |
| 4 | Radial capacitor insertion panel 2 | Vibrator |



3.2 Product's analysis and insertion solution - Optoelectronic integration

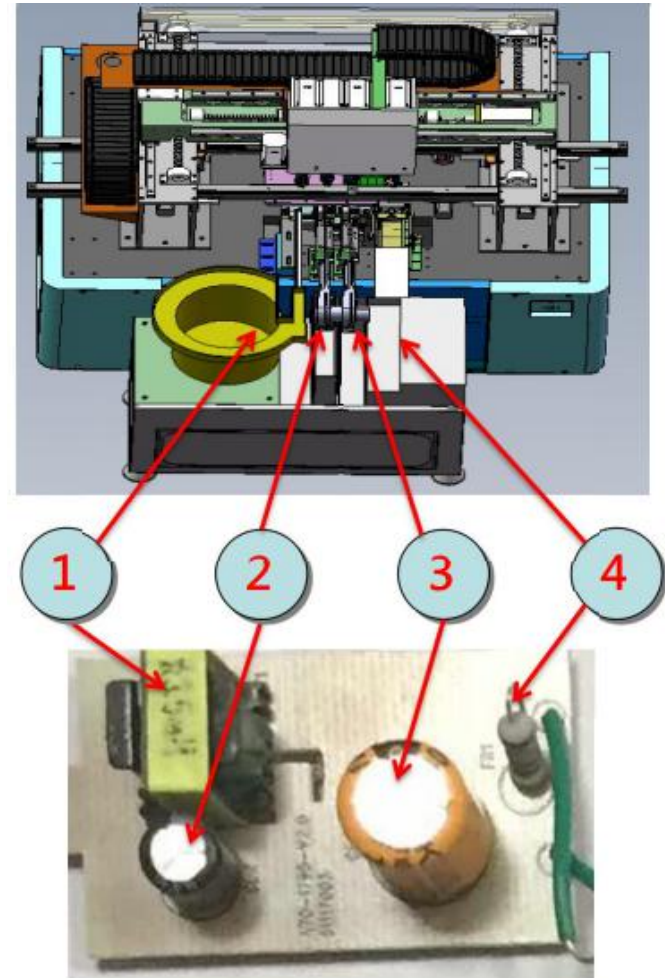
| Capacitor and E-CAP insertion | | |
|-------------------------------|------------------------------------|----------------|
| Item | component name | Feeding method |
| 1 | Radial capacitor insertion panel 1 | Vibrator |
| 2 | Radial E-CAP insertion panel 1 | Tape |
| 3 | Radial E-CAP insertion panel 2 | Tape |
| 4 | Radial capacitor insertion panel 2 | Vibrator |



3.3 Product's analysis and insertion solution - IC Power

| Solution | | |
|----------|---------------------------|----------------|
| Item | component name | Feeding method |
| 1 | Inductance | Tape |
| 2 | Radial E-CAP insertion | Tape |
| 3 | Radial E-CAP insertion | Tape |
| 4 | Radial resistor insertion | Tape |

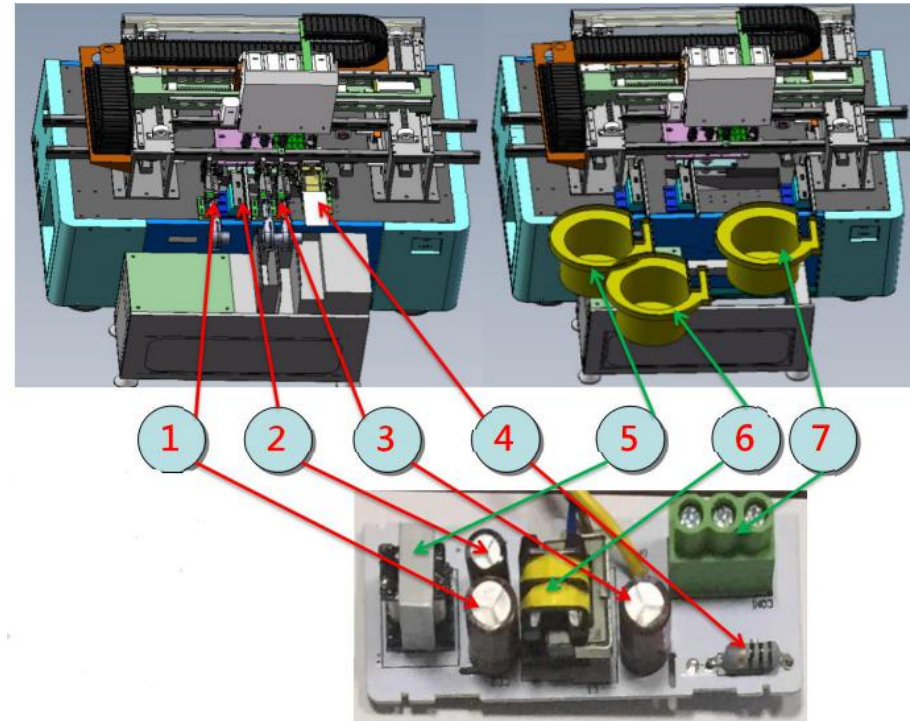
Noted: Radial resistor
insertion speed: 3800CPH



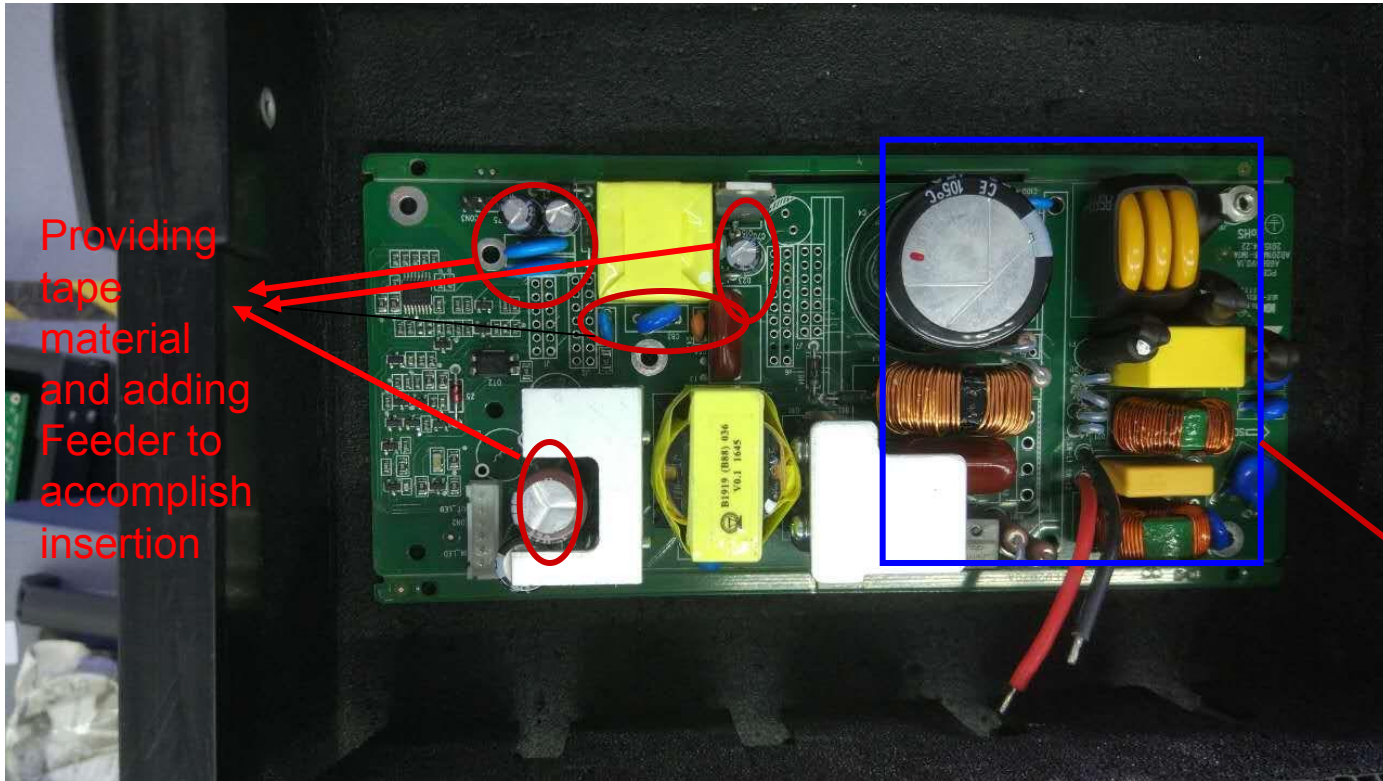
3.3 Product's analysis and insertion solution

- Lamp

| Insertion Solution | | |
|--------------------|--------------------------|----------------|
| Item | component name | Feeding method |
| 1 | Radial E-CAP insertion | Tape |
| 2 | Radial E-CAP insertion | Tape |
| 3 | Radial E-CAP insertion | Tape |
| 4 | Axial resistor insertion | Tape |
| 5 | Inductance | Vibrator |
| 6 | Inductance | Vibrator |
| 7 | Inductance | Vibrator |



Conclusion



Providing
tape
material
and adding
Feeder to
accomplish
insertion

To provide a
multi-layer
tube with a
tube material
to achieve
automatic
feeding
insertion

Welcome inquiry

1, Please visit : www.smthelp.com

2, Find us more: <https://www.facebook.com/autoinsertion>

3, Know more our team:
<https://cn.linkedin.com/in/smtsupplier>

4, Welcome to our factory in Shenzhen China

5, Google: Auto+Insertion

6, Looking forward to your email:
chan@smthelp.com