



**SOUTHERN  
MACHINERY**

**Southern Machinery Sales And Service Co Limited**

**NBHZ Series of**

- Dispensing;
- locking screw;
- Soldering;
- Plasma Processor;

[www.smthelp.com](http://www.smthelp.com)

[Glue Dispensing Machine NBHZ Series](#) [Page 3-5](#)

[Automatic locking screw NBHZ Series](#) [Page 6-10](#)

[Soldering Machine NBHZ Series](#) [Page 11-12](#)

[NBHZ-331-4lock screw soldering integrated machine](#) [Page 13](#)

[Plasma Processor NBHZ Series](#) [Page 14-15](#)

[More Info for Southern Machinery](#) [Page 15-16](#)



### Application Area:

In the product process, bonding, pouring, coating, sealing, filling, dripping, dots, lines, arcs, circles and other irregular curves can be continuously dispensed to achieve any 3D non-planar trajectory path dispensing.

### Feature:

- Glue dispensing is smooth, glue cutting is crisp, no stringing, no glue leakage;
- Handheld teaching box, fast programming, easy to learn
- The dispensing speed and dispensing amount can be set independently;
- High-precision and durable imported motor control, precise dispensing accuracy
- Supports drawing points, lines, surfaces, arcs and other arbitrary dispensing shapes;
- The temperature of the hot melt point glue head is uniform, and the temperature deviation is  $\pm 1^{\circ}\text{C}$ ;
- You can choose 30ML or 300ML hot melt dispensing head according to the product.

### Technical Parameters

Product number	NBHZ-331 hot melt glue dispensing machine
work plan	300/300/100mm (can be customized)
Programmatically	Teachable handheld programming
Moving speed	300-800mm/S (can be customized)
Repeat accuracy	$\pm 0.02\text{mm}$
Machine load	X axis: 10kg Y axis: 10kg Z axis: 3-5kg
program storage	Can store 100 sets of processing data
Regulate temperature	0C-200C (adjustable)
transfer method	Timing belt/screw + precision linear guide
Display method	LED teaching box
Input power	Full voltage AC220V
ambient temperature	Room temperature-40C
environment humidity	20-90%
Dimensions	580*623*600mm
equipment weight	About 60kg



### Applicable glue:

UV glue, AB glue, EMI conductive glue, quick-drying glue, epoxy glue, paint, sealant, lubricating glue, silver glue, red glue, solder paste, thermal paste, anti-solder paste, thread glue, anaerobic glue, crystal Glue instant glue, rubber, ink and other fluids.

### Feature:

- Alternate human-machine operation, fast production rhythm,
- Can hold more glue
- Large capacity, uniform and smooth glue dispensing, and precise glue dispensing;
- Corrosion-resistant, pressure-resistant, durable, and guaranteed at the end of every dispensing cycle
- A suction force effectively solves the problem of serious glue leakage and wire drawing
- Dual stations work alternately to improve production efficiency without stopping the machine.

### Technical Parameters

Product number	NBHZ-5331 double-station automatic dispensing machine
work plan	500/300/300/100mm (can be customized)
Programmatically	Teachable handheld programming
Moving speed	300~800mm/S (can be customized)
Repeat accuracy	±0.02mm
Machine load	Y axis: 10kg (can be customized)
program storage	Can store 100 sets of data
Glue output	0.01ml
transfer method	Timing belt/screw + guide rail
Display method	LED teaching box
Input power	Full voltage AC220V
Dispensing valve	Back suction valve (can be matched with dispensing valve according to actual needs)
ambient temperature	Room temperature-40C
environment humidity	20-90%
Pressure barrel	Different specifications of pressure barrels can be selected according to needs
Dimensions	720*623*600mm



- **Feature:**

- It has functions such as drawing points, lines, arcs, circles, and irregular curve continuous tweening input programs, and can dispensing glue in three dimensions;
- The glue collection effect is good and no leakage occurs;
- High speed, stable operation, good dispensing effect;
- XY area array, translation and rotation calculation function, reverse use of material tray, suitable for positioning in different jobs;
- The glue quantity, thickness, glue coating speed, glue dispensing time, and glue stop time can all be set by parameters, and the glue output is stable and no glue leaks;
- It is suitable for dispensing various large-scale products. The module adopts a gantry structure to facilitate product replacement and improve production efficiency.

**Applicable glue:**

Various solvents, silicone glue, adhesives, UV glue, AB glue, EMI conductive glue, quick-drying glue, epoxy glue, paint, sealant, hot glue, lubricating glue, silver glue, red glue, solder paste, thermal paste, anti-solder paste, transparent paint, screw fixing agent, anaerobic adhesive, anti-wear adhesive, crystal glue, instant glue, rubber, ink, etc.





### Applicable Screw:

- Conditions of use: The total length of the screw is >1.2 times the screw diameter, and no movable washers are allowed;
- Screw sizes can be customized from M0.6 to M9, and the total screw length does not exceed 40MM;
- The screw material is not affected (aluminum alloy, stainless steel, copper, plastic, self-tapping screws, etc.); the screw head type can be universal (slot, cross, triangle, hexagon, etc.).

### Feature:

- Touch screen control interface, data is clear at a glance;
- Adopting imported guide rail structure, wear-resistant and long life
- It has intelligent detection functions, including screw leakage lock, floating lock, sliding tooth and other alarm functions.
- Dual-platform alternating lock payment, the machine does not stop and the efficiency is doubled;
- Strong versatility and flexible operation, suitable for screw locking of multiple products;
- Continuous feeding provides screw counting function, no screws are stuck, and locking is smooth:

### Technical Parameters

Product number	NBHZ-5331 fully automatic screw locking machine
work plan	500/300/300/100mm (can be customized)
Programmatically	PLC touch screen
Moving speed	300~800mm/S (can be customized)
Repeat accuracy	±0.02mm
Machine load	X axis: 5kg Y axis: 5kg Z axis: 5kg
program storage	Can store 999 sets of files
Conveying method	Adsorption type
transfer method	Timing belt/screw + guide rail
Display method	touchscreen
Input power	Full voltage AC220V
Lock-up time	0.8~1.5 seconds (depending on the length of the screw)
Electric batch quantity	1
Dimensions	720*623600mm
equipment weight	70kg

# NBHZ-5331X Double position automatic screw locking machine (with Automatic loading and unloading function)



### Applicable Screw:

- Conditions of use: The total length of the screw is >1.2 times the screw diameter, and no movable washers are allowed;
- Screw sizes can be customized from M0.6 to M9, and the total screw length does not exceed 40MM;
- The screw material is not affected (aluminum alloy, stainless steel, copper, plastic, self-tapping screws, etc.); the screw head type can be universal (slot, cross, triangle, hexagon, etc.).

### Feature:

- The product is placed manually and the robot automatically takes it out to maximize production efficiency.
- Adopting imported guide rail structure, wear-resistant and long life
- Using servo electric screwdriver, the locking is accurate, the rotation speed is fast, and the response is fast.
- With intelligent detection function, it can detect missing locks, floating locks, sliding teeth, etc.
- Strong versatility and flexible operation, suitable for screw locking of multiple products
- Duplex platforms work alternately, doubling efficiency
- Continuous feeding can provide screw counting function and anti-missing function.

### Technical Parameters

Product number	NBHZ-5331X automatic locking screw machine
work plan	500/300/300/100mm (can be customized)
Programmatically	Handheld programming teaching box
Moving speed	300~800mm/S (can be customized)
Repeat accuracy	+0.02mm
Machine load	X axis: 5kg Y axis 5kg Z axis: 5kg
program storage	Can store 999 sets of files
screw conveyor	Adsorption type
transfer method	Timing belt/screw + guide rail
Display method	LED teaching box
Input power	Full voltage AC220V
Lock-up tim	0.8~1.5 seconds (depending on the length of the screw)
Electric batch quantity	1
Blanking mode	Manipulator
Alarm function	Sliding teeth, floating locks, leaky locks, etc.



### Applicable fields and scope:

- Mainly used for products with special requirements for torque and locking details, such as: LED panel lights, automobile engines and parts assembly, electronic product assembly, compressors, engine manufacturers, various parts, vehicles and parts, aviation, valves Wait for product lock payment.

### Feature:

- The intelligent electric batch machine has fast rotation speed, accurate torque, high-speed response and low failure rate;
- It has intelligent detection function and can detect sliding teeth, missing locks, floating locks, etc.;
- Strong versatility, flexible operation, suitable for screw locking of multiple products;
- The equipment is compact in appearance and can be easily placed into the production line. It is equipped with a front-loading and rear-removing function as standard:
- Double Y-axis, double Rice metal structure, plus protective grating

### Technical Parameters

Product number	NBHZ-331-2 double locking screw machine
work plan	300/300/100mm (can be customized)
Programmatically	PLC touch screen + handheld programming box
Moving speed	300-800mm/S (can be customized)
Repeat accuracy	Soil 0.02mm
Machine load	X axis: 5kg Y axis: 5kg Z axis: 5kg
program storage	Can store 999 sets of files
Conveying method	Adsorption type
transfer method	Timing belt/screw + guide rail
Display method	touchscreen
Input power	Full voltage AC220V
Lock-up time	0.8-1.5 seconds (depending on the length of the screw)
Electric batch quantity	2
Input power	220V/50HZ
equipment weight	70kg

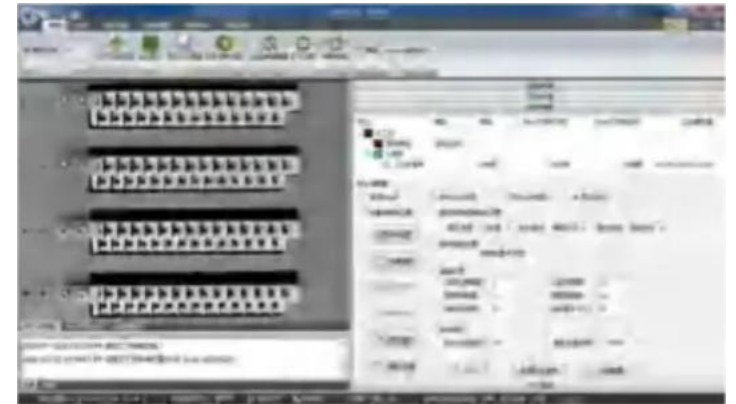
## On-line CCD Screw locking Machine NBDP-OL-1



- **Parameter interface:**
- The locking speed, torque value and other data of each screw can be accurately set. Optional: comes with standard version software, which provides subsequent software and hardware interfaces for connecting to the MES system.



## Independently developed visual positioning system



- **Feature:**
- 1. Supports multiple visual algorithms for single mark, double mark, and round hole positioning;
- 2. Supports laser height measurement, floating lock accuracy is 0.02mm, and accurately detects the locking status of each screw;
- 3. Support online and offline modes, and cooperate with assembly line box robot operations;
- 4. Supports dxf import of bit coordinates to improve programming efficiency;
- 5. Support product code scanning, and support uploading of the entire lock payment process data to the MES system;
- 6. Supports multiple retrieval methods and lock payment methods;
- 7. Support multi-power batch work

## Waveform comparison interface:

Displays the detailed waveform data of the entire process when each screw is locked. The sampling accuracy is 3mS. Select a part of the area to enlarge the waveform. Right-click to return to the last enlarged display state of the waveform.

Cabinet type visual double-sided  
lock screw machine NBDP-OL-3



Cabinet type visual front and rear  
locking screw machine NBDP-OL-4





### Applicable fields and scope:

- **Communication industry:** data cables, chips, USB, PCB boards
- **Optoelectronic industry:** LED display screen, LED light strip, LED rectifier, LED ball lamp, LED lamp beads, etc.;
- **Home appliance industry:** air conditioner remote controls, air conditioner control panels, computer speakers, TV switch connectors, etc.
- **Automotive industry:** ignition switches, automobile fuel sensors, navigators, motorcycle flashlights, etc.;
- **Toy industry:** toy handle connectors, circuit boards, etc.



- **Feature:**
- Precise thermostat, high power and fast heating
- With functions such as welding, spot welding, drag welding, and automatic cleaning
- Dual heads are welded at the same time and dual work stations work alternately to improve efficiency without stopping the machine;
- Accurate tin feeding, no tin clogging, and tin breaking function to effectively save tin wires
- Using high-frequency constant temperature soldering iron, the temperature is uniform, energy-saving and environmentally friendly
- The equipment uses imported accessories with stable and durable performance and uniform solder joints.
- Program optimization, simple operation, teaching programming.

### Technical Parameters

Product number	NBHZ-5331 double-head double-station soldering machine
work plan	500/300/300/100mm (can be customized)
Tin out system	Independently designed tin breaking system
Heater	Fast heating core + high-precision thermocouple
temperature error	±2° C
Moving speed	300~800mm/s (can be customized)
Repeat accuracy	±0.02mm
Display method	LED teaching box
Programmatically	Handheld teaching programming
program storage	100 sets of files
transfer method	Screw/guide rail+motor
temperature range	Room temperature~480° C
heating power	150~300W (can be selected according to product requirements)
power supply	Full voltage AC220V
Dimensions	1070*623*700mm

**NBHZ-331-2 Double splicing  
automatic soldering machine**



**NBHZ-331-3 Cabinet type visual soldering machine**



# NBHZ-331-4 Cabinet type visual lock screw soldering integrated machine

- **Feature:**

- Lock the screws first and then solder them, no transfer process is required;
- Reduce at least two workers and increase efficiency by more than 5 times;
- Independent mold opening, golden structure, beautiful appearance and smooth operation;
- Visual recognition of automatic soldering and automatic screw tightening;
- Continuous feeding, can provide screw counting function and anti-missing function;
- Constant torque, screw thread and floating lock, alarm function



- **Applicable fields and scope:**

- Conditions of use The total length of the screw is >1.2 times the screw diameter and no movable washers are allowed;
- Screw sizes can be customized from M0.6 to M9, and the total screw length does not exceed 40MM;
- The screw material is not affected (aluminum alloy, stainless steel, copper plastic, self-tapping screws, etc.);
- The screw head types can be universal (slotted, cross, triangular, hexagonal, etc.);

## Technical Parameters

Product number	HZ-cabinet visual lock screw soldering machine
work plan	300/300/100mm (can be customized)
Programmatically	Windows
Moving speed	300-800mm/S (can be customized)
Repeat accuracy	±0.02mm
Machine load	X axis: 5kg Y axis: 5kg Z axis: 5kg
program storage	Can store 999 sets of files
Conveying method	Adsorption type
transfer method	Timing belt/screw + guide rail
Targeting	CCD vision capture positioning
Input power	Full voltage AC220V
Lock-up time	0.8~1.5 seconds (depending on the length of the screw)
Electric batch quantity	1
Soldering tip	Optional
thermostat	Imported temperature control



- **Applicable fields and scope:**
- Automobile manufacturing industry
- Packaging industry
- Electronic and electrical industry
- Printing industry

- **Feature:**

The product is a plasma jet that can be used for surface treatment on various materials, such as polymer metals, glass, rubber, PCB circuit boards, etc. The benefits of using this product are:

- It can improve the bonding strength of plastic parts by ejecting a neutral and uncharged plasma flow that increases the surface energy of the materials. For example, PP materials can be increased several times after treatment.
- It can be used online on the production line, reducing costs and pollution. It does not produce any waste water and meets environmental protection requirements.
- It can allow ordinary glue to stick the box after plasma treatment, saving production costs.
- It has a concentrated and long spray flame that can cover a large area of the surface.

Technical Parameters	
Product number	NBHZ-331 singleand doublestation direct injection plasma processor
work plan	300/300/100mm (can be customized)
plasma power	600W/25KHZ
handling height	5-20mm
Handle wide format	8-15mm
Moving speed	300~800mm/s (can be customized)
Repeat accuracy	Soil 0.02mm
Display method	LED teaching box
Dimension mode	Handheld teaching programming
program storage	100 sets of files
transfer method	Screw/guide rail+motor
working gas	0.2~0.4Mpa
Number of nozzles	1
power supply	Full voltage AC220V
Dimensions	580*623*600mm



- **Applicable fields and scope:**
- Automobile manufacturing industry
- Packaging industry
- Electronic and electrical industry
- Printing industry

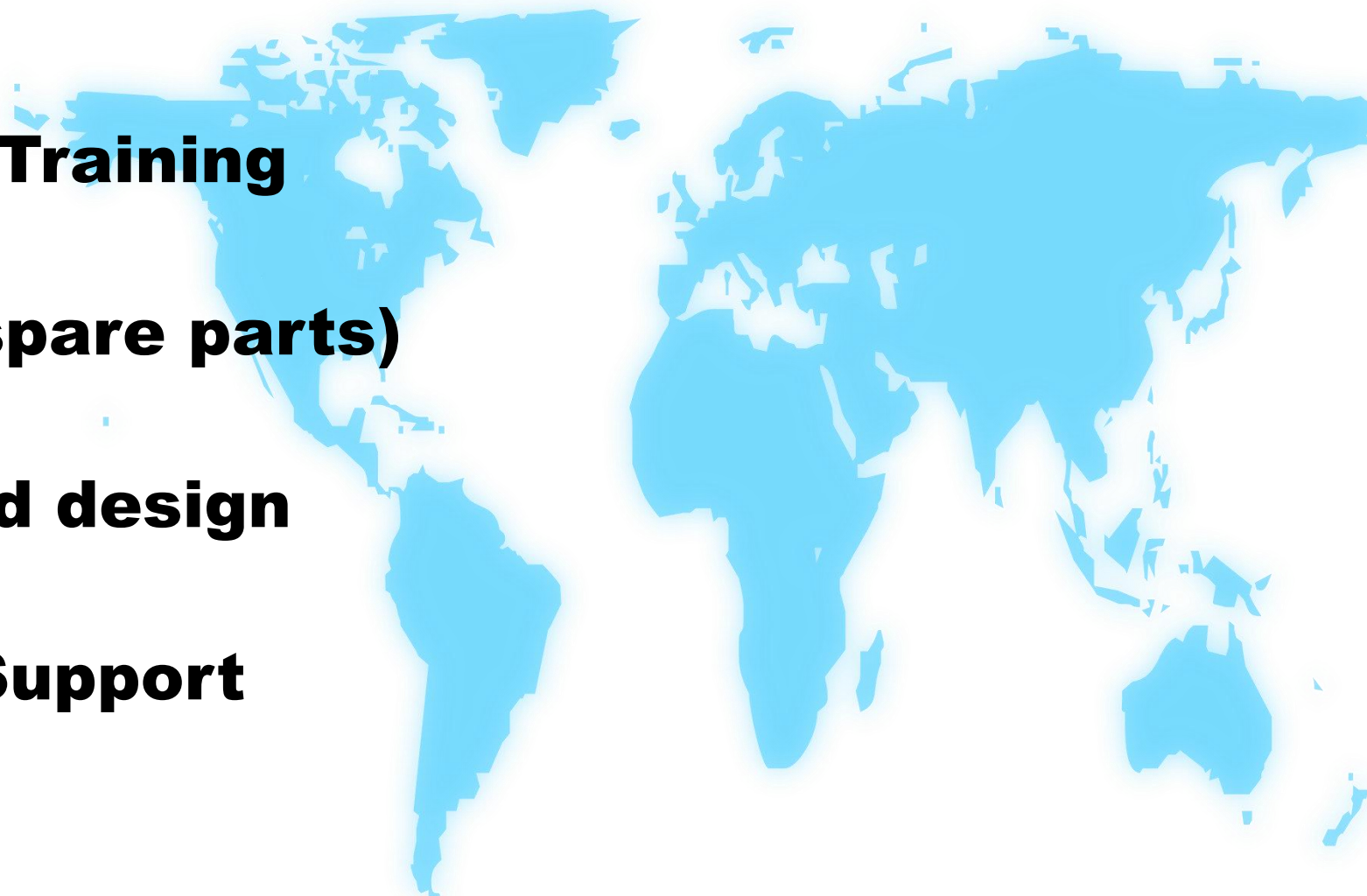
- **Feature:**

The product is a plasma jet that can be used for surface treatment on various materials, such as polymer metals, glass, rubber, PCB circuit boards, etc. The benefits of using this product are:

- It can improve the bonding strength of plastic parts by ejecting a neutral and uncharged plasma flow that increases the surface energy of the materials. For example, PP materials can be increased several times after treatment.
- It can be used online on the production line, reducing costs and pollution. It does not produce any waste water and meets environmental protection requirements.
- It can allow ordinary glue to stick the box after plasma treatment, saving production costs.
- It has a concentrated and long spray flame that can cover a large area of the surface.

Technical Parameters	
Product number	NBHZ-Handheld plasma processor
plasma power	600W/25KHZ
handling height	5~20mm
Handle wide format	8-15mm
Repeat accuracy	±0.02mm
working gas	0.2~0.4Mpa
Number of nozzles	1
power supply	Full voltage AC220V

# Best After-sales service

- **Free Installation/ Training**
  - **1 day lead-time (spare parts)**
  - **5 days customized design**
  - **7x24 Worldwide Support**
- 

# Welcome Inquiry

**Please visit**

**[www.smthelp.com](http://www.smthelp.com)**

**Find us more**

**<https://www.facebook.com/autoinsertion>**

**Know more our team**

**<https://www.linkedin.com/company/smtmachine>**

**Welcome to our factory in Shenzhen China**

**See more our machine please Google**

**[Auto Insertion](#)**

**Youtube**

**<https://www.youtube.com/c/Smthelping>**

**Looking forward to your email**

**[info@smthelp.com](mailto:info@smthelp.com)**