



Shenzhen Sunrai Technology Co., Ltd

Professional Design, Manufacturing and
Sales of non-standard automation system

专业设计，生产及销售非标准自动化系统



Prepare by: Angela Guo

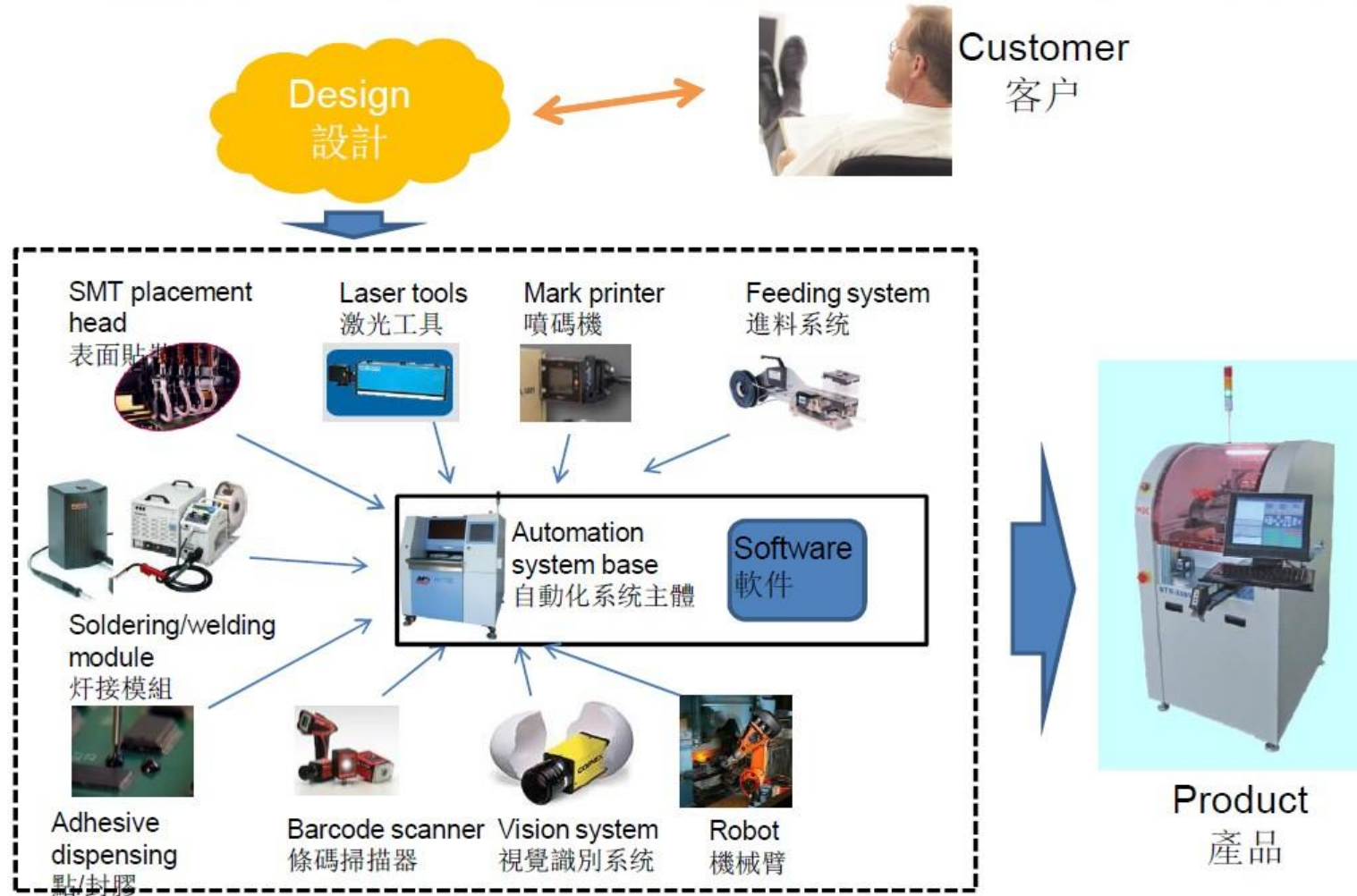


Shenzhen Sunrai Technology Co., Ltd

Shenzhen Sunrai Technology Co., Ltd. is an acclaimed technology and manufacturing company, operating in the Shenzhen, Guangdong, China. Established in Feb' 2009, Sunrai has rapidly achieved a reputation for professional excellence in high-tech innovation.

Sunrai currently has 300+ employees functioning throughout seven inland offices. Sunrai is connected with an extensive marketing service and sales network, with foreign agents representing Sunrai Enterprises throughout Brazil, India, Thailand, Malaysia, Indonesia and Singapore.

Sunrai develops, produces, and independently manufactures special Label Placer, Label Placement Machine.





Software and R&D 軟件及研發



Production Workshop 生產車間



Electric Assembly 电器组装



Production Workshop 生产车间

An application for Electronic Assembly Factory 應用於電子裝配工廠

Structure 結構:

1. Label Feeder 標貼進料器
2. Interface with customer SMT machine 跟客戶貼片机接口

标签供料器适用设备:

Assembléon®
Fuji®
JUKI®
Panasonic®
Samsung™
Siemens®
Universal®
YAMAHA®

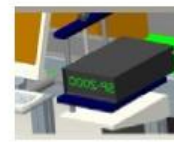
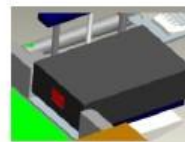
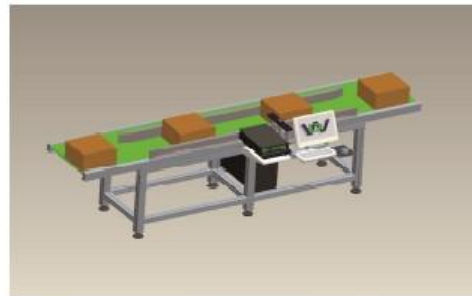


An application for Packing – Barcode injected printing 應用於包裝 - 條碼噴印



Structure 結構:

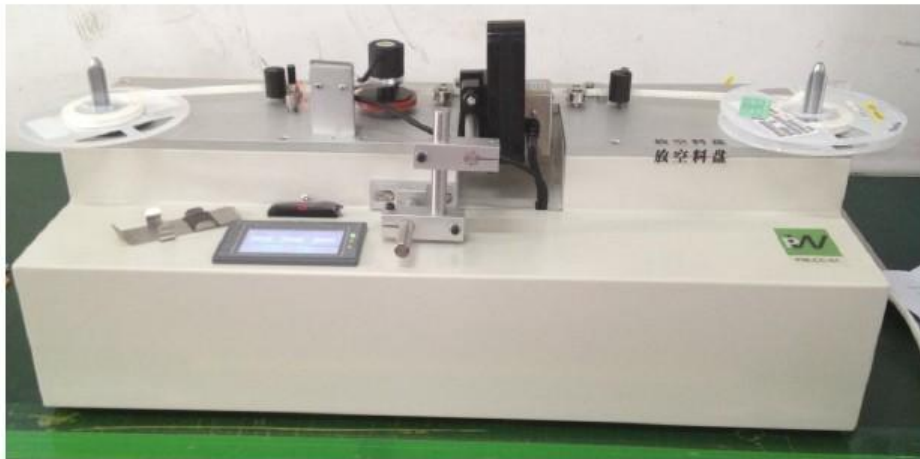
1. Conveying system 運輸系統
2. Inkjet Printer 噴碼機



Option 選項:

- I. Vision system to inspection printed objects 視覺識別系統用於檢查印刷品系統
- II. Upload barcode to system 掃描條碼上載到
- III. Tailor-made conveying system to send packaging to right place 訂做運輸系統傳送包裝到祇定地點

An application for Electronic Assembly Factory 應用於電子裝配工廠



Structure 結構:

1. Component counter
元件计数器
2. Inkjet printer 喷码机

Option 選項:


- I. Customer MES
connection 客户
MES系统连接


An application for Electronic Assembly Factory 應用於電子裝配工廠



OK/NG有以下三種定義:

  綠色為良品。

 紅色為重要不良品, '16GB' 容量有何不良都會出現紅色 NG。

 粉紅色為普通不良品, '16GB' 容量部份正常, 其他檢測部份出現不良出現粉紅色 NG。

Structure 結構:

1. XY platform XY 移动平台
2. Industrial camera 工业相机

Option 選項:

1. NG pick up mechanism 不良品剔除机构

An application for Electronic Assembly Factory 應用於電子裝配工廠

Structure 結構:

1. SMT placement head 表面貼裝頭
2. Label Feeder 標貼進料器
3. Vision system 視覺識別系統



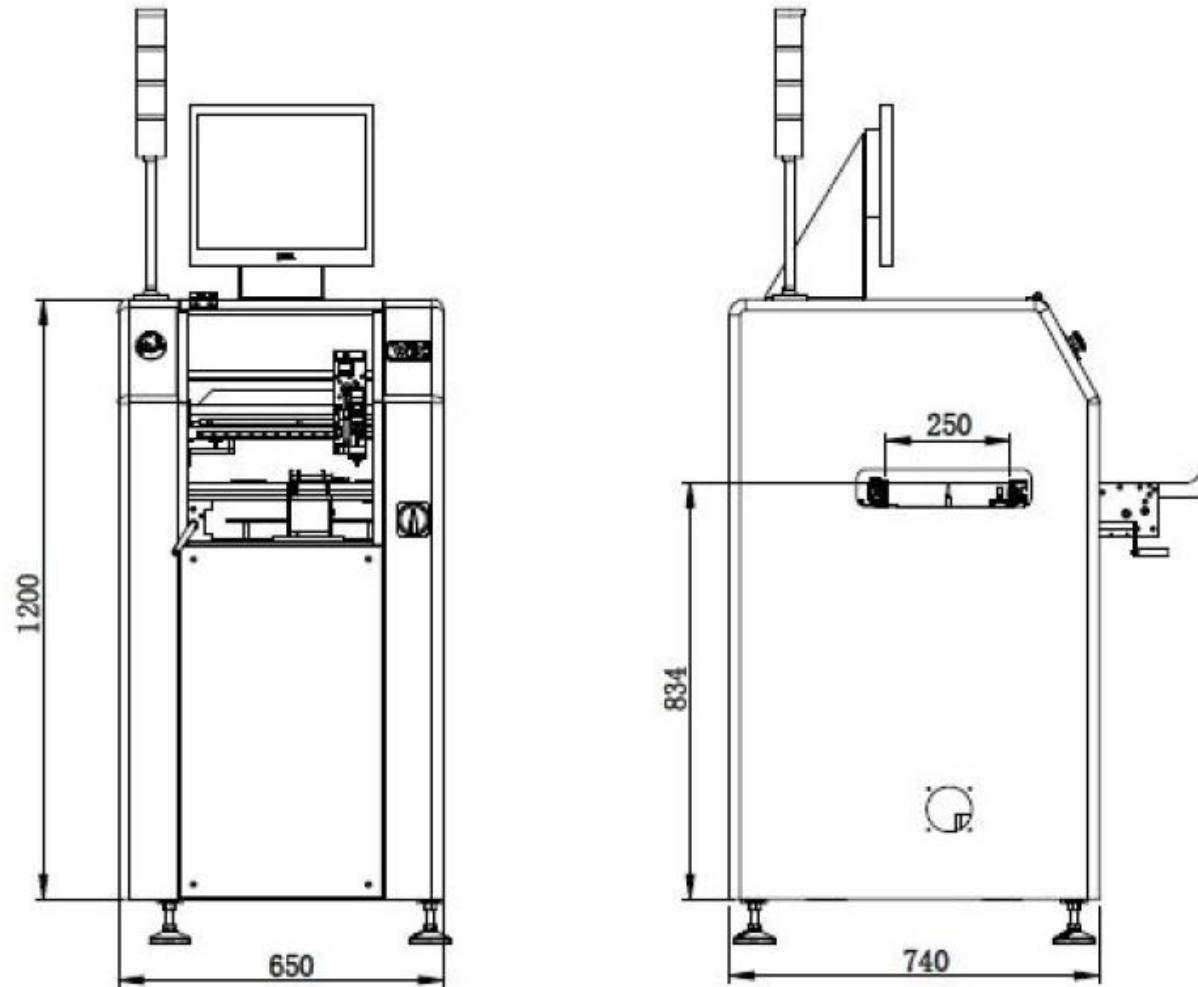
Option 選項:

- I. Barcode scanner camera for barcode check 條碼掃描器用於把條碼检测
- II. Zebra printer integration and inline printing 斑马打印机集成和在线打印



Model No: SR-W250-SH

- ◆ Strong and rigid mechanical design
- ◆ Smart Fiducial System
- ◆ Auto Label Feeder
- ◆ Buffering Nozzle
- ◆ Conveyor System



Machine specification:

- 1.1. Machine Dimension: (W) 650mm x (D) 800mm x (H) 1250mm.
- 1.2. PCB size: 50 x 50mm ~ 330 x 250 mm.
- 1.3. PCB flow: L to R, front fixed.
- 1.4. Mark camera: 1pce.
- 1.5. Placement head structure: single head, single nozzle, manual nozzle changing.
- 1.6. Conveyor height: 900mm+/-20
- 1.7. PCB loading time: approx. 4s.
- 1.8. Control system: Industrial PC control ; XY driven by stepping motor and HIWIN guide with belt. XY repeatability: +/-0.2mm . Z axis by stepping motor, Z axis resolution 0.01mm.
- 1.9. Placement speed: approx. 1000pcs/hour. Dependent on project.
- 1.10. Placement angle: 0-360 degree.
- 1.11. Label handled: standard 4x4mm ~ 40x40mm ; allowed customization if it exceeds standard.
- 1.12. Machine communication: SMEMA.
- 1.13. Power: AC 220V.
- 1.14. Air: 5kgf/cm²
- 1.15. Include 1 nozzle.
- 1.16. Option: barcode scanner/industrial camera for barcode scanning/checking, able to link customer's MES system.



Automatic Label Placement Machine

Model No: SR-350-SH



- ◆ Strong and rigid mechanical design
- ◆ Smart Fiducial System
- ◆ Bottom Vision Alignment System
- ◆ Vision Inspection
- ◆ Auto Feeder
- ◆ Buffering Nozzle
- ◆ Conveyor System



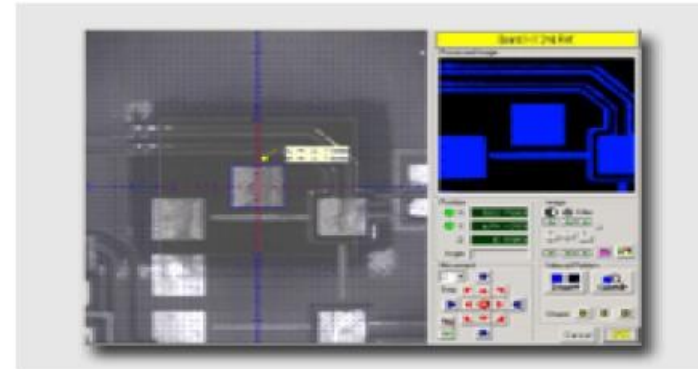
Automatic Label Placement Machine

- ◆ **Strong and rigid mechanical design**
Welded steel frame which guaranteed a strong and rigid mechanical design. Preloaded Ball Screws with Servo Motor system provides high Speed, Repeatability and Stability.



- ◆ **Buffering Nozzle**
The spring buffering design of Nozzle adjust the placement pressure for different heights of components automatically.

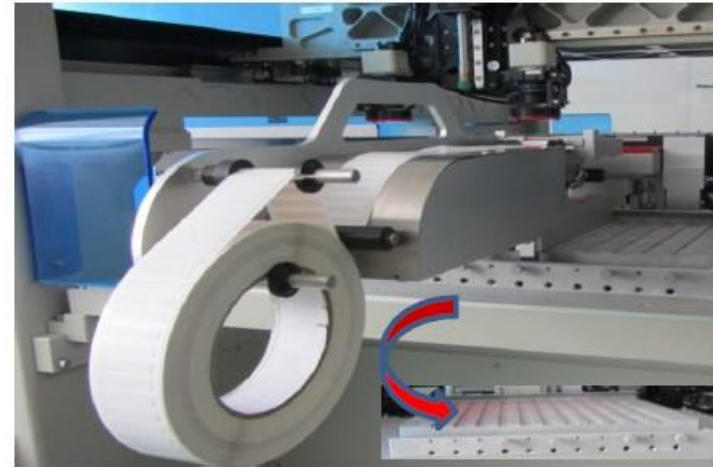
- ◆ **Smart Fiducial System**
Beside the standard fiducial mark, either square SMD PCB pad or plate-through hole also can be trained as fiducial mark.



- ◆ **Conveyor System**
The optional conveyor system with SMEMA Interface and motor-driven-width-control speed up the handling of PCB and in-line production.

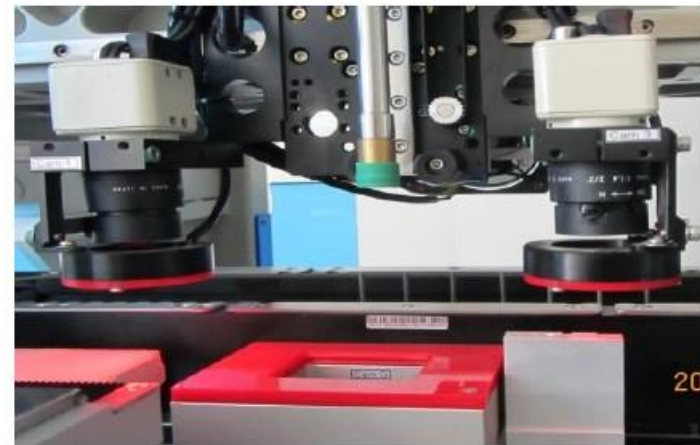
◆ Auto Feeder

The innovative design of feeder bases and mounting hardware allows almost limitless flexibility in feeder combinations and arrangement schemes.



◆ Bottom Vision Alignment System

A Bottom Vision Camera is used for large components 38 x 38mm (single shot vision) 150 x 100 mm (multiple shot vision) with alignment features on their bottom side.





Automatic Label Placement Machine

Machine Specification :

- 1.1. Machine Dimension: (L) 1200 x (W) 1000 x (H) 1300.
- 1.2. PCB size: 50 x 50mm ~ 440 x 330 mm.
- 1.3. PCB direction : L to R, fronted fixed.
- 1.4. Single head, single nozzle. Manual nozzle changing for changeover.
- 1.5. Two fiducial cameras.
- 1.6. One bottom camera: FOV 38mm x 38mm.
- 1.7. PCB loading time: approximately 4s.
- 1.8. Placement rate: Dependent on projects.
- 1.9. Front feeder base.
- 1.10. Resolution: XY axis 0.005mm servo motor; Z axis 0.02mm servo motor.
- 1.11. Rotation: 0-360degree (0.045degree/step) servo motor.
- 1.12. Placement accuracy with vision: Dependent on projects. Best case +/-0.04mm.
- 1.13. Including custom made label nozzle x 1.
- 1.14. Including custom made label feeder (85mm width), single sensor for label feeding.



Automatic Label Placement Machine

Thanks!

www.cnsunrai.com

Email: angela@sunrai.com

Tel: +86-755-83203237

Fax: +86-755-23240492

HP: +86-139 23898396