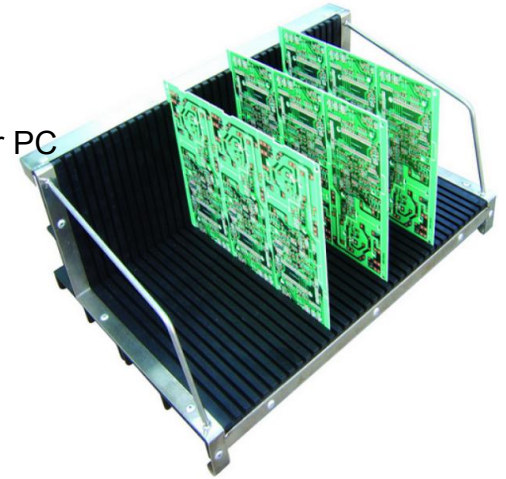


ESD PCB Plates Trolley



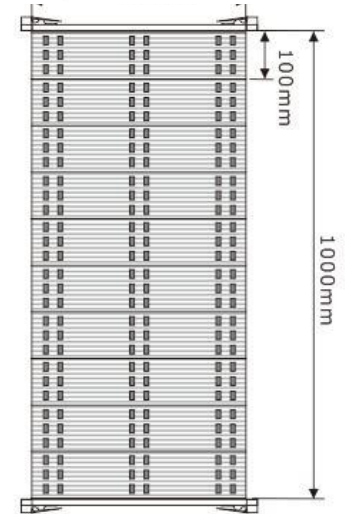
Model:H5501
 Material:Stainless steel & Antistatic Plastic/Carbon fiber PC
 Size:1100*600*1400mm or customised
 Storage capability: 38 pcs per basket **(38*8=304PCB)**
 Surface resistance:≤106Ω
 Shock absorption system is optio



310USD 1 PCS



Model:H5502
 Size (L×W×H)mm: 900×550×1300
 Size (L×W×H)mm: 1200×550×1300
 Slot of Side plate (W×H): 100cm×46cm
 Width: 5mm
 Depth: 4mm
 Pitch: 10mm
 Side Plate: Ten Pieces Assembled
 Flapper Size: 10cm×46cm



Note:

1. Side Plate: Sideboard is formed by 10 pcs small panels.
2. One standard trolley is with 2 pcs single-side flashbord, 2 pcs double-side flashboard. It can be added extra double-sideboard flashboard as per actual need .
3. One standard trolley 's Each column insert 100 pcs PCB, Total store **300 pcs** PCB.
4. System Resistance: Dissipative Type 1E6Ω~1E9Ω

200USD 1PCS

ESD CIRCULATION RACK



3USD 1PCS

ESD CIRCULATION RACK

Model:L1024

Contour Size(L×W×H)mm: 475×175×50

Width: 2mm Depth: 2.5mm Pitch: 15mm Slot: 24

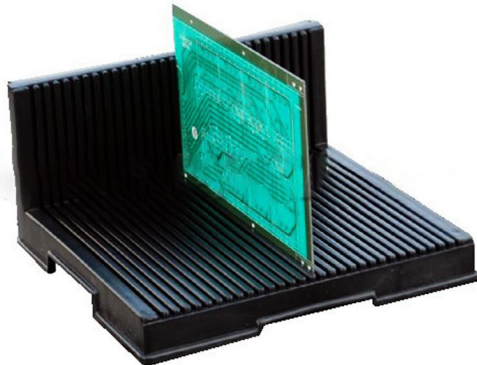
Width: 3mm Depth: 7mm Pitch: 15mm Slot: 25

Surface Resistance

Conductive Type <math><1E6\Omega</math> /

Dissipative Type $1E6\Omega\sim 1E11\Omega$ /

Above trays can be made to stand for $100\sim 160^{\circ}\text{C}$.C based on customer's request.



2.5USD

ESD CIRCULATION RACK

Model:L1025

Contour Size(L×W×H)mm: 265*205*95

Width: 2mm

Depth: 4.5mm

Pitch: 7mm

Slot: 25

Surface Resistance

Conductive Type <math><1E6\Omega</math> /

Dissipative Type $1E6\Omega\sim 1E11\Omega$ /

Above trays can be made to stand for $100\sim 160^{\circ}\text{C}$.C based on customer's request.



2.5USD

ESD CIRCULATION RACK

Model:L1026

Contour Size(L×W×H)mm: 340×130×22

Width: 3mm

Depth: 5mm

Pitch: 9mm

Slot: 34

Surface Resistance

Conductive Type <math><1E6\Omega</math> /

Dissipative Type $1E6\Omega\sim 1E11\Omega$ /

Above trays can be made to stand for $100\sim 160^{\circ}\text{C}$.C based on customer's request.

A PCB Magazine or PCB Rack is made of volume conductive polypropylene and metal, which is used to transport the PCB boards for automated assembly lines. The anti-static PCB magazines racks are an ideal aid in the production, storage and transportation of PCBs. The strong and robust polypropylene sidewall and metal frame guarantee that these PCB magazines racks are durable, which last very long time.

Adjustment Method: Handle Adjustable

Side Plate: Five Pieces Assembled

Base Material: Metal

Slot of side plate

Depth: 3.5mm

Width: 5mm

Pitch: 10mm

PCB board use standard

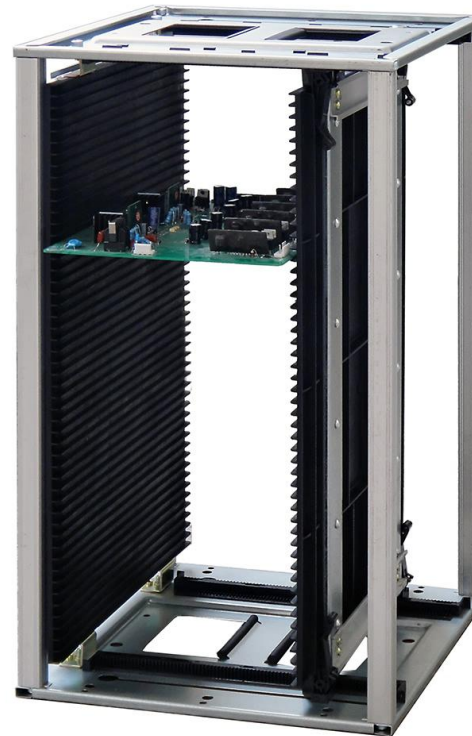
Adjustable Width: (50-250)mm

PCB Stored: 50

Surface Resistance

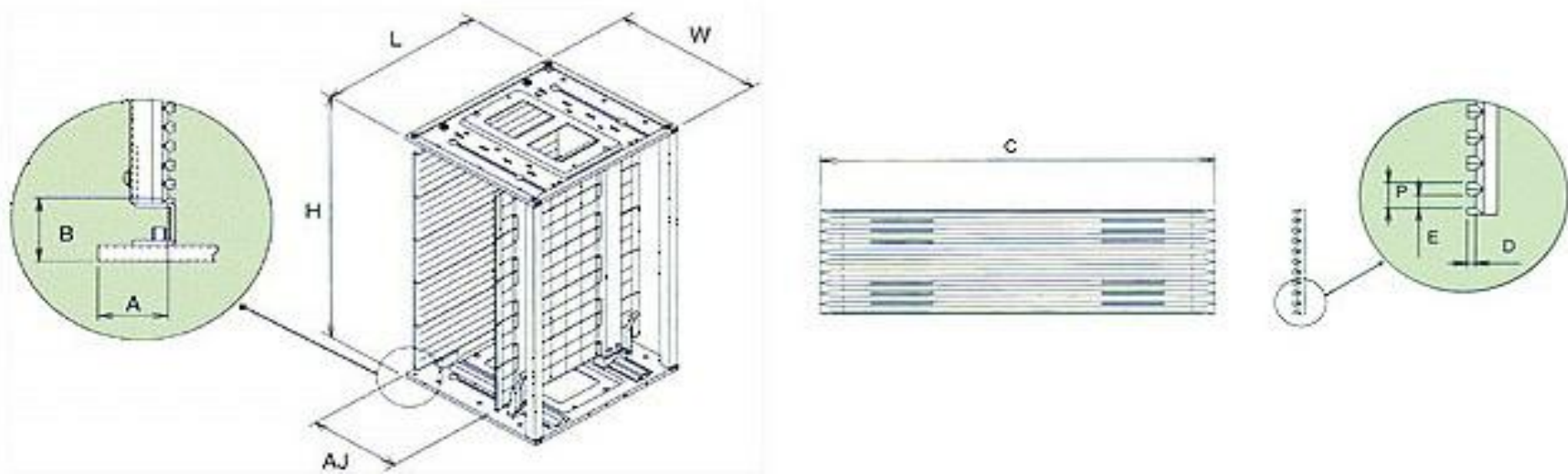
Conductive Type $< 1E6\Omega$ /

Dissipative Type $1E6\Omega \sim 1E11\Omega$ /



85°C 30USD

SMT magazine parameters using international standards



Model	Ref Position(mm)		weight	Gard guide(mm)				Outline Dimension(mm)			Heat-resistan Temperature			PCB Size(mm)
	A	B		C	D	E	P	L	W	H				AJ
G6601	34	34	6KG	355	3.5	5	10	355	320	563	85°C	120°C	220°C	50-250
G6602	34	34	8.8KG	460	3.5	5	10	460	400	563	85°C	120°C	220°C	50-330
G6603	34	37	10.5KG	535	4	5	10	535	460	570	85°C	120°C	220°C	50-400
G6604	34	37	13KG	535	4	5	10	535	530	570	85°C	120°C	220°C	50-460

Packing

1. side wall A



2. side wall B



3. top base



4. bottom base

7. screws



5. stopper

6. upholders



Thank you

Email: shaoyong@smthelp.com

whatsApp/WeChat: +86 137 6048 1664