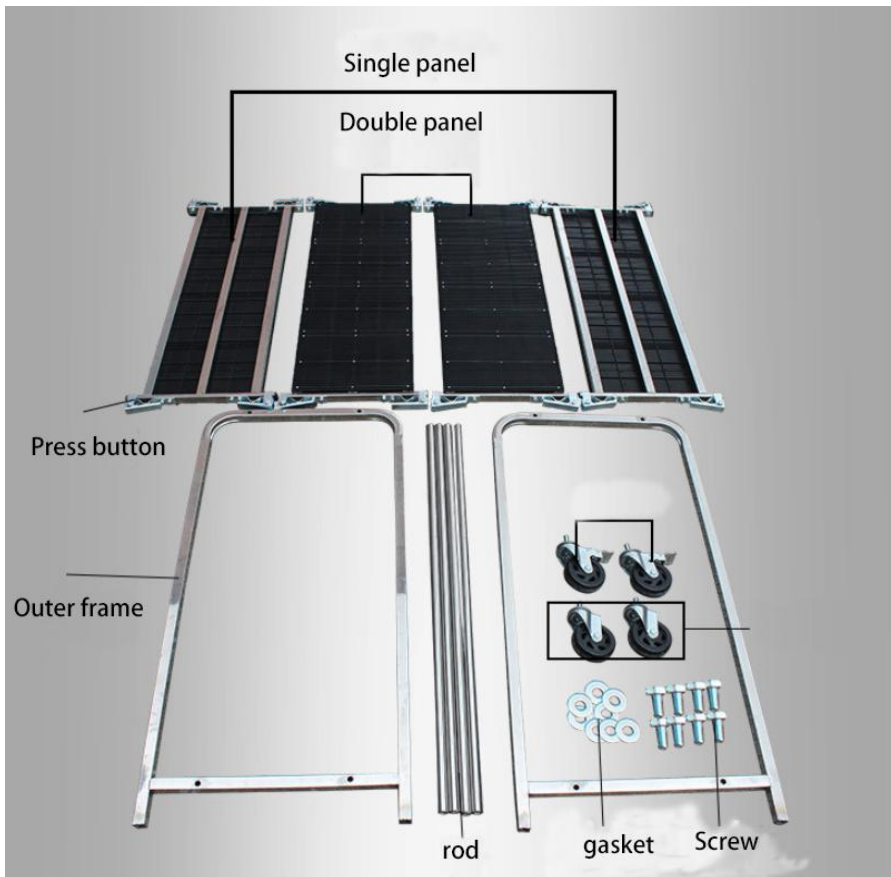




# Anti-static PCB turnover car —SMThelp.com



# Specially Designed for convenience



Convenient

anti-static

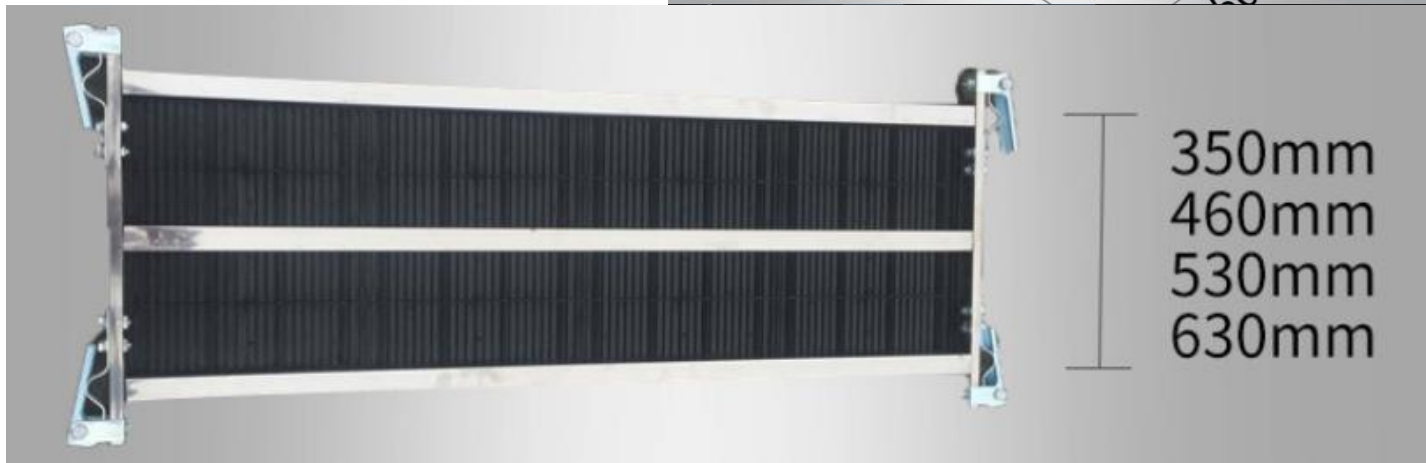
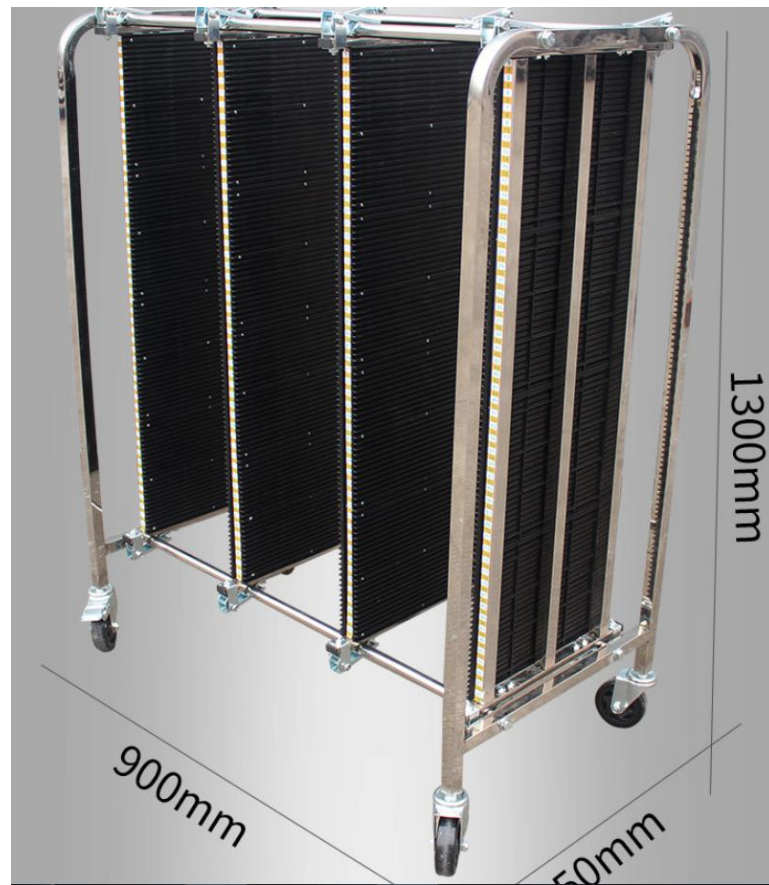
The large capacity

Durable, Fast

### Parameter specifications:

Description	Size	Number PCB can stored	Remark
350 Slot plate turnover car	900*550*1300	350 Slot plate 200pcs/set 350 Slot plate 300pcs/set 350 Slot plate 400pcs/set 350 Slot plate 500pcs/set 350 Slot plate 600pcs/set	The length can be lengthened or customized
460 Slot plate turnover car	900*600*1280	460 Slot plate 200pcs/set 460 Slot plate 300pcs/set 460 Slot plate 400pcs/set 460 Slot plate 500pcs/set 460 Slot plate 600pcs/set	
530 Slot plate turnover car	900*650*1280	530 Slot plate 200pcs/set 530 Slot plate 300pcs/set 530 Slot plate 400pcs/set 530 Slot plate 500pcs/set 530 Slot plate 600pcs/set	
630 Slot plate turnover car	900*700*1280	630 Slot plate 200pcs/set 630 Slot plate 300pcs/set 630 Slot plate 400pcs/set 630 Slot plate 500pcs/set 630 Slot plate 600pcs/set	

4 specifications of slot board  
to meet your various needs



1. Feel free to adjust  
Each turnover car can  
put 200-600 PCB  
boards, the width of  
each column can be  
adjusted according to  
the size of PCB board



2. Lightweight and durable, the wheel design adopts 2 directional brake wheels and 2 universal wheels with easy movement, lightweight and durable



Universal wheel



The directional wheel

3, easy to fix, each anti-static plate is equipped with 4 pressure buckle to fix the anti-static plate, using metal pressure buckle to easily fix the distance between each column



# Product display



# Installation display

1. Install the rod by aligning the outer frame with the hole position, and tighten the screws of four rods successively with hand or wrench (the gasket is under the screw).



# Installation display



2. Align single panel with press-buckle hole position



# Installation display

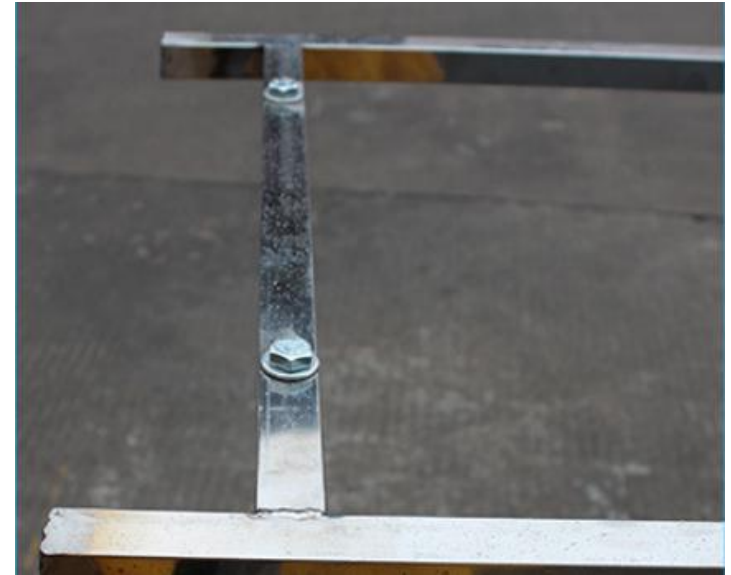


3. In turn into the double panel



# Installation display

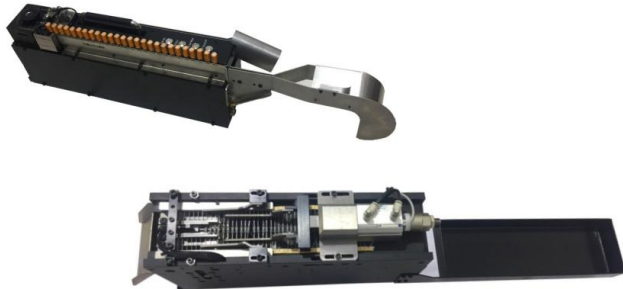
4. Put another single panel on the outer frame with screws



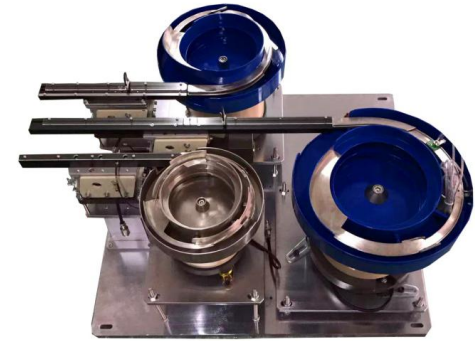
5. Finally, tighten the wheel



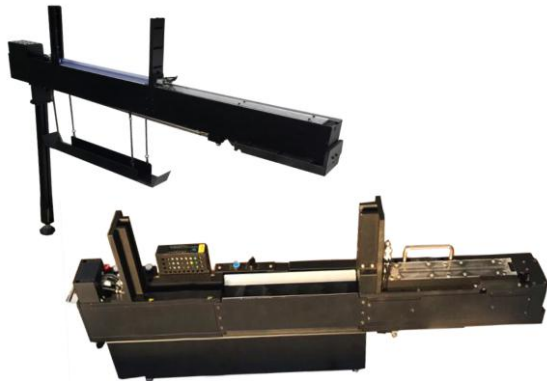
# Odd Form Feeder solution



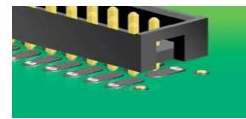
Radial and Axial Feeders



Vibration feeder



Tube feeder

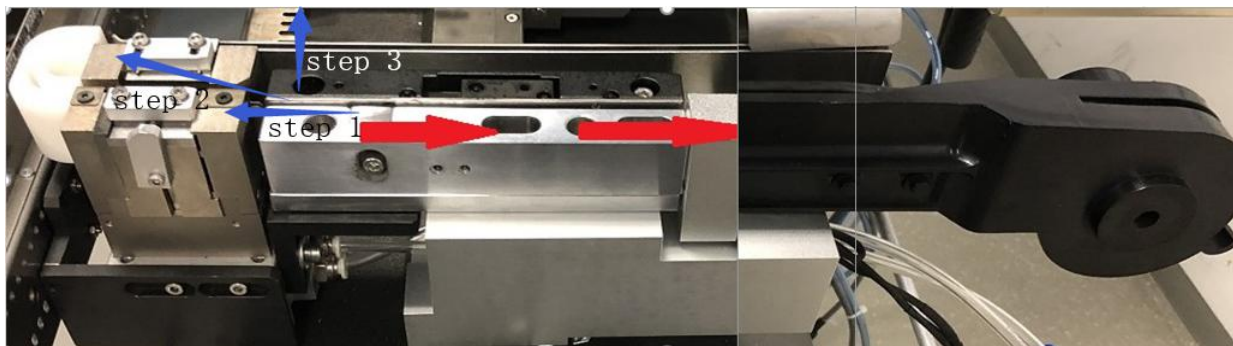
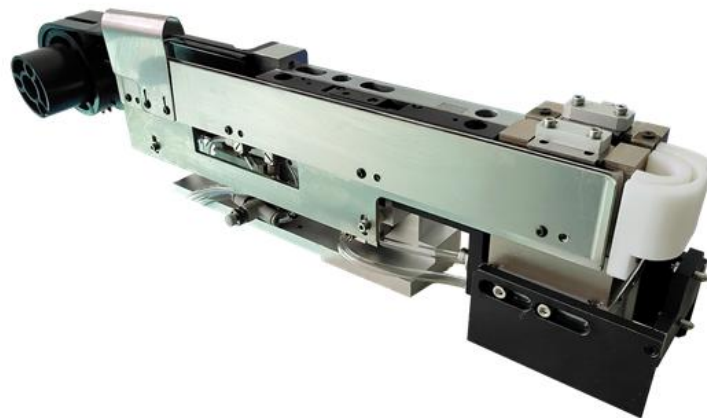


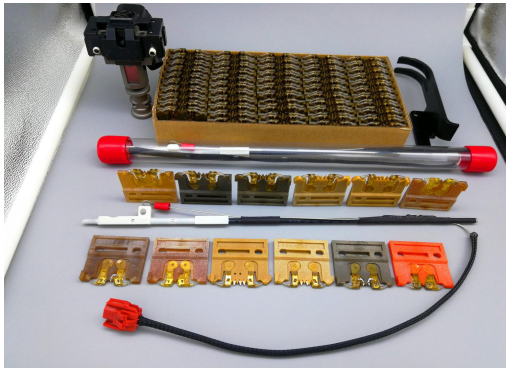
Solder Tin preform  
feeder



Label Feeder

# Customized THT feeder for SMT





Panasonic

Universal Instruments



FUJI XP142/143

yamaha YG200



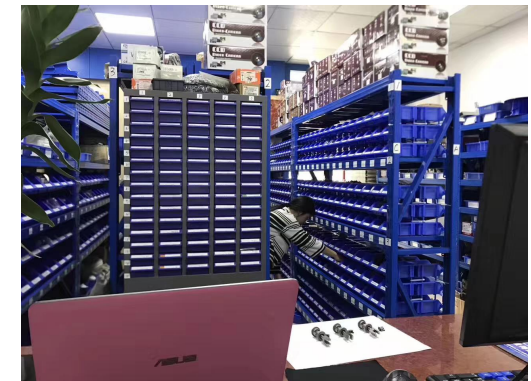
HA099

CN 110

FUJI NXT/H08M  
0.7

FUJI NXT/H04  
10.0

55USD    13USD    15USD    18USD    24USD    23USD



# Best After-sales service

- **Worldwide Support**
- **Free Installation/  
Training**
- **1 day lead-time (spare  
parts)**
- **1 Month customize  
solution**



# Welcome inquiry

1, Please visit : [www.smthelp.com](http://www.smthelp.com)

2, Find us more: <https://www.facebook.com/autoinsertion>

3, Know more our team: <https://cn.linkedin.com/in/smtsupplier>

4, Welcome to our factory in Shenzhen China

5, Google: Auto+Insertion

6, See machine working video: youtube - Auto Insertion

7, Looking forward to your email: [info@smthelp.com](mailto:info@smthelp.com)