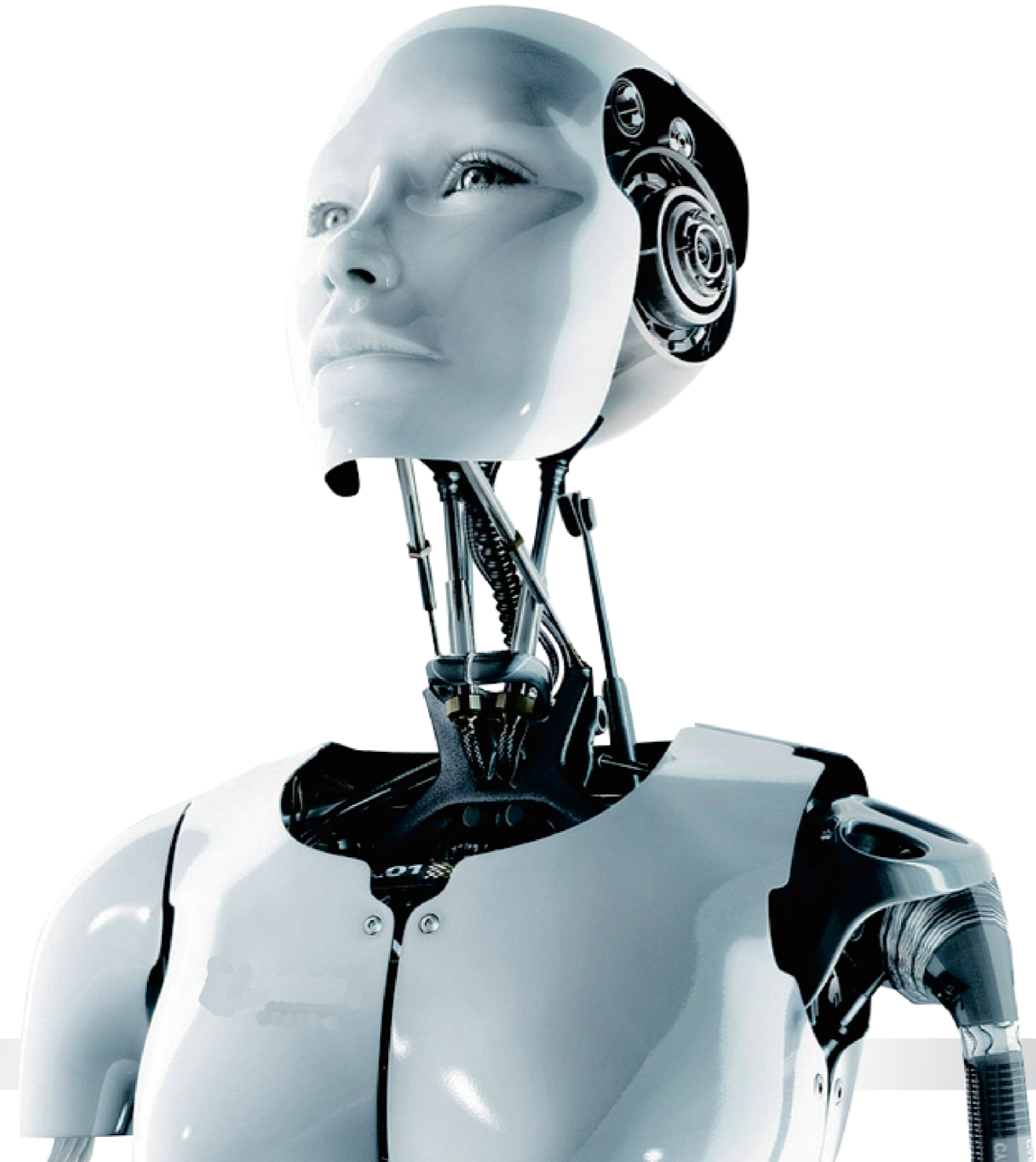


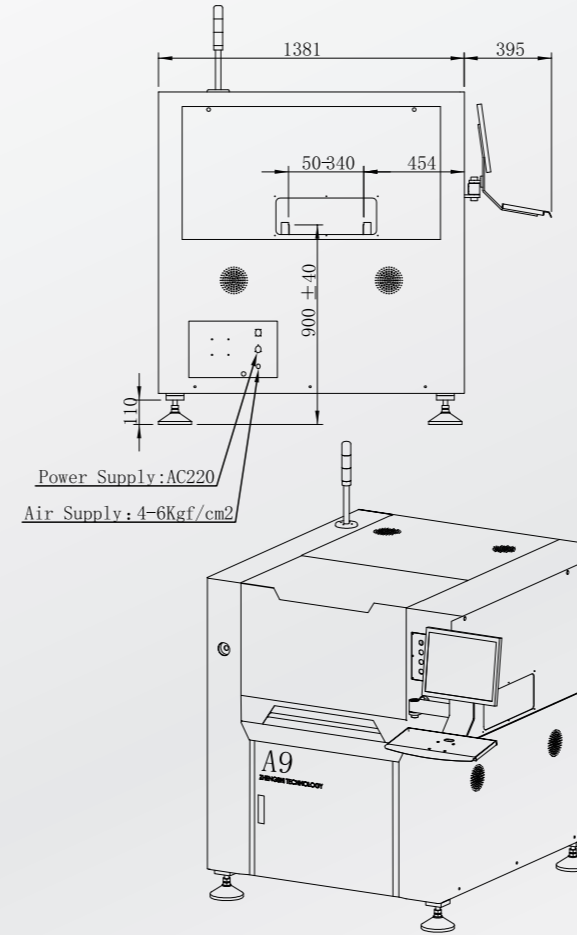
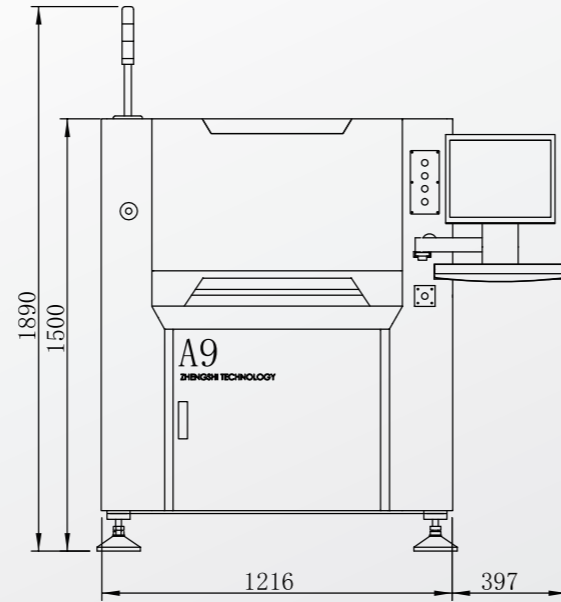
QUALITY FIRST

Customer Foremost, Continuous Improvement, Excellence



A9

Size appearance figure



Shenzhen Headquarters

Room 1806 ,block 3,Jinyun COFCO, Qianjing 2 Road ,Baoan District, Shenzhen City

0755-83203237

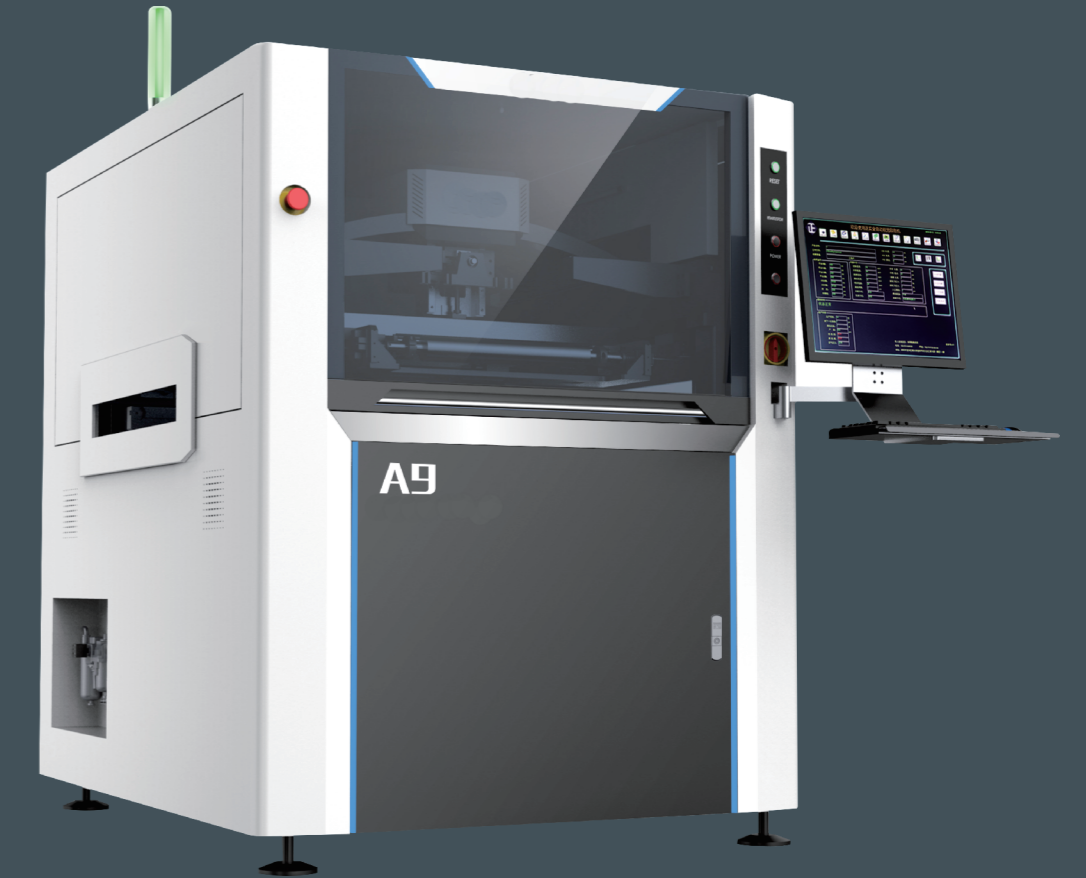
0755-23240492

info@smthelp.com

www.smthelp.com

Fully Automatic Vision Printer

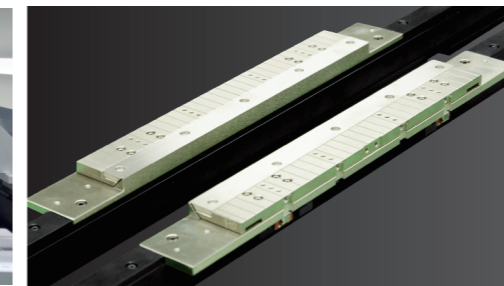
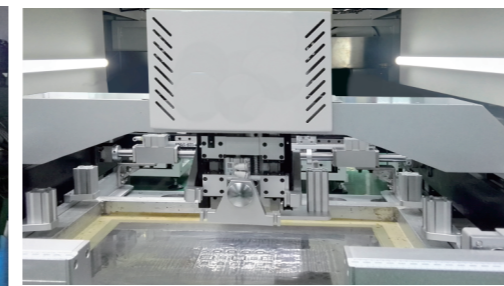
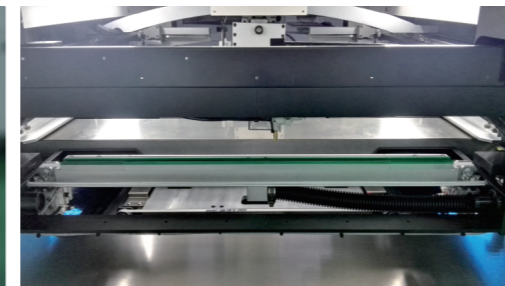
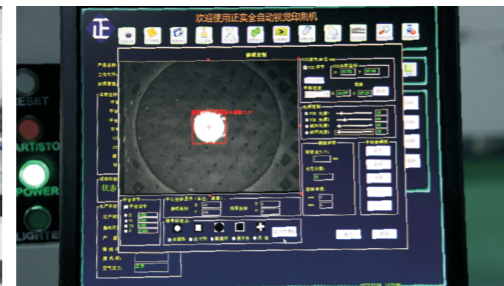
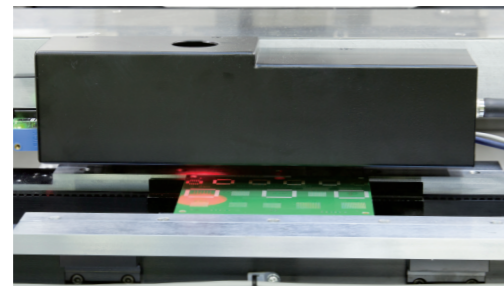
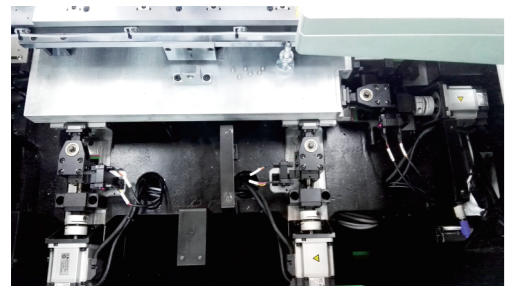
THE LEADING HIGH-END SCREEN PRINTERS IN CHINA



SHENZHEN SOUTHERN MACHINERY SALES AND SERVICE CO.,LTD

A9 Configuration feature

A9 Specifications



Right Special Platform Calibration System

Use the world's most advanced UVW platform,With servo motor and lead screw,compact structure,high reliability,smooth and stable lift up/down platform,platform height automatically adjust by software control.Precisely realize different types of PCB thickness position height adjust.

Image And Optical System

Uniform ring light, high brightness coaxial light and advanced upper/lower vision systemFull range of light compensation, Automatic and accurate recognized of all type MARK points. Applicable for tin plating, copper plating, gold plating, tin spraying,FPC and other types PCB with different colors, able to ensure high accuracy.

Operation Interface

Using Windows XP operation interface,and easy to learn for user, with good man-machine interactive function.Programing is designed with teaching and navigation function, guidance is available on every step.Chinese/English selectable Operating Journal/Breakdown Record/Breakdown Diagnosis

Cleaning System

Stencil cleaning system is automatic and effective. Three options of Dry cleaning, Wet cleaning and Vacuum cleaning can be selected to use, both individually and multiply. And you can also choose to clean manually.The unit to clean is separated from CCD camera, which can minimize the load of motor and impulse, improve the positioning precision and speed and extend the service life.Sprinkler system ensures spraying evenly, from top to bottom.The software function can control the dosage of alcohol and stencil cleaning paper,Effectively save more consumables.Vacuum cleaning is supported with a dedicated fan, powerful and effective.The cleaning system has patents.

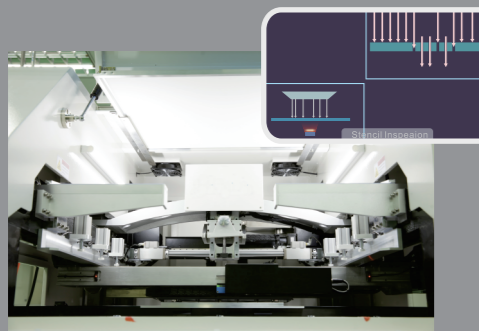
Scraper system

Arch bridge type suspending direct-connected scraper. Print head with the programmable and suspending self-adjusting stepper motor drive. Four wheel positioning slide type with bilateral double sliders ensures the moving accuracy and stability when scraper is running back and forth. Two sets of separate scraper heads are driven respectively by two high precision stepper motors, ensuring the accuracy and stability of the pressure. The closed loop pressure control system can accurately detect and control the squeegee pressure during real-time production.

PCB Transport & Clamping System

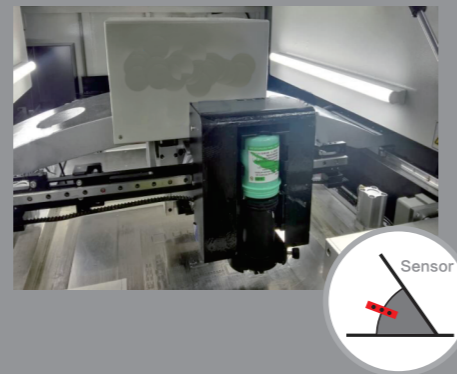
Unique belt transmission system avoids being stuck or fall-off of PCB.Programmable motor controls transport speed and puts PCB in the precise position.Free to choose left or right as the PCB input/output direction.Flexible side clamp and PCB support vacuum block hold PCB tightly and ensure the full even contact between PCB and stencil.

Option function



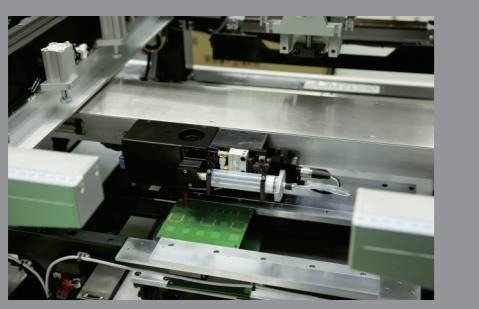
Stencil Inspection System

Through light source compensation at stencil and CCD real time inspection check on stencil holes which can rapidly detect,judge stencil after cleaning whether stencil holes is been block and auto clean,Printing perfect for PCB.



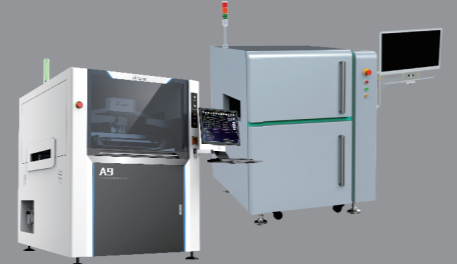
Automatic Add Sloder Paste

Automatic add solder at periodic time and position to ensure quality of solder paste volume at stencil thus guarantee printing quality and efficiency at customer.



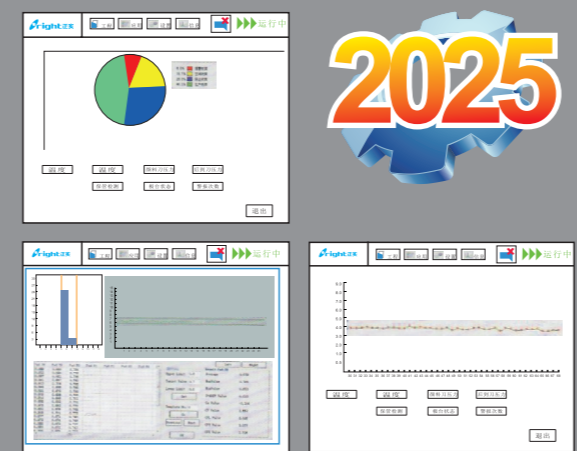
Automatic Dispensing System

In view of the different printing requirement,dispensing through glue,solder paste,dispense line,padding etc can be performed after the printing process,Dispensing head is equip with heating function to maintain glue viscosity with better flowability.



SPI On Line

With SPI close loop connection,when received SPI feedback on poor printing information,machine will automatic adjust per SPI date and correct.XY shifted auto adjust complete by within 3 pcs and clean stencil.This will improve printing quality and production efficiency.It form a complete printing feedback system.



Industry 4.0

Through to the machine status,parameters can be automatically upload or output support customer Industry 4.0 intelligence production much more guarantee.With industry 4.0 it can seamless connection and realized with customer MES system,product traceability,intelligence control machine maintenance.

Item	Model	A9	IMAGE RECOGNITION	
Screen Frames	Min Size	470X370mm	CCD FOV	10x8 mm
	Max Size	737X737mm	Fiducial Types	<input type="checkbox"/> square <input type="checkbox"/> round <input type="checkbox"/> triangle, <input type="checkbox"/> cross Pad Hole
	Thickness	25~40mm	Automatic Camera System	CCD digital camera Geometypattern match Lookupdown optics structure
PCB Min Size	50X50mm		Working environment temperature	-21~℃ ~+50℃
PCB Max Size	510X340mm (530 X340)		Humidity of working environment	30%~60%
PCB Thickness	0.4~6mm		Power Input	AC:220 ± 10%,50/60HZ 1Φ 3KW
PCB Warpage	< 1%		Control Method	PC Control
Transport Height	900 ± 40mm		Machine Dimensions	1216(L)X1381(W)X1500(H)mm
Transport Direction	Left-Right;Right-Left;Left-Left;Right-Right		Machine Weight	Approx:1000Kg
Transport Speed	Max 1500mm/S Programmable		PRINTING PARAMETERS	
Board Location PCB的定位	Support System	Magnetic Pin/Up-down table adjusted/supportblock by hand	PCB Max Size	510X340mm (530 X340)
	Clamping System	side clamping,vacuum nozzle	Squeegee Type	Stainless steel(Standard), plastic
Print head	Two independent motorised printheads		Substrate Separation	0.1~20mm/sec
Cleaning System	Dry、Wet、Vacuum (Programmable)		Separation option	Separation after squeegee up;Squeegee up after separation; Separation bykeeping squeegee on the stencil (Area Separation,Line Separation)
Table Adjustment ranges	X: ± 10mm;Y: ± 10mm;θ: ± 2°		Squeegee Speed	6~200mm/sec
2D Solder Paste Inspection	Standard Configuration		Squeegee Pressure	0~15Kg
			Squeegee Angle	60° /55° /45°
			Repeat Position Accuracy	± 0.007mm(CPK≥2.0)
			Printing Accuracy	± 0.015mm (CPK>2.0 Can printed 03015)
			Cycle Time	<7s (Exclude Printing & Cleaning)
			Product Changeover	<5Min
			Air Required	4.5~6Kg/cm2

