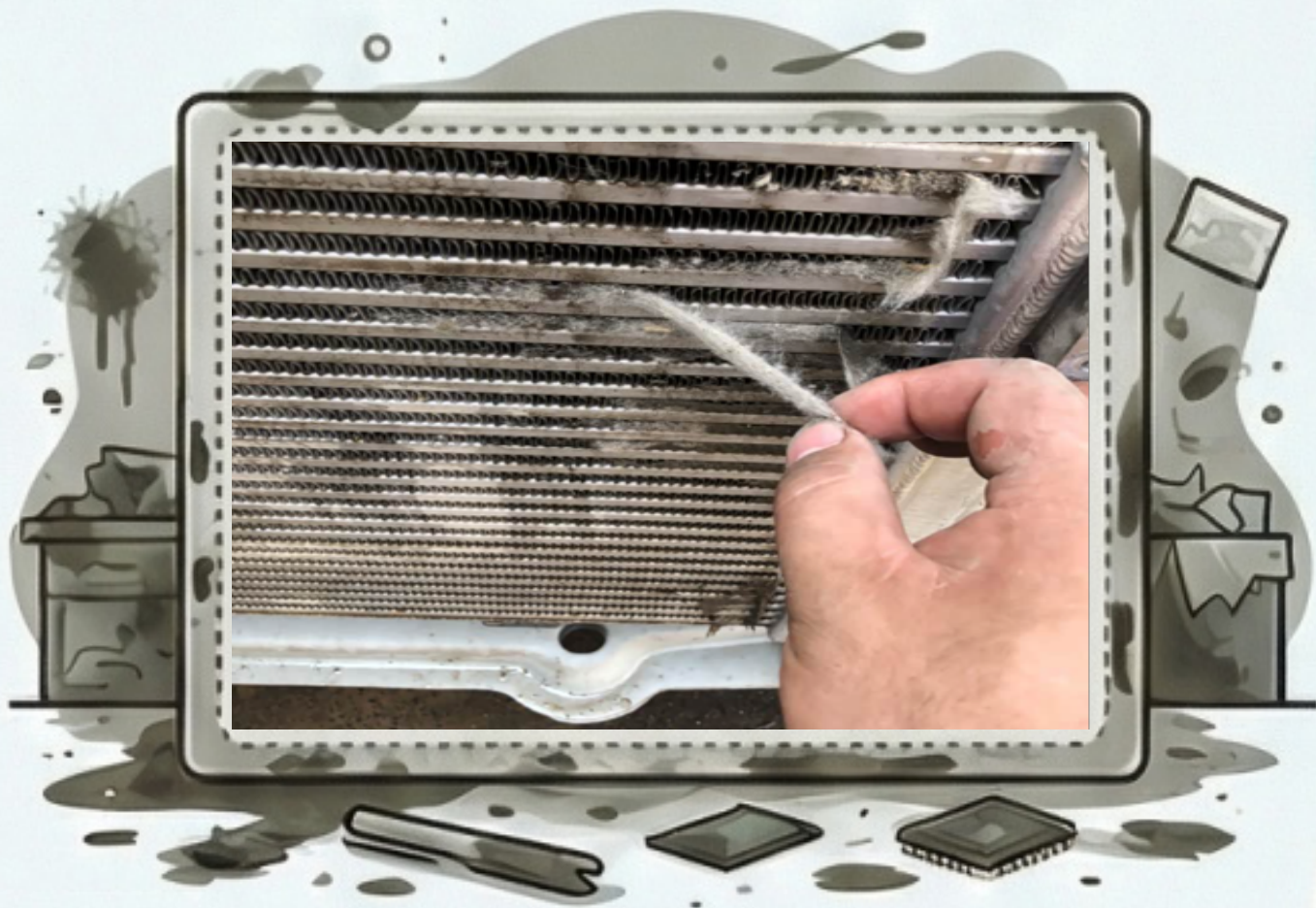


# SME-5500: The Automated Solution for SMT Fixture Cleaning

## THE PROBLEM: Hidden Costs of Manual Cleaning



**High Labor Costs:** Manual cleaning is a repetitive, monotonous, and time-consuming task for operators.



**Inconsistent Quality:** Cleaning results vary between operators, making standardization impossible to achieve.

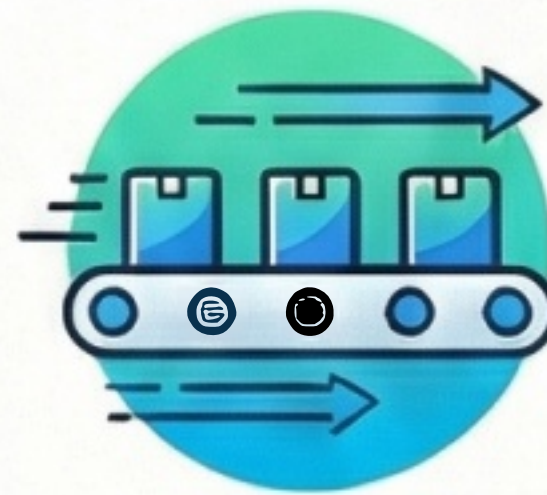


**Fixture Damage & Wear:** Harsh scrubbing causes scratches and shortens the lifespan of expensive fixtures.



**Production Bottlenecks:** Slow manual maintenance cannot keep up with the demands of the production line.

## THE SOLUTION: The SME-5500 Automated Cleaning System



**High-Throughput Batch Processing:** Cleans 20-40 fixtures in a single, fully automated 30-40 minute cycle.

[Insert the diagram from the source showing the "Rotating Basket Mechanism" and "Spray-in-Air Technology".]

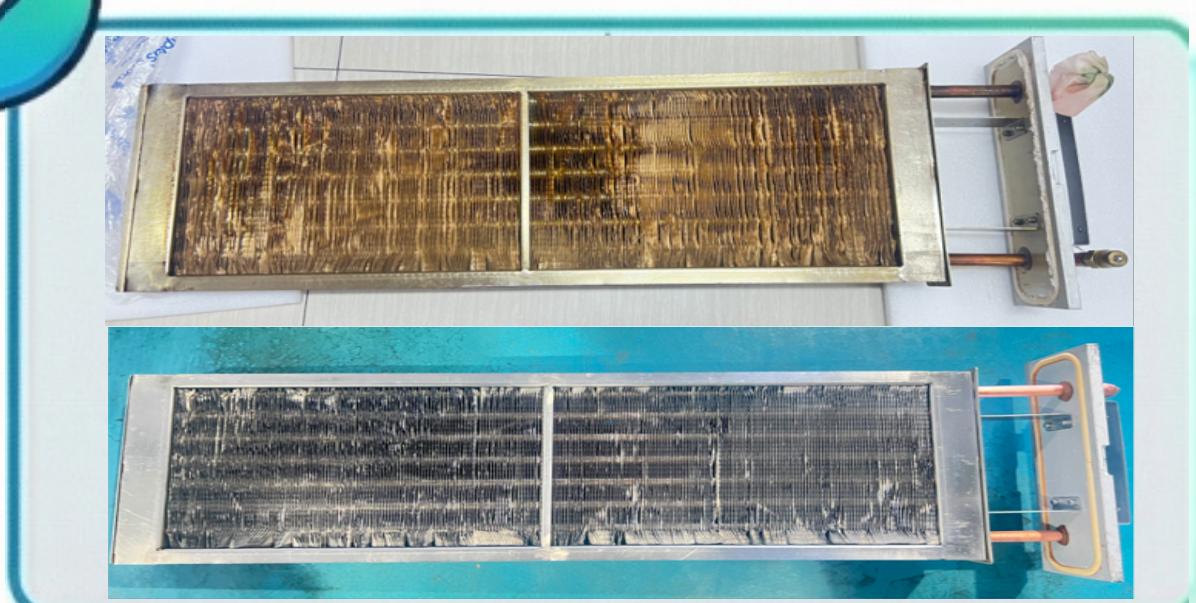
**360° Coverage Technology:** A rotating basket and multi-directional spray jets ensure zero blind spots.

[Insert the diagram from the source showing the 3-stage filtration loop (Grade 1, 2, 3).]

**3-Stage Closed-Loop Filtration:** Recycles cleaning liquid and rinse water, reducing costs and environmental impact.



## BENEFIT



**Achieve Perfect, Repeatable Results:** PLC automation eliminates human variables for guaranteed cleaning consistency.

## KEY TECHNICAL SPECIFICATIONS

Key Specification	Value
Cleaning Basket Diameter	Ø1450 mm
Total Cycle Time	30-40 minutes (Wash + Rinse + Dry)
Applications	Wave Soldering Pallets, Reflow Oven Coolers, SMT Fixtures
Construction	Full SUS304 Stainless Steel Body