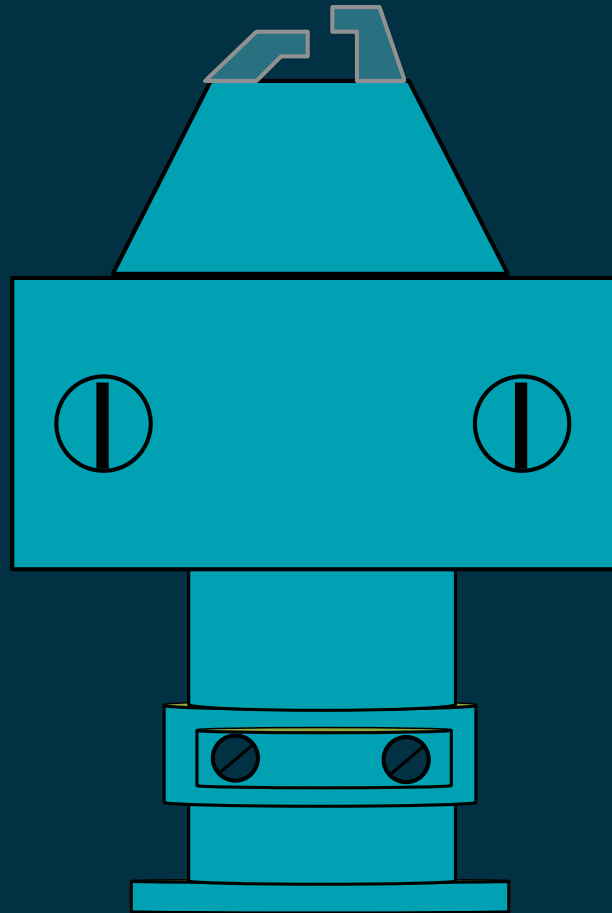
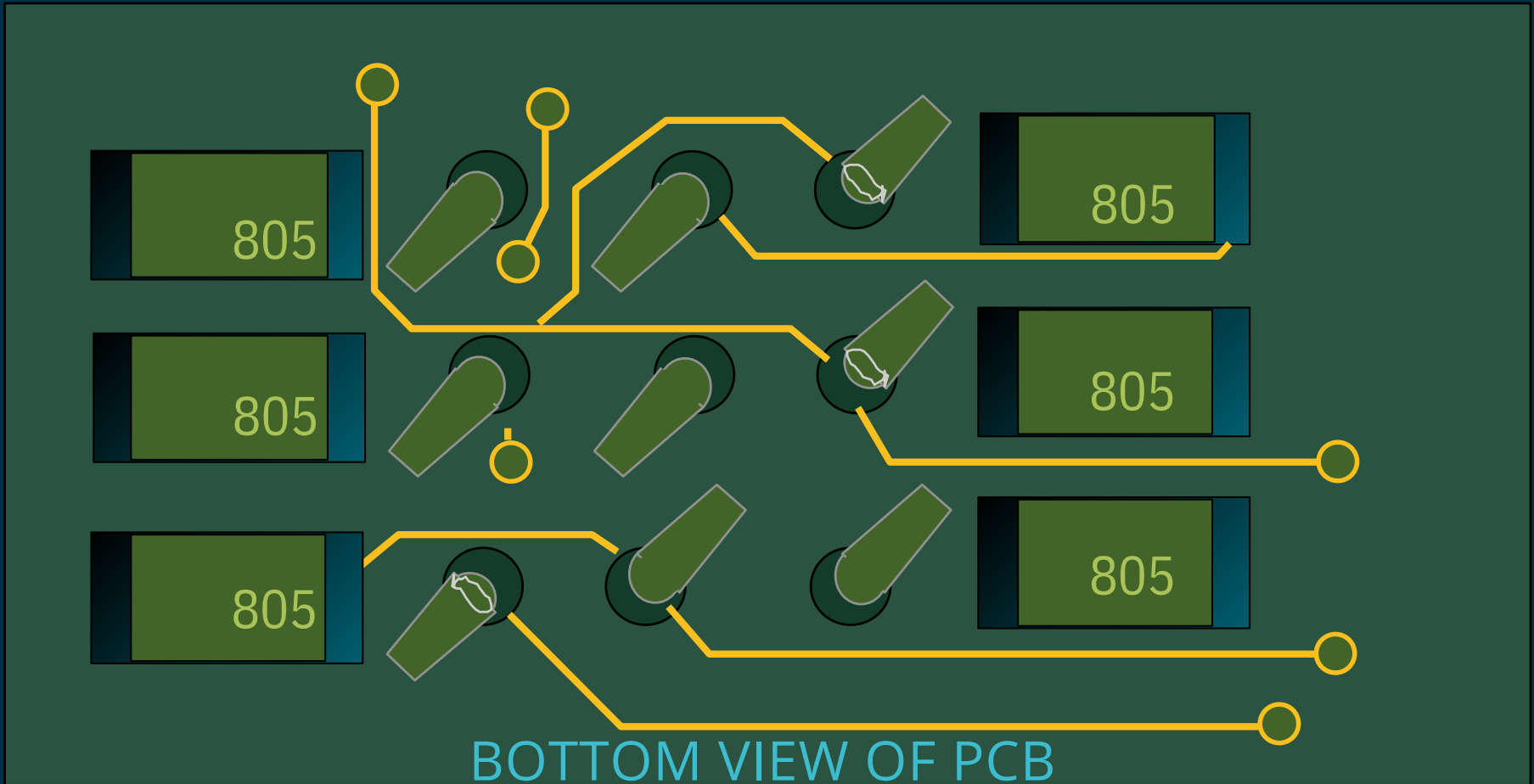


# Radial Insertion Machine Clinch Styles



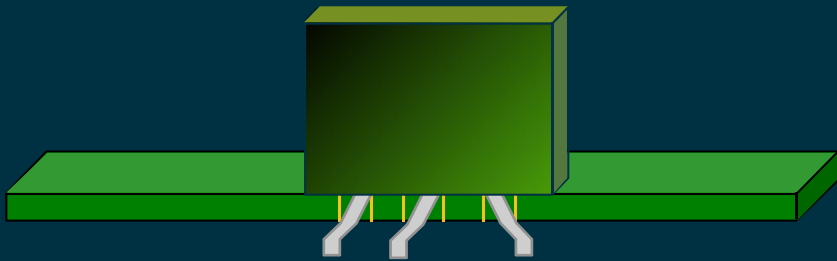
# Why use the N clinch?

- High density
- Short lead length
- No adjustments required
- Handles 2.5mm and 5mm lead spans

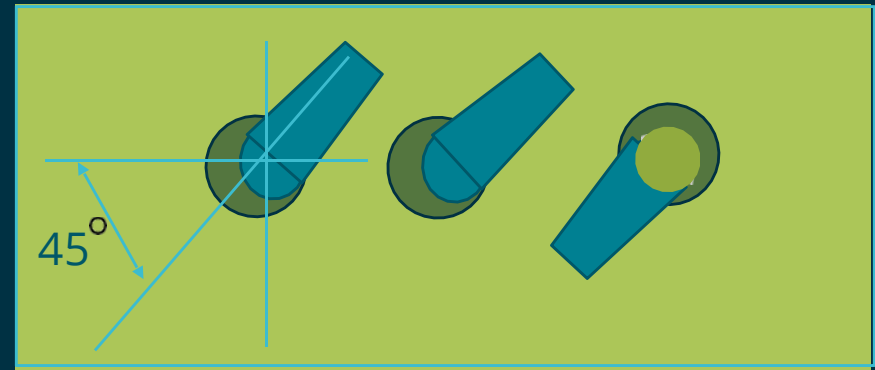
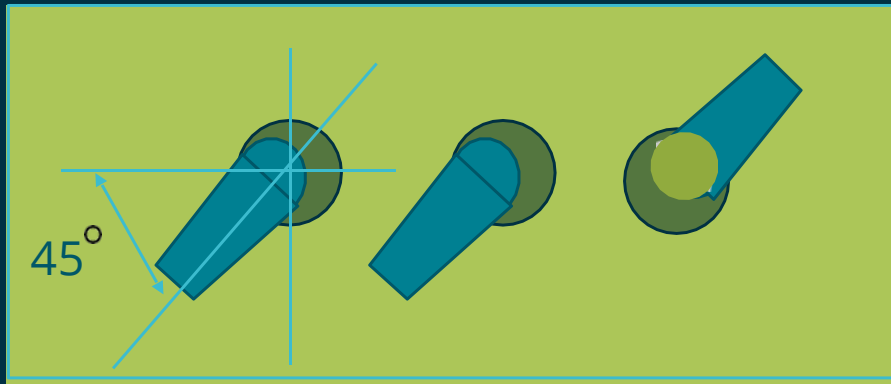
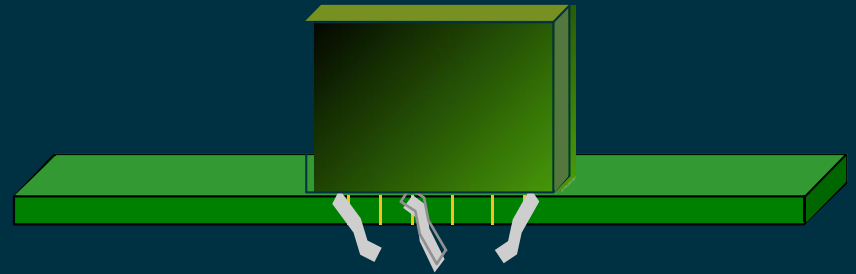


# What is Outward/Inward

N-type Outward Clinch

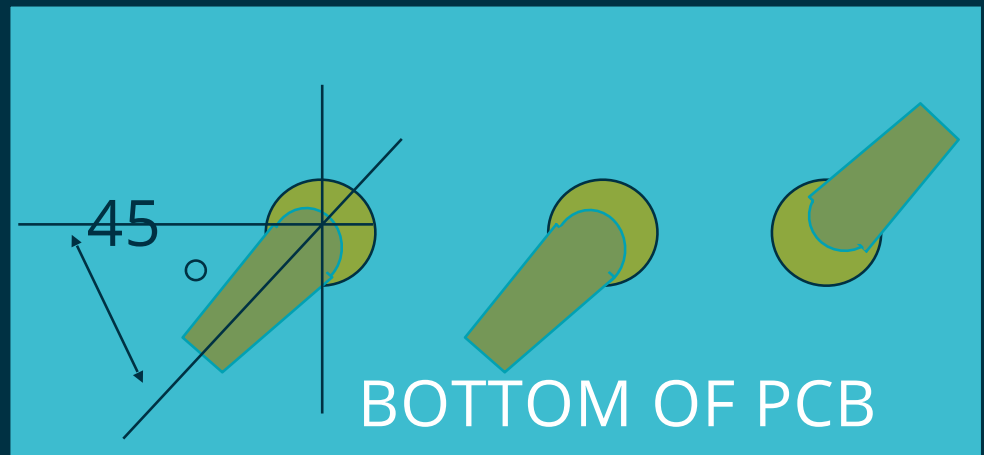
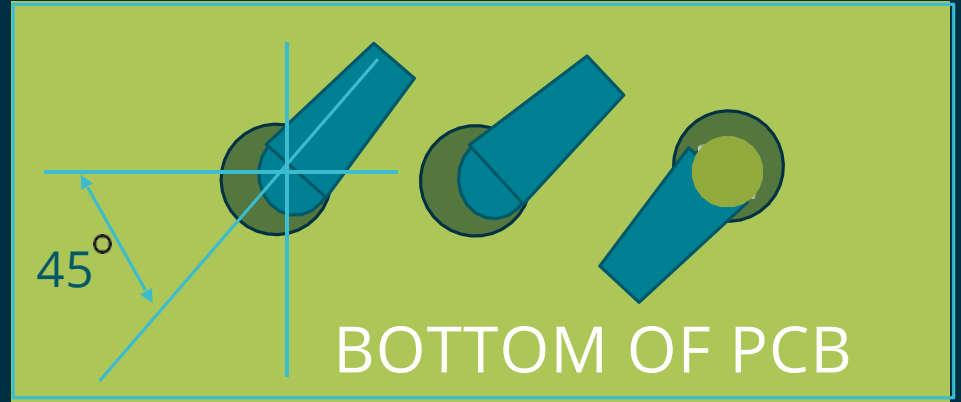


N-type Inward Clinch

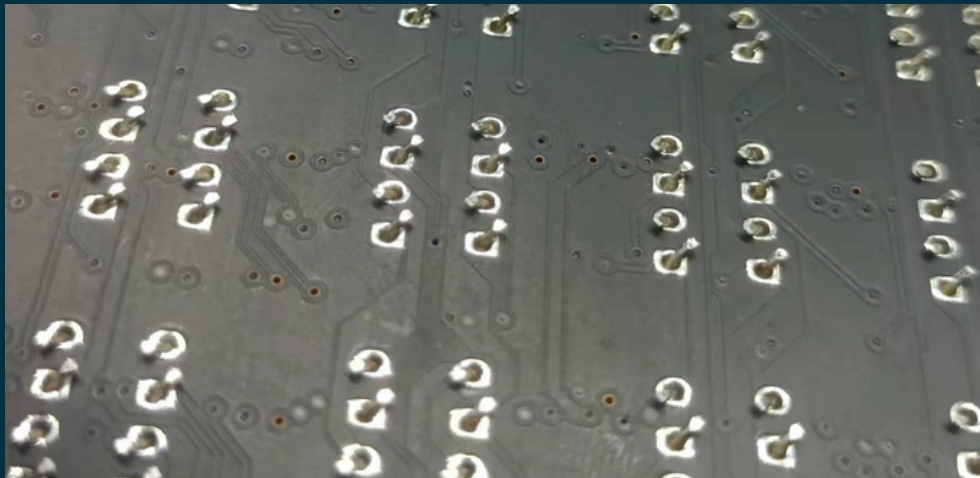
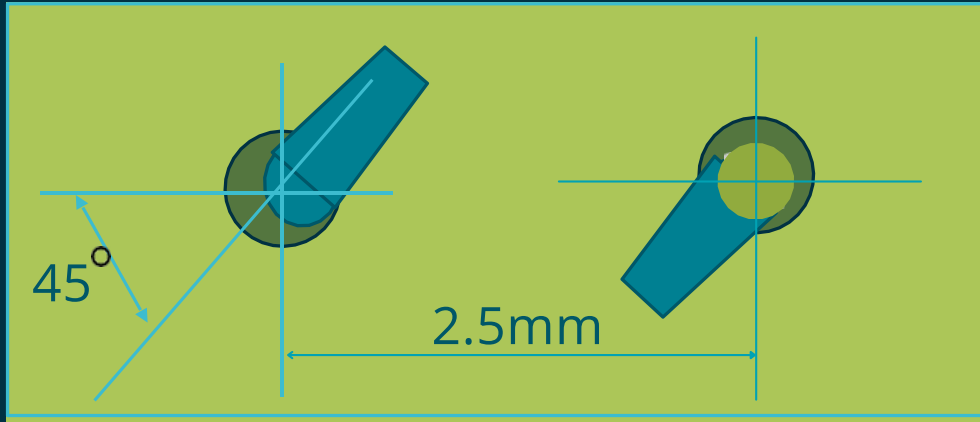


Bottom of PCB

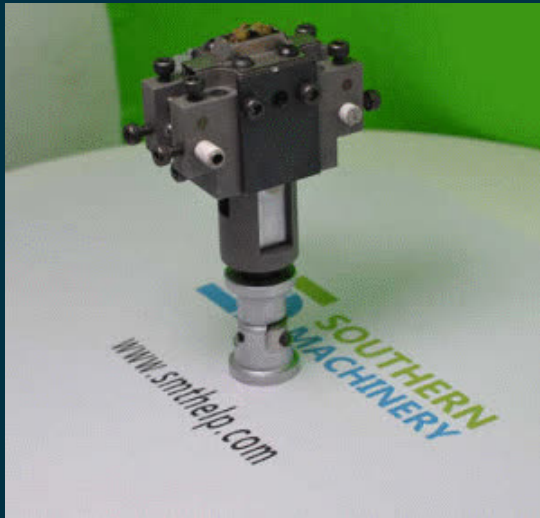
# Lead Length and Angle



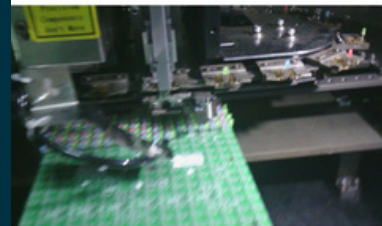
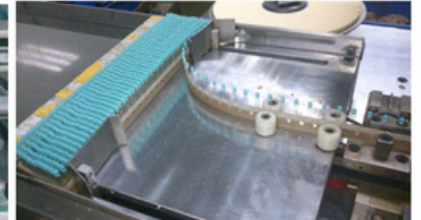
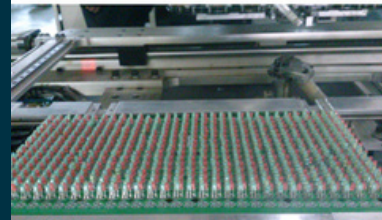
# LED 2.5 lead span Inward solution



# LED 2.5 lead span Inward solution



**SOUTHERN  
MACHINERY** LED P10 Display Panel Assembling



[www.smthelp.com](http://www.smthelp.com)