

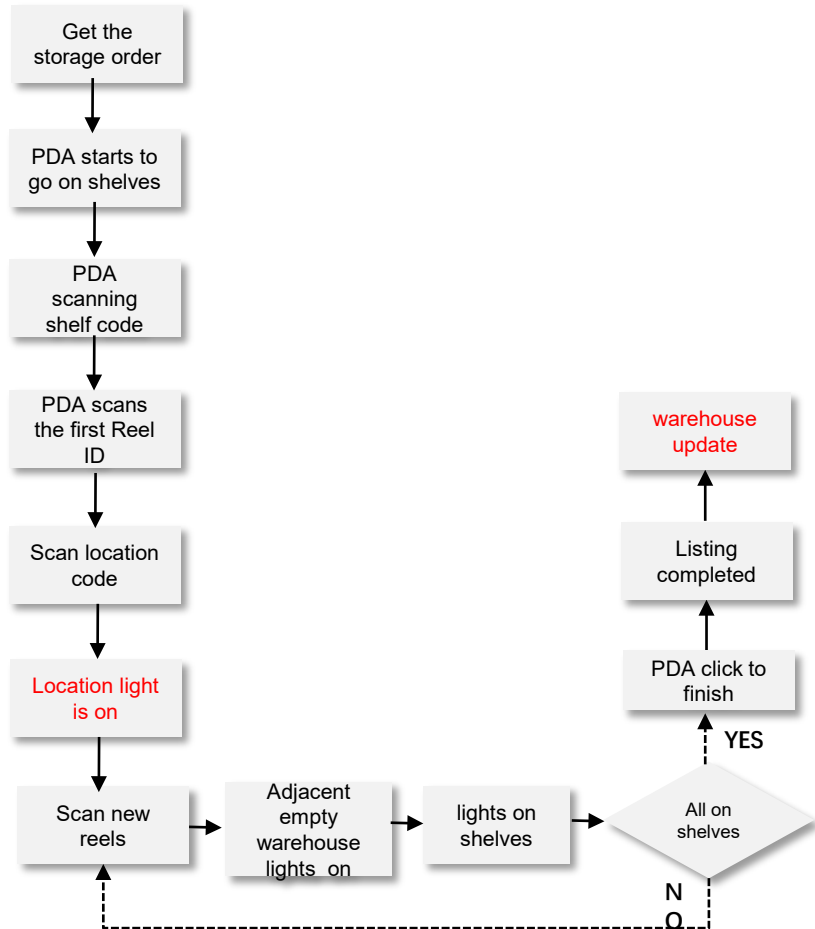
Feature

- Eye-catching indicator light, quickly find the storage location
- Convenient operation, PDA scanning can record the position
- Simple management, provide wired and wireless connection, fast connect with MES/ERP
- Durable, corrosion resistant material

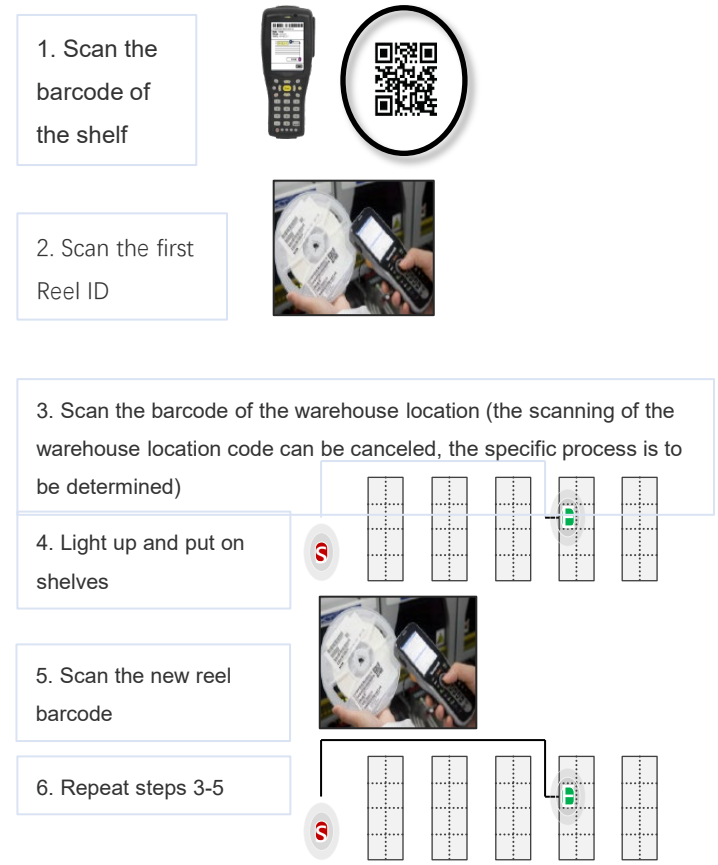


| | |
|-----------------------------------|---|
| Size | Max 2500*1500*800MM (Depends on Stencil Size) |
| Weight | About 150KG |
| Layers Storage Numbers | 2 Layers(Max 3) Available 50 stencils/ Layer |
| Power | 100W |
| Spacing | Available from 25-50MM Thickness Stencil |
| Connection Method | Wi-Fi/ Internet port |
| Function | Smart LED light with QR code each slot |
| Optional configuration | Top Running Indicator light Casters/ Foot cups |

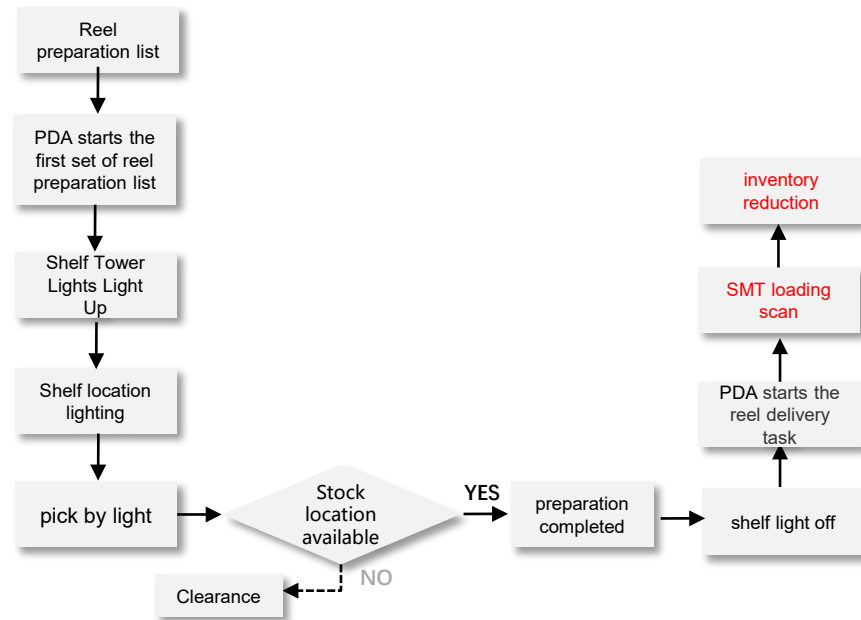
Reels preparation flow chart



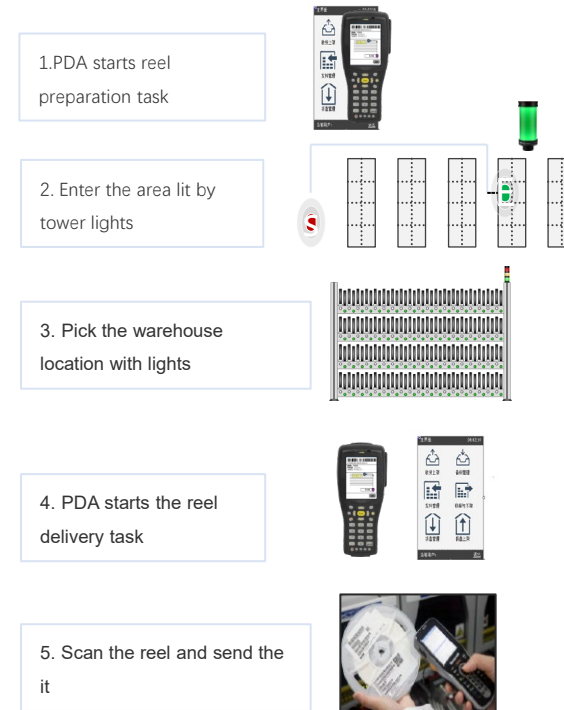
Reels preparation schematic diagram



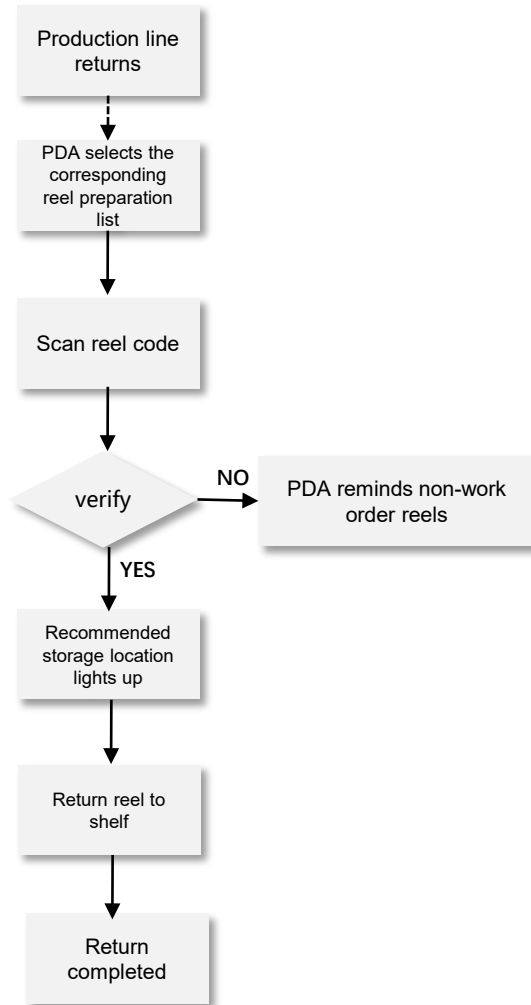
Reel delivery flow chart



Reel delivery schematic diagram



Material returned flow chart



Material returned schematic diagram

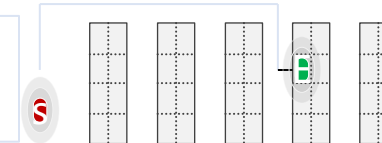
1. Start the return task



2. Scan the reel barcode



3. According to the light on the shelves



4. Return completed

SIR7000B Smart Stencil Storage Benefits

| Storage | | | | | |
|---------|-----------------------------|---------|----------|--------|---|
| Num | Project | Current | Improved | Result | Remark |
| 1 | Training | 90days | 2days | 97% | 97% reduction in personnel training days |
| 2 | Skill Requirements | Yes | No | 100% | No personnel skill requirements, reduced by 100% |
| 3 | Impact of personnel changes | Yes | No | 100% | The flow of personnel has no impact on the warehouse work |
| 4 | 100 discs time-consuming | 50mins | 16mins | 300% | Efficiency increased by 300% |
| 5 | Employees | 8 | 3 | 63% | Reduce personnel by 63% |

Best After-sales service

- **7x24 Worldwide Support**
- **Free Installation/ Training**
- **1 day lead-time (spare parts)**
- **1 Month customize solution**



Welcome Inquiry

Please visit www.smthelp.com

Find us more <https://www.facebook.com/autoinsertion>

Know more our team <https://cn.linkedin.com/in/smtsupplier>

Welcome to our factory in Shenzhen China

See more machine working video, please Youtube [Auto Insertion](#)

Google [Auto+insertion](#), to get more information

Looking forward to your email info@smthelp.com