

Blister packaging

Material		PVC, PP, PS, PE, HIPS and so on
Mold type	Gypsum mold	The surface is not smooth and fragile, not durable. It is often used for design proofing.
	Copper mold	The surface smooth and durable, low cost advantages, electroplating copper is the most commonly used mold.
	Aluminum mold	CNC machined Aluminum mold. It is the perfect precision, smooth and durable, but also high cost. Aluminum mold is for high precision demand products, or for mass production.
Used for electric components, food, hardware, toy and so on.		

Sample Products:



PP CORRUGATED SHEET

PP CORRUGATED SHEET

SHEET THICKNESS: 2mm, 3mm, 4mm, 5mm

COLOR: Black, grey, green, blue, white, red
only black color can be conductive.

SURFACE RESISTANCE:

Anti-static: 10E6-10E11 ohm

Conductive: 10E4-10E6 ohm

ADVANTAGE: Any size can be ordered.

We could customize any design as request.



PP Corrugated Sheet



Corrugated Divider

FLEXIBLE, ECONOMIC



**LN3301 Conductive
Corrugated Box**



**LN3302 ESD
Corrugated Box**



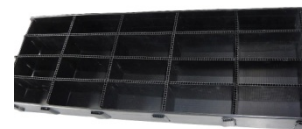
**LN3303A Normal
Corrugated Box**



**LN3303B Normal
Corrugated Box**



**Corrugated Box
with cover**



**Conductive
Corrugated Divider**



**Conductive
Plastic Corner**



Plastic Side Frame



Metal Handle

ESD CONTAINER, TRAY

ESD CONTAINER, TRAY

DESCRIPTION:

- 1) Molding Injection
- 2) Material: PP compound
- 3) Usage: to store electronics components, PCBs, and transportation
- 4) Surface resistance: below 10E6 ohms
- 5) ESD corrugated divider can be matched inside.
- 6) Corrugated cover or molded cover is available to prevent dust.
- 7) It can print LOGO, make stack.

We offer many models to accommodate all your needs.

ESD BIN BOX					
Model	Ext.dim.(mm)	Int.dim.(mm)	Model	Ext.dim.(mm)	Int.dim.(mm)
SM-2101	155×100×55	135×85×50	SM-2103	255×175×75	220×160×70
SM-2102	205×135×65	180×120×60	SM-2104	300×205×90	270×185×80
ESD TOTE BOX					
Model	Ext.dim.(mm)	Int.dim.(mm)	Model	Ext.dim.(mm)	Int.dim.(mm)
SM-2105	360×270×135	320×240×125	SM-2125	600×500×167	560×460×160
SM-2106	380×240×105	340×220×90	*SM-2127	580×370×200	535×344×193
SM-2107	420×310×155	380×280×145	*SM-2128	580×370×160	535×344×152
*SM-2109	500×360×175	440×330×165	*SM-2129	615×425×155	585×390×145
*SM-2110	565×420×240	510×390×235	*SM-2130	628×425×320	580×385×310
*SM-2111	565×420×300	510×390×290	SM-2131	720×450×180	680×420×175
*SM-2112	600×500×150	560×455×140	SM-2132	720×560×380	675×515×370
*SM-2113	600×500×300	560×455×290	SM-2136	560×430×145	515×350×140
*SM-2114	610×500×360	560×460×355	SM-2137	585×405×175	538×360×170
SM-2115	670×410×160	620×370×150	SM-2138	530×370×205	490×330×200
*SM-2116	565×420×380	510×390×375	*SM-2139	620×430×200	580×385×195
*SM-2119	610×500×400	560×455×395	*SM-2149	620×430×250	580×395×243
*SM-2120	610×415×245	580×380×240	SM-2150	510×345×185	464×300×175

CONDUCTIVE TRAY					
Model	Ext.dim.(mm)	Int.dim.(mm)	Model	Ext.dim.(mm)	Int.dim.(mm)
SM-2108	450×300×60	430×280×50	SM-2126	315×230×43	300×215×37
SM-2108A	450×300×45	430×280×38	SM-2133	480×328×42	445×292×35
SM-2118	440×290×50	400×265×45	SM-2135	615×420×95	570×370×90
SM-2121	375×250×65	345×225×60	SM-2140	226×166×29	214×154×25
SM-2122	440×295×80	410×265×75	SM-2141	289×195×26	274×183×23
SM-2123	560×375×75	525×330×70	SM-2142	315×290×29	136×58×20

Cover (Lid)	
Model	Size(mm)
SM-2168	610×505×15
SM-2169	566×427×15
SM-2170	585×375×30
SM-2171	630×437×16
SM-2172	484×357×14



SM-2127 ESD Tote Box



ESD Bin Box



SM-2114 ESD Tote Box



SM-2136 ESD Tote Box



SM-2113 ESD Tote Box

Notes: * cover is available.

ESD Circulation Box

Model	Ext.dim.(mm)	Int.dim.(mm)	Model	Ext.dim.(mm)	Int.dim.(mm)
SM-6409	600x400x90	563x365x80	SM-6422	600x400x230	563x365x220
SM-6411	600x400x110	563x365x105	SM-6425	600x400x255	563x365x235
SM-6413	600x400x135	563x365x125	SM-6429	600x400x290	563x365x280
SM-6415	600x400x150	563x365x135	SM-6433	600x400x330	563x365x320
SM-6417	600x400x175	563x365x160	-	-	-



SM-6422

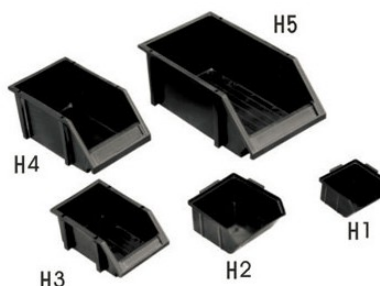
Notes: cover is available

ESD Component Box

Model	Contour Size	Inner Size	Type
No.1	95x105x50mm	80x95x40mm	Hanging-style
No.2	130x125x65mm	110x105x55mm	Hanging-style
No.3	165x95x70mm	148x86x60mm	Hanging-style
No.4	175x105x80mm	158x95x70mm	Hanging-style
No.5	200x130x90mm	180x113x80mm	Hanging-style
No.6	233x159x120mm	215x140x112mm	Hanging-style



Model	Box Size
H1	104x104x49mm
H2	140x122x68mm
H3	180x121x79mm
H4	253x155x125mm
H5	352x201x143mm



Group of Vertical Detail Cells

Model	Ext.dim.(mm)	Int.dim.(mm)	Cant Height (mm)	Support Height (mm)	wgt. (kg)	Volume (L)	Load /cell(kg)	Stacking Load(kg)	Quantity of Package (cell/box)
A1811	180x110x80	155x85x75	45	35	0.12	0.5	3	30	80
A2515	250x120x125	220x125x120	65	35	0.33	1.7	10	100	40
A3520	350x200x155	305x170x150	80	50	0.65	3.9	15	150	20
A4520	450x200x180	405x165x170	100	50	0.96	6.4	20	200	12
A4530	450x300x180	405x270x170	100	50	1.18	9.8	25	250	8

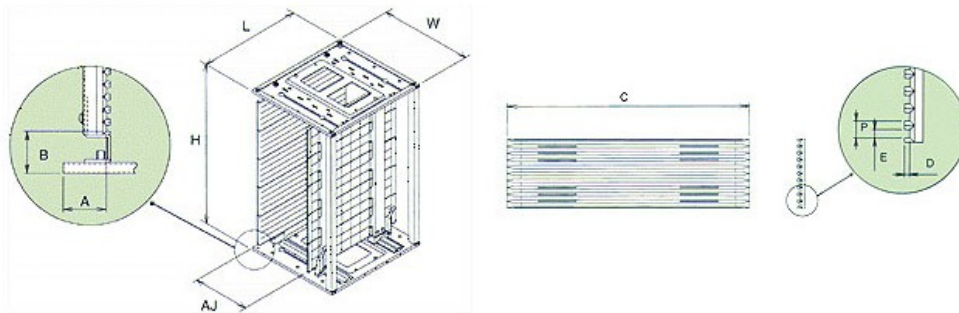


Group of Vertical Detail Cells

SMT PCB MAGAZINE RACK

SMT PCB MAGAZINE RACK

- Smooth-Width adjustment using our patented rack & pinion system.
- ESD Safe plastic card guides, 50 slots.
- Heat-resistant card guides for board temperature up to 200°C.
- Compatible with all brands of equipment.



Model No.	#1 Base	#2 AJ Method	#3 Temp.	Outer Dimension				Card Guide				Ref.		PCB Slots	Weight(kg)
				L	W	H	AJ	C	D	E	P	A	B		
SM-A801	P	Screw Adjust.	80°C	355	315	580	50-250	353	3.2	7	10	34	34	50	5
SM-A802	P	Screw Adjust.	80°C	355	315	305	50-250	353	3.2	7	10	34	34	25	3.4
SM-B803	M	Screw/Gear	80°C	355	320	563	50-255	353	3.0	5	10	34	34	50	6
SM-B803HT	M	Screw/Gear	120°C	355	320	563	50-255	353	3.0	5	10	34	34	50	6
SM-B083HT200	M	Screw/Gear	200°C	355	320	563	50-255	353	3.0	5	10	34	34	50	6
SM-B804	P	Screw/Gear	80°C	355	320	563	50-255	353	3.0	5	10	34	34	50	4.5
SM-B804HT	P	Screw/Gear	120°C	355	320	563	50-255	353	3.0	5	10	34	34	50	4.5
SM-B805	M	Screw/Gear	80°C	355	320	563	50-255	353	3.0	5	10	34	34	50	7.5
SM-B805HT	M	Screw/Gear	120°C	355	320	563	50-255	353	3.0	5	10	34	34	50	7.5
SM-B806	P	Screw/Gear	80°C	355	320	563	50-255	353	3.0	5	10	34	34	50	6.5
SM-B806HT	P	Screw/Gear	120°C	355	320	563	50-255	353	3.0	5	10	34	34	50	6.5
SM-C807	M	Gear Track	80°C	460	400	565	70-330	460	4.0	5	10	35	35	50	8.8
SM-C807HT	M	Gear Track	120°C	460	400	565	70-330	460	4.0	5	10	35	35	50	8.8
SM-D808	M	Screw/Gear	80°C	535	460	570	50-400	530	4.0	7	10	34	41	50	10.5
SM-D808HT	M	Screw/Gear	120°C	535	460	570	50-400	530	4.0	7	10	34	41	50	10.5
SM-E809	M	Gear Track	80°C	535	530	570	70-460	530	4.0	5	10	34	34	50	12.3
SM-E809HT	M	Gear Track	120°C	535	530	570	70-460	530	4.0	5	10	34	34	50	12.3
SM-B811	P	Chain Track	80°C	355	320	570	50-250	353	4.0	5	10	34	34	50	6

#1: "M" designates "Metal Base". "P" designates "Plastic Base"

#2: "AJ" designates the method of adjusting the width using a screw or with gear adjust system.

SMT PCB MAGAZINE RACK



SM-A801 SMT MAGAZINE RACK

Surface Resistance: $10^4 - 10^6 \Omega$

Contour Size (L×W×H)mm: 355×315×580

51pcs of Plates can be stored

The specification of PCB plates: 350×(80—250)mm

Guide slot of side plate: Depth 3mm, Width 7mm, Pitch 10mm

Top and bottom Base is plastic base.

Fix method: screw adjustable

Weight: 5.0KG

SM-A802

355x315x305mm size magazine rack is available



SM-B803 SMT MAGAZINE RACK

Surface Resistance: $10^4 - 10^6 \Omega$

Contour Size(L×W×H)mm: 355×320×565

50pcs of Plates can be stored

The specification of PCB plates: 350×(50—250)mm

Guide slot of side plate: Depth 3mm, Width 5mm, Pitch 10mm

Top and bottom Base is metal base.

Fix method: handle adjustable

Side plate: five pieces assembled

Weight: 6.0KG



SM-B804 SMT MAGAZINE RACK

Surface Resistance: $10^4 - 10^6 \Omega$

Contour Size(L×W×H)mm: 355×320×565

50pcs of Plates can be stored

The specification of PCB plates: 350×(50—250)mm

Guide slot of side plate: Depth 3mm, Width 5mm, Pitch 10mm

Top and bottom Base is plastic base.

Fix method: handle adjustable

Side plate: five pieces assembled

Weight: 4.5KG

SMT PCB MAGAZINE RACK



SM-B805 SMT MAGAZINE RACK

Surface Resistance: $10^4 - 10^6 \Omega$

Contour Size(L×W×H)mm: 355×320×565

50pcs of Plates can be stored

The specification of PCB plates: 350×(50—250)mm

Guide slot of side plate: Depth 3mm, Width 5mm, Pitch 10mm

Top and bottom Base is metal base.

Fix method: handle adjustable

Side plate: whole plates

Weight: 7.5KG



SM-B806 SMT MAGAZINE RACK

Surface Resistance: $10^4 - 10^6 \Omega$

Contour Size(L×W×H)mm: 355×320×565

50pcs of Plates can be stored

The specification of PCB plates: 350×(50—250)mm

Guide slot of side plate: Depth 3mm, Width 5mm, Pitch 10mm

Top and bottom Base is plastic base.

Fix method: handle adjustable

Side plate: whole plates

Weight: 6.5KG



SM-C807 SMT MAGAZINE RACK

Surface Resistance: $10^4 - 10^6 \Omega$

Contour Size(L×W×H)mm: 460×400×565

50pcs of Plates can be stored

The specification of PCB plates: 460×(50—330)mm

Guide slot of side plate: Depth 3mm, Width 5mm, Pitch 10mm

Top and bottom Base is metal base.

Fix method: handle adjustable

Side plate: five pieces assembled

Weight: 8.8KG

SMT PCB MAGAZINE RACK



SM-D808 SMT MAGAZINE RACK

Surface Resistance: $10^4 - 10^6 \Omega$

Contour Size(L×W×H)mm: 535×460×570

50pcs of Plates can be stored

The specification of PCB plates: 460×(50—380)mm

Guide slot of side plate: Depth 3mm, Width 7mm, Pitch 10mm

Top and bottom Base is metal base.

Fix method: handle adjustable

Side plate: five/two pieces assembled

Weight: 10.5KG



SM-E809 SMT MAGAZINE RACK

Surface Resistance: $10^4 - 10^6 \Omega$

Contour Size(L×W×H)mm: 535×530×570

50pcs of Plates can be stored

The specification of PCB plates: 530×(50—460)mm

Guide slot of side plate: Depth 3mm, Width 5mm, Pitch 10mm

Top and bottom Base is metal base.

Fix method: handle adjustable

Side plate: five pieces assembled

Weight: 12.3KG



SM-B811 SMT MAGAZINE RACK

Surface Resistance: $10^4 - 10^6 \Omega$

Contour Size(L×W×H)mm: 355×320×570

50pcs of Plates can be stored

The specification of PCB plates: 350×(50—250)mm

Guide slot of side plate: Depth 3mm, Width 5mm, Pitch 10mm

Top and bottom Base is plastic base.

Fix method: chain adjustable (Four chains can be conveyed at the same time ,It is accurate and efficient to adjust. close conveniently and freely)

Side plate: whole plate

Weight: 5.6KG



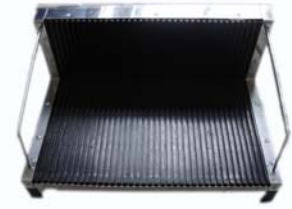
SM-C03 Conductive Component Box

Surface Resistance: $10^5-10^8 \Omega$
 Contour Size: 138x93x46mm
 Interior Size: 127x87x42mm
 Shape: Combination, drawer type



SM-C04 Conductive Insert-rack

Surface Resistance: $10^5-10^8 \Omega$
 Contour Size: 100x15x14mm
 Width: 2.0mm
 Can supply a variety of equipment and products for ESD production line



SM-D01 Anti-static Circulation Rack

Contour Size: (LxWxH)
 410x280x165mm
 Use Slot Size: (LxH) 225x140mm
 It can put 38pcs pcbs.



SM-D02 Anti-static Circulation Rack

Contour Size: (LxWxH)
 480x140x35mm
 25 pcs of PCB plates can be stored
 Shape: Rectangle, Two-sided may use.



SM-D03 Anti-static Circulation Rack

Contour Size: (LxWxH)
 265x205x95mm
 Use Slot Size: (LxH) 155x75mm
 25 pcs of PCB plates can be stored



SM-D04 Anti-static Circulation Rack

Contour Size: (LxWxH)
 410x140x22mm/410x280x22mm
 Slot (WxH) 2.8x5mm Spacing: 10mm
 42 pcs of PCB plates can be stored



SM-D05 Anti-static Circulation Rack

Contour Size: (LxWxH)
 437x160x30mm
 Slot (WxH) 3x7mm Spacing: 16mm
 5 pcs of PCB plates can be stored



SM-D07 Anti-static Circulation Rack

Contour Size: (LxWxH)
 485x175x50mm
 Slot : 3x7mm Slot: 2.2x4mm
 Spacing: 16mm
 25 pcs of PCB plates can be stored



SM-D08 Anti-static Circulation Rack

Contour Size: (LxWxH)
 1200x1000x145mm
 Surface Resistance: $10^8-10^{11} \Omega$
 Material: HDPE/PP
 Active Carrying: 800kgs
 Stable Carrying: 2000kgs