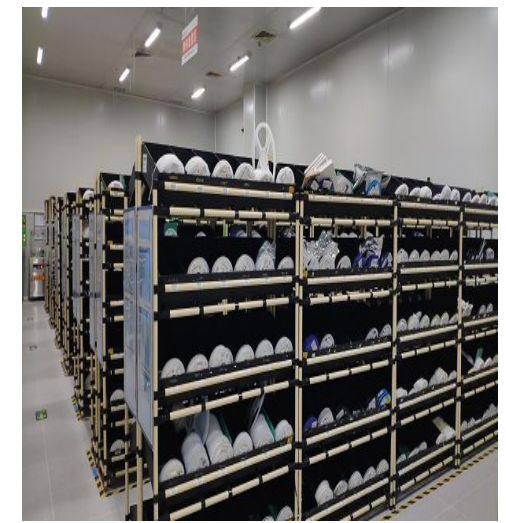
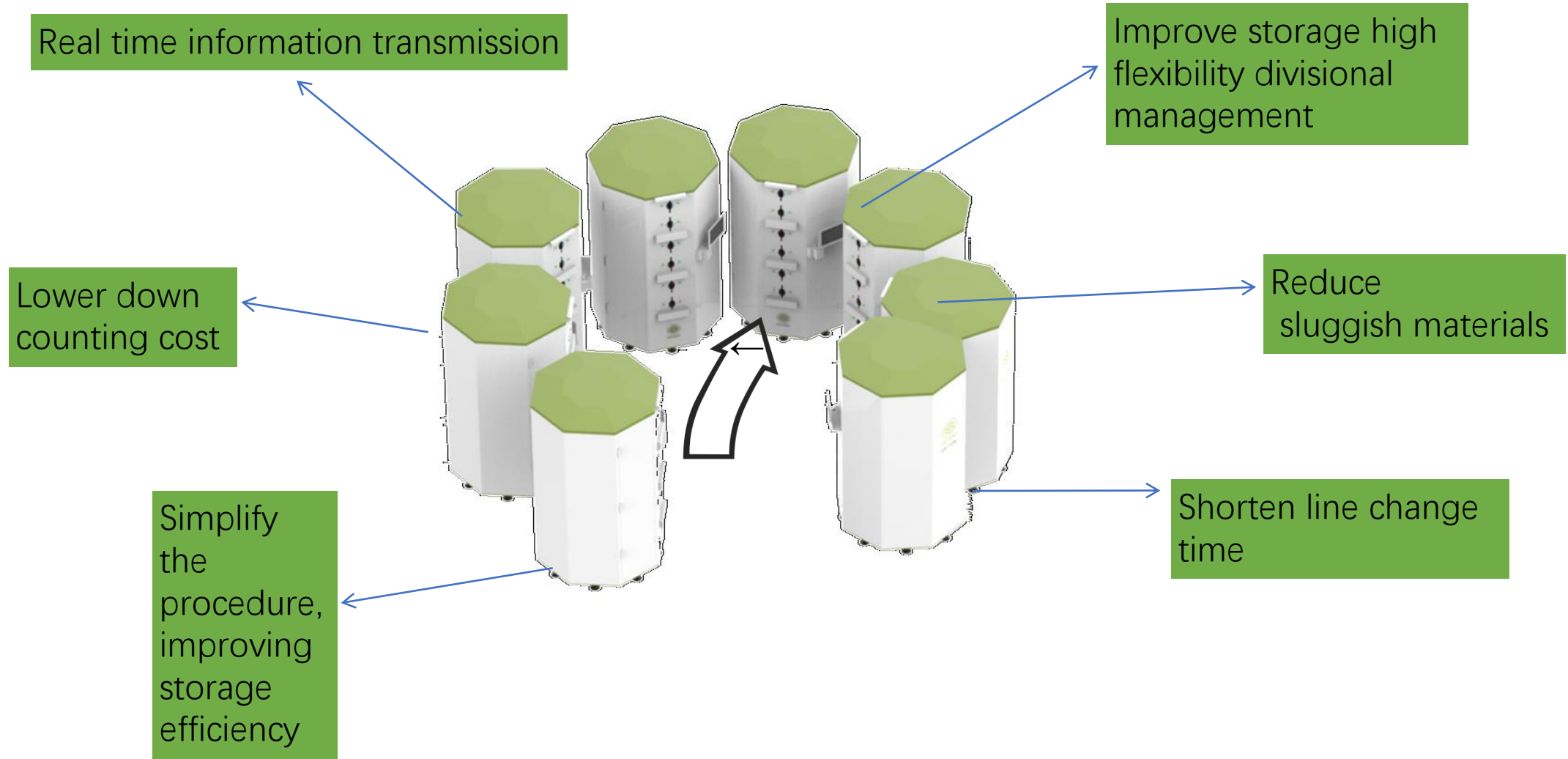


Are you facing the following problems?

1. Difficult to find materials, long time to prepare materials, affecting production
2. Error-prone
3. Difficult round-off work, the statement cycle is long
4. Difficult to implement "first in first out" principle
5. Poor traceability
6. Small batches, multiple models, high frequency of line changes, difficult management
7. Bulk materials are difficult to manage, and the return cycle of materials after offline is long, and bulk materials are not processed in time, resulting in sluggishness
8. Inconsistent accounts, low degree of informatization, and low operational efficiency
9. Inventory is time-consuming, labor-intensive, and costly
10. Employee experience required for management



Smart Reel Storage Silo



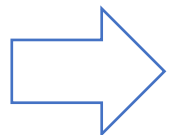
Feature 1:

Fast: Independently rotating in layers

First-ever worldwide

Fastest < 1s/Reel, Average < 3s/Reel

- ① Adopt servo motor for layered drive
- ② 360-degree bidirectional rotation
- ③ Incoming and outgoing materials nearby



Easily meet the needs of multiple work orders to issue materials at the same time.



Feature 2:

Reels find people: High efficiency material taking in and out, saving labor and improving effect

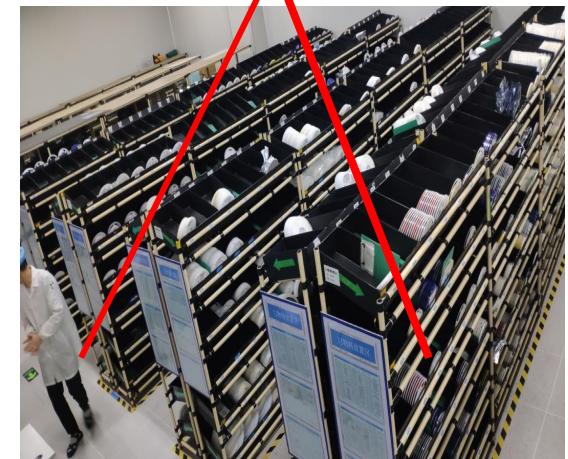


☆ 5 Miles Walking Reduced

☆ 3-5 Times Work Efficiency Improvement

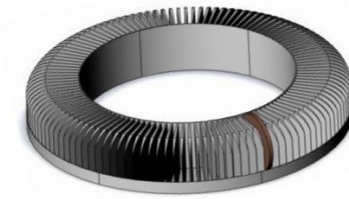
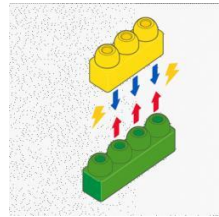
☆ Save labor by 60%

On-line networking, the main silo group to forms an organic whole;
The silo rotates around the operator, easy to get;
efficient access to materials, save people efficiency!



Feature 3:

Lego concept, modular design, high flexibility combination



- ★ Can add layers based on the height
- ★ Multiple silos can be matched freely, adapting the the site, production, and product changes

Feature 4:

Big and small reels matched freely in layers



7 inches reels:
Resistor, capacitor,
inductor CHIP
components

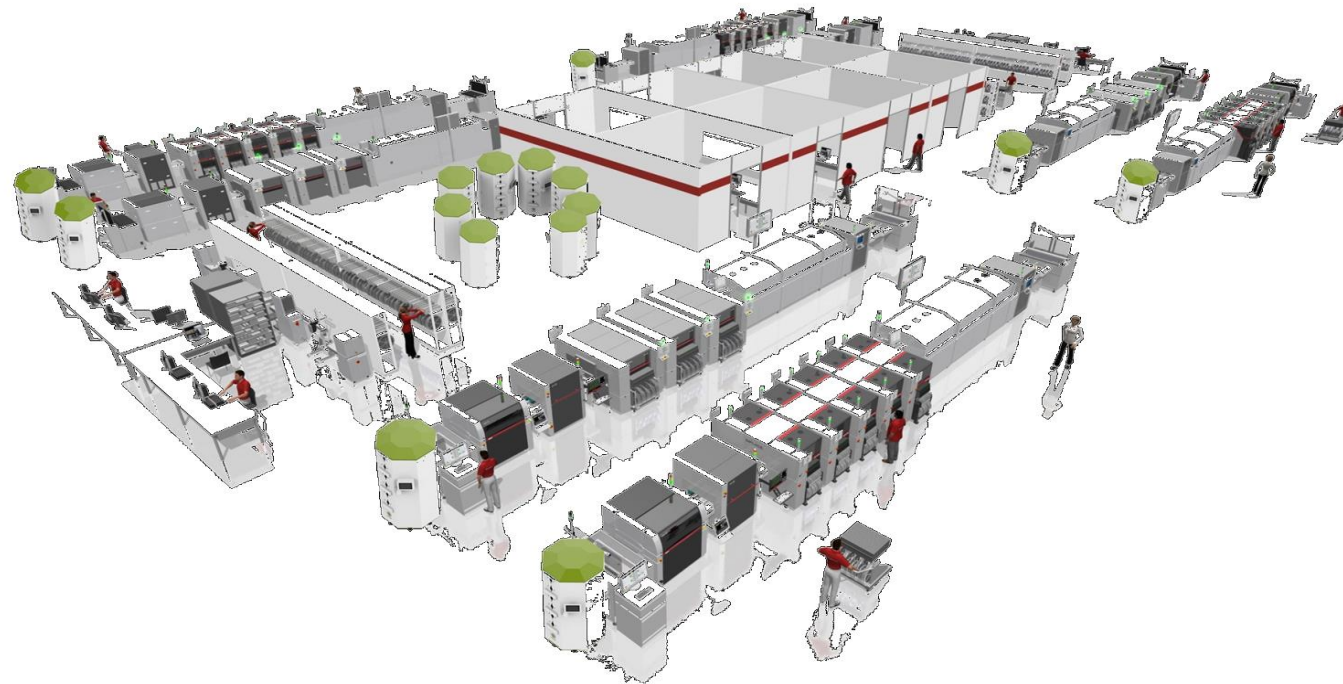
**13/15 inches
reels:**
oddfom
components,
IC type



- ★ Meeting personal needs of flexible division in terms of customer, machine and status
- ★ The storage seat changes with material change

Feature 5:

Flexible for area and site changes



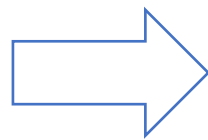
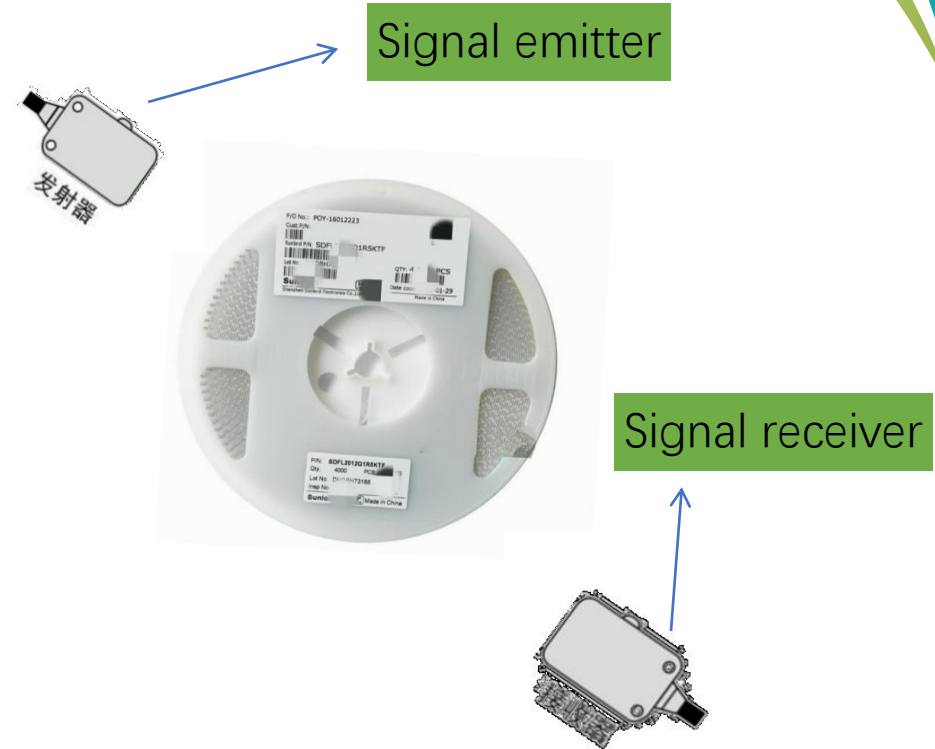
Can be applied in line area warehouse or the main warehouse
The user can make adjustment anytime.

Feature 6:

Enclosed silo, fool/error proof



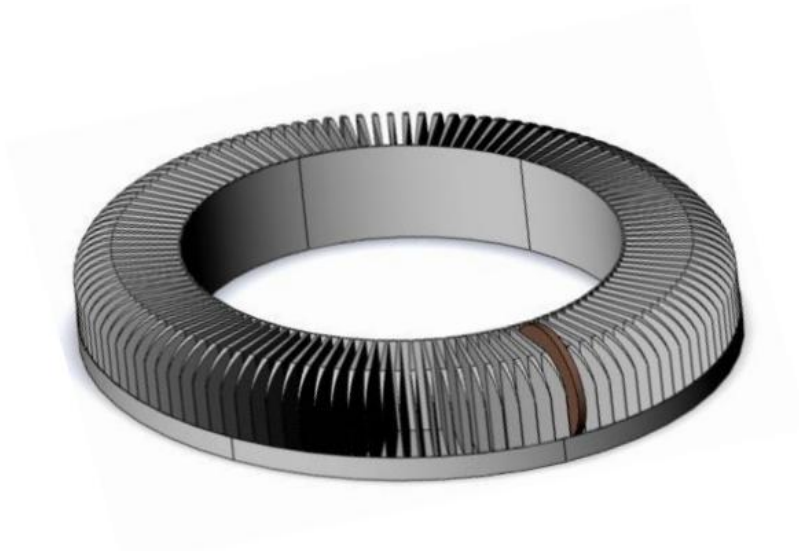
material status
detection sensor



During the process of taking and placing materials, if the wrong pick or misplacement occurs, the system will alarm and it'll be locked. The material can be taken only through the authentication.

Feature 7:

Small size, major capacity



1. Fan-shaped geometric die opening

2. Narrow inside and wide open mouth

3. Easy material in and out

4. Large capacity

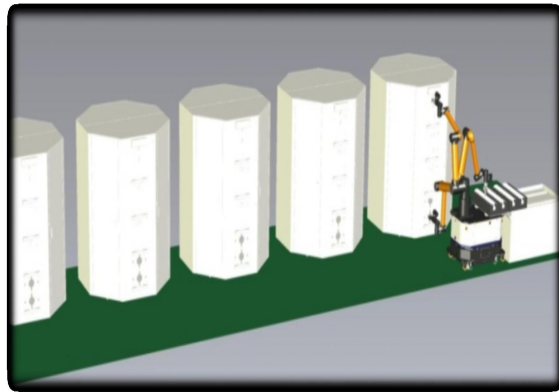


◆ The best balance point found between “easy material taking in and out” and “large capacity”!

◆ According to SMT material specifications and characteristics, combining compatibility, handling, practical application scenarios and so on, continuously optimize and upgrade to maximize SMT material storage capacity.

Feature 8:

Stable and reliable unmanned solution



Building block expansion to achieve unmanned operation(optional):
Smart combination:independent, loadable, and flexible configuration.
If the manipulator fails, it can be operated in a man-machine
cooperation mode without affecting the production cycle.

Smart Reel Storage Silo

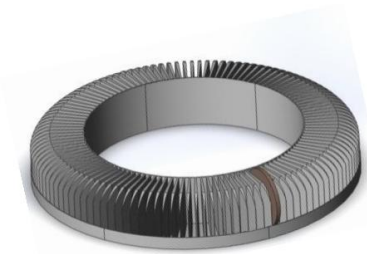
Equipment Size	Model	Specification	Storage Capacity
Length: 1520mm width: 1520mm Hight: 2200mm Area: 2.3 square meters	S-1440	7 Inches 8mm	1400 reels
	S-960	7 Inches 12-16mm	960 reels
	S-1308	13 Inches 8mm	600 reels
	S-5060	13 Inches 12mm-32mm	300 reels
	S-840	13 inches&7 inches (12mm-32mm)	840 reels
Can custimize based on customer needs, maximizing the storage capacity			



- ◆ Modular silo design brings users the FEEDER type experience.
- ◆ Users can flexibly configure the type according to their own material structure and production capacity requirements, number and quantity.
- ◆ A variety of specifications are optional.



Flexible investment



- ◆ 120-180 reels per layer, 720-1440 trays per silo

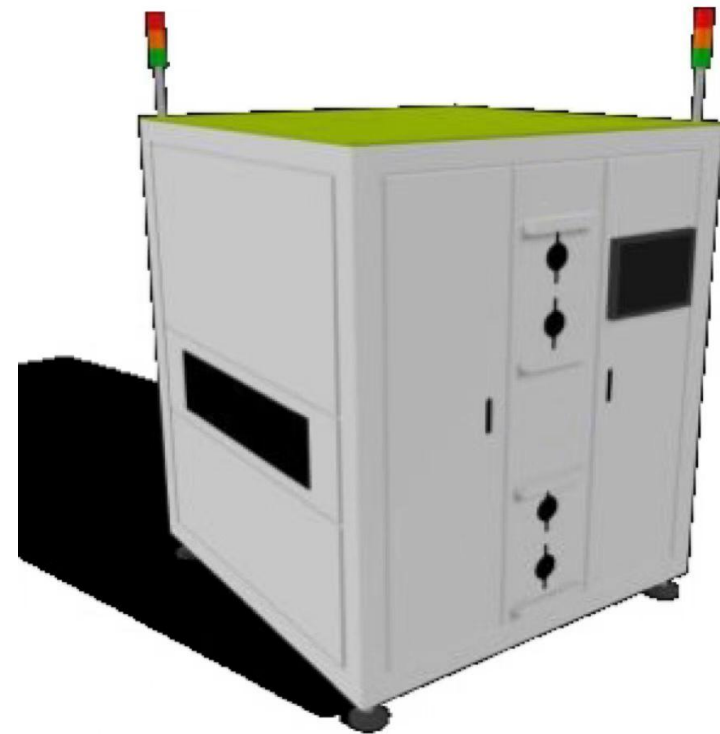
- ◆ Modular design, a small base, high investment flexibility

- ◆ Single Cabinet 7000-16000 reels

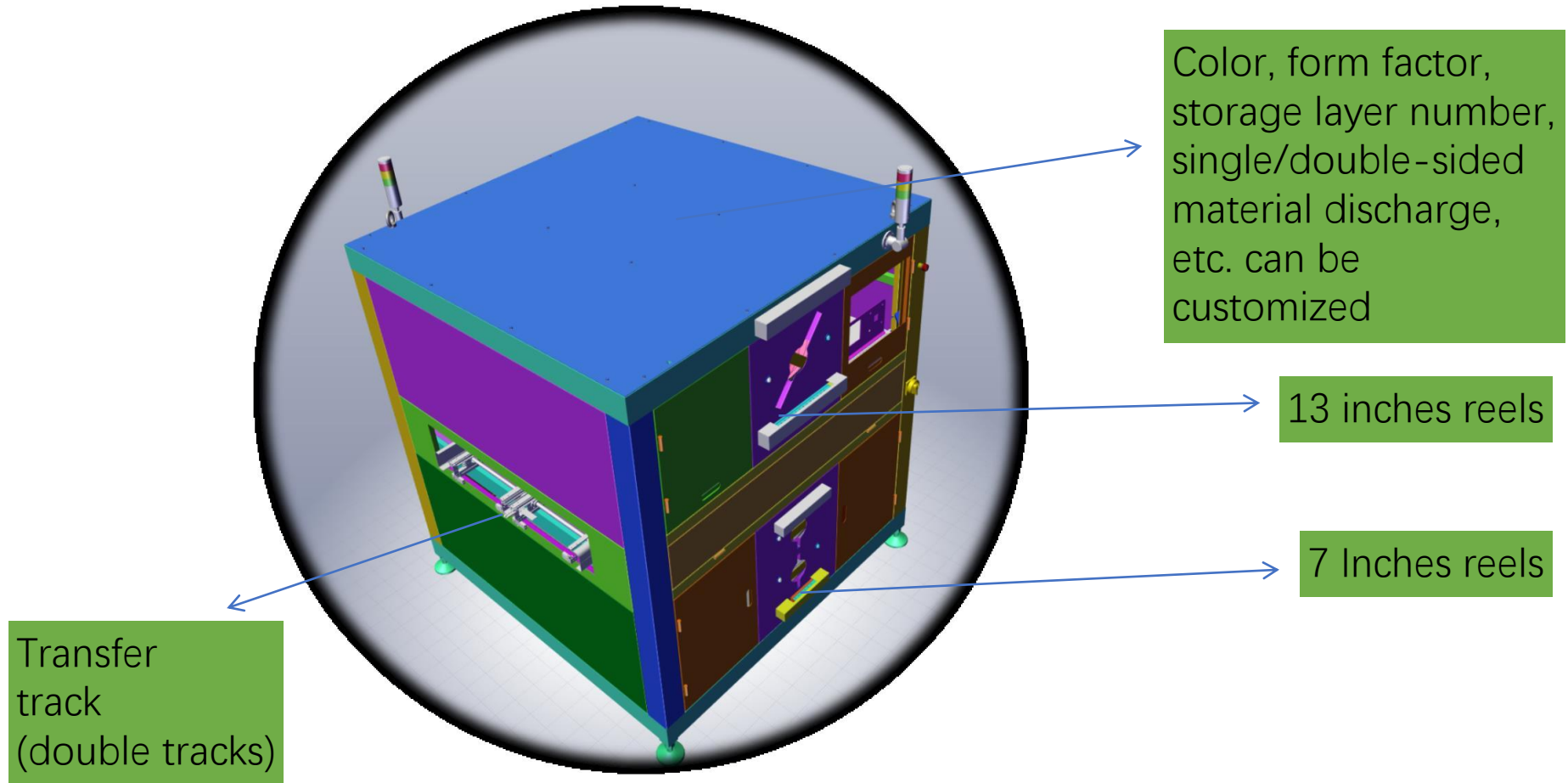
- ◆ Single warehouse capacity, easy to cause excess capacity and waste of resources, choose not flexible

The world's first double-sided on-line smart reel storage silo

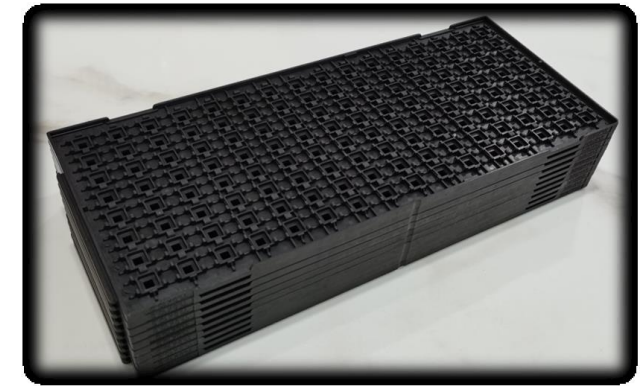
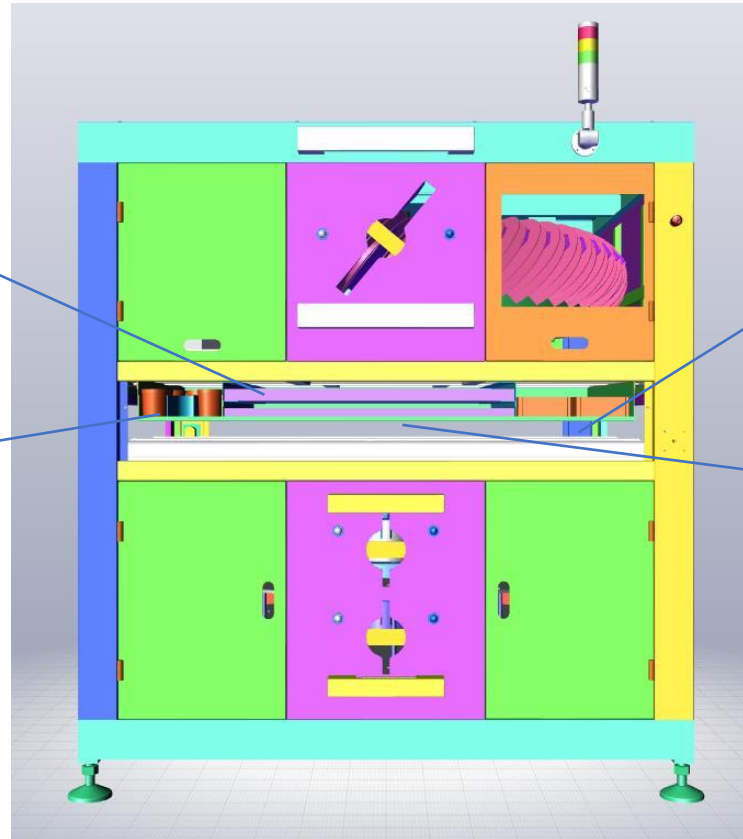
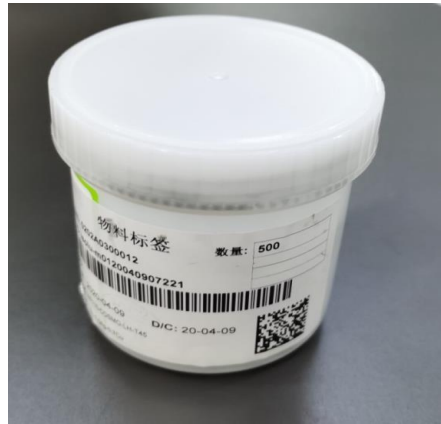
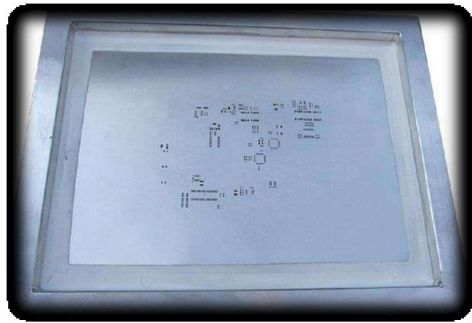
- Placed in line:
Do not occupy the passage, solve site constraints.
- Two-side feeding:
two-side feeding, reduce walking distance
- Networking Online:
pull-type feed, timely and adequate supply
- Thoroughly error-proof:
the machine calls the material, one reel at a time, thoroughly error-proof
- On-line unwinding:
simplify the process, save people efficient
- TWO-TRACK TRANSFER:
International Standard two-track design,
and SMT equipment perfect docking



Appearance

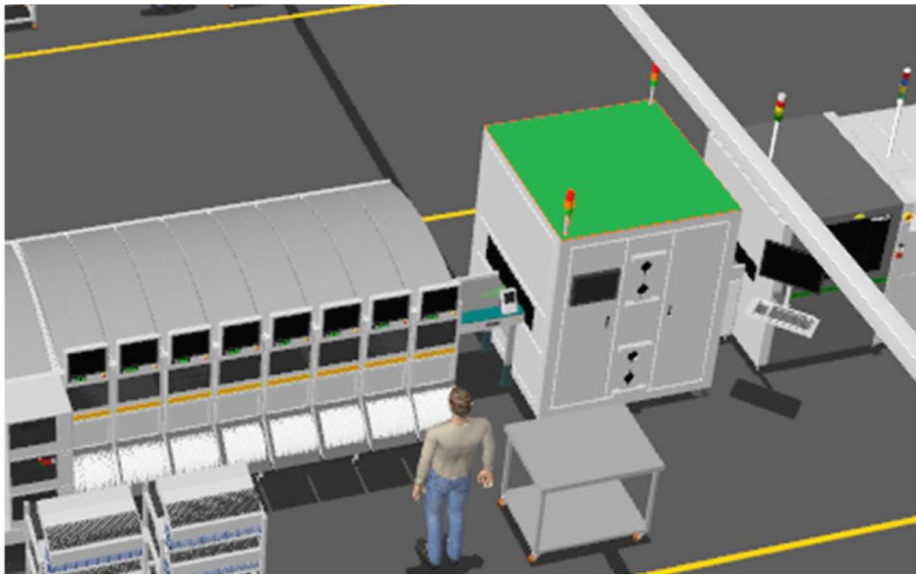


Comprehensive management of workshop,
realizing more orderly workshop

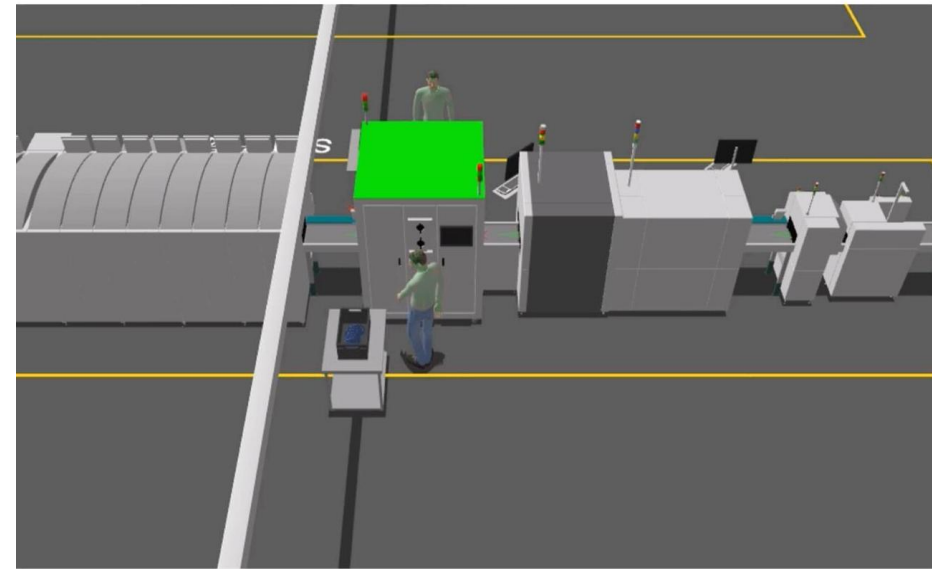


Smart Reel Storage Silo

Save space, take material on both sides, reduce the distance of personnel walking



The online silo is placed in the line; save space and do not affect the logistics channel.



Both sides take material, man, machine, material closer to reduce personnel walking distance.

Types



SMT Line Area Silo

SMT Main Silo

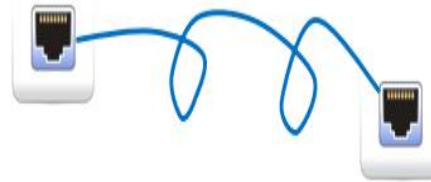
SMT Online Silo



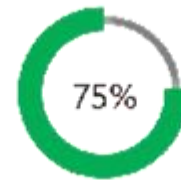
Applicable for multiple scenes

At the same time, products open cooperation, perfect integration of third-party software and equipment.

MES Material Issuing



Futile work
time
reduced by
75%

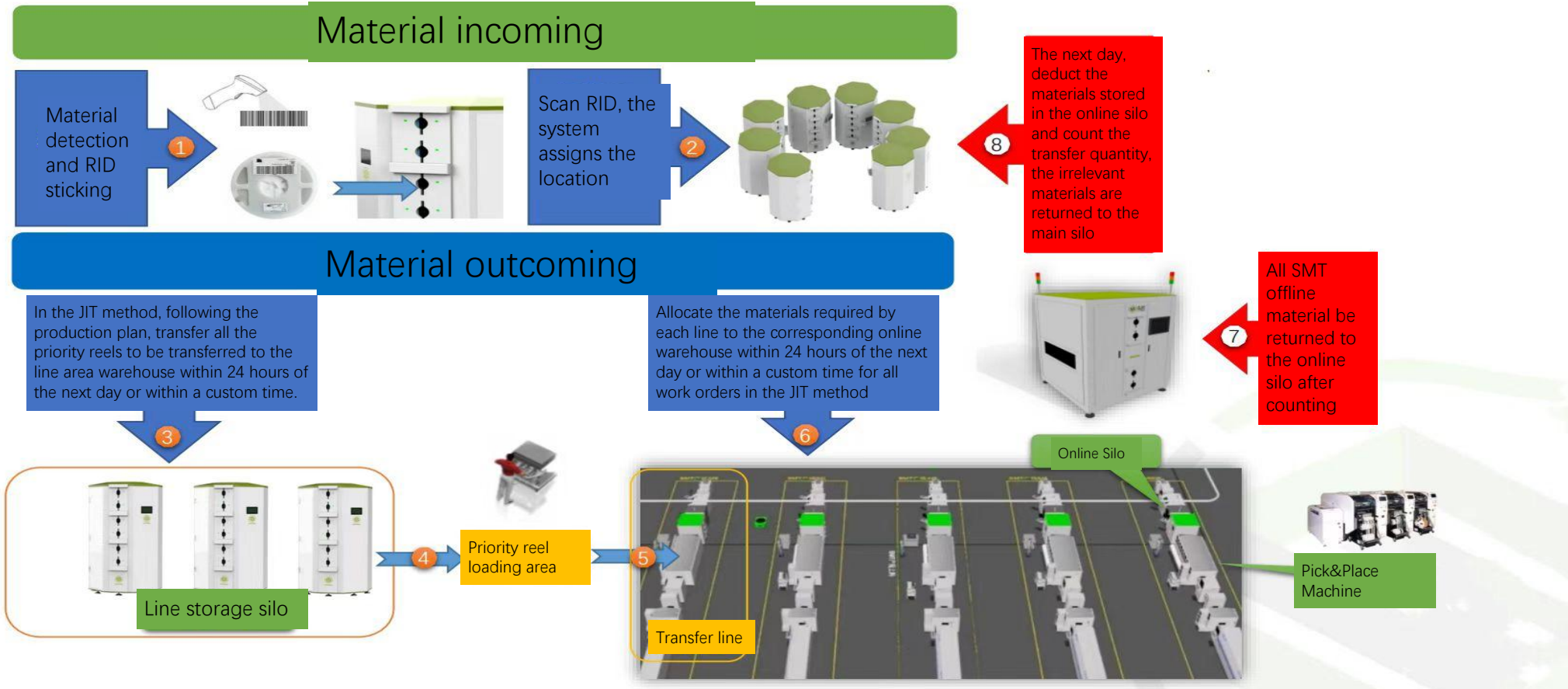


Improve back-to-
warehouse returning
counting efficiency
by 75%

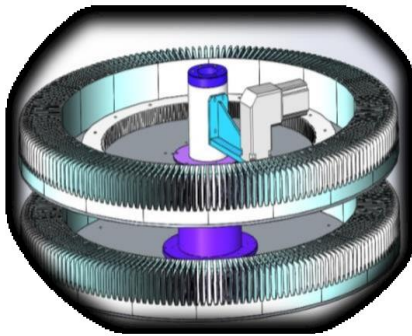


Material
searching
and loading time
reduced by 45%

Technical workflow



Substantial quality



1. **All lines are of fixed design and are not bent during operation**, prolonging their service life and reducing the occurrence of failures.

2. The key components use the world's most trusted brands **Schneider, Mitsubishi, Keyence, Omron**, etc.

3. **Modular design**, minimizing impact.

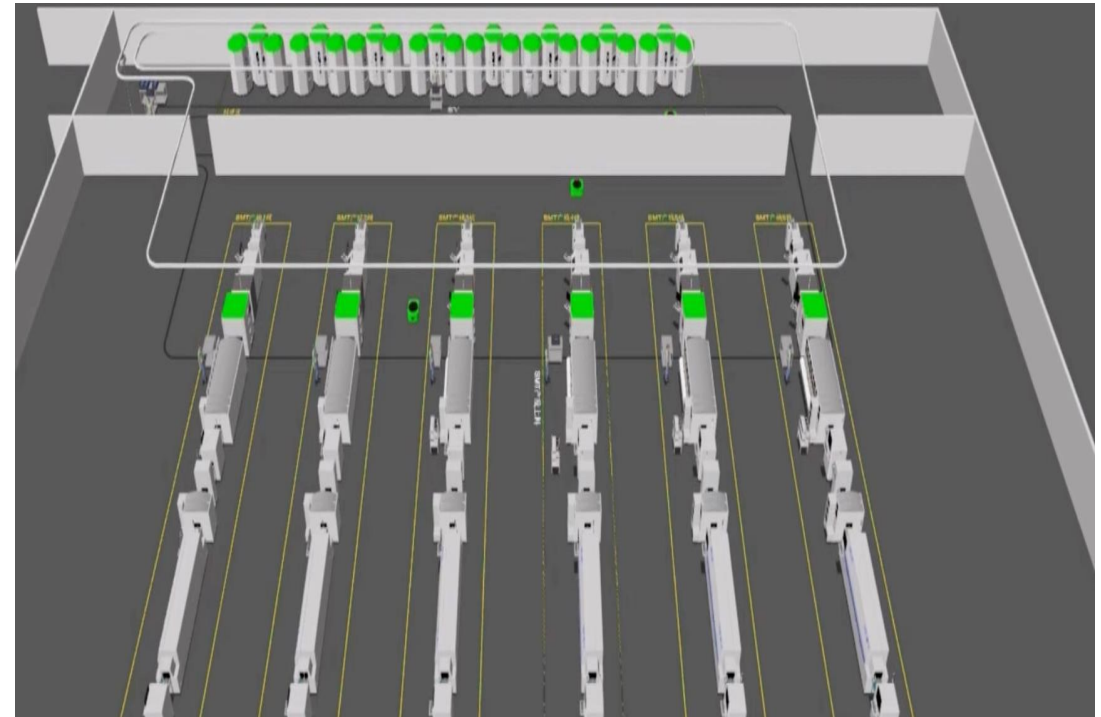
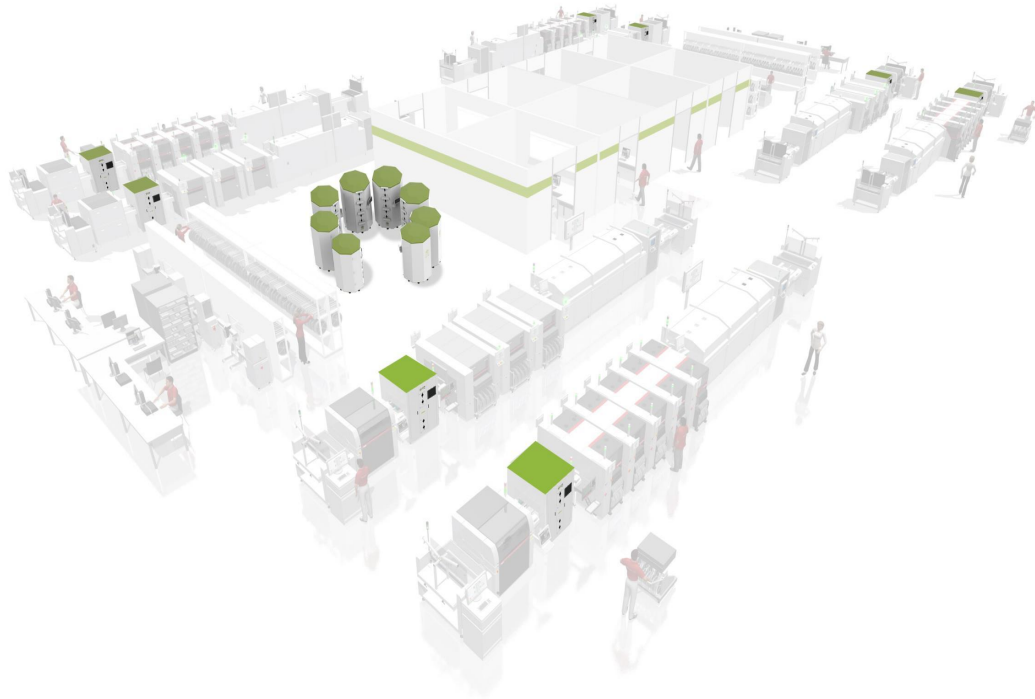
4. **Quickly remove risk**

The storage location is marked with a QR code, which can be scanned by a scanner gun to extract materials and related storage location information, and quickly transfer them to adjacent silos.

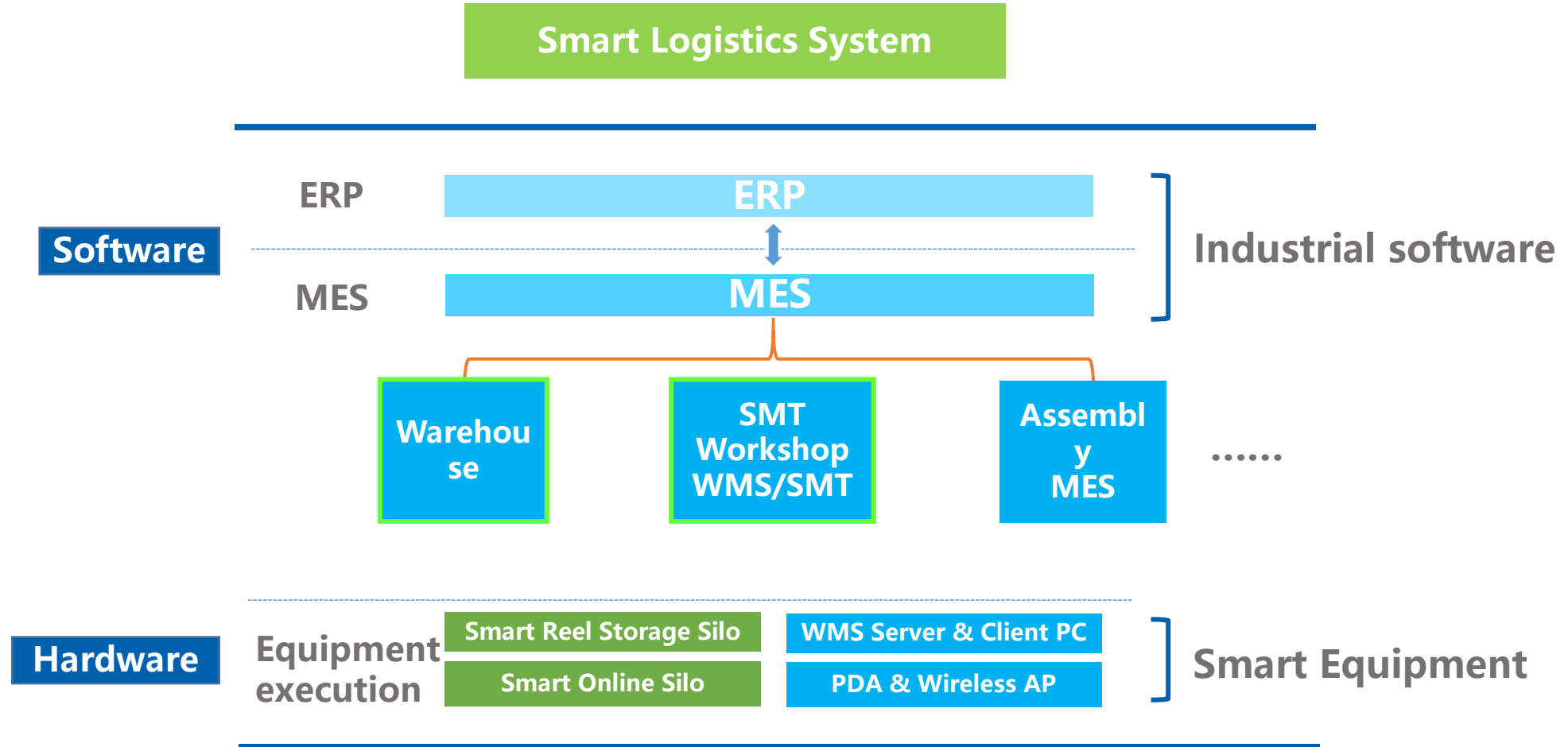
Application examples



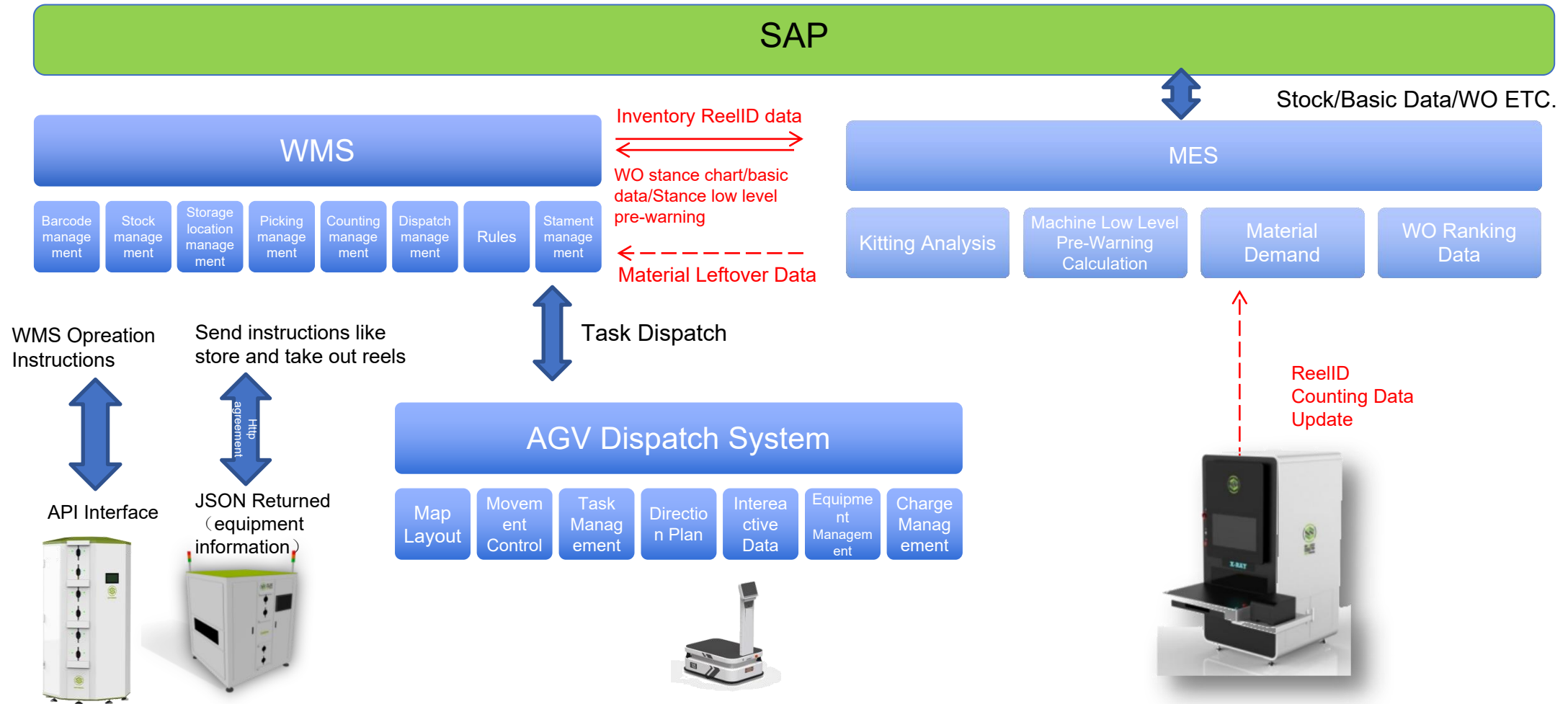
Layout



Smart Reel Storage Silo



Smart Reel Storage Silo



- WMS and AGV currently adopt butting methods like WebAPI, webservice
- WebAPI (HTTP Agreement+JSON data format) is adoped to for WMS and Smart Silo communication. WMS mainly send control command like storing and taking out reels to the Smart Silo to control its operation. The Smart Silo returns the equipment information to WMS.
- WMS communicates with WebAPI through WebAPI directly by applying API interface.



仁寶電腦

AMD 



H3C



星宇股份
XINGYU CO., LTD.

SUNWODA
欣旺达

卡奥斯 COSMOPlat



Haier



CNIT
云尖信息



中国航天

Best After-sales service

- **7x24 Worldwide Support**
- **Free Installation/ Training**
- **1 day lead-time (spare parts)**
- **1 Month customize solution**



Welcome Inquiry

Please visit www.smthelp.com

Find us more <https://www.facebook.com/autoinsertion>

Know more our team <https://cn.linkedin.com/in/smtsupplier>

Welcome to our factory in Shenzhen China

See more machine working video, please Youtube [Auto Insertion](#)

Google [Auto+insertion](#), to get more information

Looking forward to your email marie@smthelp.com