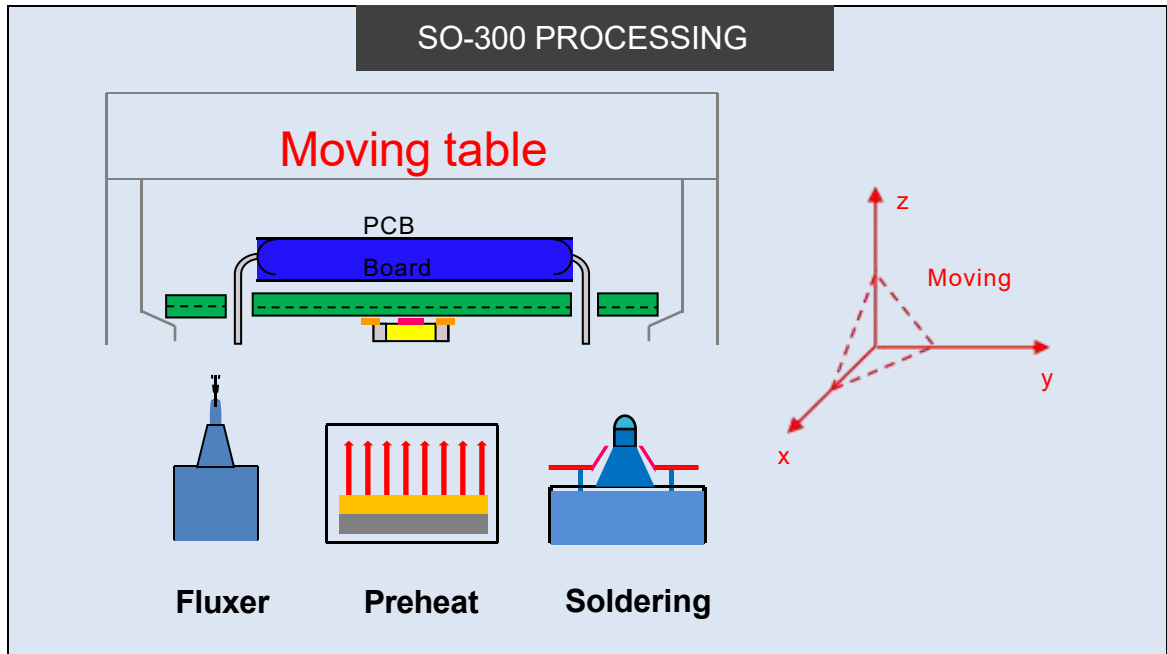
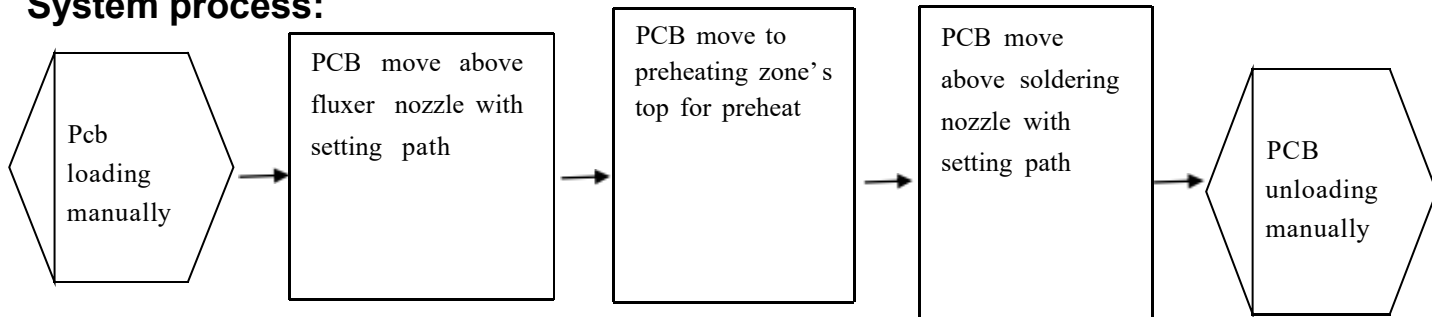


SO-300 Specification:





System process:



Advantageous:

- a All in one machine, in same XYZ motion table combine selective fluxing and soldering, compact & full function.
- b PCB board movement, fluxer nozzle and solder pot fixed.
- c High quality soldering.
- d Can used beside production line, flexible for production line forming.

- e Full PC control. All parameters can set in PC and saved to PCB menu, like moving path, solder temperature, flux type, solder type ,n2 temperature etc, best trace-ability and easy to get repeat soldering quality.

Standard machine include:

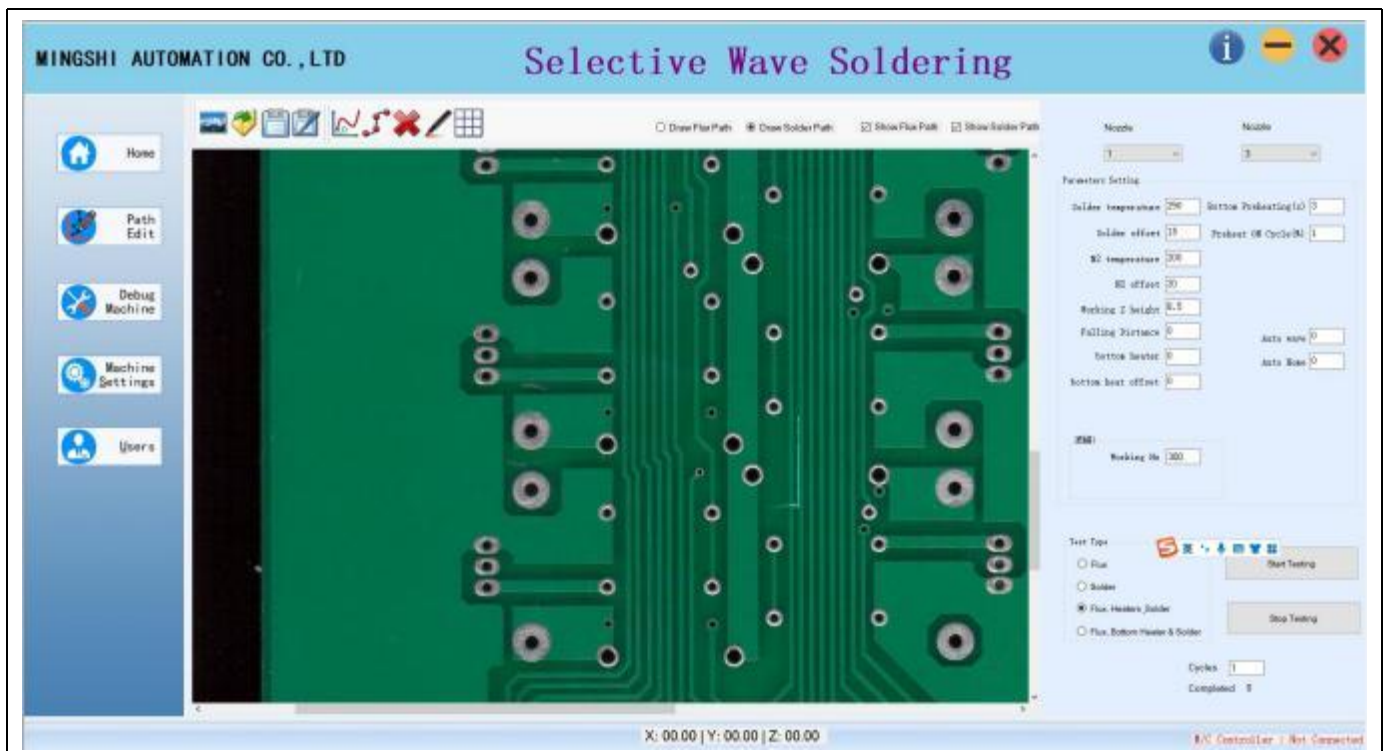
Serial	Item	Content	Quantity
1	Controlling system	PC & monitor	1 set
		Live on monitor camera	
		motion control	
2	PCB Motion table	xyz motion table	1 set
		3 axis equipped with ball screw & linear guild rail	
		3 axis equipped with servo motor & driver	
3	Fluxing system	Imported fluxing jetting valve	1 set
		flux tank	
		flux pneumatic system	
4	preheating system	IR heater at bottom	1 set
5	Soldering pot	15kg capacity solder pot, impeller, tunnel, servor motor	1 set
		solder temperature controlling system	
		n2 inline heating system	

		(4mm x 3pcs, 5mm,6mm) Standard equipped solder nozzle	
6	Machine chassis	machine frame/cover & painting	1 set

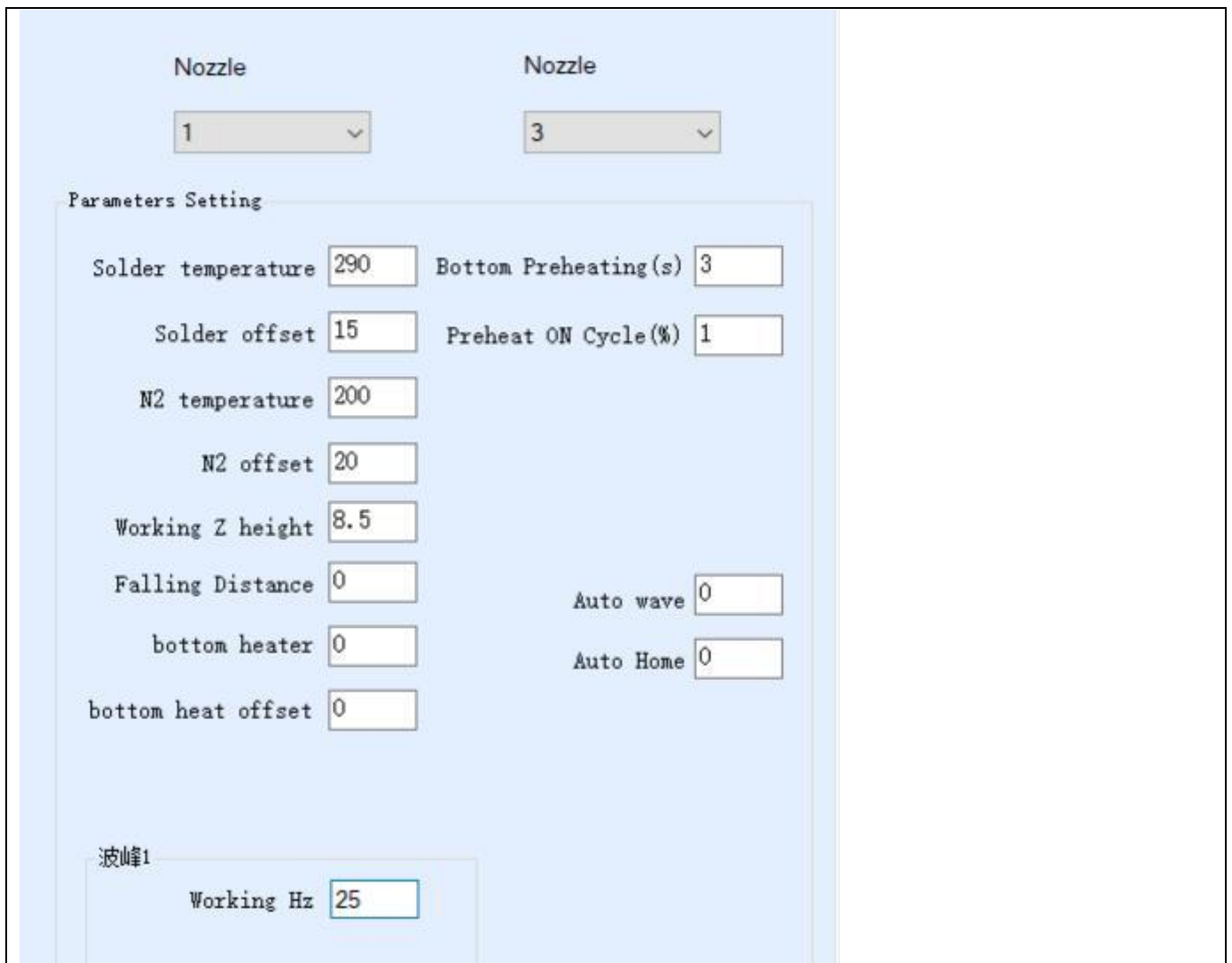
Machine explanation

Part1: Software

All software system developed by base on Windows7 system, with good trace-ability.



- g Use scanned picture as background for path programming, moving speed, dwell time, empty move speed, Z height , wave height etc all programmed for different solder site.



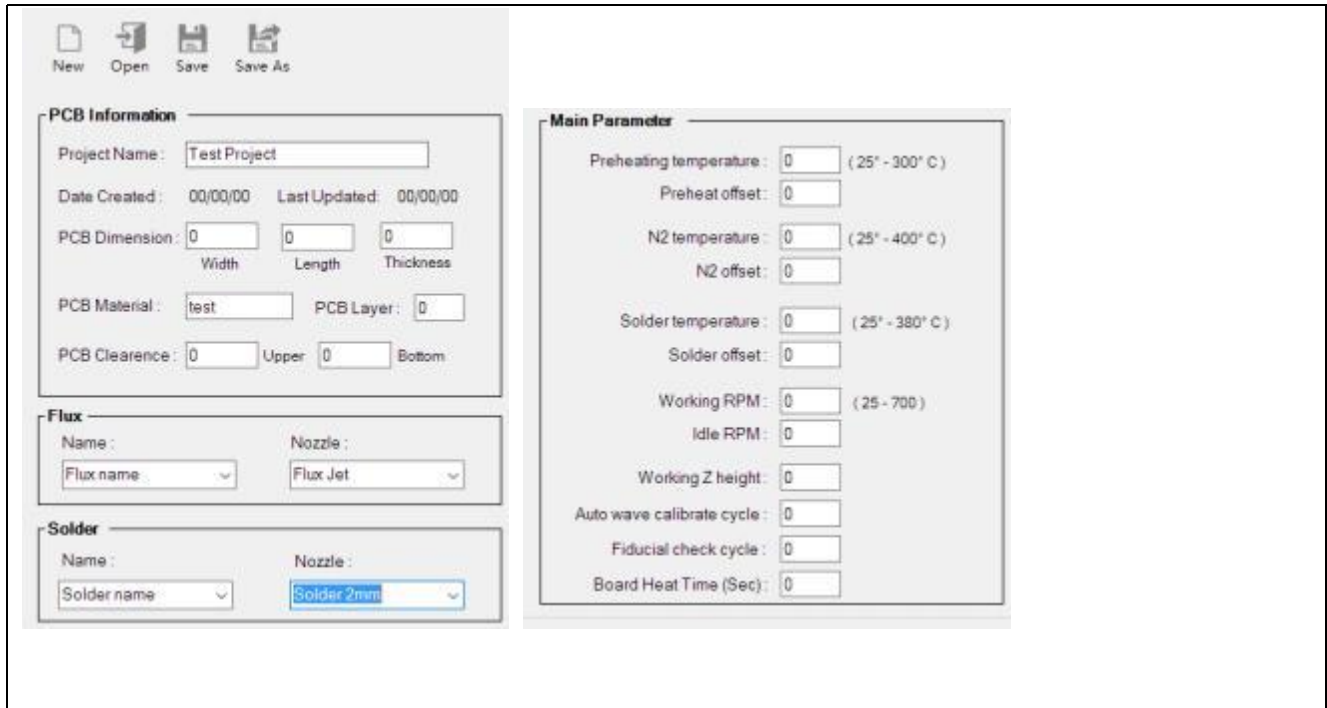
The screenshot displays a software interface for configuring soldering parameters. At the top, there are two 'Nozzle' dropdown menus, with the first set to '1' and the second to '3'. Below these is a 'Parameters Setting' section containing the following fields:

- Solder temperature: 290
- Bottom Preheating (s): 3
- Solder offset: 15
- Preheat ON Cycle(%): 1
- N2 temperature: 200
- N2 offset: 20
- Working Z height: 8.5
- Falling Distance: 0
- Auto wave: 0
- bottom heater: 0
- Auto Home: 0
- bottom heat offset: 0

At the bottom left, there is a section labeled '波峰1' (Wave Peak 1) with a 'Working Hz' field set to 25.

- h Show solder process with live on camera.
- i Critical parameters are totally under monitoring by PC software, like temperature, speed, pressure etc.

Add: Rm1806,Block3,Jinyun COFCO,Qianjin 2nd Road,
Banan District, Shenzhen City
Jason Wu(CEO) Mob: 13602562576 Tel:0755-83203237
E - m a i l : jasonwu@smthelp.com



Part2: motion system

j Motion table was designed base on lighting concept.

k Panasonic servo motor & driver provide stable driving power, screw pole & linear guild rail for guidance. Precious position, less noise, stable movement.



Add: Rm1806,Block3,Jinyun COFCO,Qianjin 2nd Road,
Banan District, Shenzhen City
Jason Wu(CEO) Mob: 13602562576 Tel:0755-83203237
E - m a i l : jasonwu@smthelp.com

Part 3: fluxing system

- l Japan original injection valve, adapt to various flux
- m Flux is stocked by PP plastic pressure tank, make sure pressure stable without influenced of amount of flux.



Part 4: Preheat

- n Bottom preheating is standard equipped in machine, Position is adjustable.
- o Heating ratio is adjustable by PC, from 0 ---100%



Add: Rm1806,Block3,Jinyun COFCO,Qianjin 2nd Road,
Banan District, Shenzhen City
Jason Wu(CEO) Mob: 13602562576 Tel:0755-83203237
E - m a i l : jasonwu@smthelp.com

Part 5: solder pot

p Solder temperature, N2 temperature, wave height, wave calibration etc all able to set in software.

q Solder pot is made of Ti, not leakage. With cast iron heater outside, robust & quick heat up.

N2 online heating system, to wet the soldering perfectly and reduce the solder dross.



Part 6: PCB conveyor:

r Load board manually and unload board manually

Add: Rm1806,Block3,Jinyun COFCO,Qianjin 2nd Road,
 Banan District, Shenzhen City
 Jason Wu(CEO) Mob: 13602562576 Tel:0755-83203237
 E - m a i l : jasonwu@smthelp.com



Part 7: machine chassis

s Metal welding structure, with thick metal plate as base, so to reduce vibration and make machine more stable.

Machine specs

Machine name	SO-300
General	
dimension	L1220mm X W1000mm X H1450mm
general power	5kw
consumption power	1--3kw
power supply	Single-phase 220V 50HZ
net weight	380KG
reuiqred air source	3-5 Bars
required air flow	8-12L/min
required N2 pressure	3-4 Bars

required N2 flow	greater than 2 m ³ /hour
required N2 purity	» 99.998%
required exhausting	500--800CMB/H
carrier or PCB	
carrier	Using by requirement
max solder area	L300 X W300MM (Size customized able)
PCB thickness	0.2mm-----6mm
Pcb edge	3mm
Controlling & conveyor	
Controlling	Industrial PC
PCB Loading board	Manual
PCB Unloading board	Manual
Operating height	900+/-30mm
PCB conveyor up clearance	50MM
PCB conveyor bottom clearance	30MM
Motion table	
motion axis	X, Y, Z
motion control	闭环伺服控制 Servo control
position accuracy	+ / - 0.1 mm
Chassis	Steel structure welding
Flux management	
flux nozzle	jet valve
flux tank capacity	1L

flux tank	Soldering flux container
Preheat	
preheat method	Bottom infrared preheating
heater's power	3kw
temperature range	25--240c degree
solder pot	
standard pot number	1
solder pot capacity	15 kgs /Furnace
solder temperature range	PID
melting time	60--90 Minutes
max solder temperature	350 C
solder heater	1.2kw
solder nozzle	
nozzle dim	Customized shape
material	alloy steel
standard equipped nozzle	Standard configuration of 5 pieces per furnace (inner diameter of 3mm, 4mm, 5mm, 6mm, and 8mm)

N2 management	
N2 heater	standard configuration
PID Control N2 temp range	0 - 350 C
N2 consumption	1-2m ³ /h/pot