

SMT PCB ESD Magazine Rack Catalog

Model	Outline Dimension(mm)			Basic Materials	PCB Stored	PCB size(mm)	Heat-resistan Temperature(°C)
	L	W	H				
G6601	355	320	563	PP	50	50-250	80
GE6601	355	320	563	PPE	50	50-250	120
G6601A	355	315	580	PP	50	80-250	80
G6601B	355	320	563	PP	50	50-255	80
G6602	460	400	563	Metal	50	50-330	350
GE6602	460	400	563	PPE	50	50-330	120
G6603	535	460	570	Metal	50	50-400	350
GE6603	535	460	570	PPE	50	50-400	120
G6604	535	530	570	Metal	50	50-460	350

Model	Outline Dimension(mm)			Basic Materials	PCB Stored	PCB size(mm)	Heat-resistan Temperature(°C)
	L	W	H				
GE6604	535	530	570	PPE	50	50-460	120
G6604A	630	530	570	PP	50	50-460	80
G6605	355	315	315	PP	25	50-250	80
G6606	355	320	463	PP	30	35-250	80
GE6606	355	320	463	PPE	30	35-250	120
G6607	355	320	363	PP	20	35-250	80
GE6607	355	320	363	PPE	20	35-250	120
G6608	355	320	263	PP	10	35-250	80
GE6608	355	320	263	PPE	10	35-250	120

G6601

Contour Size(L*W*H): 355*320*563 mm

Adjustment Method: Handle Adjustable

Side Plate: Whole Plates

Base Materials: PP

Slot of side plate

Depth: 3.5mm

Width: 5mm

Pitch: 10mm

PCB use standard

Adjustable Width: 50-250mm

PCB Stored: 50

Surface Resistance

Conductive Type $< 1E6\Omega$

Dissipative Type $1E6\Omega \sim 1E11\Omega$

Temperature: $< 80^{\circ}\text{C}$



Notice: The basic material can be replaced by aluminum alloy, and the temperature resistance is up to 350°C

GE6601

Contour Size(L*W*H): 355*320*563 mm

Adjustment Method: Handle Adjustable

Side Plate: Whole Plates

Base Materials: PPE

Slot of side plate

Depth: 3.5mm

Width: 5mm

Pitch: 10mm

PCB use standard

Adjustable Width: 50-250mm

PCB Stored: 50

Surface Resistance

Conductive Type $<1E6\Omega$

Dissipative Type $1E6\Omega\sim 1E11\Omega$

Temperature: $< 120^{\circ}\text{C}$



Notice: The basic material can be replaced by aluminum alloy, and the temperature resistance is up to 350°C

G6601A

Contour Size(L*W*H): 355*315*580 mm

Adjustment Method: Screw Adjustable

Side Plate: Whole Plates

Base Materials: PP

Slot of side plate

Depth: 3.5mm

Width: 7mm

Pitch: 10mm

PCB use standard

Adjustable Width: 80-250mm

PCB Stored: 50

Surface Resistance

Conductive Type $< 1E6\Omega$

Dissipative Type $1E6\Omega \sim 1E11\Omega$

Temperature: $< 80^{\circ}\text{C}$



Notice: The basic material can be replaced by aluminum alloy, and the temperature resistance is up to 350°C

G6601B

Contour Size(L*W*H): 355*320*563 mm

Adjustment Method: Screw Adjustable

Side Plate: Whole Plates

Base Materials: PP

Slot of side plate

Depth: 3mm

Width: 5mm

Pitch: 10mm

PCB use standard

Adjustable Width: 50-255mm

PCB Stored: 50

Surface Resistance

Conductive Type $< 1E6\Omega$

Dissipative Type $1E6\Omega \sim 1E11\Omega$

Temperature: $< 80^{\circ}\text{C}$



Notice: The basic material can be replaced by aluminum alloy, and the temperature resistance is up to 350°C

G6602

Contour Size(L*W*H): 460*300*563 mm

Adjustment Method: Handle Adjustable

Side Plate: Five Piece Assembled

Base Materials: Aluminum Alloy

Slot of side plate

Depth: 3mm

Width: 5mm

Pitch: 10mm

PCB use standard

Adjustable Width: 50-330mm

PCB Stored: 50

Surface Resistance

Conductive Type $< 1E6\Omega$

Dissipative Type $1E6\Omega \sim 1E11\Omega$

Temperature: $< 350^{\circ}\text{C}$



GE6602

Contour Size(L*W*H): 460*300*563 mm

Adjustment Method: Handle Adjustable

Side Plate: Five Piece Assembled

Base Materials: PPE

Slot of side plate

Depth: 3mm

Width: 5mm

Pitch: 10mm

PCB use standard

Adjustable Width: 50-330mm

PCB Stored: 50

Surface Resistance

Conductive Type $< 1E6\Omega$

Dissipative Type $1E6\Omega \sim 1E11\Omega$

Temperature: $< 120^{\circ}\text{C}$



G6603

Contour Size(L*W*H): 535*460*570 mm

Adjustment Method: Handle Adjustable

Side Plate: Five Piece Assembled

Base Materials: Aluminum Alloy

Slot of side plate

Depth: 4mm

Width: 5mm

Pitch: 10mm

PCB use standard

Adjustable Width: 50-400mm

PCB Stored: 50

Surface Resistance

Conductive Type $<1E6\Omega$

Dissipative Type $1E6\Omega\sim 1E11\Omega$

Temperature: $< 350^{\circ}\text{C}$



GE6603

Contour Size(L*W*H): 535*460*570 mm

Adjustment Method: Handle Adjustable

Side Plate: Five Piece Assembled

Base Materials: PPE

Slot of side plate

Depth: 4mm

Width: 5mm

Pitch: 10mm

PCB use standard

Adjustable Width: 50-400mm

PCB Stored: 50

Surface Resistance

Conductive Type $< 1E6\Omega$

Dissipative Type $1E6\Omega \sim 1E11\Omega$

Temperature: $< 80^{\circ}\text{C}$



G6604

Contour Size(L*W*H): 535*530*570 mm

Adjustment Method: Handle Adjustable

Side Plate: Five Piece Assembled

Base Materials: Aluminum Alloy

Slot of side plate

Depth: 3.5mm

Width: 5mm

Pitch: 10mm

PCB use standard

Adjustable Width: 50-460mm

PCB Stored: 50

Surface Resistance

Conductive Type $< 1E6\Omega$

Dissipative Type $1E6\Omega \sim 1E11\Omega$

Temperature: $< 350^{\circ}\text{C}$



GE6604

Contour Size(L*W*H): 535*530*570 mm

Adjustment Method: Handle Adjustable

Side Plate: Five Piece Assembled

Base Materials: PPE

Slot of side plate

Depth: 3.5mm

Width: 5mm

Pitch: 10mm

PCB use standard

Adjustable Width: 50-460mm

PCB Stored: 50

Surface Resistance

Conductive Type $< 1E6\Omega$

Dissipative Type $1E6\Omega \sim 1E11\Omega$

Temperature: $< 120^{\circ}\text{C}$



G6604A

Contour Size(L*W*H): 630*530*570 mm

Adjustment Method: Screw Adjustable

Side Plate: Two Piece Assembled

Base Materials: PPE

Slot of side plate

Depth: 4mm

Width: 6.5mm

Pitch: 10mm

PCB use standard

Adjustable Width: 50-460mm

PCB Stored: 50

Surface Resistance

Conductive Type $<1E6\Omega$

Dissipative Type $1E6\Omega\sim 1E11\Omega$

Temperature: $< 350^{\circ}\text{C}$



G6605

Contour Size(L*W*H): 355*315*315 mm

Adjustment Method: Screw Adjustable

Side Plate: Whole Plates

Base Materials: PP

Slot of side plate

Depth: 3.5mm

Width: 7mm

Pitch: 10mm

PCB use standard

Adjustable Width: 50-250mm

PCB Stored: 25

Surface Resistance

Conductive Type $< 1E6\Omega$

Dissipative Type $1E6\Omega \sim 1E11\Omega$

Temperature: $< 80^{\circ}\text{C}$



G6606

Contour Size(L*W*H): 355*320*463 mm

Adjustment Method: Screw Adjustable

Side Plate: Whole Plates

Base Materials: PP

Slot of side plate

Depth: 3.5mm

Width: 5mm

Pitch: 10mm

PCB use standard

Adjustable Width: 35-250mm

PCB Stored: 30

Surface Resistance

Conductive Type $< 1E6\Omega$

Dissipative Type $1E6\Omega \sim 1E11\Omega$

Temperature: $< 80^{\circ}\text{C}$



Notice: The basic material can be replaced by aluminum alloy, and the temperature resistance is up to 350°C

GE6606

Contour Size(L*W*H): 355*320*463 mm

Adjustment Method: Screw Adjustable

Side Plate: Whole Plates

Base Materials: PPE

Slot of side plate

Depth: 3.5mm

Width: 5mm

Pitch: 10mm

PCB use standard

Adjustable Width: 35-250mm

PCB Stored: 30

Surface Resistance

Conductive Type $<1E6\Omega$

Dissipative Type $1E6\Omega\sim 1E11\Omega$

Temperature: $< 120^{\circ}\text{C}$



Notice: The basic material can be replaced by aluminum alloy, and the temperature resistance is up to 350°C

G6607

Contour Size(L*W*H): 355*320*363 mm

Adjustment Method: Screw Adjustable

Side Plate: Whole Plates

Base Materials: PP

Slot of side plate

Depth: 3.5mm

Width: 5mm

Pitch: 10mm

PCB use standard

Adjustable Width: 35-250mm

PCB Stored: 20

Surface Resistance

Conductive Type $< 1E6\Omega$

Dissipative Type $1E6\Omega \sim 1E11\Omega$

Temperature: $< 80^{\circ}\text{C}$



Notice: The basic material can be replaced by aluminum alloy, and the temperature resistance is up to 350°C

GE6607

Contour Size(L*W*H): 355*320*363 mm

Adjustment Method: Screw Adjustable

Side Plate: Whole Plates

Base Materials: PPE

Slot of side plate

Depth: 3.5mm

Width: 5mm

Pitch: 10mm

PCB use standard

Adjustable Width: 35-250mm

PCB Stored: 20

Surface Resistance

Conductive Type $< 1E6\Omega$

Dissipative Type $1E6\Omega \sim 1E11\Omega$

Temperature: $< 120^{\circ}\text{C}$



Notice: The basic material can be replaced by aluminum alloy, and the temperature resistance is up to 350°C

G6608

Contour Size(L*W*H): 355*320*263 mm

Adjustment Method: Screw Adjustable

Side Plate: Whole Plates

Base Materials: PP

Slot of side plate

Depth: 3.5mm

Width: 5mm

Pitch: 10mm

PCB use standard

Adjustable Width: 35-250mm

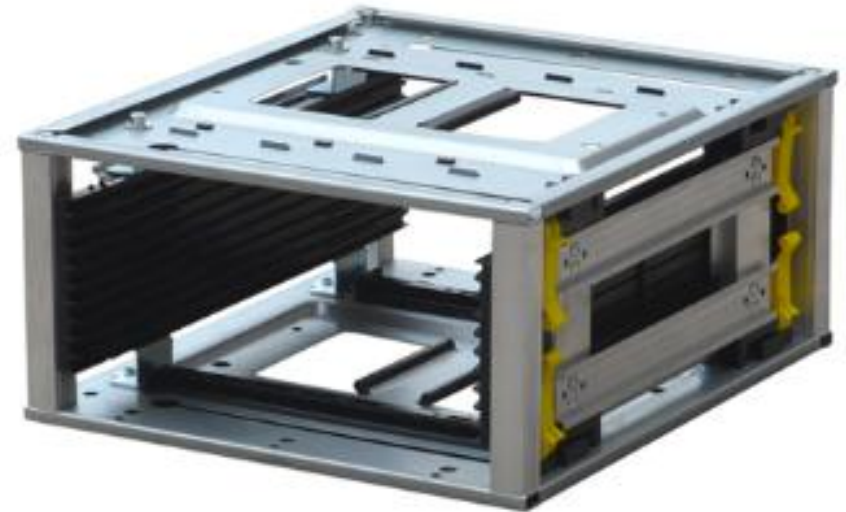
PCB Stored: 10

Surface Resistance

Conductive Type $< 1E6\Omega$

Dissipative Type $1E6\Omega \sim 1E11\Omega$

Temperature: $< 80^{\circ}\text{C}$



Notice: The basic material can be replaced by aluminum alloy, and the temperature resistance is up to 350°C

G6608

Contour Size(L*W*H): 355*320*263 mm

Adjustment Method: Screw Adjustable

Side Plate: Whole Plates

Base Materials: PPE

Slot of side plate

Depth: 3.5mm

Width: 5mm

Pitch: 10mm

PCB use standard

Adjustable Width: 35-250mm

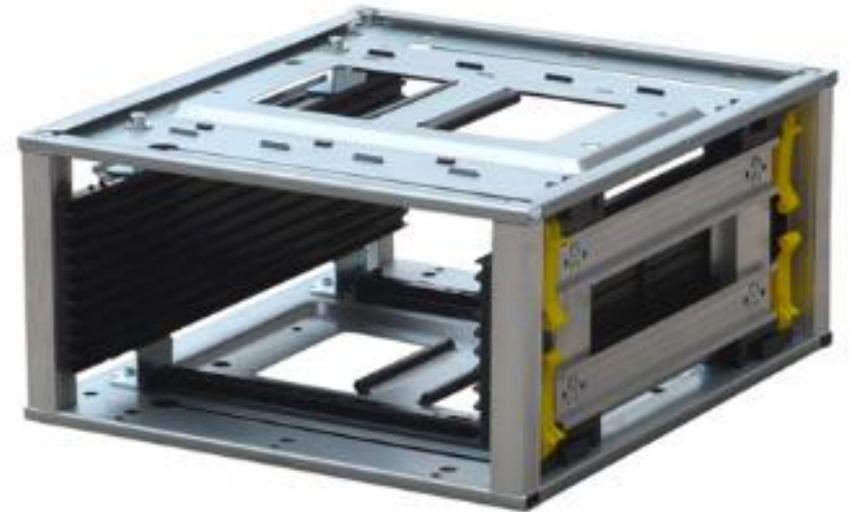
PCB Stored: 10

Surface Resistance

Conductive Type $<1E6\Omega$

Dissipative Type $1E6\Omega\sim 1E11\Omega$

Temperature: $< 120^{\circ}\text{C}$



Notice: The basic material can be replaced by aluminum alloy, and the temperature resistance is up to 350°C

Best After-sales service

- **Worldwide Support**
- **Free Installation/
Training**
- **1 day lead-time (spare
parts)**
- **1 Month customize
solution**



Welcome inquiry

1. Please visit : www.smthelp.com
2. Find us more: <https://www.facebook.com/autoinsertion>
3. Know more our team: <https://cn.linkedin.com/in/smtsupplier>
4. Welcome to our factory in Shenzhen China
5. Google: auto insertion
6. Looking forward to your email: jack@smthelp.com