

Product Introduction:

- Sensor intelligent material rack is a technical innovation of electronic warehouse / SMT production line, automatically recording and ensuring the location of storage materials to prevent human error.
- Seamless access to materials and error prevention.
- Realize the communication with the mounter and complete the function of fastcalling and finding materials.

Features:

- Accurate recording of the position of the material tray Real-time tracking of material position
- Seamless docking ERP&MES
- Power-off Data Preservation
- Human error alarm
- Reduce the time of finding materials artificially
- Docking with the data of the mounter to realize fast material searching
- Anti-dementia,firstin,first out
- Intelligent digital management

Technical Parameter:

Model	SYTSS1400GB	SYTSS1100GB		SYTSS250GB
FORM	FIXED	FIXED		FIXED
DIMENSION	2280*400*1950mm	2280*400*1950mm		2280*400*1950mm
APPLICABLE	16MM FOR 7" REELS	16MM FOR 7" REELS	37MM FOR 13" REELS	37MM FOR 13" REELS
PLATE NUMBER	1400	1000	100	250
LAYER NUMBER	7	5	2	5
SURFACE NUMBER	DOUBLE-SIDED	DOUBLE-SIDED	SINGLE-SIDED	SINGLE-SIDED



*These parameters and pictures are for reference only,so actual products may vary.And the products can be customized.

Features:

- Wi-fi communication
- Large Capacity Lithium battery power supply can work continuously up to 48 hours
- The open communication interface can interface with any system,including chip processor,to realize direct call
- Mes Check Material Status,WMS ERP calculate material inventory
- Easy Mobility,you can use AGV in electronic warehouse and then to the production line,can also be in theproduction line directly prepared sheet
- Intelligent docking of warehouse and production line

Technical Parameter:

Model	SYTSS630YB		SYTSS510YB		SYTSS390YB	
FORM	MOBILE		MOBILE		MOBILE	
DIMENSION	1500*400*1770mm		1500*400*1510mm		1500*400*1510mm	
APPLICABLE	16MM FOR 7" REELS	37MM FOR 13" REELS	16MM FOR 7" REELS	37MM FOR 13" REELS	16MM FOR 7" REELS	37MM FOR 13" REELS
PLATE NUMBER	600	30	480	30	360	30
LAYER NUMBER	5	1	4	1	3	1
SURFACE NUMBER	DOUBLE-SIDED	SINGLE-SIDED	DOUBLE-SIDED	SINGLE-SIDED	DOUBLE-SIDED	SINGLE-SIDED



*These parameters and pictures are for reference only,so actual products may vary.And the products can be customized.

Features:

- Realize one-to-one digital and lean management and control of electronic materials,the whole process of using link can be traced
- Adopt intelligent material warehouse to automatically prepare materials,reduce the workload of material preparation personnel by more than 90%
- Through deep integration with MES system,the whole process is paperless and automatic.
- Material Preparation is strictly in accordance with the principles of tailings priority,first in,first out and so on,so as to reduce the production of dull materials,reduce the cost of materials into the charging and error prevention system,ensure the correct rate of material loading,reduce the loss caused by material loading error
- Digital,information,intelligent management,to open up materials,finished goods circulation information,to ensure the consistency of accounts

Technical Parameter:

Model	GDLJ1400B	GDLJ1100B		GDLJ250B
FORM	FIXED	FIXED		FIXED
DIMENSION	2110*370*1900mm	2110*370*1900mm		2110*370*1900mm
APPLICABLE	16MM FOR 7" REELS	16MM FOR 7" REELS	37MM FOR 13" REELS	37MM FOR 13" REELS
PLATE NUMBER	1400	1000	100	250
LAYER NUMBER	7	5	2	5
SURFACE NUMBER	DOUBLE-SIDED	DOUBLE-SIDED	SINGLE-SIDED	SINGLE-SIDED



*These parameters and pictures are for reference only,so actual products may vary.And the products can be customized.

Features:

- Wi-fi communication.
- Large Capacity Lithium battery power supply can work continuously up to 48 hours
- The open communication interface can interface with any system,including chip processor,to realize direct call.
- Mes Check Material Status,WMS ERP calculate material inventory
- Easy Mobility,you can use AGV in electronic warehouse and then to the production line,can also be in the production line directly prepared sheet
- Intelligent docking of warehouse and production line

Technical Parameter:

Model	YDLJ630B		YDLJ510B		YDLJ390B	
FORM	MOBILE		MOBILE		MOBILE	
DIMENSION	1330*400*1830mm		1330*400*1550mm		1330*400*1550mm	
APPLICABLE	16MM FOR 7" REELS	37MM FOR 13" REELS	16MM FOR 7" REELS	37MM FOR 13" REELS	16MM FOR 7" REELS	37MM FOR 13" REELS
PLATE NUMBER	600	30	480	30	360	30
LAYER NUMBER	5	1	4	1	3	1
SURFACE NUMBER	DOUBLE- SIDED	SINGLE- SIDED	DOUBLE- SIDED	SINGLE- SIDED	DOUBLE- SIDED	SINGLE- SIDED



*These parameters and pictures are for reference only,so actual products may vary.And the products can be customized.

Raw Material Information Collection:



A supplier of raw materials has import QR code,use direct electronic receiving warehousing shelves supporting the WMS system



If not import the raw material supplier QR code,electronic form a complete set of shelves after the WMS system can print qr code,print QR code to the tray,QR code content is as follows:(P/N),(Lot number),(Date),(Quantity),(Vendor)



Scan the QR code receiving complete material reelid data warehousing collect generate inventory list,do not need to staff on the number of points differences do not need to press place arrangement,can be directly loaded.



Electronic material actual control logic

Put in storage

Prepare materials

Take the material

For sending

Basic service functions

- Map management equipment management path planning
- Cluster scheduling data monitoring task allocation
- User management rights management

Warehouse Management System (WMS)

- Inventory management material management
- Backend service warehouse management

IIoT open platform

- Protocol plug-in library device communication driver module
- Third-party software system interface
- Third-party hardware device interface

Central control system (FCS)

- Massive resource management
- Visual control process orchestration
- Business logic execution container

1. Cross-scenario and device/system docking
2. Multiple types of robots working together
3. Pose recognition and adaptation
4. Complex scene operation
5. Obstacle avoidance
6. Precise positioning



Features:

- Box-type warehousing robot can realize intelligent picking, storage and retrieval of boxes, and transport multiple boxes at the same time.
- Flexible customization of robot height, optional double-depth model, efficient use of storage space.
- The efficiency of human-machine collaborative work is increased by 3-4 times, improving the efficiency of manual work per unit time.
- High-speed and stable movement.
- Business flexibility, compatible with multi-size boxes and carton picking.
- Intelligent picking and handling, autonomous picking, intelligent handling, autonomous navigation, autonomous charging, and high positioning accuracy.
- Equipped with many safety functions such as obstacle detection, active obstacle avoidance, anti-collision, alarm and emergency stop.



Features:

- Equipped with multiple 3D multi-line laser radars with superior performance to provide stable and rich 3D environmental information for unmanned forklifts, achieving all-round super perception capabilities
- Suitable for various indoor and outdoor scenes, it can accurately identify pallets and navigate to avoid obstacles day and night, achieving trouble-free operation in all weather and all scenes
- It has high stability, high reliability, high maintainability and high security, and its comprehensive cost advantage is world-leading
- The standard API interface is compatible with a variety of system software, and also supports WMS, WCS, FMS, and intelligent warehouse location monitoring systems to assist in the management of unmanned operations
- There is no need to deploy auxiliary facilities in the environment, and the use cycle is short; it also supports **7*24h unmanned operations** and supports intelligent multi-machine scheduling, greatly improving work efficiency
- Autonomous positioning and navigation
- Intelligent identification and positioning of pallets
- Multiple safety protection warnings
- Sensor integration and motion control
- **Power monitoring and automatic recharging**
- Intelligent multi-machine scheduling
- Automatic fork unloading

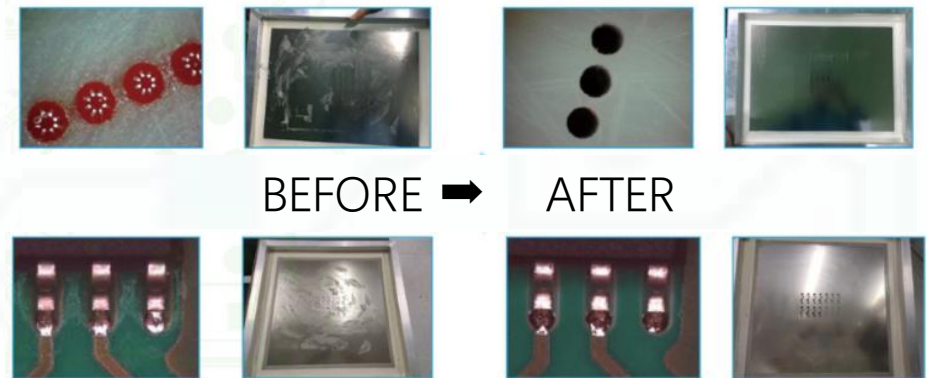


Product Introduction:

- This water-based stencil cleaning machine is mainly used for cleaning SMT stencils in the electronics industry using water-based cleaning liquid. Use the industry's most advanced cleaning process to achieve 100% cleanliness and environmental protection.
- The machine consists of cleaning system, rinsing system, drying system and filtering system. The machine uses electricity and compressed air as energy source. Manually place the stencil into the cleaning room. After setting the cleaning, rinsing, drying and other related parameters on the touch screen, press the start button and the stencil will be automatically cleaned and rinsed, and dry. When the set cleaning process ends, it automatically stops running and resets to implement the next work process. This machine is very convenient for workers to clean the stencil, greatly improving production efficiency and quality. It is a new, high-performance, fully automatic cleaning equipment. The equipment uses water-based liquid cleaning agents and DI water for rinsing, which has no safety hazards and no harm to personnel.

Features:

- High-pressure spray system specially used for cleaning stencils, misprinted boards, PCB/PCBA and other processes with water-based cleaning fluid.
- Double liquid tanks, equipped with heating system, can meet the needs of cleaning, rinsing and hot air drying.
- Process flow: cleaning-chemical isolation-rinsing (open loop/closed loop)-drying.
- Preparation of advanced fully automatic touch screen operation software makes program file saving and use extremely simple.
- The system counting function can automatically accumulate the number of cleaning stencils and the number of cycle filtrations.
- Liquid and pump pressure can be displayed through the panel pressure gauge, providing timely feedback on the operating status of the equipment.
- The spray pressure is monitored by a pressure sensor. If the pressure exceeds the set pressure range, an alarm will occur.



1.Compact Design:

Maximizes workspace with high storage in minimal footprint.

2.MES/ERP Compatibility:

Ensures smooth integration with maAnufacturing systems.

3.Efficiency Boost:

Quick stencil access optimizes production speed.

4.Ample Storage:

Fits 80 steel meshes in a streamlined structure.

5.Easy Retrieval:

Designed for fast and precise mesh location.

Features	Details Information
Dimensions:	1740*770*1800mm
Communication Part:	Seamless docking with MES/ERP
Software:	Improves efficiency and quickly locates steel mesh
Storage Capacity:	Capable of storing 80 steel meshes and 2 layers of 736*736*30mm steel mesh
Benefits:	Reduces the space occupied,and enhances operational efficiency





Product Introduction:

- The fully automatic stencil measuring machine is a device for high-precision measurement and inspection of printing stencils. The main purpose is to inspect the steel mesh incoming materials, conduct quality control on the use and cleaning of the steel mesh, optimize the process research and measurement of the steel mesh openings, and at the same time automatically record and upload the steel mesh incoming materials-acceptance inspection-warehousing-use-cleaning. Cleaning, testing, warehousing, and scrapping to achieve automated management of the entire information chain;
- It makes up for the shortcomings of low manual inspection efficiency, poor quality, inability to manage and trace data, and inability to improve processes, and provides an important reference for the improvement and control of printing processes.



Detection Function:

1. Automatic steel mesh mesh test
Location, size, quantity, accuracy, foreign matter, tension, burrs, damage;
2. Automatic tension test
High-precision tensiometer, automatic multi-position testing;
3. Automatic scraper detection
Optional scraper straightness detection
4. 3D steel mesh thickness measurement
Optional steel mesh wall thickness intuitive Measurement;
5. Steel mesh deformation scanning
Optional scanning and observation of steel mesh surface deformation;
6. PCB plane measurement
Optional detection of PCB pad size, position, etc

Software Function

1. Steel mesh information management system
2. GERBER file comparison function
3. Steel mesh barcode scanning information management, fast barcode program management
4. SPC data statistics and data reporting functions;
5. Automatic offline programming software supports automatic GERBER file programming
6. MES system data docking and uploading, supporting MES information upload and management functions;

Steel mesh incoming material verification:

1. Steel mesh incoming material inspection
2. Steel mesh acceptance control
3. Research on the correctness of steel mesh openings

Steel mesh cleaning inspection:

1. Confirmation of steel mesh cleaning effect
2. Steel mesh hole plugging control
3. Control of changes in steel mesh tension and accuracy

Process research reference:

1. Comparison of stencil accuracy and assessment of stencil opening supplier capabilities
2. Simulate the tin amount in advance and conduct research on the rationality of hole opening.
3. Steel mesh tension, accuracy change control, parameter reference
4. Various detailed and accurate data provide objective reference

Steel Stencil Storage Cabinet GWCCG300
Hardware +communication port+software
Dimension of equipment:1340mm*650mm*2100mm
Seamless docking with MES/ERP ,reduce the space occupied
Improve efficiency and find steel mesh quickly
It can store 300 and 3 layers of 570*570*6mm steel mesh

Steel Stencil Storage Cabinet GWCCG120
Hardware +communication port+software
Dimension of equipment:740mm*770mm*2200mm
Seamless docking with MES/ERP ,reduce the space occupied
Improve efficiency and find steel mesh quickly
It can store 40 and 1 layers of 736*736*30mm steel mesh
It can store 80 and 2 layers of 550*650*60mm steel mesh

Steel Stencil Storage Cabinet GWCCG80
Hardware +communication port+software
Dimension of equipment:1740mm*770mm*1800mm
Seamless docking with MES/ERP ,reduce the space occupied
Improve efficiency and find steel mesh quickly
It can store 80 and 2 layers of 736*736*30 mm steel mesh



*These parameters and pictures are for reference only,so actual products may vary.And the products can be customized.

Specifications:

- Equipment Model:FCG-1500
- Equipment main size:1200*650*1800mm
- Equipment whole adopt stainless steel plate,laser cutting,stamping forming,Argon Arc welding precision welding
- Cabinet door with 5 mm toughened safety glass
- Humidity independent channel control (constant humidity),humidity positive fluctuation is low (<2% RH)
- Temperature and humidity alarm terminal over temperature and over humidity alarm output
- **Dehumidification speed is fast:60% RH ambient humidity,60 minutes up to 10% RH**
- Humidity stable state maintenance time long (intelligent constant operation)
- Temperature and humidity remote bidirectional monitoring (WIFI/GPRS condition realization)
- Energy consumption extremely low,online power 5 watts
- Nitrogen function(optional)



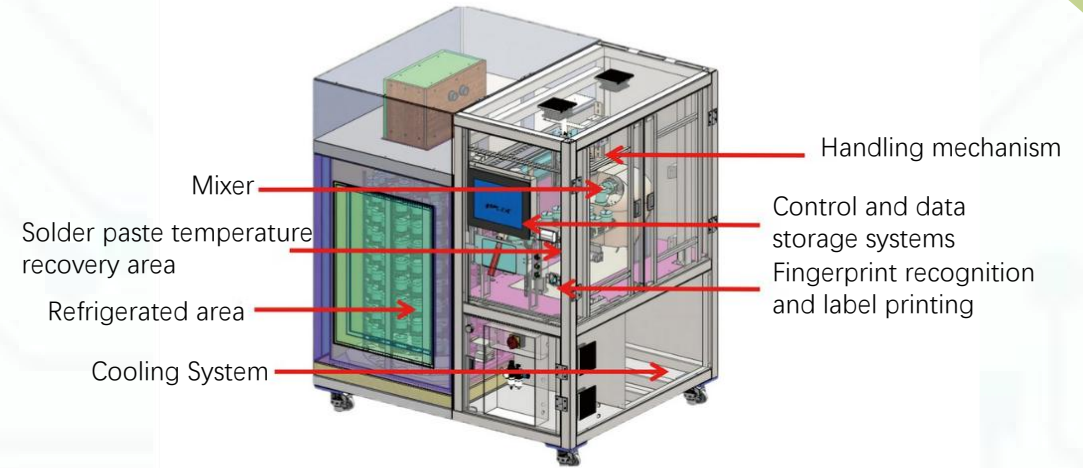
*These parameters and pictures are for reference only,so actual products may vary.And the products can be customized.

Product Introduction:

- The intelligent solder paste/glue storage management cabinet is mainly suitable for SMT related industries. Its main function is to help the SMT production line to store, rewarm, stir, send and receive materials, etc. of solder paste/glue. At the same time, it can monitor the status of solder paste/glue, Intelligent management of type, shelf life and other information can assist SMT production lines to implement high-efficiency and high-quality production methods, thereby achieving the purpose of lean production.
- This equipment is also suitable for intelligent storage of red glue, silver paste, silica gel and other similar raw materials.

Features:

- Automatic refrigerated storage, temperature recovery, mixing and dispensing
- Support online reservation for solder paste/glue recovery and collection
- Solder paste/glue will be automatically scrapped after refrigeration timeout and temperature recovery timeout.
- Connect with customer MES/SFCS system
- Storage capacity: 160 cans, FIFO controlled according to Datecode, supports a variety of solder pastes
- Scan codes for entering, leaving, warming, stirring, and retrieving materials, time for entering, refrigerating, rewarming, mixing, and retrieving materials, storage and retrieval information
- The temperature return zone has a capacity of 17 bottles and supports a variety of solder pastes.
- It can stir 1 or 2 cans of solder paste at the same time, and supports setting different rotation speeds and times for different solder pastes.
- Full data tracking and storage such as refrigeration temperature
- Information management



*These parameters and pictures are for reference only, so actual products may vary. And the products can be customized.

Product Introduction:

- Material goes in the back end and out the front end!
- Material Information and location information binding, to achieve rapid picking
- The front-end electronic label prompt picks goods, picks goods to finish, lights out the system automatically updates the data!

Product Specification:

- Dimensions :1070*500*1040mm



*These parameters and pictures are for reference only, so actual products may vary. And the products can be customized.

Product Introduction:

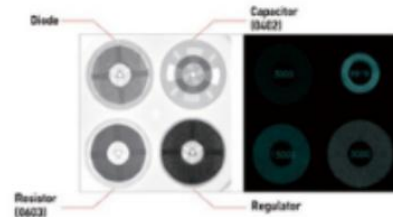
- Rack Model:ZJHJ16
- Equipment Body Size: 2040mm*600mm*1800mm
- 4 layers,each layer 4 storage location,a total of 16 storage location
- Hardware +Communication Port +software
- Connect with the MES/ERP/WMS system seamless docking
- Reduce the SPACE
- Improve efficiency,SEARCH THE FIXTURE QUICKLY



*These parameters and pictures are for reference only,so actual products may vary.And the products can be customized.

Product Specification:

BASIC	Dimensions	0.8M*1.26M*1.92M
	Equipment Weight	800KG
	Voltage	AC110/220V±10%,50/60Hz
	Total Power	Max 800W
	Feeding Method	Manual placement, automatic tray entry and exit.
	Material Foolproof	The tray is fully inductive, automatically identifying and printing information on the tray being picked up.
OTHERS	Counting Time	4 disks at the same time, about 12 seconds
	Counting Accuracy	01005 can reach 99.99%. 0201 or above 100%
	Barcode Scanning	Built-in camera automatic recognition (external barcode scanner)
	Label Printing	Capable of printing material codes and counting results in real time
	Detection Components	Resistors, capacitors, inductors, crystal oscillators, LEDs, diodes, transistors, multi-pin ICs, etc.
	Software	Supports automatic saving of SPC statistics, pictures and results in any format
	Docking System	ERP, MES, etc.
	Radiation Leakage	<1 μSv/Hour



Product Advantages:

- The X-ray source adopts the American VJ closed X-ray tube, which has a long life and is maintenance-free.
- 17-inch ultra-clear flat-panel detector, fast imaging and no distortion.
- **Simultaneously calculating four 7-inch material trays or one 13-17-inch material tray mean does not need to spend 3-5 days to enter data on the material trays in the factory. Users can directly use the algorithm/database with permanent free updates and support**
- There is no need to open the packaging bag to maintain the integrity of the material roll and will not affect the moisture resistance of the material.
- It greatly reduces the counting time and eliminates redundant manpower. It can then assist other personnel to close or change lines, shortening the time for line changes and line changes.
- The smart dispensing machine can print barcode stickers or directly upload to the database.
- **Compared with the traditional method of counting instruments, each operator must have one, which takes up a lot of space. The counting results are still filled in manually, and there may be errors or omissions**
- Meet the trend of Industry 4.0 and SMT production lines, which are smarter, fewer people and more efficient

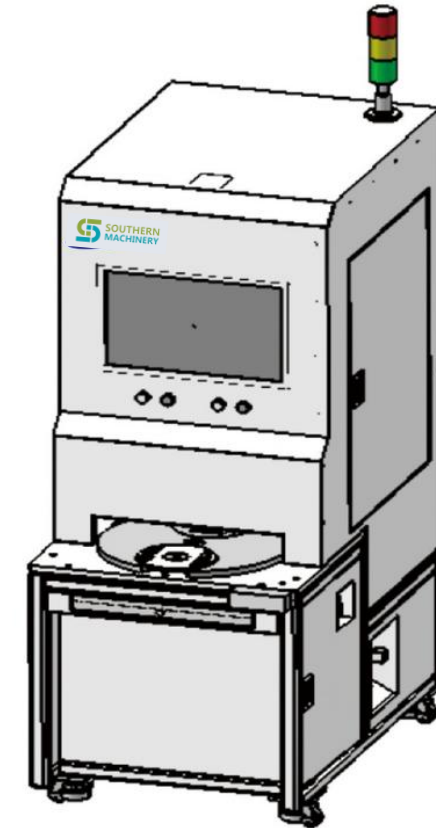
*These parameters and pictures are for reference only, so actual products may vary. And the products can be customized.

www.smothelp.com

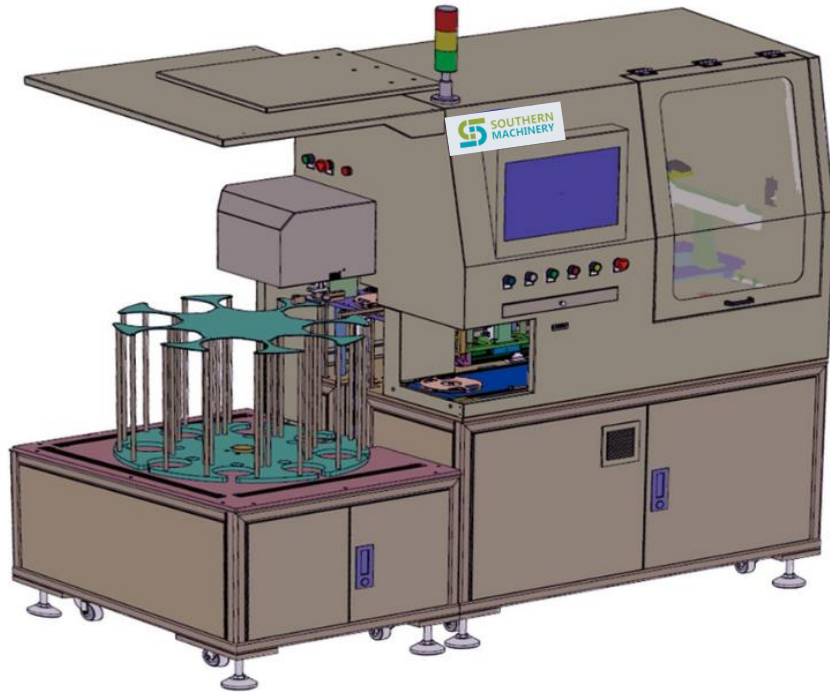
(LableMan 5000-01)7-inch tray semi-automatic labeling machine is a tray semi-automatic labeling machine for the electronic components industry. It is designed and developed to automatically print and attach customer labels (tray labels) for 7-inch tray products in the industry. Solution for manual single tray loading and unloading. The device can complete functions such as original label reading, customer label printing, and customer label attachment within 4.5 seconds, saving operators a lot of valuable time.

Product Specification:

Environment	Applicable Environment Temperature	5 °C~40 °C,humidity 20%~80%
Efficiency	Equipment Efficiency	4.5 seconds/disk (efficiency is obtained when simulating the WMS interface,there will be differences due to different WMS network interfaces)
	UPH	640 plates/hour (80% utilization rate)
	Labelingaccuracy	≤±2mm
	Failurerate	≤0.5%
Functions	Scancode,generate labels,label,and check	Support
Dimensions	length/width/height	700mm/640mm/1030mm
	Weight	200kg
Electrical	Input Voltage	220V
	Rated Power	<2 KW
	Rated Current	5 A
Compressed Air	Compress Air	≥0.5 MPa
	Nominal Consumption	Approx. 6 m³ /h at 0.55 MPa
	Air Connection Diameter	8 mm
	Water and Oil Filtration Grade	Three-Stage Filtration (water removal,oil removal)
Applicable Tray Model	Diameter	180±2mm
	Thickness	10±2mm
Label Specifications	Compatible Length	50-120mm
	Compatible Width	15-50mm
Ribbon Specifications	Compatible Length/Width	≥1016×104(mm),up to 600M
Optional Parts	*Disk label printer	Zebra 300 dpi
	*Outer box printer	Customized according to customer needs
	*Outer printer	Customized according to customer needs
	*Barcode Scanner	Customized according to customer needs
Noise	Noise Level	≤70 dB
*For optional functions,please contact the business for details. Email:info@smthelp.com		



*These parameters and pictures are for reference only,so actual products may vary.And the products can be customized.



Product Specification:

Environment	Applicable Environment Temperature	5 °C~40 °C,humidity 20%~80%
Efficiency	Equipment Efficiency	1.8 seconds/disk (efficiency is obtained when simulating the WMS interface,there will be differences due to different WMS network interfaces)
	UPH	1440 plates/hour (80% utilization rate)
	Labelingaccuracy	≤±1mm
	Failurerate	≤0.5%
Functions	Scancode,generate labels,label,and check	Support
	Compatible with non-original label mode (incoming materials have no original label)	Support
	Compatible with calibration mode (read-only code without labeling)	Support
Dimensions	length/width/height	2020mm/1450mm/1900mm
	Weight	800kg
Electrical	Input Voltage	220V
	Rated Power	<2KW
	Rated Current	10A
Compressed Air	Compress Air	≥0.5 MPa
	Nominal Consumption	Approx. 6 m ³ /h at 0.55 MPa
	Air Connection Diameter	8 mm
	Water and Oil Filtration Grade	Three-Stage Filtration (water removal,oil removal)
Applicable Tray Model	Diameter	180±2mm
	Thickness	10±2mm
Label Specifications	Compatible Length	50-120mm
	Compatible Width	15-50mm
Ribbon Specifications	Compatible Length/Width	≥1016×104(mm),up to 600M
Optional Parts	*Disk label printer	Zebra 300 dpi
	*Outer box printer	Customized according to customer needs
	*Outer printer	Customized according to customer needs
	*Barcode Scanner	Customized according to customer needs
	*Receiving line	Customized according to customer needs
Noise	Noise Level	≤70 dB
*For optional functions,please contact the business for details. Email:info@smthelp.com		

*These parameters and pictures are for reference only,so actual products may vary.And the products can be customized.

Lable Man 1000-03
7-inch tray fully automatic labeling machine is an automatic tray labeling machine for the electronic components industry. It is designed and developed to automatically print and attach customer labels (tray labels, Box labels, box labels) solutions. The equipment can complete functions such as original label reading, customer label printing, customer label affixing, and automatic pallet stacking within 1.8 seconds, which can save operators a lot of valuable time.

Product Specification:

- Hardware+Communication Port+Software
- Feeder Turnover FDZZC100
- Dimensions of equipment:950mm*620mm*1380mm(according to the model of SMT,the flying distance is different)
- Seamless clocking with MES/ERP
- Realize fast line transfer
- Improve efficiency and find materials stored on guns quickly
- Storage 8 mm electronic gun 1002 layers
- Self-contained lithium battery or can be directly charged,continuous power supply 24 hours



*These parameters and pictures are for reference only,so actual products may vary.And the products can be customized.

- **7x24 Worldwide Support**
- **Free Installation/ Training**
- **1 day lead-time (spare parts)**
- **1 Month customize solution**



Welcome Inquiry

Please visit

www.smthelp.com

Find us more

<https://www.facebook.com/autoinsertion>

Know more our team

<https://www.linkedin.com/company/smtmachine>

Welcome to our factory in Shenzhen China

See more machine working video, please Youtube

<https://www.youtube.com/c/Smthelping>

Google

Auto+insertion, to get more information

Looking forward to your email

info@smthelp.com