

SXC-3100

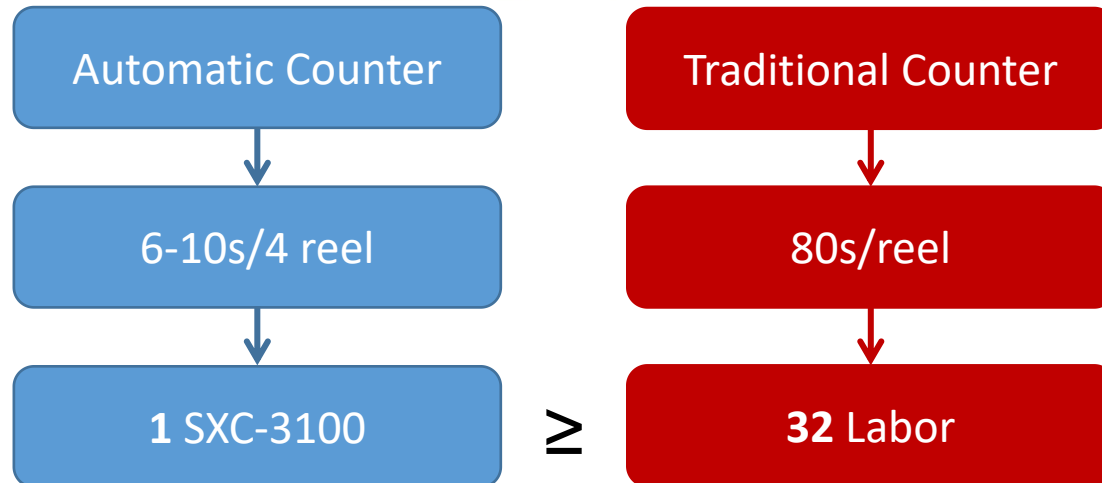
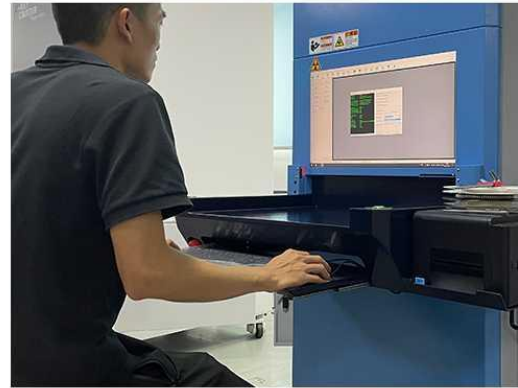
Application areas:

It is mainly used for fast counting of reel materials in SMT industry. It can point 7-15 inch Tape Reel/JEDEC Tray/IC moisture-sensitive bags and other full-item materials. The material types include all resistance-capacitance materials and IC materials. Using X-ray imaging technology, the generated materials are detected and image information is obtained for rapid counting, and the equipment data information is connected with the customer's MES system.

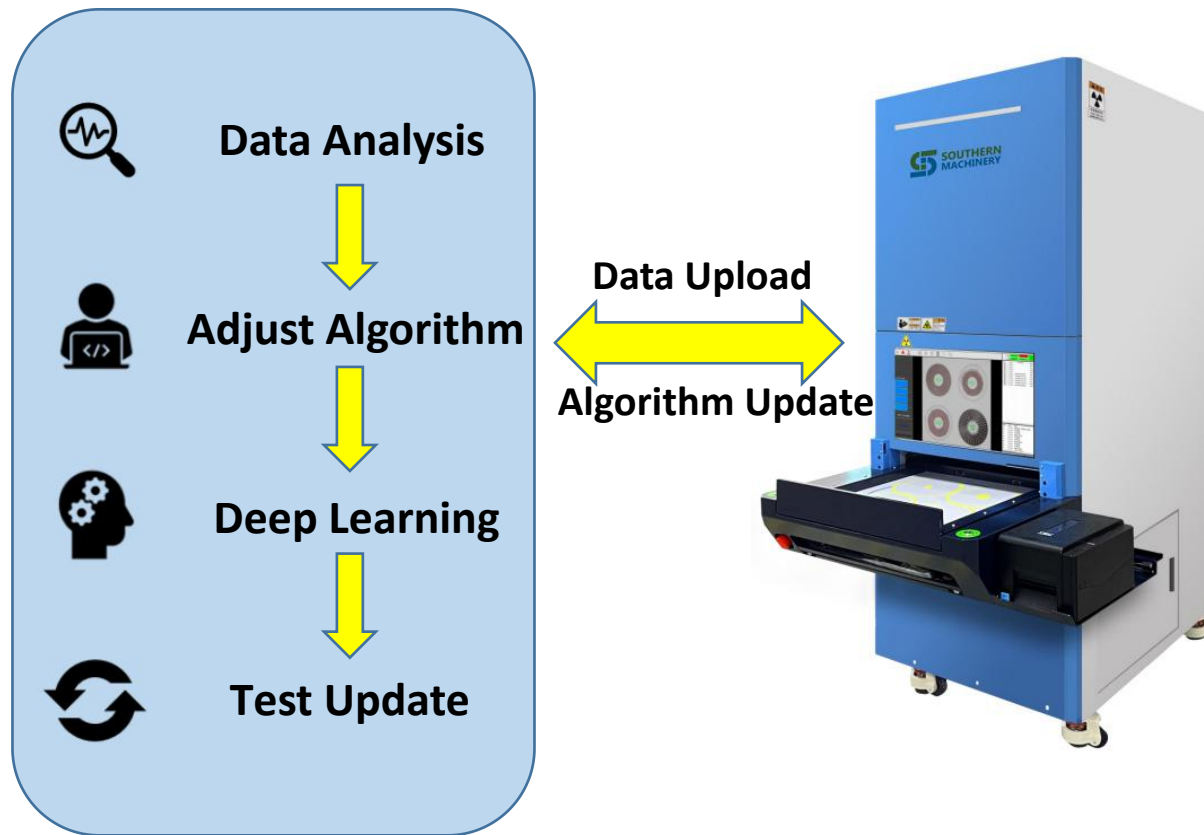
Advantage

- **High Efficiency:** 32 times more efficient than manual labor
- **High Precision:** can reach 99.99% for 01005 component
- **High Security**

1. High Efficiency

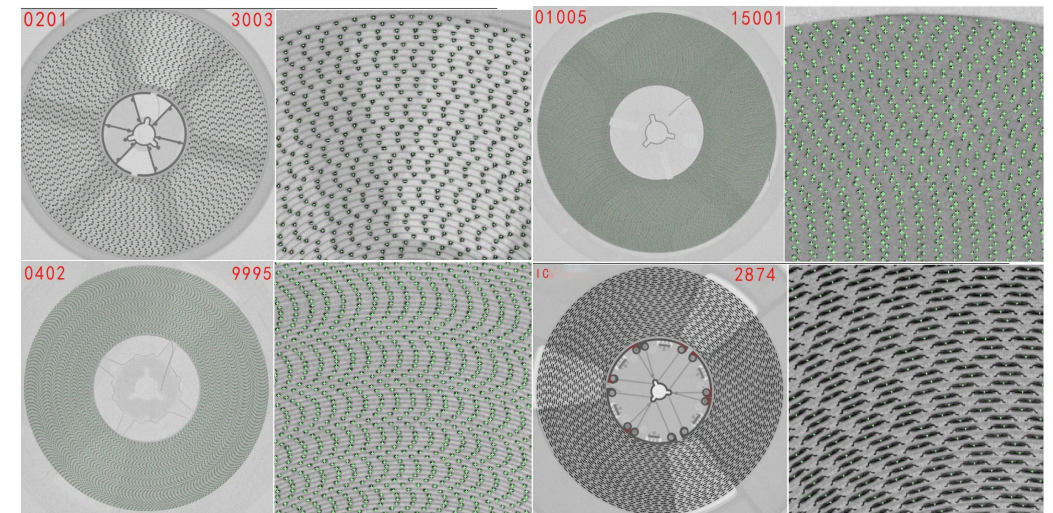


2. High Precision



Using deep learning algorithms, the accuracy rate of equipment ordering is infinitely close to 100%!

	Project	Parameter
Counter	Biggest reel size	17inch
	Maximum height	88mm
	Accuracy	≥99.99%
	Minimum components	010005



Sample Pictures

3. High Security

- **Radiation Leakage:** Radiation leakage dose $1\mu\text{Sv/h}$. (GB15208.1 ~ 2005)
- **Rear Door Safety interlock:** Once the door is opened, the X-ray tube is immediately powered off, and the X-ray cannot be turned on when the door is opened.
- **Anti-pinch Hand:** The safety grating covers the entire drawer, and the drawer stops when a human hand enters it
- **Emergency Button:** Located next to the operating position, press to power off immediately.

Automatic X-Ray Component Counter SXC-3100

Other Parameters		
X-Ray Source	Tube voltage	80kV
	Tube current	700μA
	Focal spot size	30μm
Flat Panel Detector	Effective area	427mm*427mm
	pixel size	139μm
	Resolution	3072*3072
Machine	Dimension	1000mm*1300mm*1920mm
	Weight	850kg
	Power	AC110-220V 50/60HZ
Function	Automatic barcode scanning	Support barcode and QR code
	Print labels	Print the corresponding label
	Record	Automatic counts
	Docking system	Support MES, ERP, WMS, etc.
	Work order number	Work order number record

Best After-sales service

- **Worldwide Support**
- **Free Installation/
Training**
- **1 day lead-time (spare
parts)**
- **1 Month customize
solution**



Welcome inquiry

1. Please visit : www.smthelp.com
2. Find us more: <https://www.facebook.com/autoinsertion>
3. Know more our team: <https://cn.linkedin.com/in/smtsupplier>
4. Welcome to our factory in Shenzhen China
5. Looking forward to your email: jack@smthelp.com