

lead-free dual wave soldering machine

S-WS350B



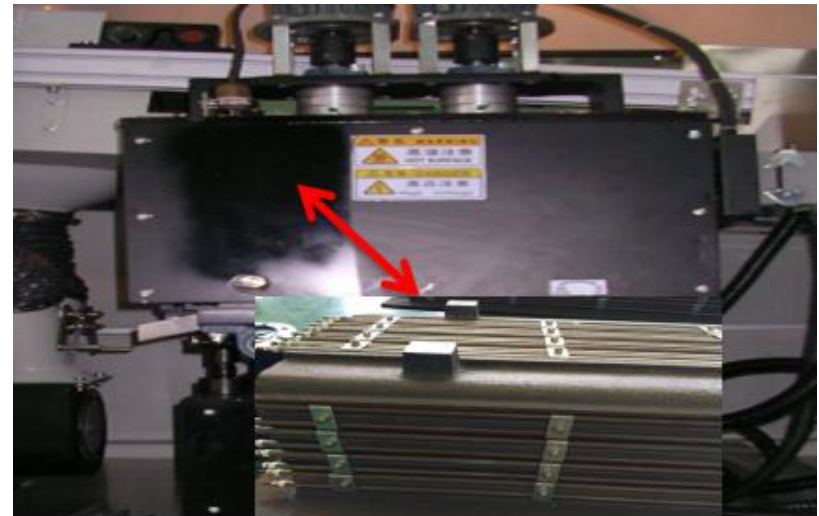
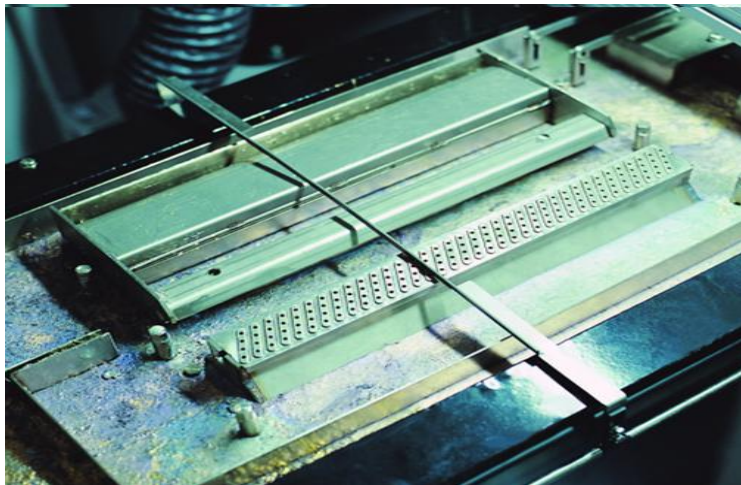
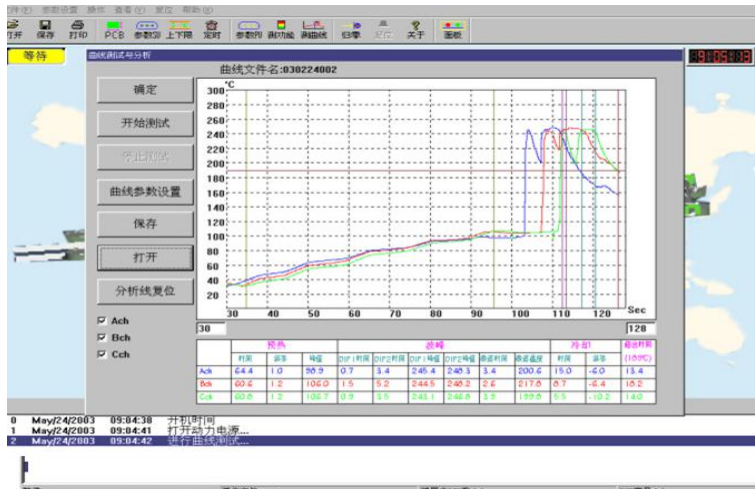
Product features

- Transportation system
- Direct-connected plate-in device, using 25B chain, smooth into the board.
- Special high-strength aluminum alloy transport rails, never deformed.
- Auxiliary guide rail adopts 40mm×80mm thick square pass.
- Central support system to prevent deformation of the guide rail
- Titanium alloy reinforced titanium claw, titanium claw thickness 2.0mm, deformation resistance up to 20kg / cm.
- conveying speed 0 -1.8m / min.
- The drive system uses Delta inverter to control the motor.
- Manual angle adjustment device, angle adjustment range 3 °C-7 °C.
- Intrusion board sensor, providing production quantity record function.

Preheating system

- The preheating tank liner is made of special materials and has high insulation performance.
 - The third section of the hot air preheating zone, the length of the preheating zone is about 1800mm
 - The surface is specially made of transparent tempered glass to monitor the operation of PCB board.
 - Using hot air transport mode, high temperature resistant special motor, long life and low noise.
- Special heating wire is a star-shaped heating element that is wound in a special way, with fast

Details



Specification

Model	S-WS350 B
Control Method	PC + PLC /Auto Add. Tin.(Option)
Conveyor Motor	1P AC220V 90W
Conveyor Speed	300-1800mm/Min
Direction	L-R / R-L
PCB size	50-350 mm
Preheating length	15KW,1800mm Three PID control
Preheating zone & tempreature	3zone ; Room temp~250°C adjustable
Heating method	Infrared (hot air optional)
Cooling method	Centrifugal wind convection cooling knife up and down
Solder type	Lead free solder/common solder
Tin stove power	9kw
Tin amount	Approx.320KG
Tin stove tempreature	Room temp~300°C、Control accuracy $\pm 1-2^{\circ}\text{C}$
Tempreature control	P.I.D+SSR
Machine control method	Siemens PLCcontrol +4.6 touching screen control
Flux capacity	Max5 . 2L
Flux flow	10~100ml/min
Fluxing method	Japan MSC rodless cylinder + Japan Meiji A - 100 Sprayer
Power	3 phase 5lines 380V(Can be suitable for 415V)
Start Power	Max.9kw
Normal operation power	Approx.2.5kw
Dimension size (L*W*H)	3500x1400x1650MM
Weight	Approx.1200kg

Product configuration list

NO	Name	Brand	Quantity
1	PLC	Siemens	1 SET
2	Computer	Dell	1 SET
3	Guide rail	temperature resistant guide rail	1 SET
4	Chain claws	Titanium alloy stamping parts 2.0mm thickening	1 SET
5	Solid State Relays	Jiale	6 PCS
6	Power supply system	Chint	1 SET
7	Power Circuit Breaker	Chint	10 PCS
8	Contactors	Chint	3PCS
9	Intermediate relay	OMRON	10 PCS
10	Switching power supply	MEANWELL	1 PCS
11	Flux pump	SMC	1 PCS
12	Inverter	Taiwan Delta	3 PCS
13	Proximity switch	OMRON	2 PCS
14	Photoelectric sensor	OMRON	1 PCS
15	Transmission motor	OUTA	1 PCS
16	Wave motor,	Tai Chuang	1 PCS
17	Preheating hot air motor	Taiwan Sanyue	1 PCS
18	Nozzle	Meiji, Japan	1 PCS
19	Preheating zone heating	taizhan	3 SET
20	furnace heating plate	taizhan	9 PCS
21	Tin furnace protection temperature control table	OMRON	1 PCS

wave soldering PCB inlet and outlet conveyor



- The discharge of the wave soldering is specially used in the output device connected after dual wave soldering of the PCB
- The angle of the gradient of the front and back end can be adjusted by the screw respectively
- The anti-skidding belt allows stable conveying and the speed is adjustable
- The special belt adopts punching belt with electrical fan adding on it to help cooling the PCB
- Conveyor speed:1~1800mm/min
- Power supply:AC220V 50HZ

Model	Dimension (L*W*H.MM)	Effect PCB size	Weight(KG)
S-Z460	1200*600*1150	50*460	50KG

wave soldering PCB inlet and outlet conveyor



- The double wire rod width adjusting mechanism ensures that the guide rail is parallel to each other.
- Special aluminum guide rail and special stainless steel nylon chain drive are adopted to ensure smooth connection and smooth transportation.
- The transmission is driven by GDP speed motor, and the electronic governor 0-1.8M is stepless.
- The height of transportation can be adjusted by 700-800MM, and the transportation angle can be adjusted 0-15 degrees.
- Conveyor speed:1~1800mm/min
- Power supply:AC220V 50HZ
- Transport height:900mm \pm 20mm
- PCB conveyor speed:0-2m/min

Model	Dimension (L*W*H.MM)	Effect PCB size	Weight(KG)
S-Z460	1000 × 600 × 750	50*460	40KG

Shenzhen Southern Machinery Sales And Service Co., Ltd

1. One-stop Shopping, Providing Quality Smt Peripheral Equipment,
2. Experienced Engineers Provide After-sales Installation & Training Services.
3. Customized Solutions.
4. All Equipment Has Ce Certification, UI Certification.RoHS Certification
5. Provide Sea Freight, Customs Clearance Delivery Service.



OUR CLIENTS

