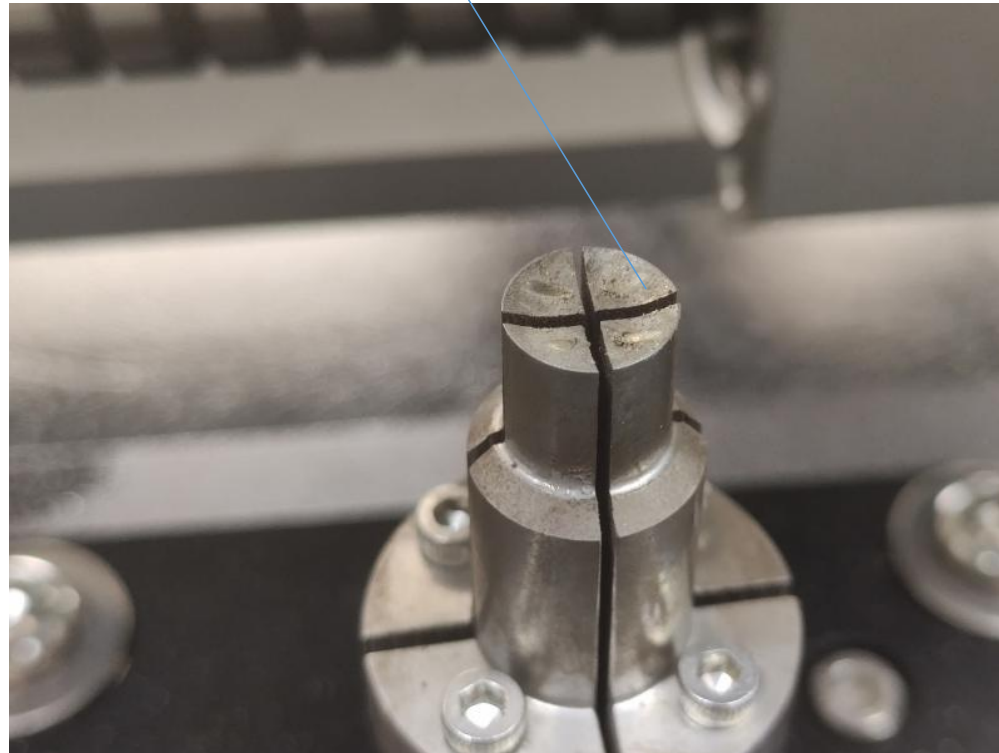


Formed lead

Electronic components do not need to be formed, the machine has an automatic lead forming device



Lead Forming Device

Odd Form Definition

- Odd Component:
- Odd shape through-hole components that cannot be automatically placed using standard through-hole insert machines due to the component's height, shape or weight.



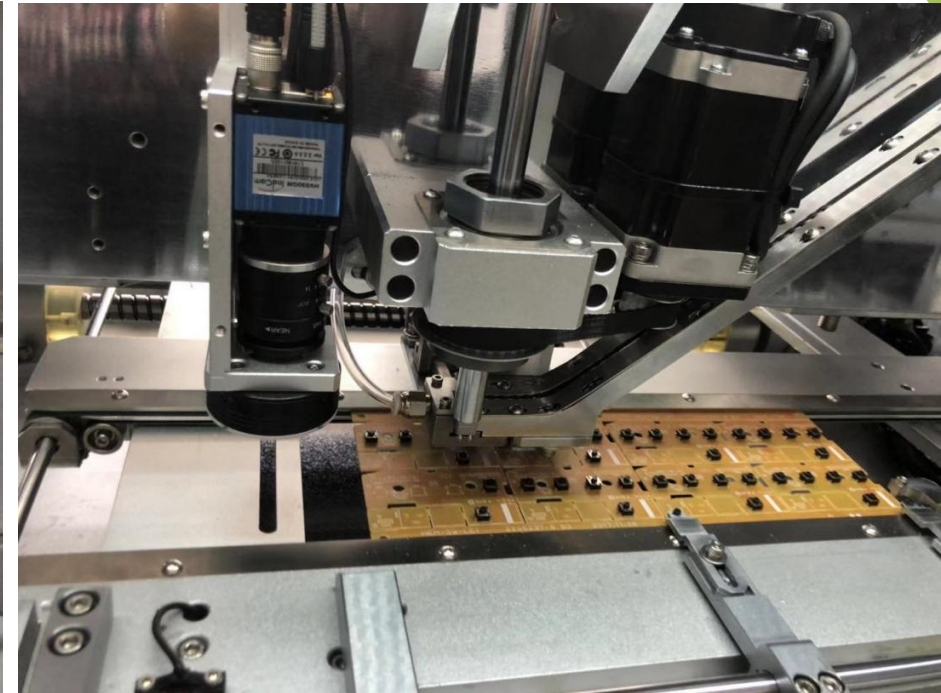
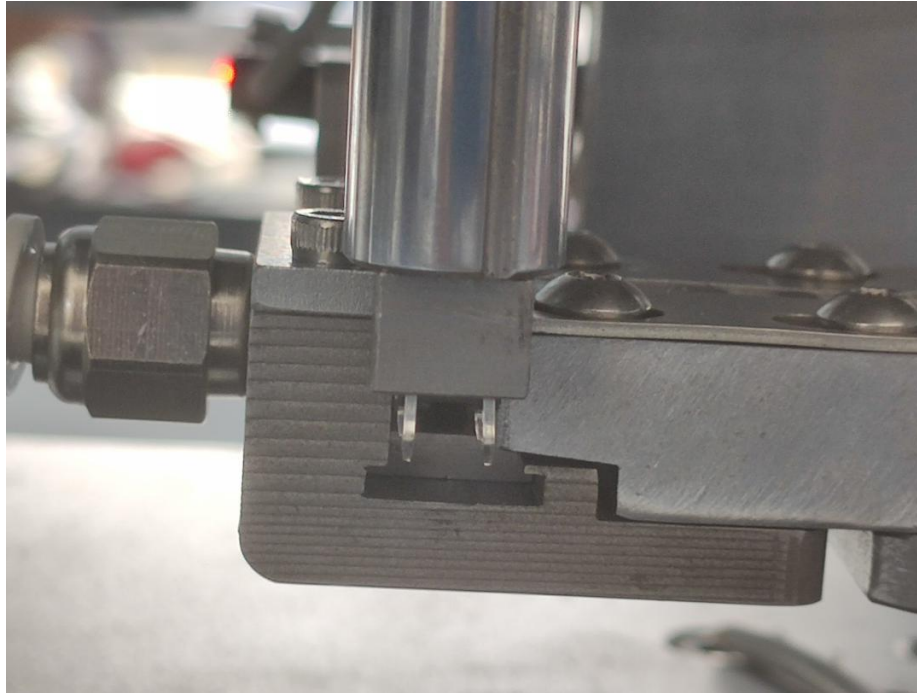
Conveyor
to bear
PCB



Transformer
vibration
plate material

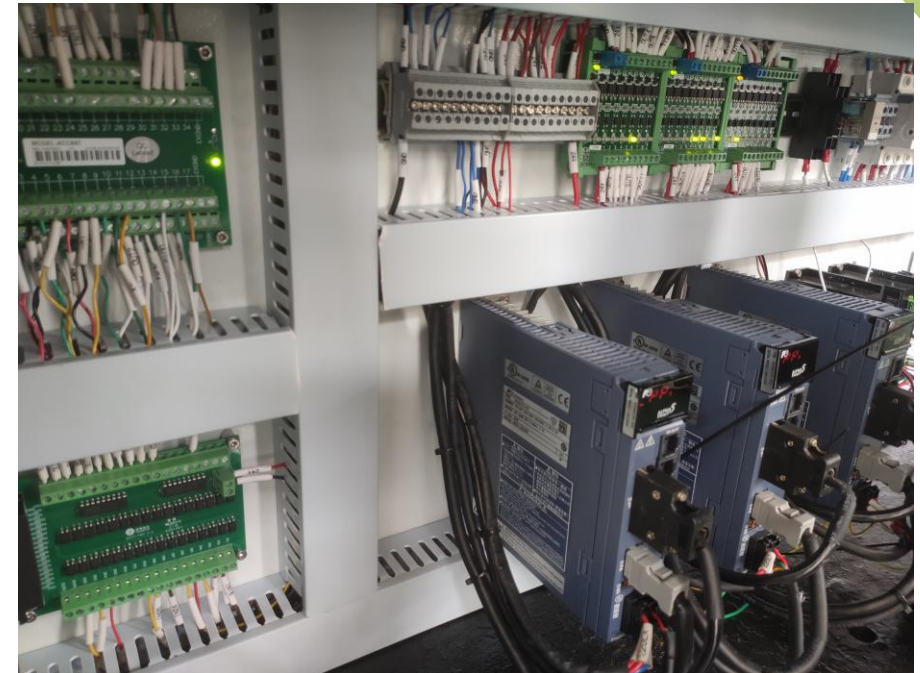
Odd Form Trends

- Drive to reduce defects
- Increase throughput
- Cost/availability of manual labor
- Packages becoming available
- Reduce cost of manufacturing



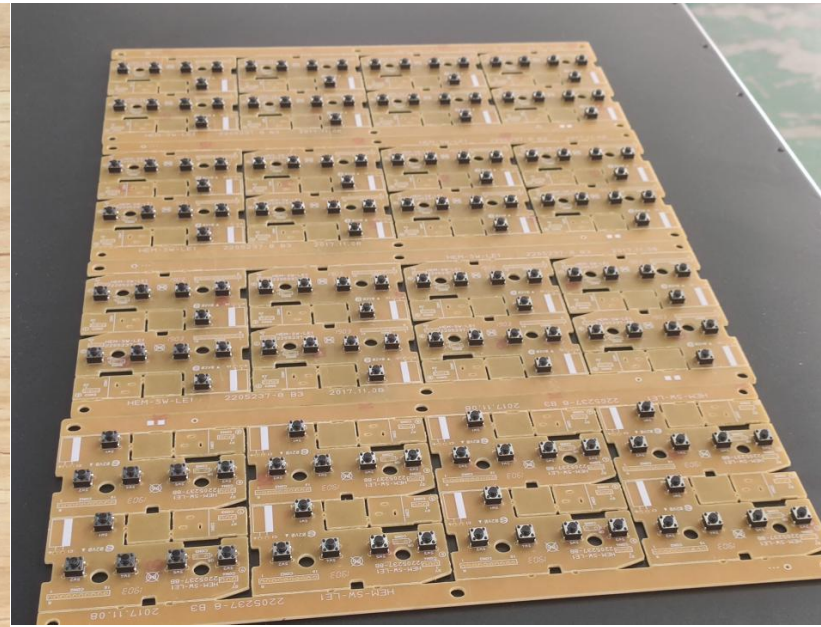
S-7000D Tact Switch Automatic insertion machine

- Odd form factor component handling for PCB assembly
- Market Challenges
 - Irregular packaging
 - Conversion from Hand assembly
 - Competing in low cost markets
 - No industry standards governing assembly process
 - Large / heavy components
 - High force requirements
- S-7000D Advantage
 - Most flexible head available on the market
 - Vision component inspection enables use in Pin in Paste applications
 - Vision component inspection finds quality problems before insertion
 - Data driven programming and component database bridges the gap between custom automation and Surface Mount assembly machines

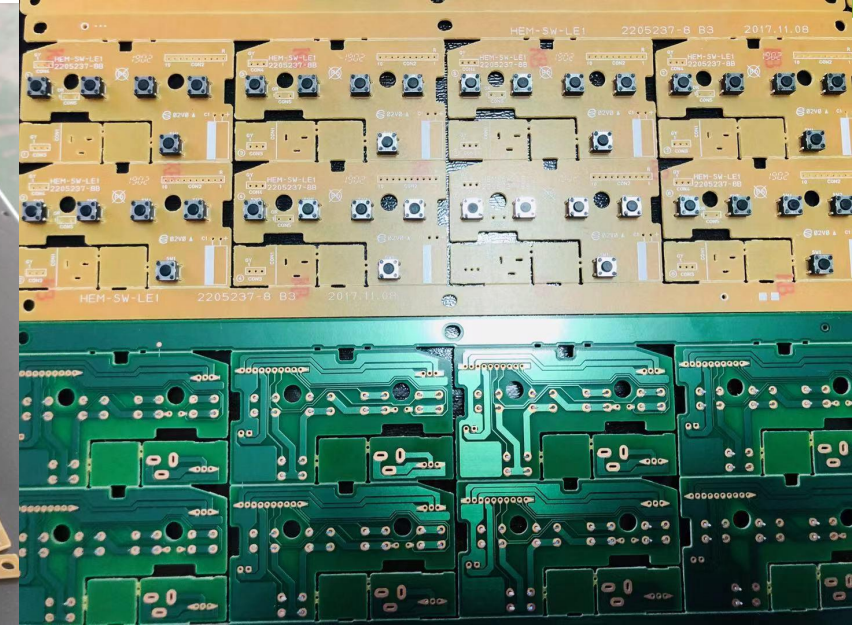




straight lead components

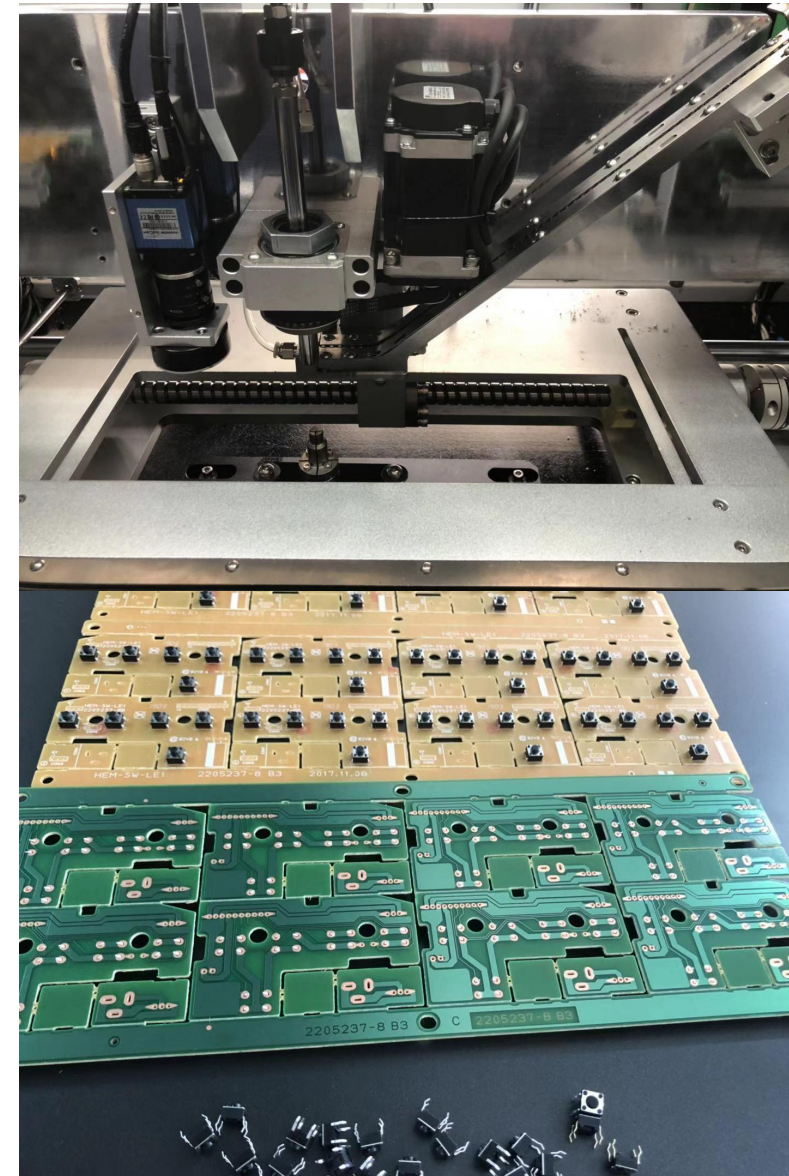


Finished PCB



Both sides

- Highest Throughput
 - 8,000 CPH Spec Speed
- Insertion Head
 - Single Head to Four Head (Optional)
- Lowers Cost of Ownership
 - Low Energy costs. Power supply: 2.0KVA
 - Minimal preventative maintenance required.
- RMB2,000/Month/Unit
- Easy to Use User Interface
 - Easy operation, use Excel program and USB input.
 - Off-line programming available
 - Components available: Tact Switch, Outer diameter: 6.0×6.0-10×10 、 Handle length ≤3.5mm.



- Odd form factor component handling for PCB assembly
- Market Challenges
 - Irregular packaging
 - Conversion from Hand assembly
 - Competing in low cost markets
 - No industry standards governing assembly process
 - Large / heavy components
 - High force requirements
- S7000 Advantage
 - Most flexible head available on the market
 - Vision component inspection enables use in Pin in Paste applications
 - Vision component inspection finds quality problems before insertion
 - Data driven programming and component database bridges the gap between custom automation and Surface Mount assembly machines



A switch with a suction head

High Version Conveyor Series

Standard features

Pannasonic PLC Program control.

Start / Stop push button.

Anti-static conveyor belt.

Centre PCB stop position.

Easy way of belt replacement.

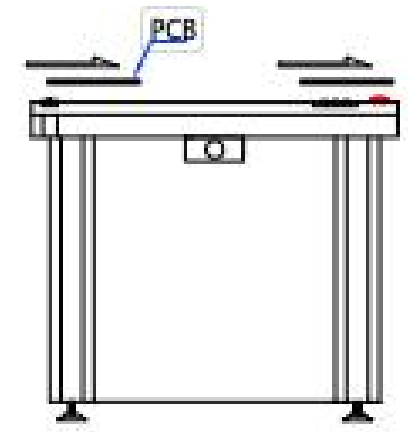
Inspect and by-pass mode selectable.

Sturdy structure offers reliable operation in demanding production.

PCB precise stopping in position.

Smooth and parallel width adjustment.(lead screw)

SMEMA compatible.



Model	Dimension (L*W*H.MM)	Effection PCB size	Weight(KG)
S-H50	500X745X900	50X50-445X407	68KG
S-H100	1000X745X900	50X50-445X407	85KG

SMT PCB Magazine Loader



- This equipment is used SMT circuit board production line operating upper and lower plates.
- Magazine quantity: upper 1pc, bottom 1pc.
- Tank Replacement time: about 30 seconds or a user specified
- step select: 10,20,30,40 mm or user
- spec. 110V or 220V, single phase max 250VA.
- Barometric pressure from 4-6 bar, up to 10/min
- Flexible platform to suit standard magazines.
Regulated pressure on attached pneumatic pusher.
Pusher position adjustable to centre of the magazine.
User friendly "soft touch" LED membrane controlpanel.

Model	Dimension (L*W*H.MM)	Effection PCB size	Weight(KG)	Rack size(L*W*H.MM)
SLD250	1330*765*1250	50*50-330*250	140KG	355*320*563
SLD330	1650*845*1250	50*50-445*330	200KG	460*400*563
SLD390	1800*909*1250	50*50-530*390	240KG	535*460*563
SLD460	1800*970*1250	50x50-530x460	300KG	535*530*563

SMT PCB Magazine Loader



- This equipment is used SMT circuit board production line operating upper and lower plates.
- Magazine quantity: upper 1pc, bottom 1pc.
- Tank Replacement time: about 30 seconds or a user specified
- step select: 10,20,30,40 mm or user
- spec. 110V or 220V, single phase max 250VA.
- Barometric pressure from 4-6 bar, up to 10/min
- Flexible platform to suit standard magazines.
Regulated pressure on attached pneumatic pusher.
Pusher position adjustable to centre of the magazine.
User friendly "soft touch" LED membrane controlpanel.

Model	Dimension (L*W*H.MM)	Effect PCB size	Weight(KG)	Rack size(L*W*H.MM)
SUL250	1730*765*1250	50*50-330*250	160KG	355*320*563
SUL330	2065*845*1250	50*50-445*330	220KG	460*400*563
SUL390	2660*909*1250	50*50-530*390	280KG	535*460*563
SUL460	2660*970*1250	50x50-530x460	320KG	535*530*563

WELCOME INQUIRY

Please visit

www.smthelp.com

Find us more

<https://www.facebook.com/autoinsertion>

Know more our team

<https://cn.linkedin.com/in/smtsupplier>

Welcome to our factory in Shenzhen China

See more machine working video, please Youtube [Auto Insertion](#)

Google

Auto+insertion, to get more informations

Looking forward to your email

info@smthelp.com