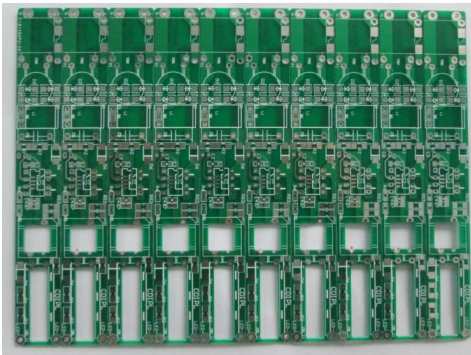
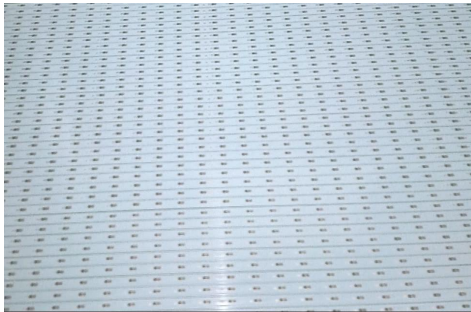
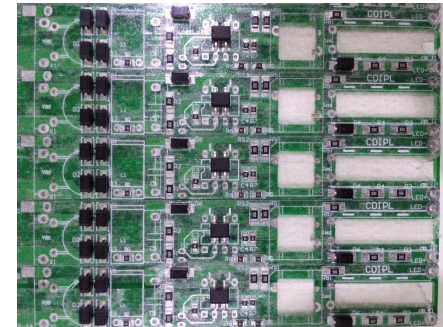
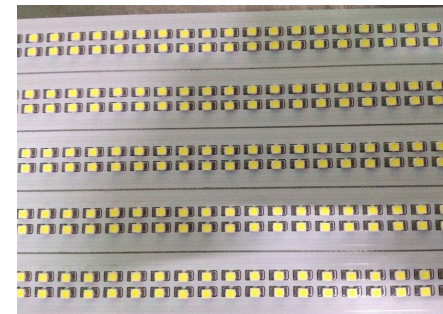


Are you facing the following problems:

1. Don't know how to build one new LED Driver/Tube Lights factory?
2. Recruitment difficulty season?
3. Low production efficiency?
4. The labor cost is on the increase?



Bare PCB



PCBA

SMT Line for LED Lighting PCB Assembly

- SP-1200 Semi-Auto Screen Printer
- S-530 Automatic LED Mounter
- S-350E Conveyor
- S-6600 Reflow Oven
- S-350E Conveyor



Semi-Auto Screen Printer 1200mm → Automatic LED Mounter 2000mm → Conveyor 1500mm → Reflow Oven 3000mm → Conveyor 1500mm

Whole Line length: 1.2M → 2M → 1.5M → 3M → 1.5M = 9.2M (Total Length)

1. Semi-Auto Screen Printer SP-1200



- Adopts SMC rail and Panasonic speed control motor drive steel squeegee base to ensure printing steady
- The squeegee base can be uplifted 45° , easy to disassemble the squeegee and clean the screen
- The printing base can be move front and rear and fixed to ensure perfect printing effect
- The printing table has groove and location pin, suited for single and double-sided board production
 - Adopts X.Y.Z axes to align the board by using arm (screen stencil) and printing table
 - Microcomputer control, equipped with LCD, user friendly interference and with counting function.

SPECIFICATIONS

PCB Size	350 X 1200mm
Printing Area	320 X 1270mm
PCB Fixed System	PCB Outer Or Pin Positioning
Frame Size	370X1320mm
Adjusting for table	Front
Printing Accuracy	±0.05mm
Repeating Accuracy	±0.02mm
PCB Thickness	0.2-2.0mm
Air Source	4-6kg
Power Supply	Single Phase 220V, 50/60Hz 100W
Dimension	1200*900*1650mm (L*W*H)
Net Weight	250KG

2. S-530 Automatic LED Mounter



Actual Speed: 45000 CPH

PCB Length: 1200mm

Specifications:

1. High-Accuracy

Non-stop Recognition by Flying Vision System

Each of the eight pick-up heads is equipped with a flying vision camera to guarantee high accuracy.

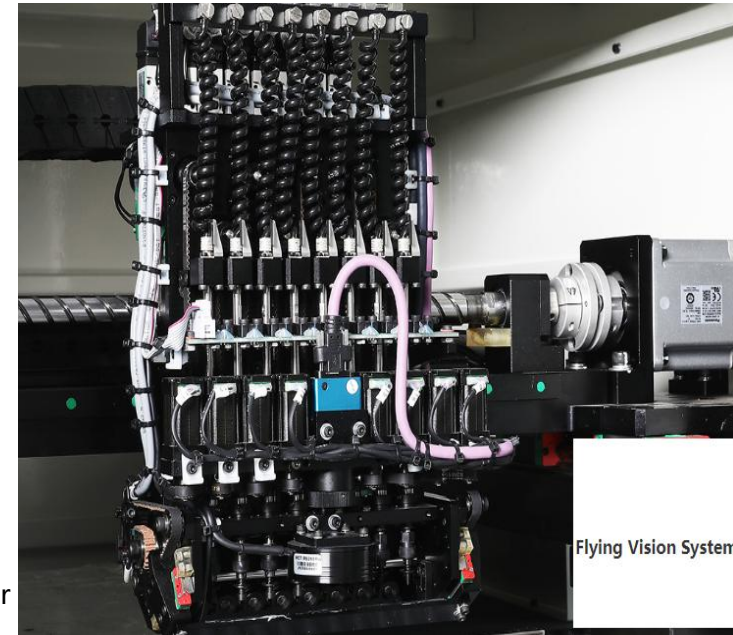
Refers to the function recognizing parts without stopping during movement after part pickup using own 'On-the-Fly' image recognition technology. It maximizes part placement speed by making the recognition time zero.

2. High Speed LED Production

Maximum placement speed reaching 0.08s/chip

Each mounting head has its own Z-direction step-servo motor, which is designed for vertical motion.

With a SMEMA-compatible inline conveyor for line automation.



More:

I . Reinforced applicability to long board: Allows placement of LEDs on large LED lighting PCBs with a maximum length of 1,200mm.

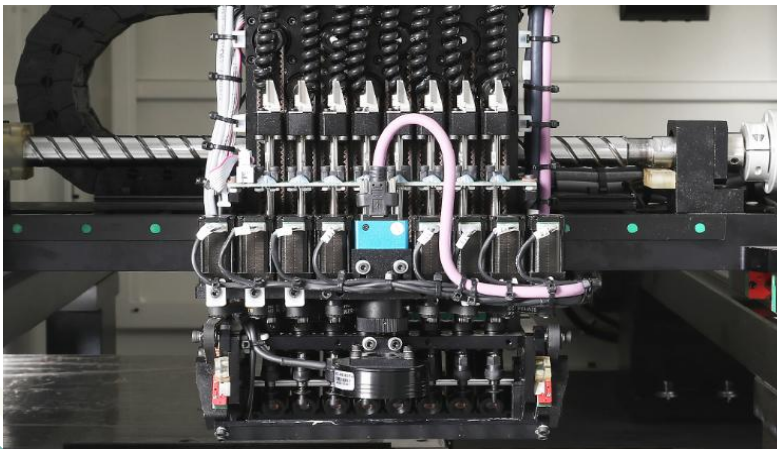
II . Places SMD components from 0603 to 7474, including resistors, capacitors, connectors, standard and irregularly shaped LEDs. Also for DOB high components.

III. Suitable for all LED lighting products, including flexible PCB strip, circular LED light bulb boards and even irregularly shaped boards, LED driver board, DOB products.

IV. Electric feeders for stable and long-life feeding components.

V . Excellent quality hardware support to ensure placement repeatability and precision.

VI. Windows base software simplifies production.



Technical Parameters

Alignment		Flying Vision
Number of Spindles		8 Spindles x 1 Gantry
Placement Rate	Flying Vision	Chip 2835 42000CPH (Optimum)
Placement Accuracy	Chip	±0.05mm
Component Range	Flying Vision	0603~5050~7474, high-power LED, IC<10mm
	Max Height	H=16mm (can handle max. 18mm without vision alignment)
Board Dimension (mm)	Maximum	1,200(L) x 400(W)
Board Handling Method		Inline Conveyor
Tape Feeder	Feeder Type	Electric Feeder
	Feeder Capacity	20 (standard 12mm)
	Optional	8mm, 12mm, 16mm. 24mm, 32mm
Utility	Power	AC220±20V (50/60Hz, 1 Phase)
		Max 2.8KW
	Air Consumption	0.5MPa (5.1kgf/cm2) 10L/min
	Vacuum Supply	Built-in Vacuum Pump
Mass		Approx.1,560KG
External Dimension(mm)		2,000(L) x 1,250(D) x 1,400(H)

3. SMT Buffer Conveyor S-350E*2 unit



- PCB Conveyor rail length: 1500mm
- Rail Fix mode: Front Fix (Option: Rear fix)
- PCB Conveyor direction: L→R (Or R→L)
- Control System: Relay Board (2 sensor without stopper)
- PCB Conveyor Height: 900 ± 20 mm
- PCB Conveyor Width: 20-400mm
- PCB Conveyor Speed: 0-2M/min
- Available to communications with other devices by SMEMA signal plug
- Exact thread shaft structure to ensure the adjustment of rail Width parallel
- Used durable Anti-static belt with strengthen Aluminum Alloy rail to be reliable
- Power Consumption: Approx. 40W
- Power Supply: Single Phase 220V, 50HZ
- Weight: Approx. 70kg

4. Lead-Free Reflow Oven S-6600

FEATURES

- Complete for the lead free process
- Adopt instrument control System and closed loop control for heating source of each zone.
- Temperature control adopt circulation hot air heating mode for each zone;
- Closed loop control for conveyor system, can go along steadily stepless rate-adjusting;
- With over heating alarm function;



Dimension (L*W*H)mm : 3600x720x1250

Standard Color: Computer Grey

Weight: Approx.420KG

Number Of Heating Zones: Up6/Bottom6

Length Of Heating Zones: 2300mm

Number of Cooling Zones: 1

Length of Cooling Zones: 1

Exhaust Volume 10M³/minx2: Exhausts

Control System: Instruments

Computer: No (Optional)

Siemens PLC: Standard

Electric Supply Required: 3 phase,380V 50/60Hz

Power For Warm Up:15KW

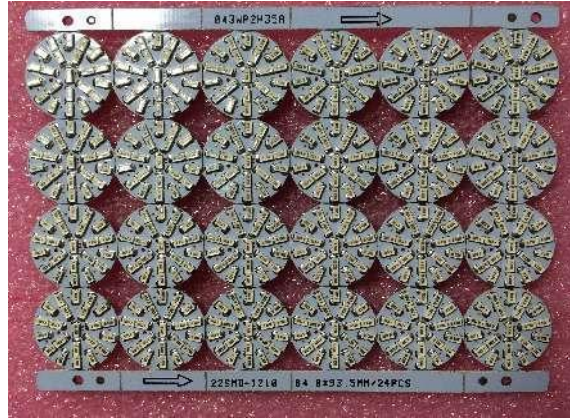
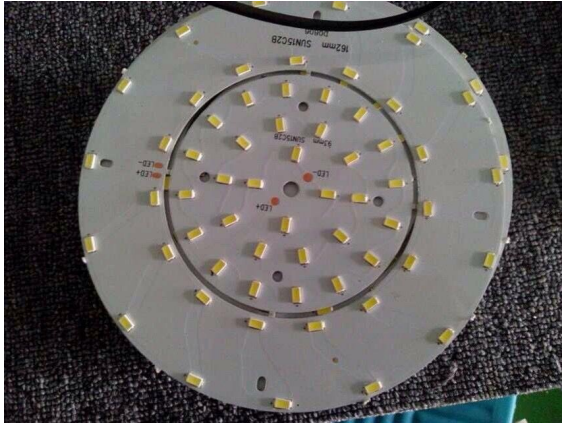
Power Consumption: 5KW

Warming Time: Approx.20 minute

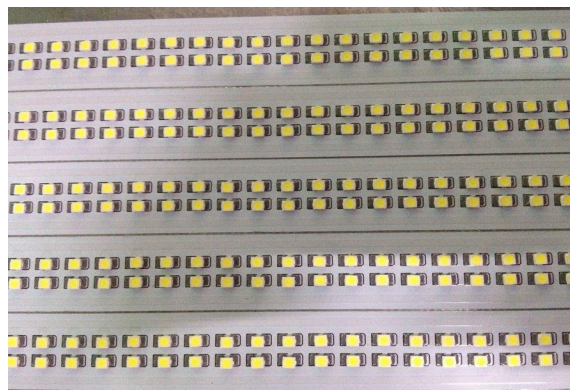
Temp. Setting Range: Room Temp.-- 300°C

Cooling Method: Air fan

Actual Throughput



LED Bulb:
45000 CPH
4500 Bulbs / Hour
(10 chips/Bulb)



LED Tube:
45000 CPH
750 tubes / Hour
(60 chips/tube)

ROI < 5 Months

SMT Assembly earning \$0.001/chip

Line throughput : 45000 Chips Per Hour

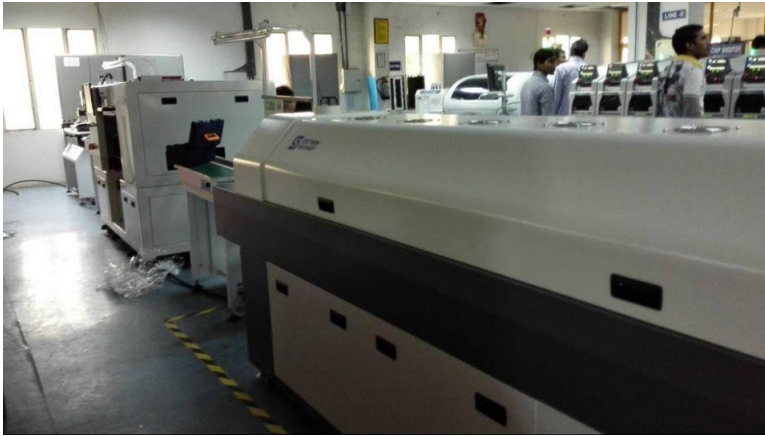
Profit(45000CPHx20Hx30D): **\$27K** per month

One line equipments Investment: **\$80K**

Monthly cost(consumption+salary): **\$10K**



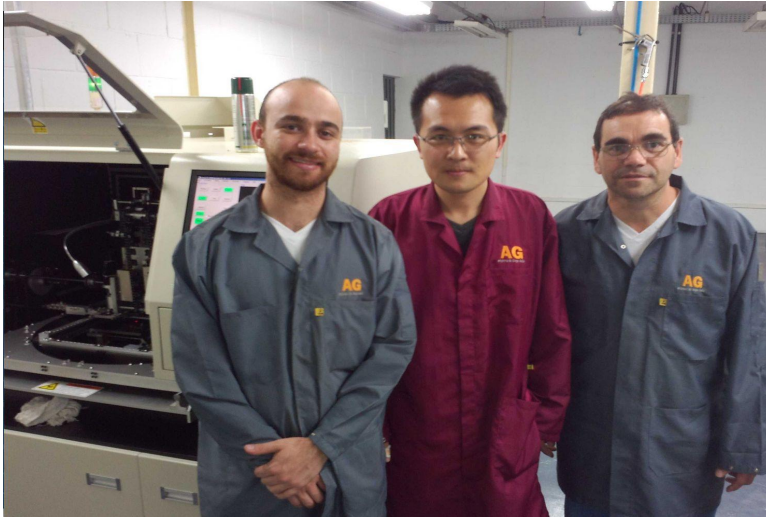
Installing Whole SMT Line in India Factory



Installing Machines in India

The customer's first PCB
produced on our SMT machine





1. On site installation and training
2. Machine Factory training
3. LED SMT process training
4. 7x24 online service support



Welcome inquiry

- 1, Please visit : www.smthelp.com
- 2, Find us more: <https://www.facebook.com/autoinsertion>
- 3, Know more our team: <https://cn.linkedin.com/in/smtsupplier>
- 4, Welcome to our factory in Shenzhen China
- 5, Google: Auto+Insertion
- 6, See machine working video: youtube - Auto Insertion
- 7, Looking forward to your email: info@smthelp.com