

S-4000 Axial Inserter



Through Hole Products



Axial/Sequencer S-4000

- Expandable from 20 stations to 100 stations (10 Station Increments)
- Speeds up to 16,000/hour
- Low maintenance feeder technology
- Dual part detection – two parts in same chain slot.
- Insertion Directions: 0° ,90° ,180° ,270°
- Jumper Wire Feeder Support

S-4000 – In Detail

- - 20,000 CPH – Spec Speed
 - 13,000 CPH – “Real” Throughput Speed
- - Expandable from 20 inputs up to 100 inputs
 - Jumper Wire Feeder Support, insert JW directly directly without sequencer again to save 1/3 JW.
 - Low maintenance dispenser heads
- - Insertion Directions: 0° ,90° ,180° ,270°
- - Components require: 52mm Taped axial leads;
- - Component lead span: 5.0mm
- - Components available: Capacitor, Transistor, Diode, Resistance, Fuse, Taped axial leads components
 - Lowers Cost of Ownership
 - Low Energy costs.
 - Easy to Use User Interface
 - Easy operation, use Excel program and USB input.
 - Off-line programming available

PCB Size: Max: 450MM*450MM

Min:50MM*50MM

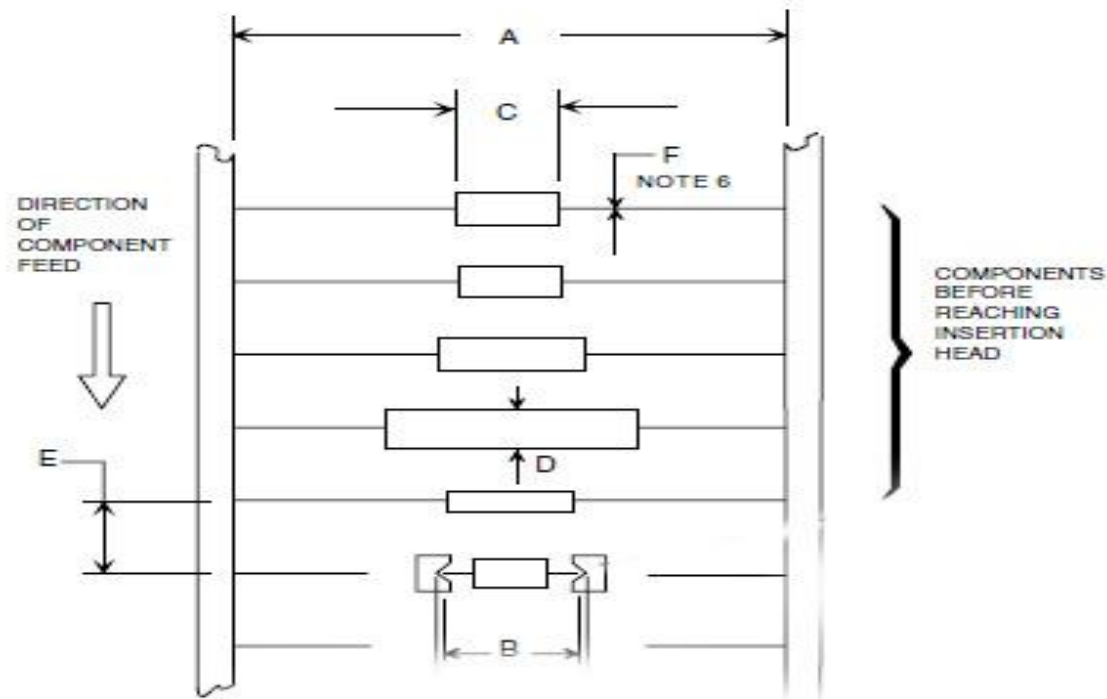
Neighbor components parallel distance $E(\text{pitch})=5.0\text{mm}$

Tape width: 52mm

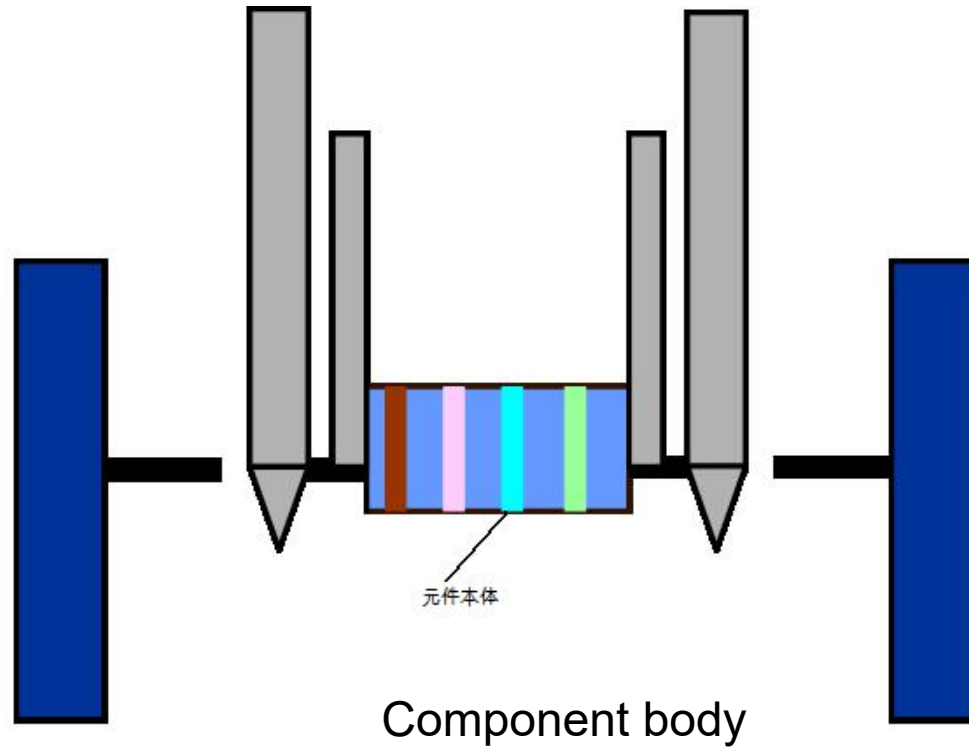
Max Component Body Length : $C=16\text{mm}$, Resistor:1/8W-2W

Axial Lead Component Kind : Diode, Resistor, Capacitor and so on.

Max body diameter $D=5.0\text{mm}$

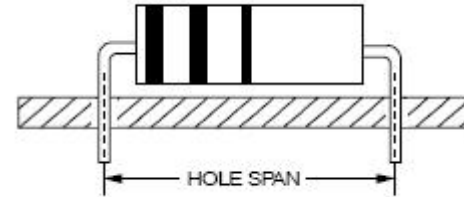


Insertion head work principal

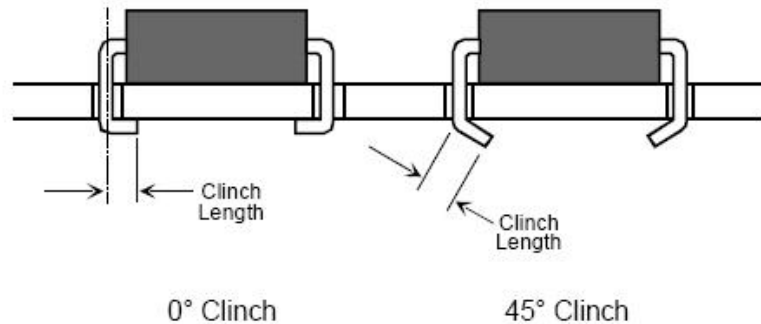


Hole Span: 5~20mm

JW Span: 5~30mm

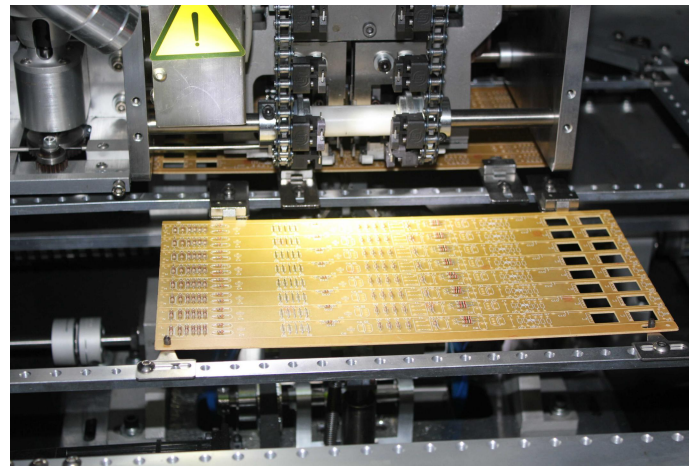
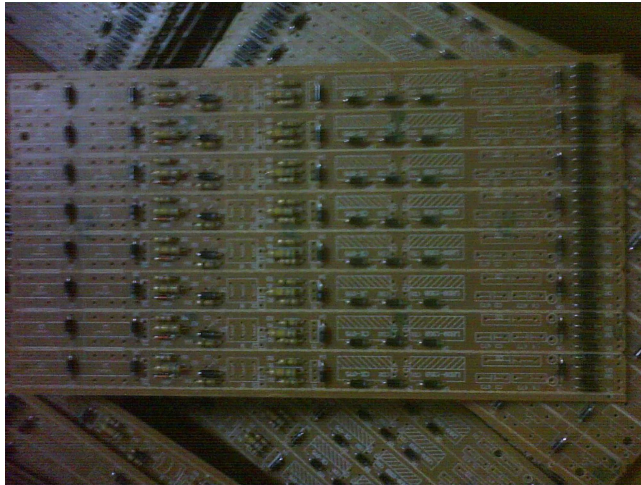
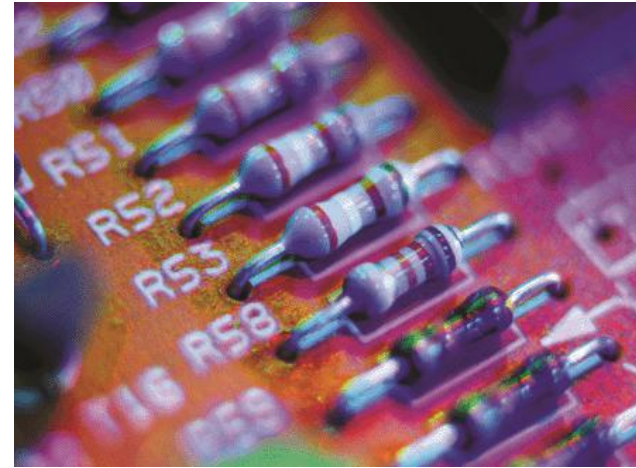
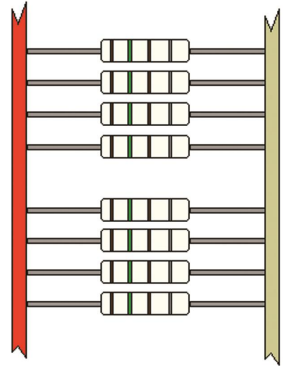


Hole Diameter = Lead Diameter + 0.48mm
 $\pm 0.08\text{mm}$.
 (0.019") (0.003")



Clinch lead angle is adjustable in a range (0° - 45°). Clinch lead length is adjustable from 1.28mm (0.050") to 1.80mm (0.071") and is measured from the center of the insertion hole to the end of the lead.

Axial S-4000 Insertion PCB

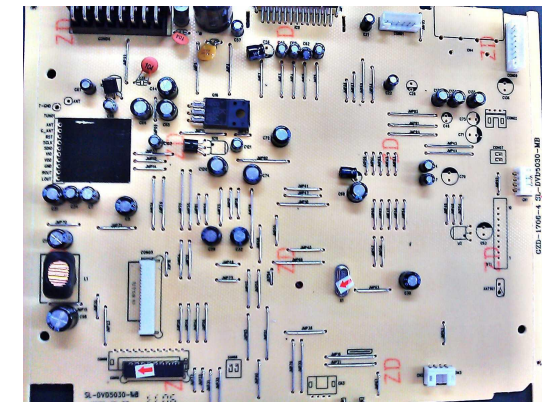


The ideal Solution for any market

- **Electrical industries appliances:** Air conditioner, Television, Microwave, Electric cooker, Electric kettle, Induction cooker etc.

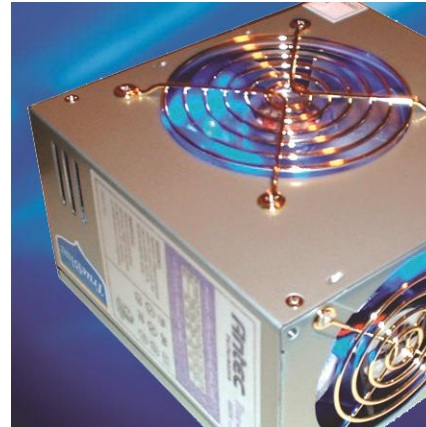


- **Vehicle industries application:** Vehicle power supply, Vehicle light, Car audio etc.



The ideal Solution for any market

- **Power supply appliance:** Vehicle power supply, Energy saving power supply, Ballast etc.



Successful Case

