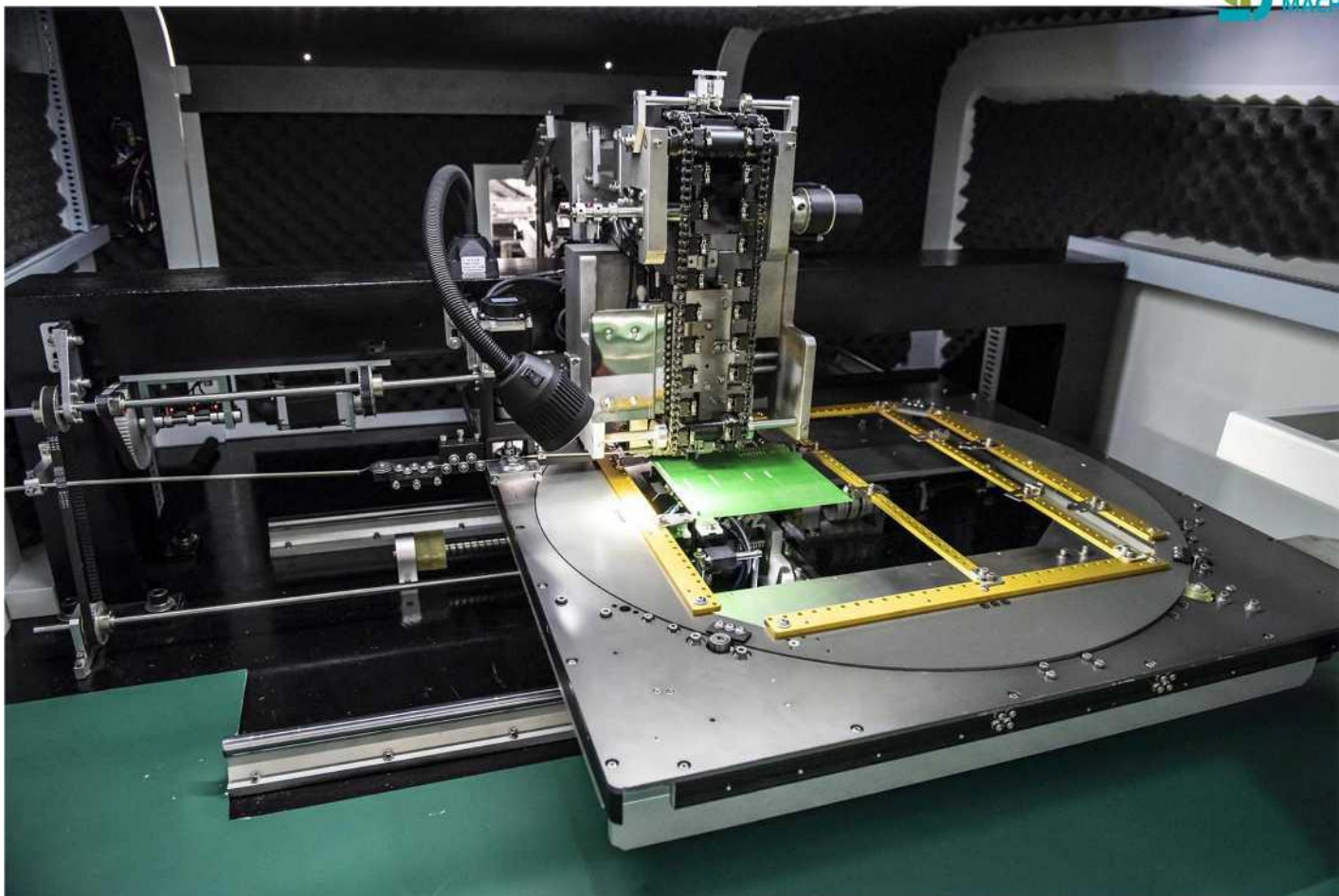


S4000

Axial Inserter

The expert of through-hole automation



For single-process sequencing and insertion of axial components and jumper wires, the S4000 delivers reliable productivity at the high throughput rates.

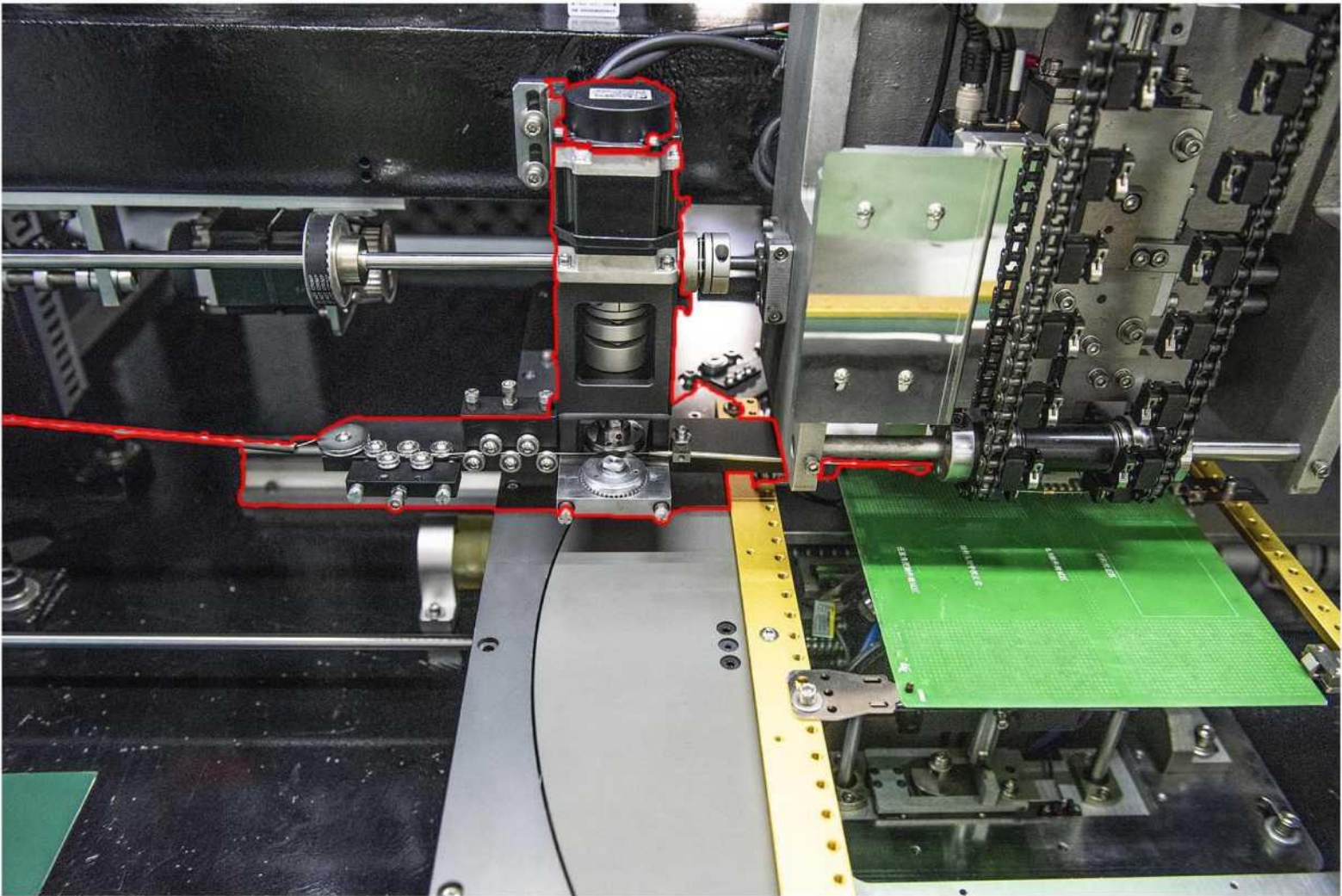
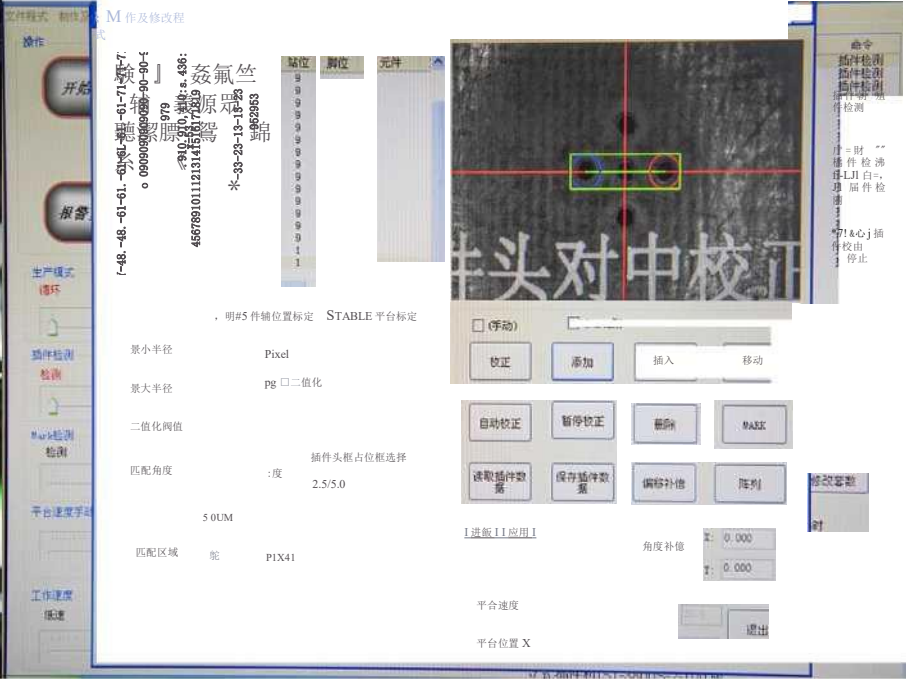
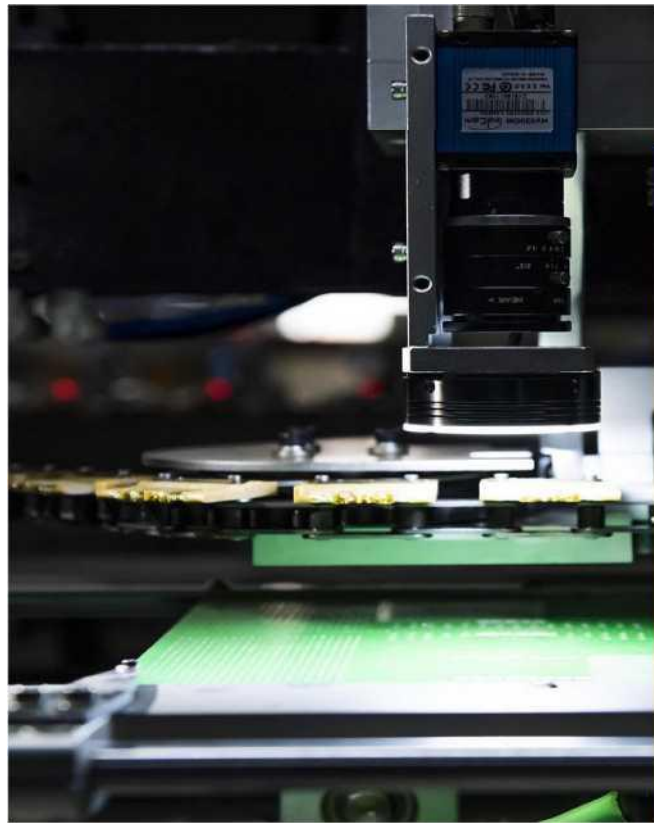
- high real throughput (13000 CPH)
- World-class reliability (1000 ppm)
- Manual Load or Automatic PCB Load/Unload
- Multiple clinch options with programmable height to avoid damaging SK/I components
- Scalable production - 20 to 100 feeder inputs,
- built-in jumper wire feeding ASSY
- Insertion spans from 5mm to 20.0mm,
- Up to 22mm jumper span



- Component insertion miss check
- Simple-to-use operator environment with graphical interface

Full Fuji Servo Drive System bring high throughput (12000 CPH)and reliability (1000ppm)

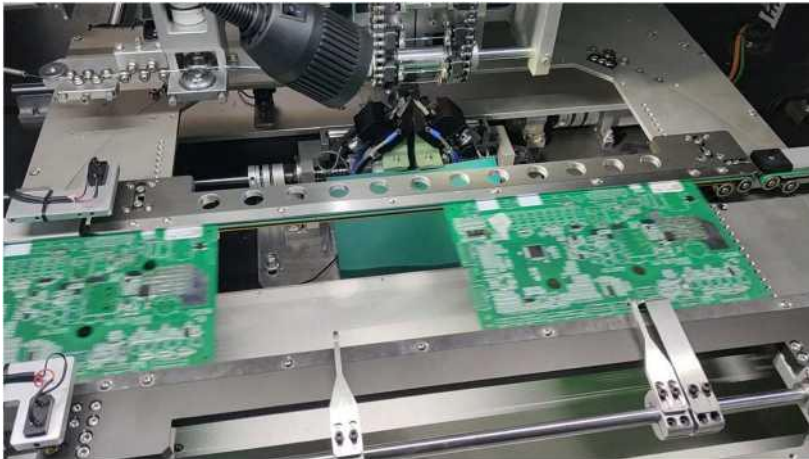
camera visual operating system makes programming faster,the operator can finish a new PCB insertion program within 5 minutes



Built-in jumper wire feeding ASSY save more jump cost and feeder position

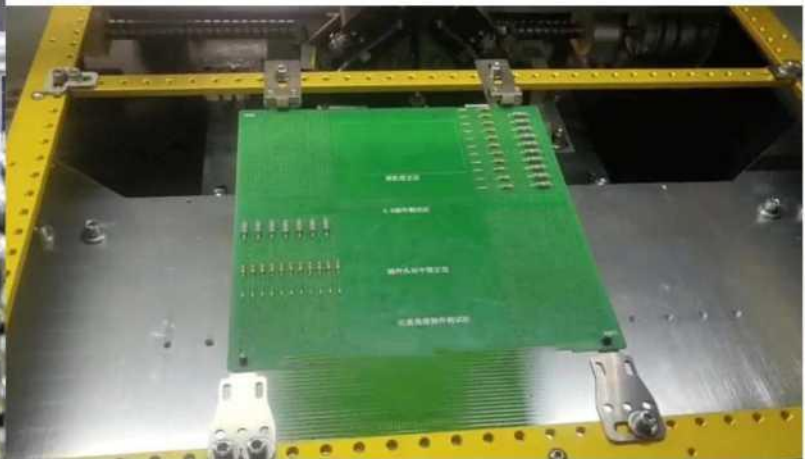
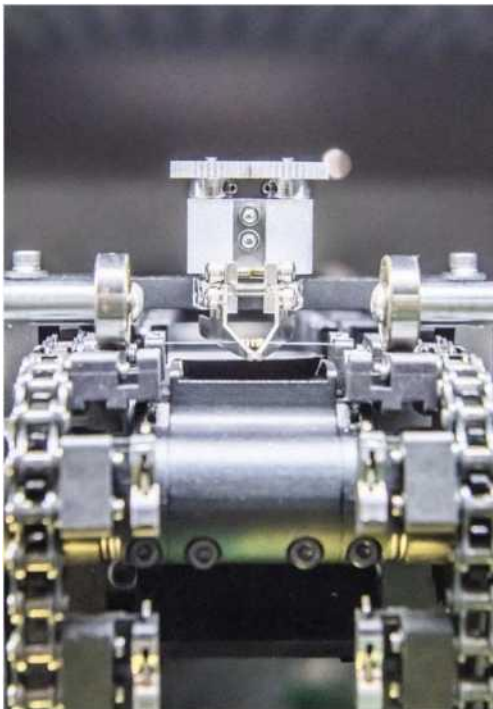


Compatible with UIC Feeder, stable and durable



Provide online mode

Centring gripper , keep component always alignment



Application:



LED Signage / LED Illumination



LED Drivers / Fluorescent Ballasts



Set-top Box / Game / Motherboard



Appliance (White Goods)

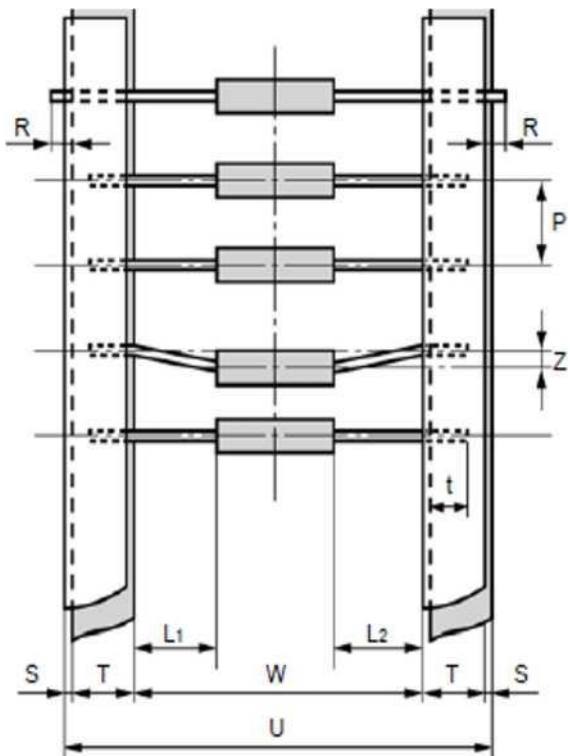
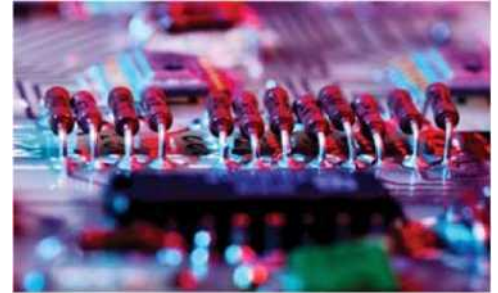


Power Conversion



High-Mix Environments

Insert a full array of axial lead components and jumper wire diameters



精度	I	II	III	备注
w	(52),	(52f)	26 广 (52 广	
p	510.3		■ D. 5*	
L1-L2	0.2 以下	0.5 以下	1 以下	
T	6 土仲			
Z	1.0 以下		1.2 以下	
R	0			
t	3.2 以上嵌			
S	0.8 以下海			
U	65.5 以下			
备注				

Machine specification

Item	Technical Specifications
Insertion Rate	24000 pcs/hr
Non Performing Rate	Less than 300PPM
Insert Theta	Parallel 0°,90°\180°\ 270°
Component Span	Dual span 5.0mm-20mm
PCB size	Min:50mm*50mm; Max: 450mm*450mm
PCB thickness	0.79-2.36mm
Component types	Axial tape packed material such as capacitor, transistor, diode, resistor, blown fuse.
Clinch length	1.2-2.2mm(adjustable)
Clinch degree	0-35°(adjustable)
Station quantity	60 stations(recommended),optional (10-100 stations)
Machine size (lengthxwidthxheight)	Main unit 1700mmx1300mmx1600mm
Station size(lengthxwidthxheight)	510mmx1000mmx1410mm(10 stations)
Main unit weight	1500KG
Auxiliary unit weight	750KG (40 stations)
Power supply System protection	220V,AC(single phase), 50/60Hz 2.0KVA; Uninterruptible power supply (UPS) configuration, run 15 minutes after power outage
Working power	1.6KW (Energy Saving)
Air pressure	0.6-0.8MPA
Air consumption	0.3m ³ /minute