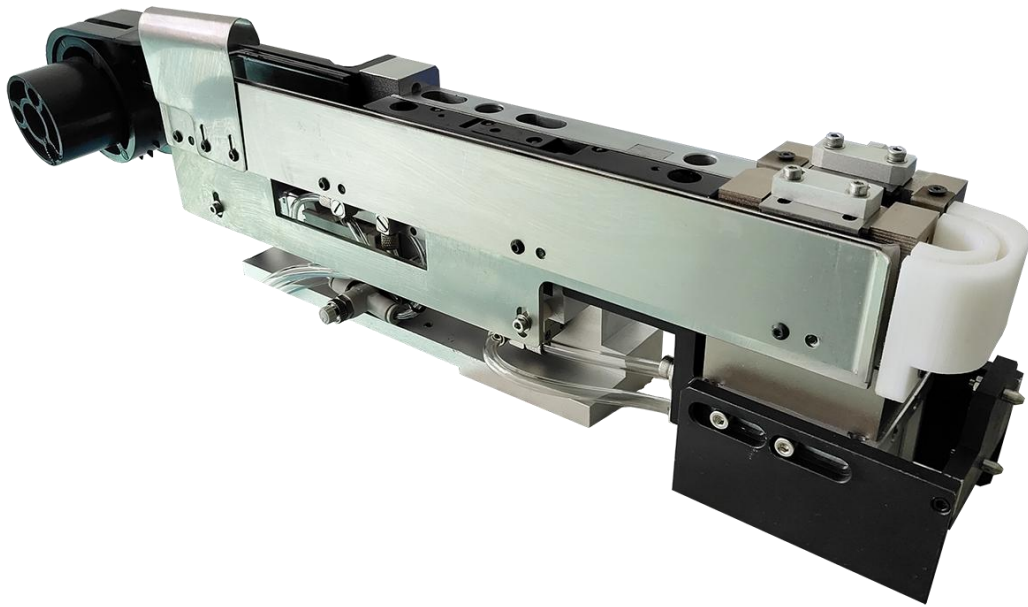
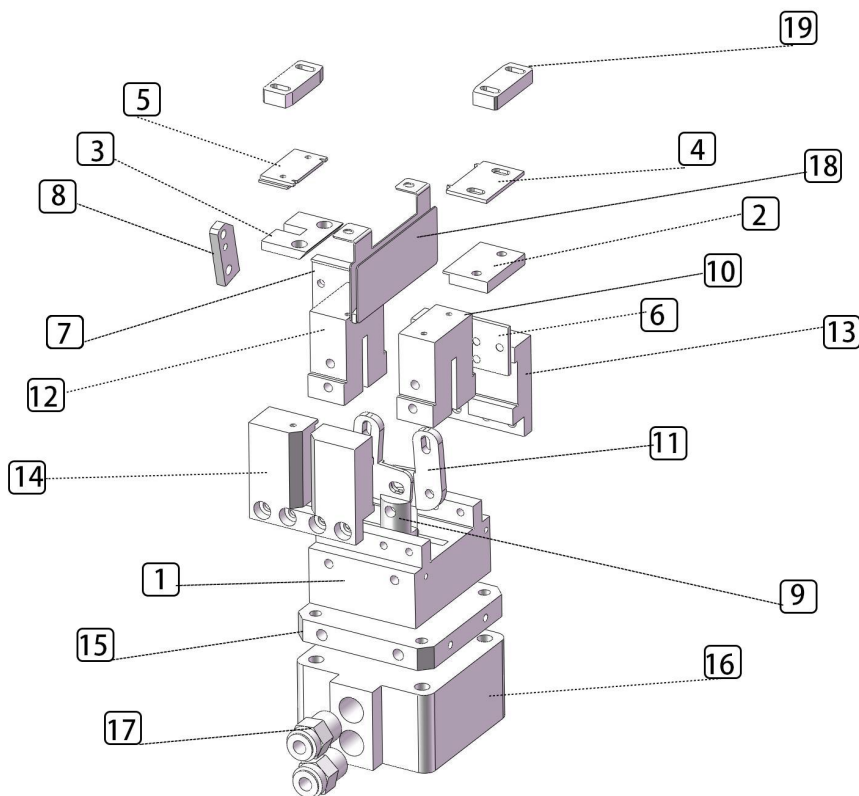
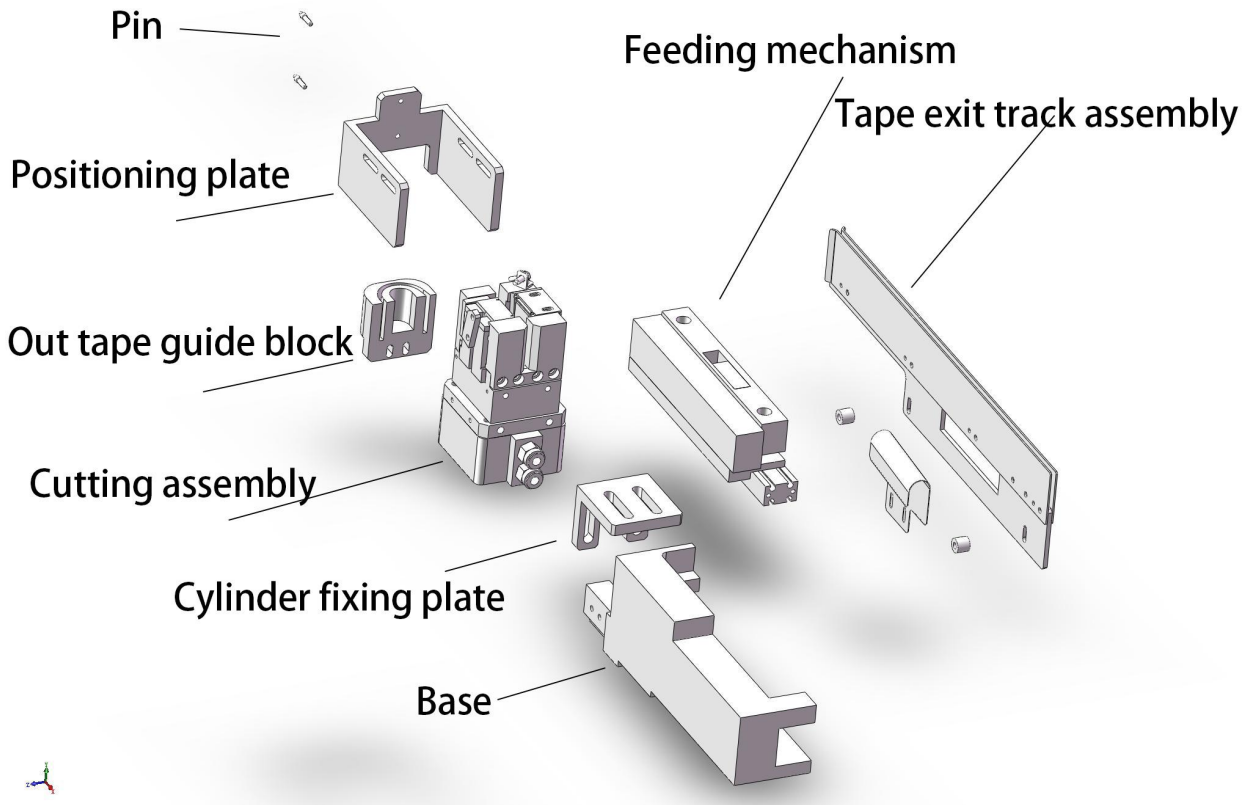


Introduction & part list of JM tape feeder



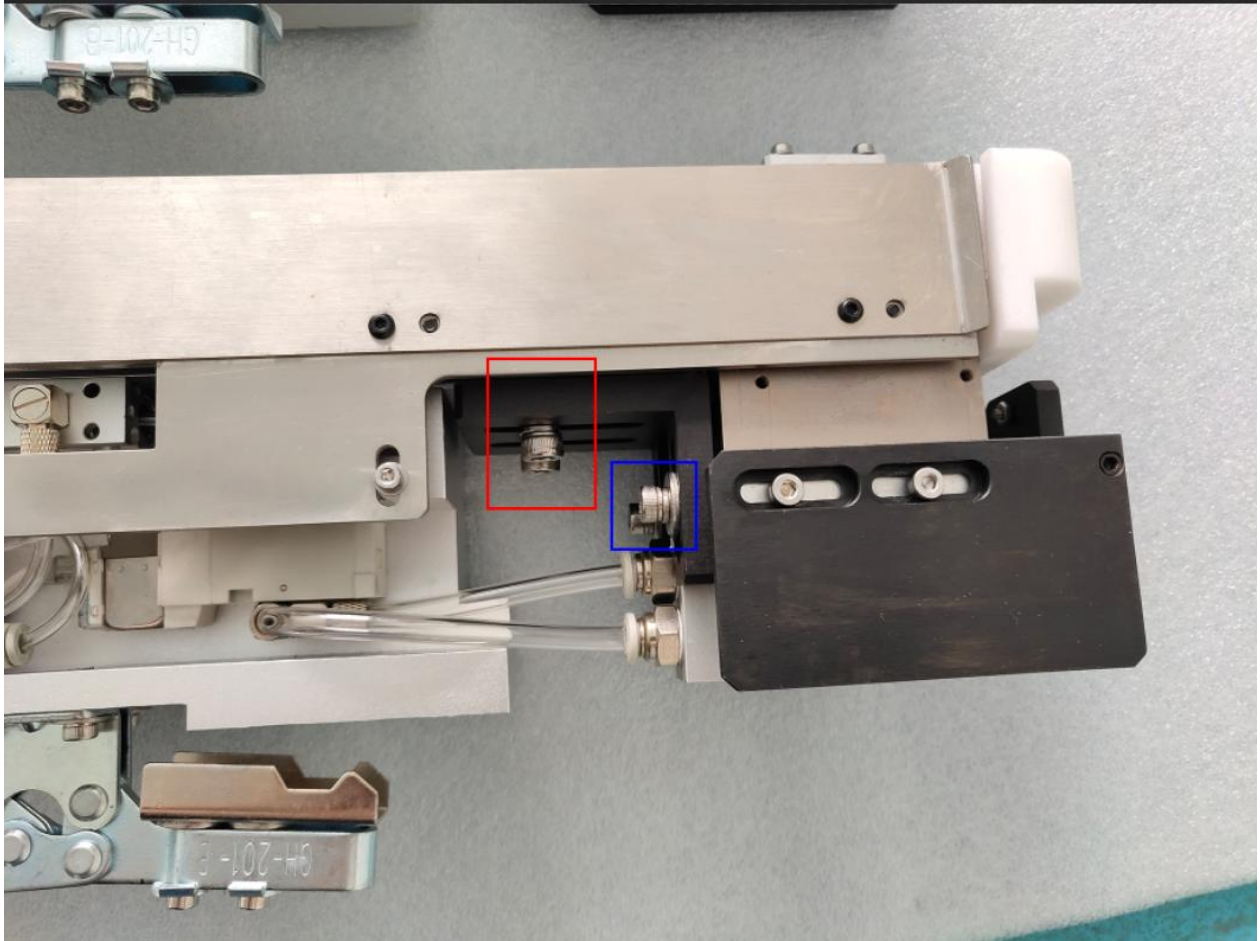
1, Part list



NO	Name	part#
1	cutting base	F3001-CA-001
2	cutter R	F3001-CA-002
3	cutter L	F3001-CA-003
4	lead holder R	F3001-CA-004
5	lead holder L	F3001-CA-005
6	R cutter holder	F3001-CA-006
7	L cutter holder	F3001-CA-007
8	Spring holder	F3001-CA-008
9	connecting rod	F3001-CA-009
10	R cutter base	F3001-CA-010
11	cutter driver	F3001-CA-011
12	L cutter base	F3001-CA-012
13	big holder A	F3001-CA-013
14	big holder B	F3001-CA-014
15	cylinder plate	F3001-CA-015
16	CDQ2B50-10DCZ	F3001-CA-016
17	KQ2H06-02S	F3001-CA-017
18	tape guide	F3001-CA-018
19	Body holder	F3001-CA-019
20	cylinder fixing plate	F3001-CA-020
21	out tape guide block	F3001-CA-021
22	base	F3001-CA-022
23	positioning plate	F3001-CA-023
24	pin	F3001-CA-024

2 Adjustment

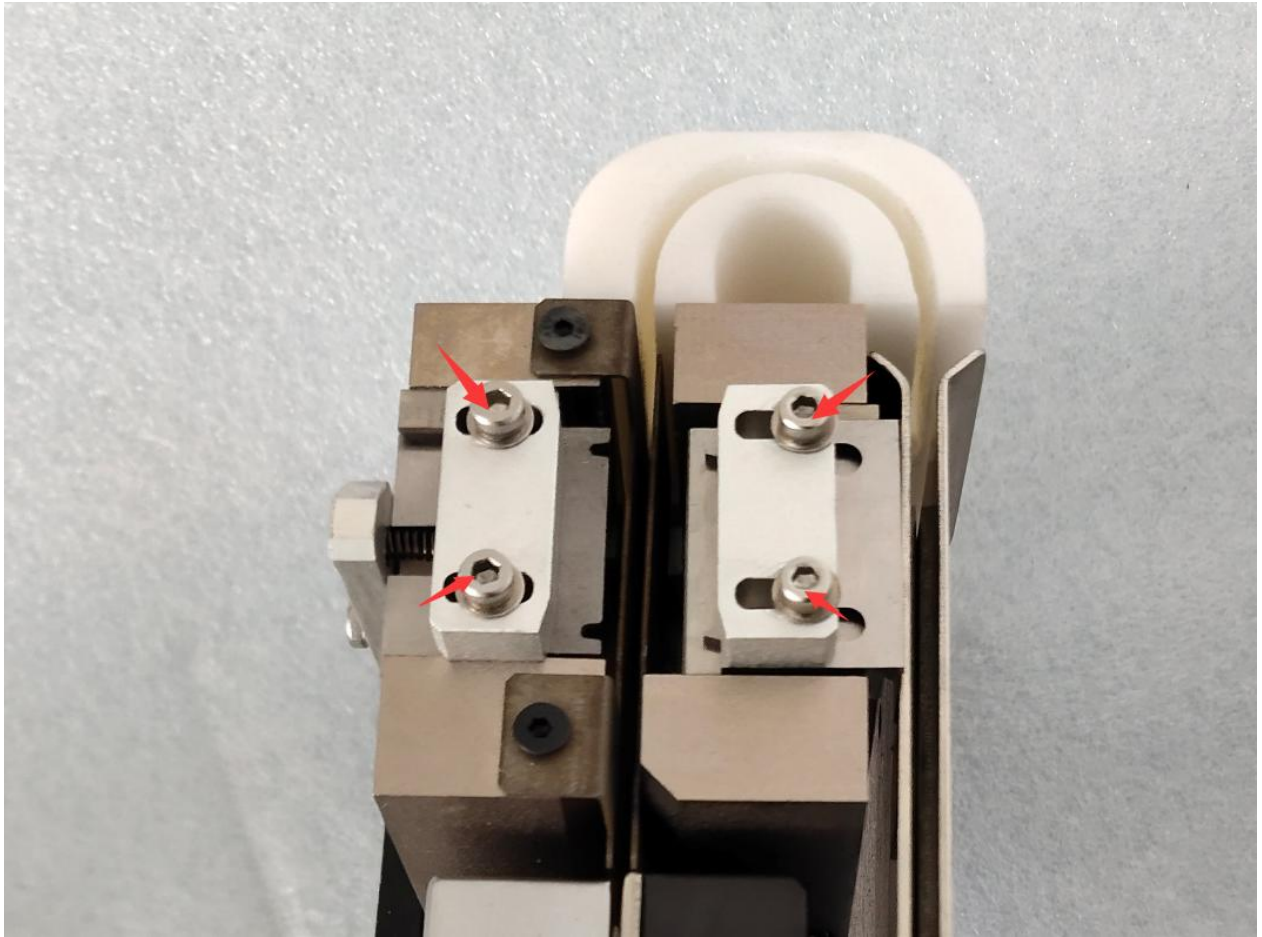
Tape position



Loose screws of red mark ,can adjust the Y position of tape, to make the lead matching ‘lead holder L’ .

Loose screws of blue mark, can adjust the Z position of tape, to make the length of the lead cutting Longer or shorter.

Component position



Loose the screws of red mark , can adjust the timing of clamp , and centering between body and lead.