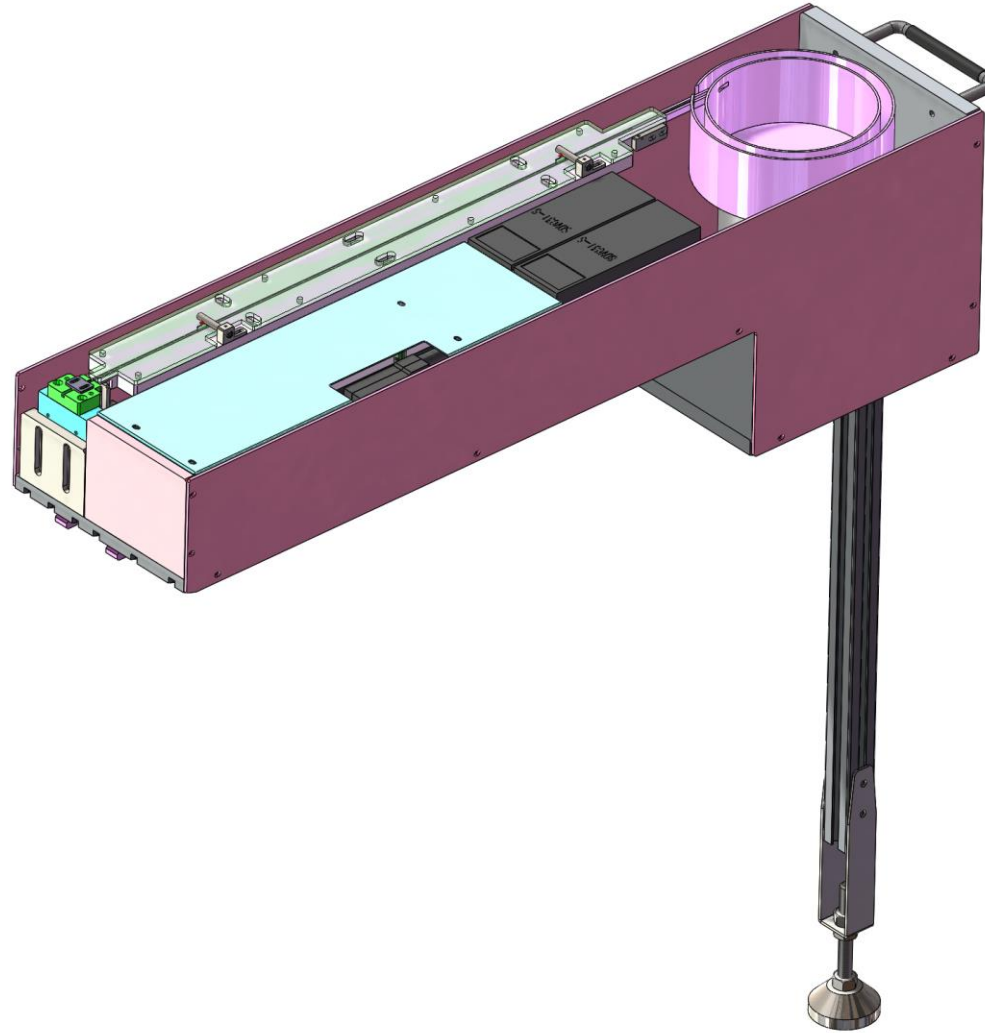


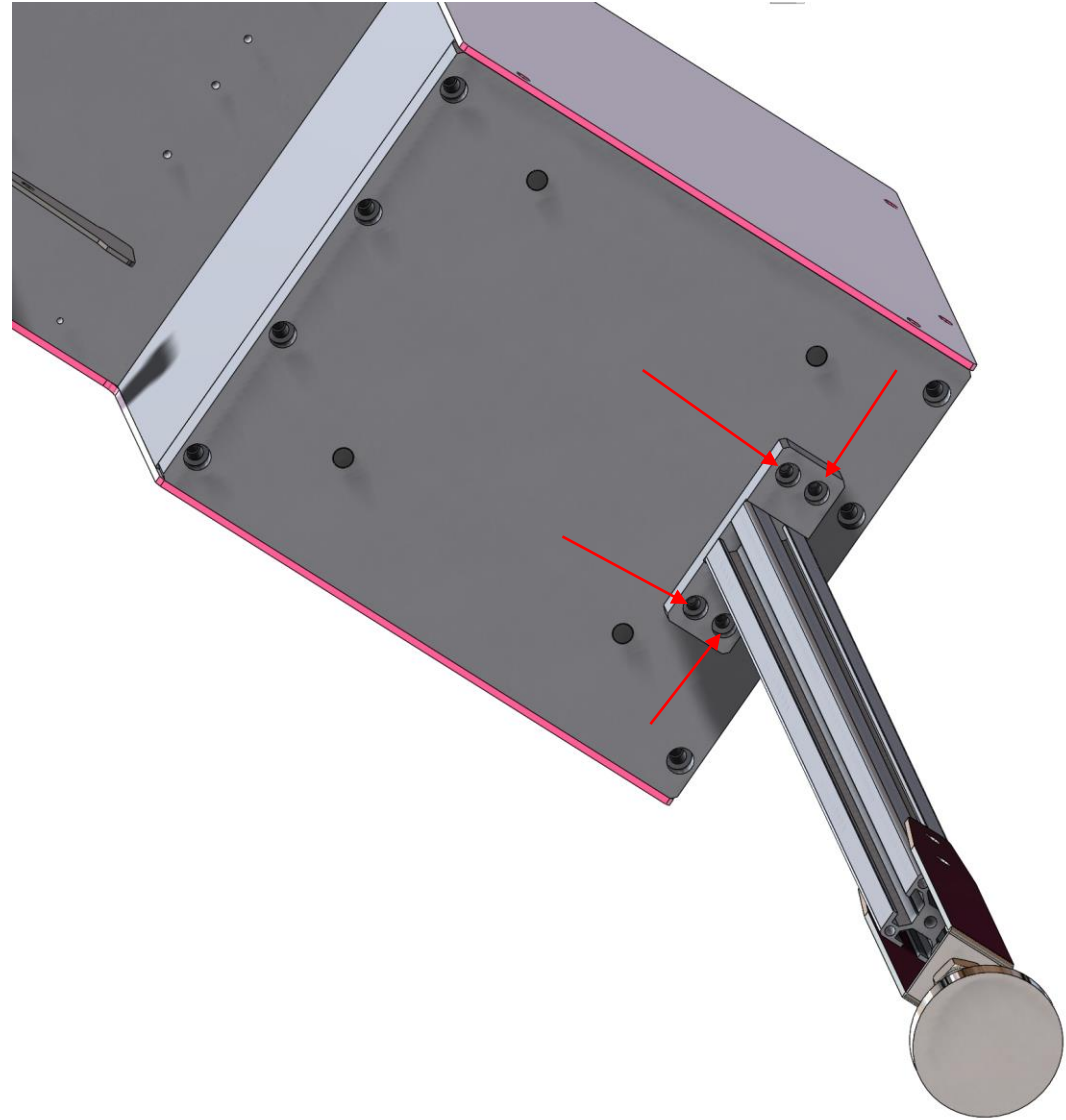
Bowl feeder installation

albert@smthelp.com MP:+8618575533334



Step 1: support foot install

As shown in the picture on the right , tight
The 4 screws



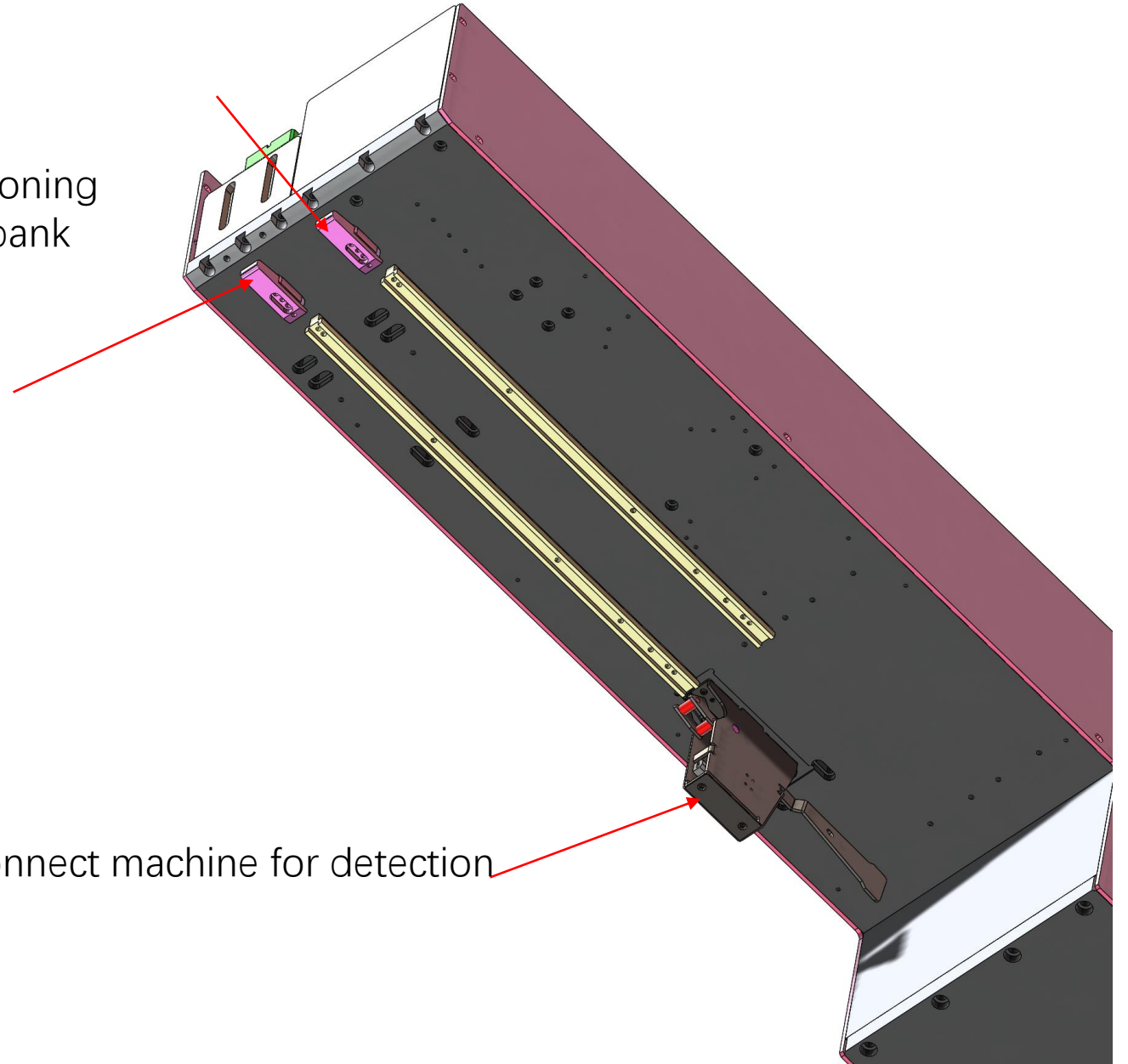
Step 2: Height adjust

As shown in the picture on the right, loose the upper Nut first, then rotate lower nut to adjust the height to Match the machine



Step 3: install feeder on machine

As shown in the picture on the right, the positioning Lane must match the metal trough on feeder bank

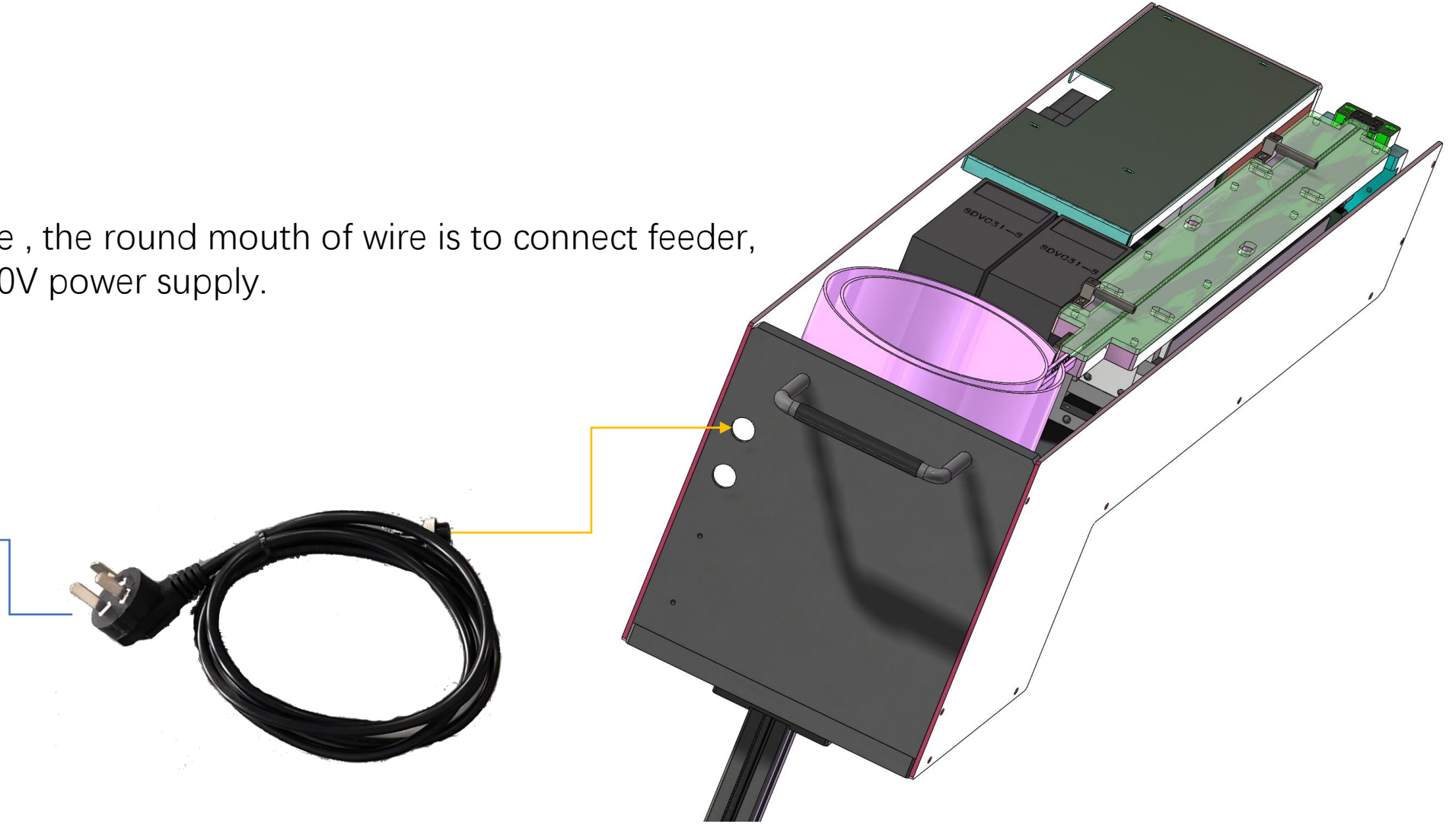


The connector must connect machine for detection

Step 4: connect the power wire

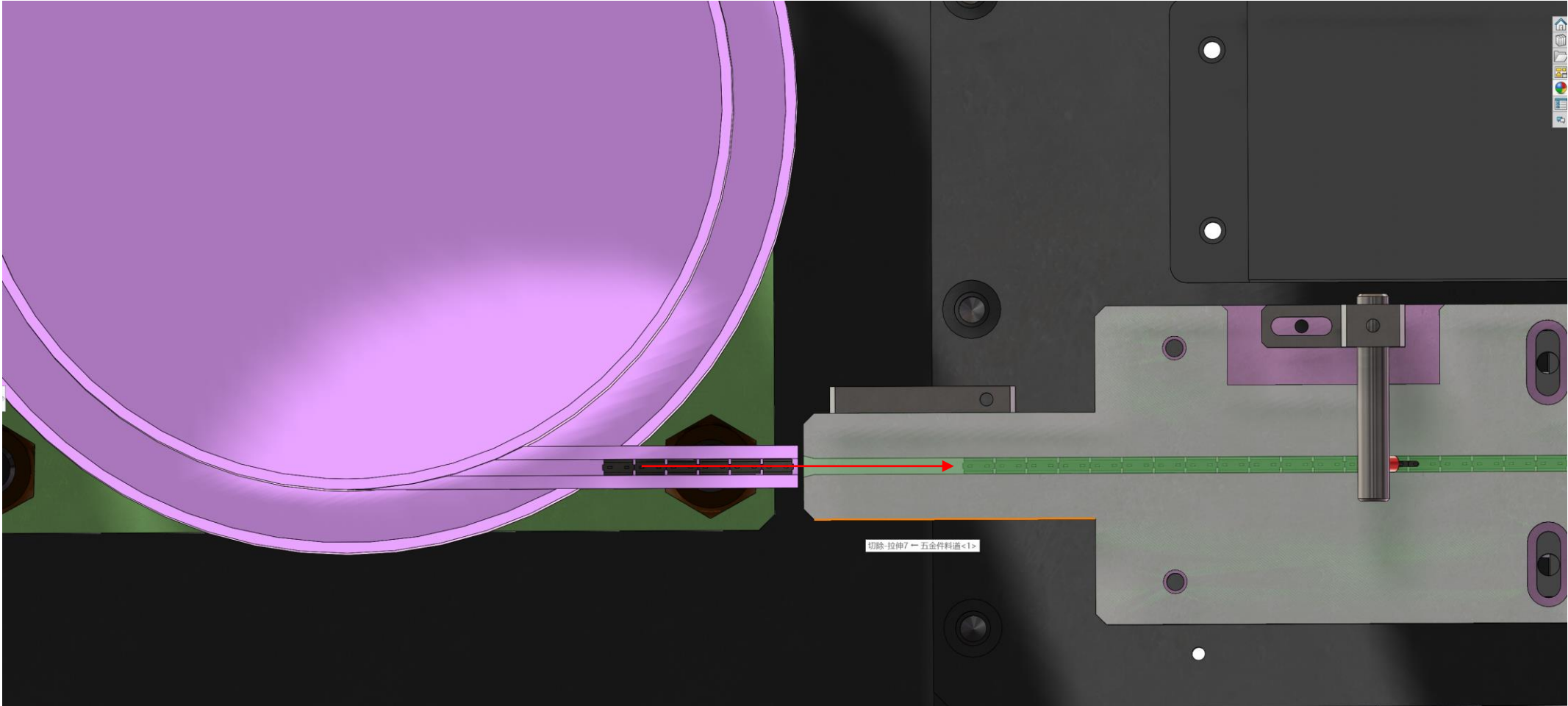
As shown in the picture , the round mouth of wire is to connect feeder,
The other side is to 110V power supply.

110V



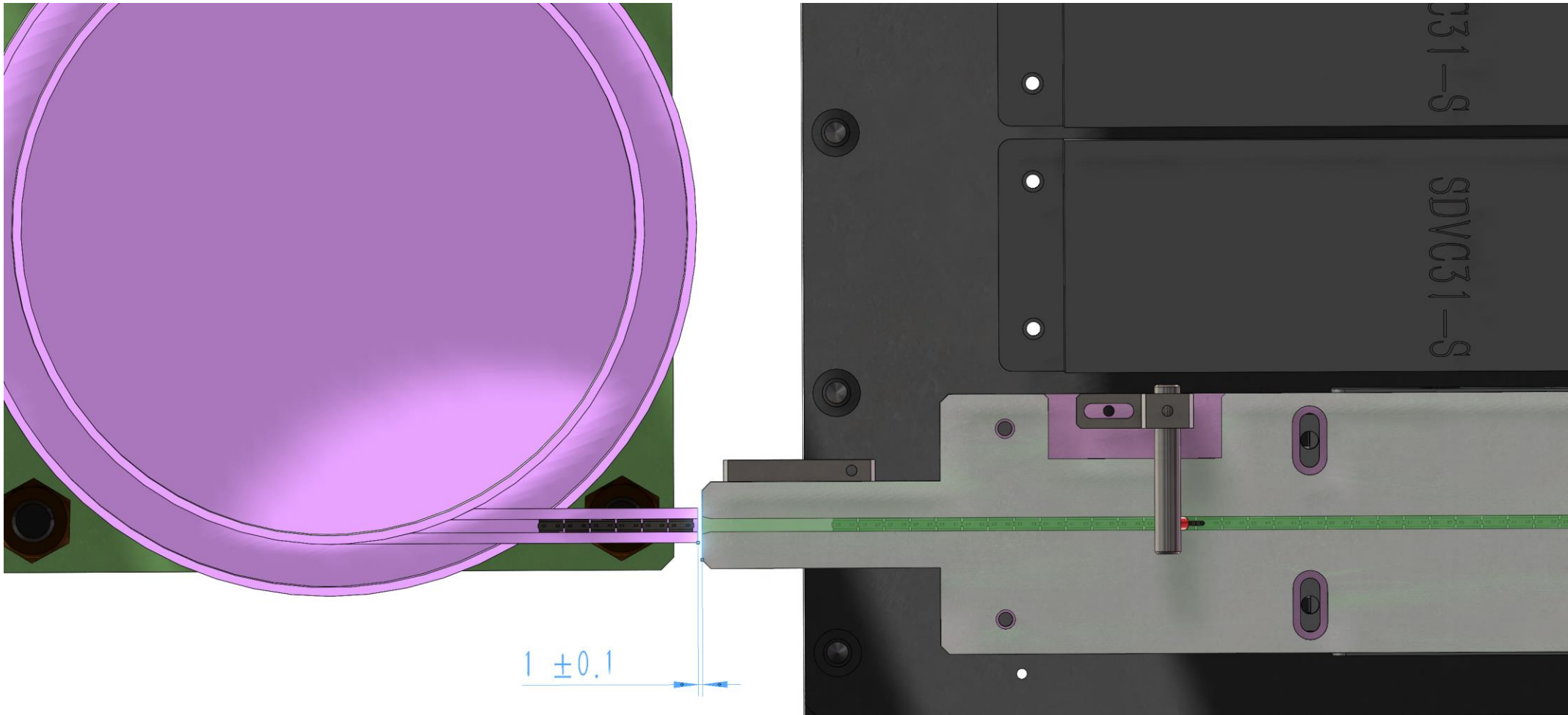
Step 5. 1 :alignment check between bowl and Linear track

As shown in the red mark below: the output orbital of bowl should be alignment with Linear track



Step 5. 2 :distance check between bowl and Linear track

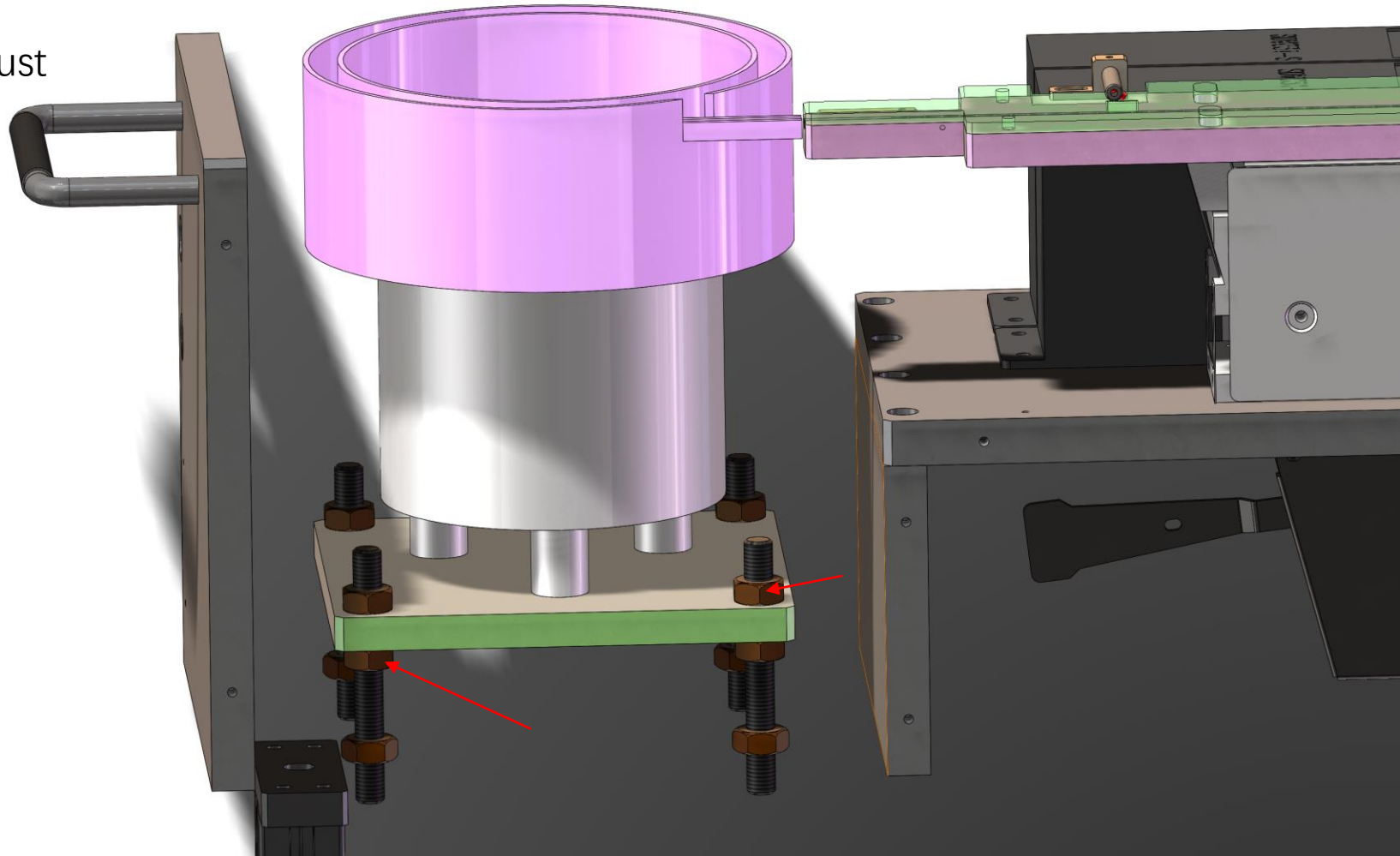
As shown in the picture below: the distance between bowl and linear track should be 1mm



Step 5. 3: bowl position adjust (This adjustment is optional , please do it after step 5.1 & 5.2 check)

As shown in picture on the right,
Loose the upper 4 nuts , we can move the bowl
For position adjust (on all sides).

Then adjust the lower 4 nuts , we can adjust
The height of bowl.



Step 6 : the vibration AMP

After we finish step 1 to 5 , we believe feeder is running good on machine , below is the function of vibration AMP.

We always adjust only 2 setting For make component moveing Fast and stable enough. They are Voltage&frequency (V&Hz)

We don't suggest a huge value change if Factory Settings working ok.

current voltage
this window is for show the current value of AMP
V or Hz

Adjust buttom +&- for voltage

funtion choose buttom & Indicator light

long press funtion buttom for 2 sec , then click buttom angin can choose Advanced parameters .

usually we just use Hz setitng , when Indicator light stop in 频率Hz Hz, we can click or to adjust frequency.

ON/OFF

Thanks