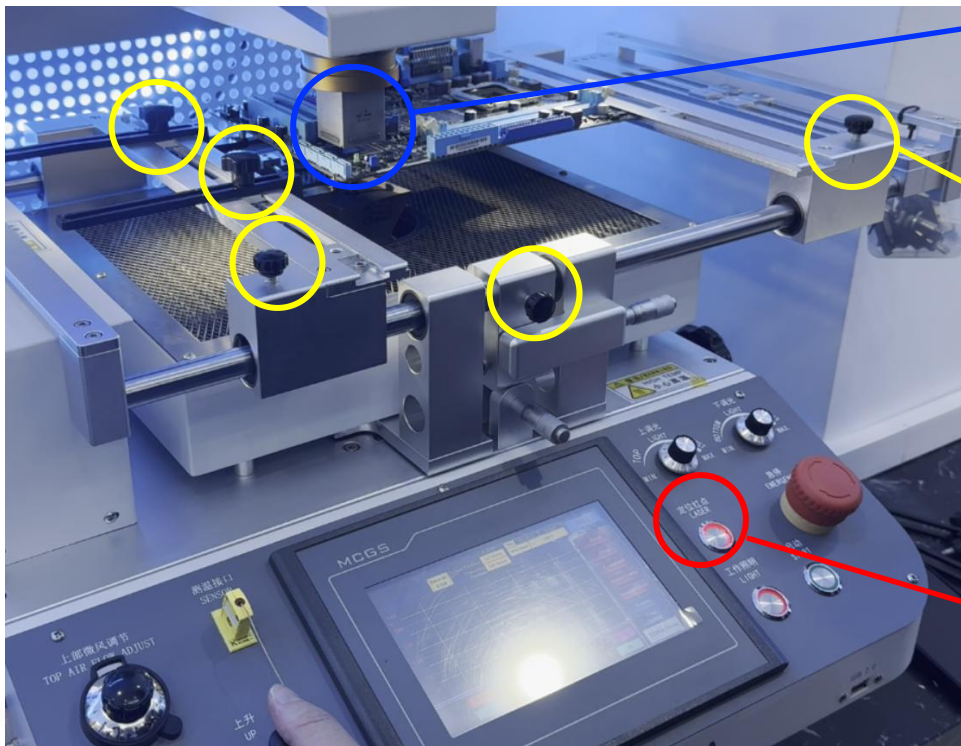


Catalog

1.Fixed fixtures -----	1
2.Enter the operation interface-----	2
3.Introduction to the operating interface-----	3
4.Determine temperature curve -----	4
5.Manual mode -----	5
6.Solder mode -----	6
7.Remove mode -----	7
8.Mount mode -----	8

1.Fixed fixtures



2. Move the chip to the center of the laser red dot for fixation

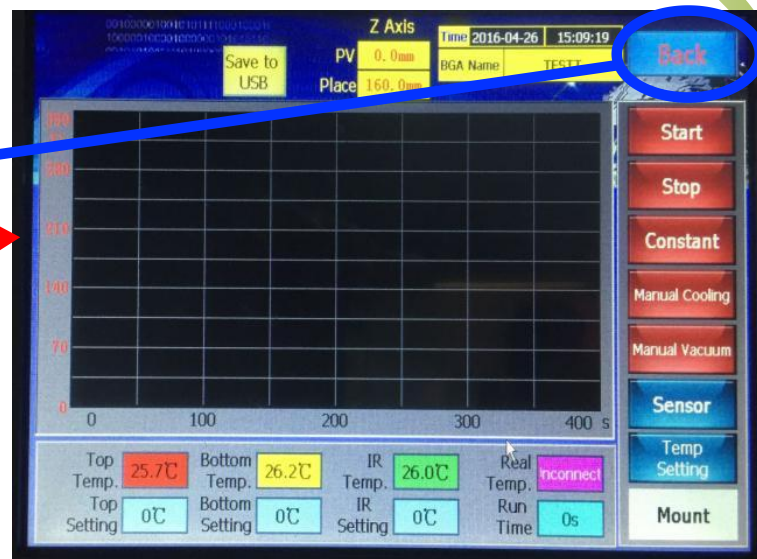
3. Release the knobs, move the bracket, fix the PCB, and tighten the knob

1. Turn on the laser switch

2. Enter the operation interface



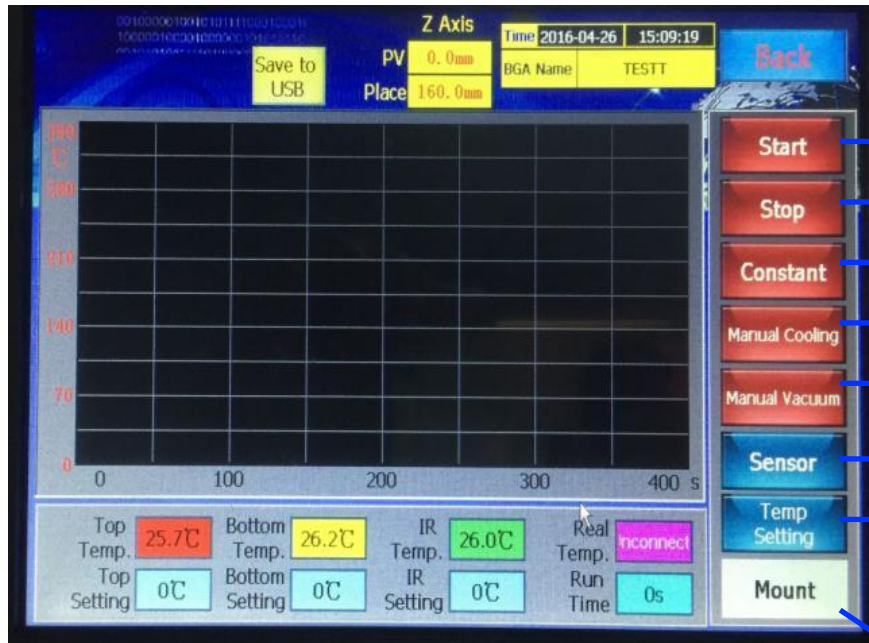
Main interface



Operation interface

1. Click on **SETUP** to enter the operation interface, the password is 8888
2. Click back to enter the main interface
3. Clicking on 中文 is Chinese, clicking on English is English

3. Introduction to the operating interface



Start running

Reset and stop running

Maintain a constant temperature

Manual cooling chip

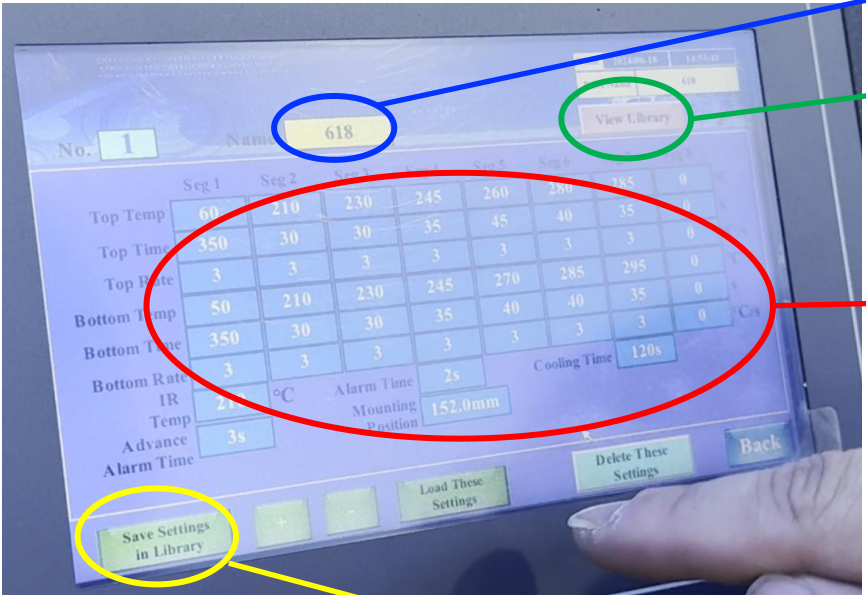
Manually activate the vacuum

View temperature curve

Programming, setting temperature curve

Click to switch operating modes: Manual, Solder, Remove, Mount

4. Determine temperature curve



2. Enter program name

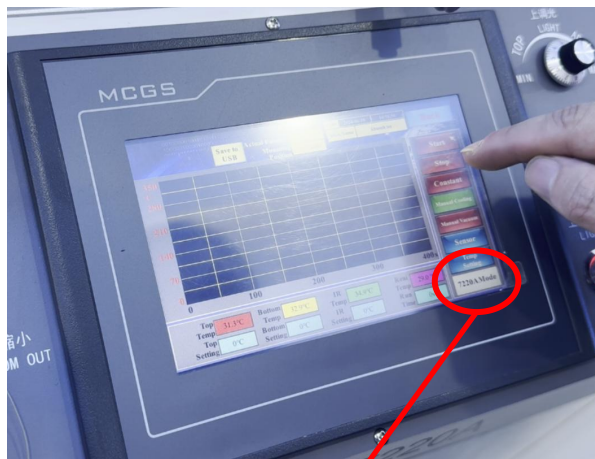
4. Or choose an existing program



1. Enter the temperature parameters corresponding to the process

3. Save the program

5. Manual mode

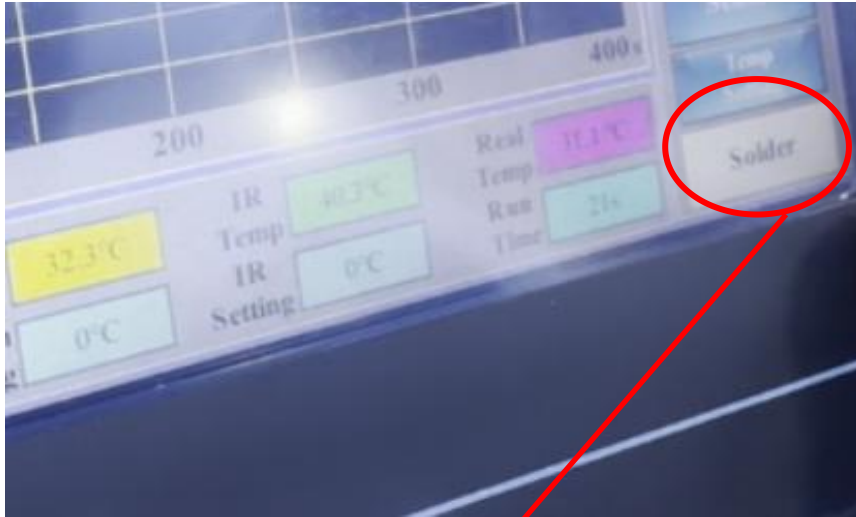


1. 7220A Mode is displayed as manual mode

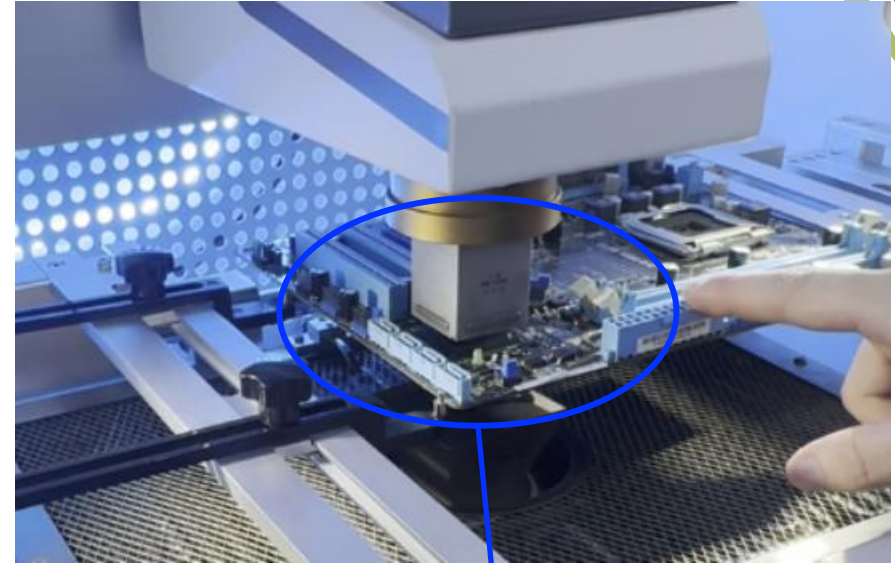


2. Operate this area to move the heating tube up and down

6.Solder mode

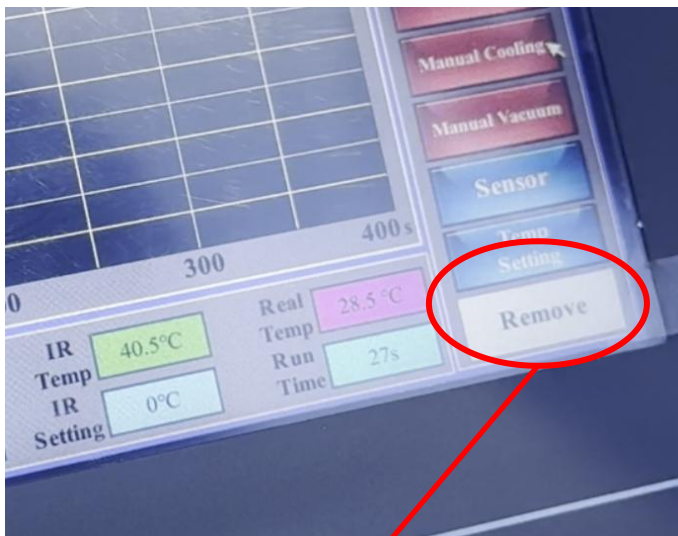


1. Solder Mode is displayed as manual mode

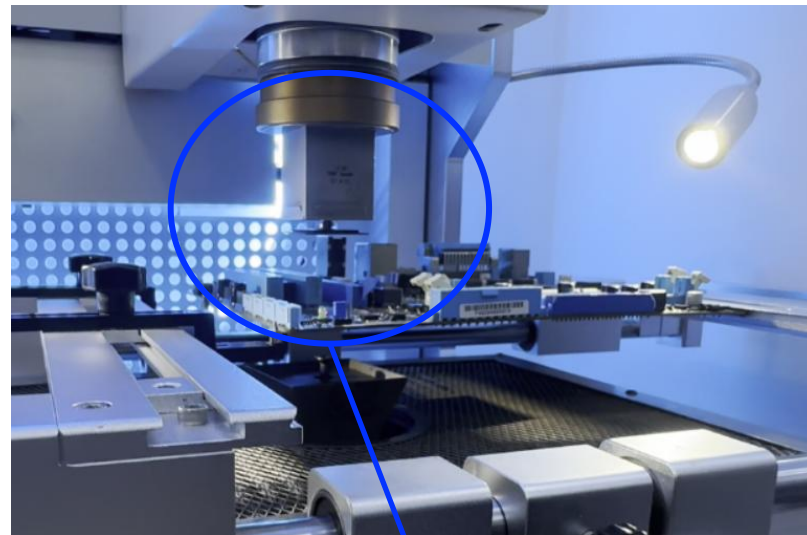


2. Select the program (temperature curve), click start, and start soldering the chip

7.Remove mode



1. Remove Mode is displayed as manual mode

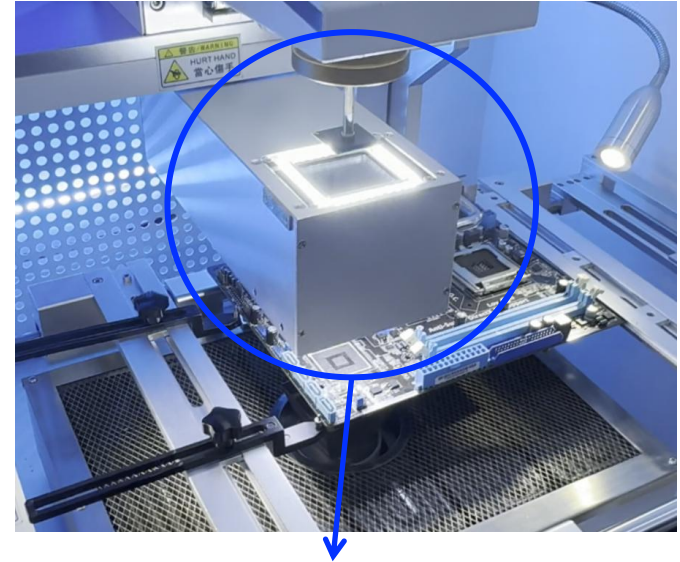


2. Select the program (temperature curve), click start, and start removing the damage chip

8. Mount mode



1. Mount mode is displayed as manual mode



2. Select the program (temperature curve), Click on Start, then open the camera

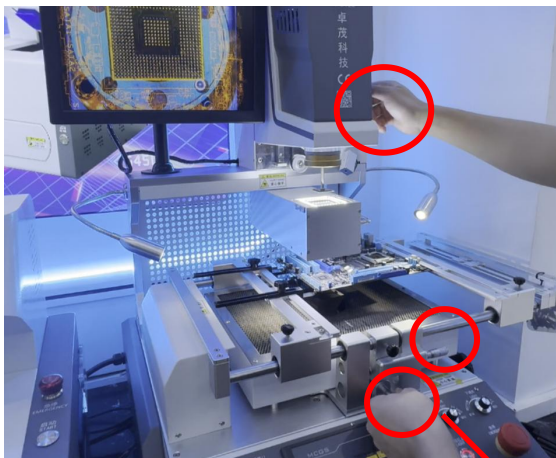


Fig.1

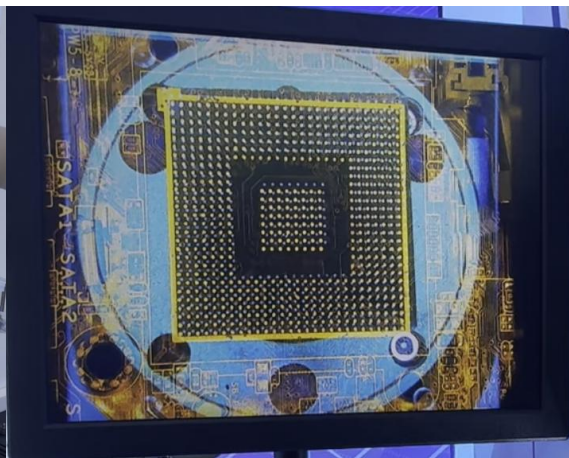
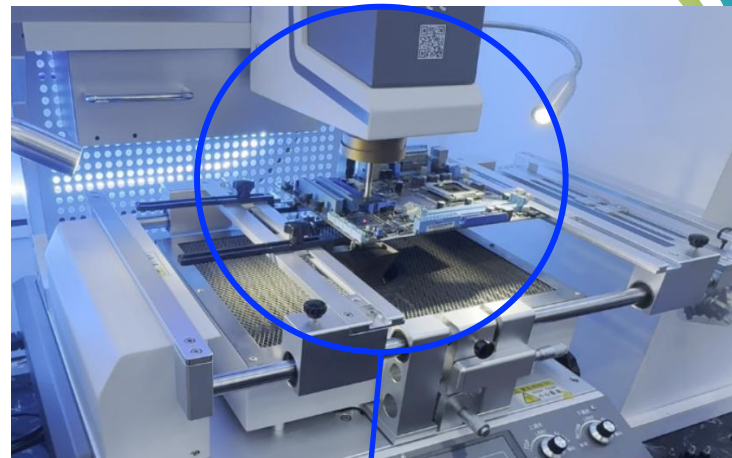


Fig.2

1. Adjust the positions of the three red circles to align the blue and yellow dots in Figure 2.



2. After alignment, turn off the camera and click confirm. Finally, the chip will be mounted

Please visit

www.smthelp.com

Find us more

<https://www.facebook.com/autoinsertion>

Know more our team

<https://cn.linkedin.com/in/smtsupplier>

Welcome to our factory in Shenzhen China

See more machine working video, please Youtube

[Auto Insertion](#)

Google

Auto+insertion, to get more informations

Looking forward to your email

info@smthelp.com